

Converting Colors

YUV(183.3120, -3.1118,
18.1434)

Have a look what the booklet for
YUV(183.3120, -3.1118, 18.1434)
contains.

YUV(183.3120, -3.1118, 18.1434)	3
<i>Conversions</i>	4
<i>Details</i>	6
<i>Harmonies</i>	12
<i>Previews</i>	24
<i>Color Blindness Simulation</i>	28
<i>CSS Examples</i>	31

Color

**YUV(183.3120, -3.1118,
18.1434)**

Conversions

Conversions Part 1

Format	Color
Hex	CCAEB1
RGB	204, 174, 177
RGB Percent	80%, 68%, 69%
CMY	0.2000, 0.3176, 0.3059
CMYK	0.00, 0.15, 0.13, 0.20
HSL	354°, 23%, 74%
HSV	354°, 15%, 80%
XYZ	47.9737, 46.2838, 48.0002
YIQ	183.3120, 16.9170, 7.2930

Conversions

Conversions Part 2

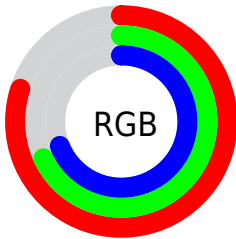
Format	Color
R_{YB}	204, 174, 177
Decimal	13414065
CIE _{Lab}	73.73, 11.34, 2.49
CIE _{LCh}	74, 11.606, 12.393
Yxy	46.2838, 0.3372, 0.3254
Android (android.graphics.Color)	4291604145 (0xFFCCAEB1)
YUV	183.3120, -3.1118, 18.1434
Hunter-Lab	68.0322, 6.8150, 5.7904

Details

The YUV color **183.3120, -3.1118, 18.1434** is a light color, and the websafe version is hex **CC9999**. A complement of this color would be **194.6880, 3.1118, -18.1434**, and the grayscale version is **183.0000, 0.0000, 0.0000**.

A 20% lighter version of the original color is **237.8170, -2.3748, 15.0695**, and **130.6000, -3.2538, 17.0138** is the 20% darker color. If you saturate the color by 10%, you get **169.5200, -5.1864, 30.2390**, and if you desaturate by 10%, it is **197.1040, -1.0373, 6.0478**.

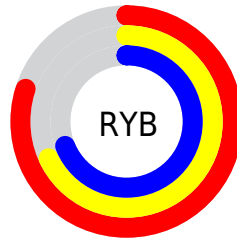
Distribution



Red (80%)

Green (68%)

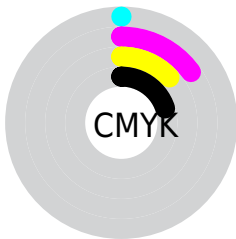
Blue (69%)



Red (80%)

Yellow (68%)

Blue (69%)

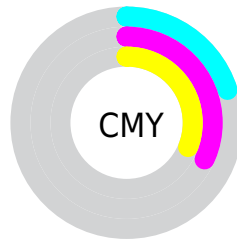


Cyan (0%)

Magenta (15%)

Yellow (13%)

Black (20%)



Cyan (20%)

Magenta (32%)

Yellow (31%)

Brightness & Saturation Gradients

These gradients show how the YUV color 183.3120, -3.1118, 18.1434 changes by changing the brightness by 10 percent. The first figure shows a shift by +10% for each color and the second figure -10%.

Similar to the brightness gradients but the following saturation gradients show a change of the YUV color 183.3120, -3.1118, 18.1434 by changing the saturation by 10% instead.

■ 183.3120, -3.1118,
18.1434

■ 183.3120, -3.1118,
18.1434

255.0000, 0.0000,
0.0000

■ 156.0130, -2.9644,
17.5286

■ 237.8170, -2.3748,
15.0695

■ 130.6000, -3.2538,
17.0138

■ 105.1160, -2.5222,
15.6843

■ 80.8170, -2.3748,
15.0695

■ 57.5180, -2.2274,
14.4547

■ 35.9200, -1.9326,
13.2252

■ 13.1160, -2.5222,

15.6843

■ 0.0000, 0.0000,
0.0000

■ 183.3120, -3.1118,
18.1434

■ 183.3120, -3.1118,
18.1434

■ 169.5200, -5.1864,
30.2390

■ 197.1040, -1.0373,
6.0478

■ 155.0270, -7.4083,
42.9493

■ 211.5970, 1.1847,
-6.6626

■ 141.2350, -9.4829,
55.0449

■ 225.3890, 3.2592,
-18.7582

■ 126.8560,
-11.2680, 67.6553

■ 239.1810, 5.3338,
-30.8537

■ 112.9500,
-13.7793, 79.8509

■ 239.7510, 7.5178,
-31.3536

■ 99.1580, -15.8539,
91.9464

■ 84.6650, -18.0758,
104.6568

■ 70.8730, -20.1504,
116.7524

■ 63.2760, -21.3351,
123.4149

Harmonies

Analogous

The Analogous color harmony consists of three colors that are next to each other on the color wheel.



183.6580, 2.1406, 13.4549



183.3120, -3.1118, 18.1434



182.4600, -7.6218, 18.0136

Triad

The Triadic color harmony groups three colors that are evenly spaced from another and form a triangle on the color wheel.



183.3120, -3.1118, 18.1434



179.1320, -6.9671, -5.3778



179.6590, 10.5211, -14.6099

Complementary

The Complementary color scheme is a pair of colors which are on the opposite of each other on the color wheel.



183.3120, -3.1118, 18.1434



194.6880, 3.1118, -18.1434

Split Complementary

Split-complementary colors differ from the complementary color scheme. The scheme consists of three colors, the original color and two neighbors of the complement color.



177.7570, 8.5008, -19.9579



183.3120, -3.1118, 18.1434



178.0430, -1.9932, -14.0697

Square

The Square scheme is like the rectangle color scheme, but the four colors are evenly spaced on the color wheel.



183.3120, -3.1118, 18.1434



180.3890, -10.0518, 4.0438



177.7910, 3.5540, -19.9877



181.6000, 10.0572, -5.7882

Rectangle

The Rectangle color scheme consists of four colors that form a rectangle on the color wheel.



183.3120, -3.1118, 18.1434



181.9820, -9.3581, 14.9248



177.7910, 3.5540, -19.9877



179.2350, 10.2371, -16.8691

Sweetspot

The Sweet Spot groups the original color and five complimentary colors.



183.3120, -3.1118, 18.1434



248.1040, -1.0373, 6.0478



185.4930, 9.1240, 13.5996



123.2070, -0.5951, 4.2035



0.0000, 0.0000, 0.0000



128.0000, 0.0000, 0.0000

Same Dimension

The Same Dimension uses a secret algorithm to generate beautiful new colors.



183.3120, -3.1118, 18.1434



223.3240, -4.5967, 27.7799



190.0140, -7.8949, 12.2657



95.1040, -1.0373, 6.0478



51.5720, -17.0440, 100.3534



11.8180, -3.8543, 22.9616

Inverse Universe

The Inverse Universe completely reimagines the original color for something new.



183.3120, -3.1118, 18.1434



223.3240, -4.5967, 27.7799



187.9860, 7.8949, -12.2657



95.1040, -1.0373, 6.0478



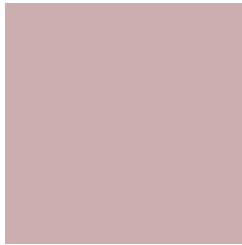
51.5720, -17.0440, 100.3534



11.8180, -3.8543, 22.9616

Previews

White Background



This preview shows how the YUV color 183.3120, -3.1118, 18.1434 looks on a white background.

Color Contrast Check

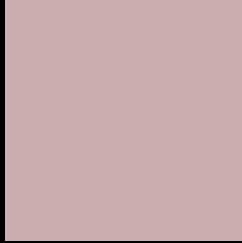
Large Text (above 18pt) WCAG AA × Fail

Any Text WCAG AA × Fail

Large Text (above 18pt) WCAG AAA × Fail

Any Text WCAG AAA × Fail

Black Background



This preview shows how the YUV color 183.3120, -3.1118, 18.1434 looks on a black background.

Color Contrast Check

Large Text (above 18pt) WCAG AA ✓ Pass

Any Text WCAG AA ✓ Pass

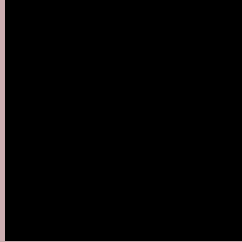
Large Text (above 18pt) WCAG AAA ✓ Pass

Any Text WCAG AAA ✓ Pass

If you want to check with other color combinations, try the [Color Contrast Checker](#).

YUV 183.3120, -3.1118, 18.1434

Background



This preview shows how black text looks on a background with the YUV color 183.3120, -3.1118, 18.1434.



This preview shows how white text looks on a background with the YUV color 183.3120, -3.1118,

Color Blindness Simulation

Color vision deficiency is a very complex topic, and I could not describe the different causes any better than Wikipedia does, so if you want to learn more, you should check out their [article about color blindness](#).

Dichromacy



Original Color

183.3120, -3.1118, 18.1434

Protanopia

181.6090, -0.3002, 2.9739

Deuteranopia

182.7030, -2.8116, 15.1695



Tritanopia

184.0500, 0.9614, 18.3732

Trichromacy



Original Color

183.3120, -3.1118, 18.1434

Protanomaly

182.4140, -1.1901, 8.4069

Deuteranomaly

183.0020, -2.9590, 15.7842

Tritanomaly

183.7080, -0.3490, 18.6731

Monochromacy



Original Color

183.3120, -3.1118, 18.1434

Achromatopsia

183.0000, 0.0000, 0.0000

Achromatomaly

183.4030, -1.1847, 6.6626

CSS Examples

Text

The CSS property to change the color of the text to YUV 183.3120, -3.1118, 18.1434 is called "color". The color property can be set on classes, ids or directly on the HTML element.

This example shows how text in the color `rgb(204, 174, 177)` looks like.

```
.text, #text, p{  
    color:rgb(204, 174, 177)  
}
```

If you want to add a text shadow in that color use the text-shadow property, you can generate a text shadow directly with our [CSS Text Shadow Generator](#).

Here you see how black text with a 4 pixel rgb(204, 174, 177) colored shadow looks like.

```
.shadow{ text-shadow: 4px 4px 2px rgb(204, 174, 177) }
```

Border

The CSS property to change the border of an element to YUV 183.3120, -3.1118, 18.1434 is called "border". The border property can be set on classes, ids or directly on the HTML element.

This example shows the color as border, it can be applied via the CSS property "border" or "border-color".

```
.border, #border, table{ border:4px solid rgb(204, 174, 177) }
```


If only the border color should be changed use the property `border-color`.

```
.border{ border-color:rgb(204, 174, 177) }
```

If you want to add a box shadow in that color use:

Here you see how a box with a 4 pixel `rgb(204, 174, 177)` colored shadow looks like.

```
.boxshadow{ -moz-box-shadow:4px 4px 4px  
4px rgb(204, 174, 177); -webkit-box-  
shadow:4px 4px 4px 4px rgb(204, 174, 177);  
box-shadow:4px 4px 4px 4px rgb(204, 174,  
177) }
```

Background

The CSS property to change the background color of an element to YUV 183.3120, -3.1118, 18.1434 is called "background". The background property can be set on classes, ids or directly on the HTML element.

```
.background, #background, body{  
background: rgb(204, 174, 177) }
```

If only the background color should be changed can be used:

```
.background{ background-color: rgb(204,  
174, 177) }
```

This example shows the color as background, it is applied via the CSS property "background".

To optimize and compress your CSS code, you can use our [online CSS compressor and optimizer](#) based on csstidy. If you want to create a linear or radial gradient as background or border, check our [CSS Gradient Generator](#).

Hey! You found this booklet interesting? Support Converting Colors with the new Membership Option!

The pro membership hides all ads, plus gives you double the colors in the color bucket, and more awesome pro features!

[Learn more, Memberships starting at \\$2.50/m!](#)

**Follow me
on Twitter!**

@ConvertingColor