

Converting Colors

YUV(183.4550, -6.6333,
27.6650)

Have a look what the booklet for
YUV(183.4550, -6.6333, 27.6650)
contains.

YUV(183.4550, -6.6333, 27.6650)	3
<i>Conversions</i>	4
<i>Details</i>	6
<i>Harmonies</i>	12
<i>Previews</i>	24
<i>Color Blindness Simulation</i>	28
<i>CSS Examples</i>	31

Color

**YUV(183.4550, -6.6333,
27.6650)**

Conversions

Conversions Part 1

Format	Color
Hex	D7AAAA
RGB	215, 170, 170
RGB Percent	84%, 67%, 67%
CMY	0.1569, 0.3333, 0.3333
CMYK	0.00, 0.21, 0.21, 0.16
HSL	0°, 36%, 75%
HSV	0°, 21%, 84%
XYZ	49.6548, 46.0988, 44.3111
YIQ	183.4550, 26.8200, 9.5400

Conversions

Conversions Part 2

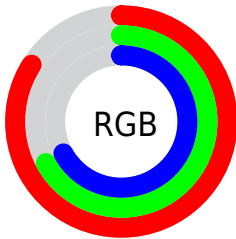
Format	Color
R _Y B	215, 170, 170
Decimal	14133930
CIE Lab	73.61, 16.45, 6.29
CIE LCh	74, 17.609, 20.922
Yxy	46.0988, 0.3545, 0.3291
Android (android.graphics.Color)	4292324010 (0xFFD7AAAA)
YUV	183.4550, -6.6333, 27.6650
Hunter-Lab	67.8961, 11.7250, 8.8328

Details

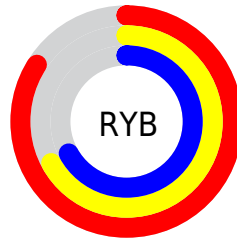
The YUV color $183.4550, -6.6333, 27.6650$ is a light color, and the websafe version is hex $CC9999$. A complement of this color would be $201.5450, 6.6333, -27.6650$, and the grayscale version is $184.0000, 0.0000, 0.0000$.

A 20% lighter version of the original color is $233.9700, -4.4222, 18.4433$, and $130.5580, -6.1911, 25.8206$ is the 20% darker color. If you saturate the color by 10%, you get $168.7340, -9.7289, 40.5753$, and if you desaturate by 10%, it is $198.8770, -3.3904, 14.1399$.

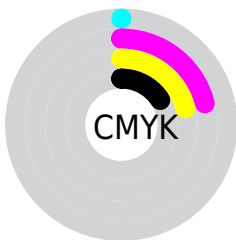
Distribution



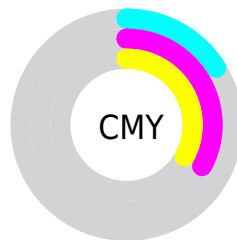
- Red (84%)
- Green (67%)
- Blue (67%)



- Red (84%)
- Yellow (67%)
- Blue (67%)



- Cyan (0%)
- Magenta (21%)
- Yellow (21%)
- Black (16%)



- Cyan (16%)
- Magenta (33%)
- Yellow (33%)

Brightness & Saturation Gradients

These gradients show how the YUV color 183.4550, -6.6333, 27.6650 changes by changing the brightness by 10 percent. The first figure shows a shift by +10% for each color and the second figure -10%.

Similar to the brightness gradients but the following saturation gradients show a change of the YUV color 183.4550, -6.6333, 27.6650 by changing the saturation by 10% instead.

■ 183.4550, -6.6333,
27.6650

■ 183.4550, -6.6333,
27.6650

■ 255.0000, 0.0000,
0.0000

■ 156.2700, -6.0491,
26.9502

■ 233.9700, -4.4222,
18.4433

■ 130.5580, -6.1911,
25.8206

■ 254.2990, -0.1474,
0.6148

■ 104.9600, -5.8963,
24.5911

■ 80.4760, -5.1647,
23.2615

■ 56.8780, -4.8699,
22.0320

■ 35.0950, -3.9908,
20.0877

■ 11.3620, -5.6015,

23.3615

0.0000, 0.0000,
0.0000

183.4550, -6.6333,
27.6650

183.4550, -6.6333,
27.6650

168.7340, -9.7289,
40.5753

198.8770, -3.3904,
14.1399

153.3120,
-12.9718, 54.1004

213.5980, -0.2948,
1.2296

138.5910,
-16.0674, 67.0107

229.0200, 2.9481,
-12.2955

123.1690,
-19.3103, 80.5358

243.0400, 5.8963,
-24.5911

107.7470,
-22.5533, 94.0609

■ 93.0260, -25.6488,
106.9712

■ 78.3050, -28.7444,
119.8815

■ 64.2850, -31.6925,
132.1771

Harmonies

Analogous

The Analogous color harmony consists of three colors that are next to each other on the color wheel.



183.7840, 1.0925, 22.9914



183.4550, -6.6333, 27.6650



182.1250, -12.8796, 24.4464

Triad

The Triadic color harmony groups three colors that are evenly spaced from another and form a triangle on the color wheel.



183.4550, -6.6333, 27.6650



177.3330, -8.5452, -12.5700



179.1190, 16.2103, -19.3984

Complementary

The Complementary color scheme is a pair of colors which are on the opposite of each other on the color wheel.



183.4550, -6.6333, 27.6650



201.5450, 6.6333, -27.6650

Split Complementary

Split-complementary colors differ from the complementary color scheme. The scheme consists of three colors, the original color and two neighbors of the complement color.



176.1840, 14.2063, -29.9794



183.4550, -6.6333, 27.6650



175.4330, -0.2135, -24.9357

Square

The Square scheme is like the rectangle color scheme, but the four colors are evenly spaced on the color wheel.



183.4550, -6.6333, 27.6650



178.7540, -13.6827, 1.9697



174.6800, 8.5388, -32.1684



181.7620, 14.4143, -3.2993

Rectangle

The Rectangle color scheme consists of four colors that form a rectangle on the color wheel.



183.4550, -6.6333, 27.6650



181.2230, -14.8999, 19.0984



174.6800, 8.5388, -32.1684



177.7980, 16.3686, -23.5018

Sweetspot

The Sweet Spot groups the original color and five complimentary colors.



183.4550, -6.6333, 27.6650



244.4850, -2.2111, 9.2217



188.5850, 13.0226, 23.1660



121.6910, -1.3267, 5.5330



0.0000, 0.0000, 0.0000



128.0000, 0.0000, 0.0000

Same Dimension

The Same Dimension uses a secret algorithm to generate beautiful new colors.



183.4550, -6.6333, 27.6650



210.1360, -9.4340, 39.3457



196.9560, -13.2893, 15.8246



99.2890, -1.6215, 6.7625



51.1290, -25.2066, 105.1269



12.8570, -6.3385, 26.4354

Inverse Universe

The Inverse Universe completely reimagines the original color for something new.



201.5450, 6.6333, -27.6650



235.8640, 9.4340, -39.3457



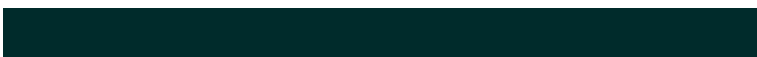
188.6310, 12.9999, -16.3394



103.7110, 1.6215, -6.7625



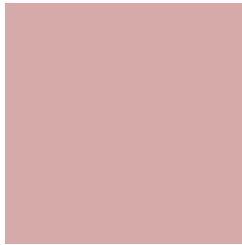
119.8710, 25.2066, -105.1269



30.1430, 6.3385, -26.4354

Previews

White Background



This preview shows how the YUV color 183.4550, -6.6333, 27.6650 looks on a white background.

Color Contrast Check

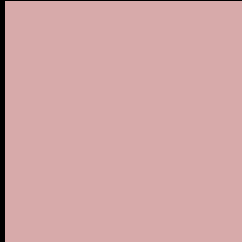
Large Text (above 18pt) WCAG AA × Fail

Any Text WCAG AA × Fail

Large Text (above 18pt) WCAG AAA × Fail

Any Text WCAG AAA × Fail

Black Background



This preview shows how the YUV color 183.4550, -6.6333, 27.6650 looks on a black background.

Color Contrast Check

Large Text (above 18pt) WCAG AA ✓ Pass

Any Text WCAG AA ✓ Pass

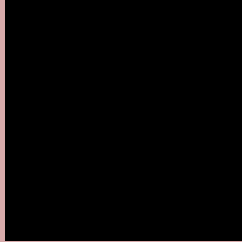
Large Text (above 18pt) WCAG AAA ✓ Pass

Any Text WCAG AAA ✓ Pass

If you want to check with other color combinations, try the [Color Contrast Checker](#).

YUV 183.4550, -6.6333, 27.6650

Background



This preview shows how black text looks on a background with the YUV color 183.4550, -6.6333, 27.6650.



This preview shows how white text looks on a background with the YUV color 183.4550, -6.6333,

27.6650.

Color Blindness Simulation

Color vision deficiency is a very complex topic, and I could not describe the different causes any better than Wikipedia does, so if you want to learn more, you should check out their [article about color blindness](#).

Dichromacy



Original Color

183.4550, -6.6333, 27.6650

Protanopia

181.3380, -2.6316, 4.0886

Deuteranopia

182.6880, -6.7482, 17.8136



Tritanopia

183.8340, -1.3972, 28.2096

Trichromacy



Original Color

183.4550, -6.6333, 27.6650

Protanomaly

182.0510, -3.9691, 13.1103

Deuteranomaly

182.7100, -6.7590, 21.3023

Tritanomaly

183.9650, -3.4337, 28.0947

Monochromacy



Original Color

183.4550, -6.6333, 27.6650

Achromatopsia

183.0000, 0.0000, 0.0000

Achromatomaly

183.0830, -2.5059, 10.4512

CSS Examples

Text

The CSS property to change the color of the text to YUV 183.4550, -6.6333, 27.6650 is called "color". The color property can be set on classes, ids or directly on the HTML element.

This example shows how text in the color `rgb(215, 170, 170)` looks like.

```
.text, #text, p{  
    color:rgb(215, 170, 170)  
}
```

If you want to add a text shadow in that color use the text-shadow property, you can generate a text shadow directly with our [CSS Text Shadow Generator](#).

Here you see how black text with a 4 pixel rgb(215, 170, 170) colored shadow looks like.

```
.shadow{ text-shadow: 4px 4px 2px rgb(215, 170, 170) }
```

Border

The CSS property to change the border of an element to YUV 183.4550, -6.6333, 27.6650 is called "border". The border property can be set on classes, ids or directly on the HTML element.

This example shows the color as border, it can be applied via the CSS property "border" or "border-color".

```
.border, #border, table{ border:4px solid rgb(215, 170, 170) }
```


If only the border color should be changed use the property `border-color`.

```
.border{ border-color:rgb(215, 170, 170) }
```

If you want to add a box shadow in that color use:

Here you see how a box with a 4 pixel `rgb(215, 170, 170)` colored shadow looks like.

```
.boxshadow{ -moz-box-shadow:4px 4px 4px  
4px rgb(215, 170, 170); -webkit-box-  
shadow:4px 4px 4px 4px rgb(215, 170, 170);  
box-shadow:4px 4px 4px 4px rgb(215, 170,  
170) }
```

Background

The CSS property to change the background color of an element to YUV 183.4550, -6.6333, 27.6650 is called "background". The background property can be set on classes, ids or directly on the HTML element.

```
.background, #background, body{  
background: rgb(215, 170, 170) }
```

If only the background color should be changed can be used:

```
.background{ background-color: rgb(215,  
170, 170) }
```

This example shows the color as background, it is applied via the CSS property "background".

To optimize and compress your CSS code, you can use our [online CSS compressor and optimizer](#) based on csstidy. If you want to create a linear or radial gradient as background or border, check our [CSS Gradient Generator](#).

Hey! You found this booklet interesting? Support Converting Colors with the new Membership Option!

The pro membership hides all ads, plus gives you double the colors in the color bucket, and more awesome pro features!

[Learn more, Memberships starting at \\$2.50/m!](#)

**Follow me
on Twitter!**

@ConvertingColor