

Converting Colors

YUV(183.6110, -6.7102, 5.6032)

Have a look what the booklet for
YUV(183.6110, -6.7102, 5.6032)
contains.

YUV(183.6110, -6.7102, 5.6032)	3
<i>Conversions</i>	4
<i>Details</i>	6
<i>Harmonies</i>	12
<i>Previews</i>	24
<i>Color Blindness Simulation</i>	28
<i>CSS Examples</i>	31

Color

**YUV(183.6110, -6.7102,
5.6032)**

Conversions

Conversions Part 1

Format	Color
Hex	BEB7AA
RGB	190, 183, 170
RGB Percent	75%, 72%, 67%
CMY	0.2549, 0.2824, 0.3333
CMYK	0.00, 0.04, 0.11, 0.25
HSL	39°, 13%, 71%
HSV	39°, 11%, 75%
XYZ	45.4244, 47.7164, 44.8463
YIQ	183.6110, 8.3450, -2.5590

Conversions

Conversions Part 2

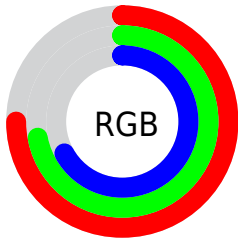
Format	Color
RYB	181, 190, 170
Decimal	12498858
CIELab	74.65, 0.20, 7.48
CIELCh	75, 7.483, 88.431
Yxy	47.7164, 0.3292, 0.3458
Android (android.graphics.Color)	4290688938 (0xFFBEB7AA)
YUV	183.6110, -6.7102, 5.6032
Hunter-Lab	69.0771, -3.5050, 9.8616

Details

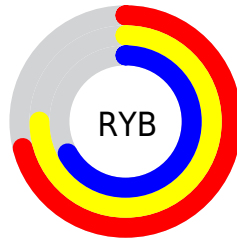
The YUV color $183.6110, -6.7102, 5.6032$ is a light color, and the websafe version is hex `CCCCCC`. A complement of this color would be $176.3890, 6.7102, -5.6032$, and the grayscale version is $184.0000, 0.0000, 0.0000$.

A 20% lighter version of the original color is $239.4970, -7.1470, 5.7031$, and $130.7250, -6.2734, 5.5032$ is the 20% darker color. If you saturate the color by 10%, you get $177.3360, -12.9836, 11.1063$, and if you desaturate by 10%, it is $189.8860, -0.4368, 0.1000$.

Distribution



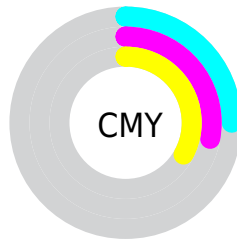
- Red (75%)
- Green (72%)
- Blue (67%)



- Red (71%)
- Yellow (75%)
- Blue (67%)



- Cyan (0%)
- Magenta (4%)
- Yellow (11%)
- Black (25%)



- Cyan (25%)
- Magenta (28%)
- Yellow (33%)

Brightness & Saturation Gradients

These gradients show how the YUV color 183.6110, -6.7102, 5.6032 changes by changing the brightness by 10 percent. The first figure shows a shift by +10% for each color and the second figure -10%.

Similar to the brightness gradients but the following saturation gradients show a change of the YUV color 183.6110, -6.7102, 5.6032 by changing the saturation by 10% instead.

■ 183.6110, -6.7102,
5.6032

■ 183.6110, -6.7102,
5.6032

255.0000, 0.0000,
0.0000

■ 156.7250, -6.2734,
5.5032

■ 239.4970, -7.1470,
5.7031

■ 130.7250, -6.2734,
5.5032

254.8860, -0.4368,
0.1000

■ 105.4260, -6.1260,
4.8884

■ 81.5400, -5.6892,
4.7884

■ 58.2410, -5.5418,
4.1736

■ 36.4690, -4.6682,
3.9737

■ 15.3830, -7.5838,

5.8031

■ 0.0000, 0.0000,
0.0000

■ 183.6110, -6.7102,
5.6032

■ 183.6110, -6.7102,
5.6032

■ 177.3360,
-12.9836, 11.1063

■ 189.8860, -0.4368,
0.1000

■ 171.6480,
-19.5465, 16.0947

■ 195.5740, 6.1260,
-4.8884

■ 165.3730,
-25.8199, 21.5979

■ 201.8490, 12.3994,
-10.3916

■ 159.0980,
-32.0933, 27.1011

■ 208.1240, 18.6729,
-15.8947

■ 153.4100,
-38.6561, 32.0894

■ 212.6720, 20.8677,
-19.8833

■ 147.1350,
-44.9296, 37.5926

■ 216.7810, 18.8420,
-23.4869

■ 140.8600,
-51.2030, 43.0958

■ 220.8900, 16.8162,
-27.0905

■ 135.1720,
-57.7658, 48.0842

■ 224.4120, 15.0799,
-30.1793

■ 129.5980,
-63.8918, 52.9726

■ 228.5210, 13.0541,
-33.7829

Harmonies

Analogous

The Analogous color harmony consists of three colors that are next to each other on the color wheel.



184.4590, -6.1423, 10.1215



183.6110, -6.7102, 5.6032



182.6210, -5.2362, -0.5446

Triad

The Triadic color harmony groups three colors that are evenly spaced from another and form a triangle on the color wheel.



183.6110, -6.7102, 5.6032



181.9490, 3.9691, -13.1103



185.1410, 2.8885, 6.8923

Complementary

The Complementary color scheme is a pair of colors which are on the opposite of each other on the color wheel.



183.6110, -6.7102, 5.6032



176.3890, 6.7102, -5.6032

Split Complementary

Split-complementary colors differ from the complementary color scheme. The scheme consists of three colors, the original color and two neighbors of the complement color.



184.4930, 5.6730, 0.4446



183.6110, -6.7102, 5.6032



182.2420, 6.2897, -10.7362

Square

The Square scheme is like the rectangle color scheme, but the four colors are evenly spaced on the color wheel.



183.6110, -6.7102, 5.6032



181.7490, 0.6167, -11.1809



183.0900, 6.8576, -6.2179



185.2510, -0.6167, 11.1809

Rectangle

The Rectangle color scheme consists of four colors that form a rectangle on the color wheel.



183.6110, -6.7102, 5.6032



181.9410, -3.9149, -4.3333



183.0900, 6.8576, -6.2179



185.0590, 3.9149, 4.3333

Sweetspot

The Sweet Spot groups the original color and five complimentary colors.



183.6110, -6.7102, 5.6032



245.0280, -2.4788, 1.7294



176.7780, 0.1094, 11.5957



123.2560, -1.6052, 1.5295



252.0000, 0.0000, 0.0000



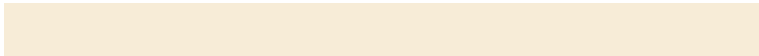
125.0000, 0.0000, 0.0000

Same Dimension

The Same Dimension uses a secret algorithm to generate beautiful new colors.



183.6110, -6.7102, 5.6032



236.8950, -10.7942, 8.8621



186.8230, -8.2937, 0.1552



91.2130, -3.0630, 2.4442



107.7030, -53.0976, 44.1105



21.0090, -10.3574, 8.7621

Inverse Universe

The Inverse Universe completely reimagines the original color for something new.



176.3890, 6.7102, -5.6032



225.1050, 10.7942, -8.8621



173.1770, 8.2937, -0.1552



87.7870, 3.0630, -2.4442



50.2970, 53.0976, -44.1105



9.9910, 10.3574, -8.7621

Previews

White Background



This preview shows how the YUV color 183.6110, -6.7102, 5.6032 looks on a white background.

Color Contrast Check

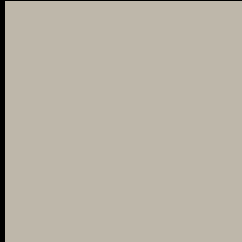
Large Text (above 18pt) WCAG AA × Fail

Any Text WCAG AA × Fail

Large Text (above 18pt) WCAG AAA × Fail

Any Text WCAG AAA × Fail

Black Background



This preview shows how the YUV color 183.6110, -6.7102, 5.6032 looks on a black background.

Color Contrast Check

Large Text (above 18pt) WCAG AA ✓ Pass

Any Text WCAG AA ✓ Pass

Large Text (above 18pt) WCAG AAA ✓ Pass

Any Text WCAG AAA ✓ Pass

If you want to check with other color combinations, try the [Color Contrast Checker](#).

YUV 183.6110, -6.7102, 5.6032

Background



This preview shows how black text looks on a background with the YUV color 183.6110, -6.7102, 5.6032.

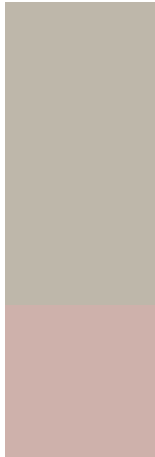


This preview shows how white text looks on a background with the YUV color 183.6110, -6.7102,

Color Blindness Simulation

Color vision deficiency is a very complex topic, and I could not describe the different causes any better than Wikipedia does, so if you want to learn more, you should check out their [article about color blindness](#).

Dichromacy



Original Color

183.6110, -6.7102, 5.6032

Protanopia

183.6110, -6.7102, 5.6032

Deuteranopia

184.9870, -6.8956, 18.4284



Tritanopia

184.8960, 4.4883, 7.1072

Trichromacy



Original Color

183.6110, -6.7102, 5.6032

Protanomaly

183.6110, -6.7102, 5.6032

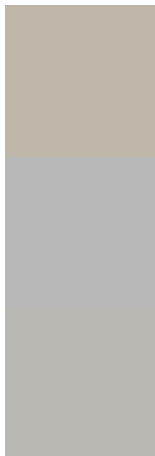
Deuteranomaly

184.3670, -6.5899, 13.7101

Tritanomaly

184.1580, 0.4151, 6.8774

Monochromacy



Original Color

183.6110, -6.7102, 5.6032

Achromatopsia

184.0000, 0.0000, 0.0000

Achromatomaly

184.0280, -2.4788, 1.7294

CSS Examples

Text

The CSS property to change the color of the text to YUV 183.6110, -6.7102, 5.6032 is called "color". The color property can be set on classes, ids or directly on the HTML element.

This example shows how text in the color `rgb(190, 183, 170)` looks like.

```
.text, #text, p{  
    color:rgb(190, 183, 170)  
}
```

If you want to add a text shadow in that color use the text-shadow property, you can generate a text shadow directly with our [CSS Text Shadow Generator](#).

Here you see how black text with a 4 pixel rgb(190, 183, 170) colored shadow looks like.

```
.shadow{ text-shadow: 4px 4px 2px rgb(190, 183, 170) }
```

Border

The CSS property to change the border of an element to YUV 183.6110, -6.7102, 5.6032 is called "border". The border property can be set on classes, ids or directly on the HTML element.

This example shows the color as border, it can be applied via the CSS property "border" or "border-color".

```
.border, #border, table{ border:4px solid rgb(190, 183, 170) }
```


If only the border color should be changed use the property `border-color`.

```
.border{ border-color:rgb(190, 183, 170) }
```

If you want to add a box shadow in that color use:

Here you see how a box with a 4 pixel `rgb(190, 183, 170)` colored shadow looks like.

```
.boxshadow{ -moz-box-shadow:4px 4px 4px  
4px rgb(190, 183, 170); -webkit-box-  
shadow:4px 4px 4px 4px rgb(190, 183, 170);  
box-shadow:4px 4px 4px 4px rgb(190, 183,  
170) }
```

Background

The CSS property to change the background color of an element to YUV 183.6110, -6.7102, 5.6032 is called "background". The background property can be set on classes, ids or directly on the HTML element.

```
.background, #background, body{  
background: rgb(190, 183, 170) }
```

If only the background color should be changed can be used:

```
.background{ background-color: rgb(190,  
183, 170) }
```

This example shows the color as background, it is applied via the CSS property "background".

To optimize and compress your CSS code, you can use our [online CSS compressor and optimizer](#) based on csstidy. If you want to create a linear or radial gradient as background or border, check our [CSS Gradient Generator](#).

Hey! You found this booklet interesting? Support Converting Colors with the new Membership Option!

The pro membership hides all ads, plus gives you double the colors in the color bucket, and more awesome pro features!

[Learn more, Memberships starting at \\$2.50/m!](#)

**Follow me
on Twitter!**

@ConvertingColor