

Converting Colors

YUV(183.8430, -15.2056,
23.8167)

Have a look what the booklet for
YUV(183.8430, -15.2056, 23.8167)
contains.

YUV(183.8430, -15.2056, 23.8167)	3
<i>Conversions</i>	4
<i>Details</i>	6
<i>Harmonies</i>	12
<i>Previews</i>	24
<i>Color Blindness Simulation</i>	28
<i>CSS Examples</i>	31

Color

**YUV(183.8430, -15.2056,
23.8167)**

Conversions

Conversions Part 1

Format	Color
Hex	D3B099
RGB	211, 176, 153
RGB Percent	83%, 69%, 60%
CMY	0.1725, 0.3098, 0.4000
CMYK	0.00, 0.17, 0.27, 0.17
HSL	24°, 40%, 71%
HSV	24°, 27%, 83%
XYZ	48.1391, 47.1995, 36.7102
YIQ	183.8430, 28.2430, 0.2670

Conversions

Conversions Part 2

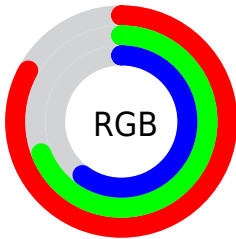
Format	Color
R_{YB}	211, 191, 153
Decimal	13873305
CIE _{Lab}	74.32, 9.26, 16.52
CIE _{LCh}	74, 18.937, 60.732
Yxy	47.1995, 0.3646, 0.3574
Android (android.graphics.Color)	4292063385 (0xFFD3B099)
YUV	183.8430, -15.2056, 23.8167
Hunter-Lab	68.7019, 4.8458, 16.4102

Details

The YUV color **183.8430, -15.2056, 23.8167** is a light color, and the websafe version is hex **CC9999**. A complement of this color would be **180.1570, 15.2056, -23.8167**, and the grayscale version is **184.0000, 0.0000, 0.0000**.

A 20% lighter version of the original color is **236.0270, -14.3103, 16.6393**, and **130.4730, -14.0372, 22.3872** is the 20% darker color. If you saturate the color by 10%, you get **173.8180, -20.6163, 32.6086**, and if you desaturate by 10%, it is **193.8680, -9.7949, 15.0248**.

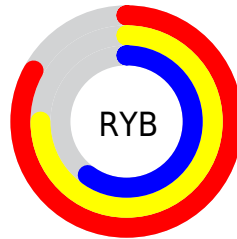
Distribution



Red (83%)

Green (69%)

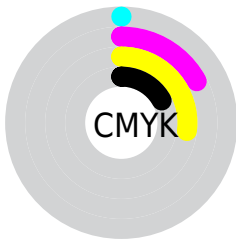
Blue (60%)



Red (83%)

Yellow (75%)

Blue (60%)

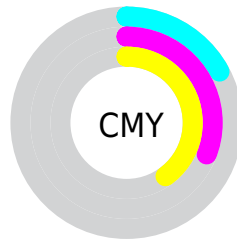


Cyan (0%)

Magenta (17%)

Yellow (27%)

Black (17%)



Cyan (17%)

Magenta (31%)

Yellow (40%)

Brightness & Saturation Gradients

These gradients show how the YUV color 183.8430, -15.2056, 23.8167 changes by changing the brightness by 10 percent. The first figure shows a shift by +10% for each color and the second figure -10%.

Similar to the brightness gradients but the following saturation gradients show a change of the YUV color 183.8430, -15.2056, 23.8167 by changing the saturation by 10% instead.

■ 183.8430,
-15.2056, 23.8167

■ 183.8430,
-15.2056, 23.8167

255.0000, 0.0000,
0.0000

■ 156.6580,
-14.6214, 23.1019

■ 236.0270,
-14.3103, 16.6393

■ 130.4730,
-14.0372, 22.3872

■ 252.8340, -8.2992,
1.8996

■ 105.5760,
-13.5950, 20.5428

■ 81.0920, -12.8634,
19.2133

■ 57.6080, -12.1317,
17.8838

■ 35.7110, -11.6895,
16.0395

■ 14.2640, -7.0322,

15.5545

■ 0.0000, 0.0000,
0.0000

■ 183.8430,
-15.2056, 23.8167

■ 183.8430,
-15.2056, 23.8167

■ 173.8180,
-20.6163, 32.6086

■ 193.8680, -9.7949,
15.0248

■ 164.3800,
-26.3163, 40.8857

■ 203.3060, -4.0949,
6.7476

■ 154.3550,
-31.7270, 49.6777

■ 213.3310, 1.3158,
-2.0443

■ 144.3300,
-37.1377, 58.4696

■ 223.3560, 6.7265,
-10.8362

■ 134.1910,
-42.9852, 67.3615

■ 233.0390, 10.8268,
-19.3282

■ 124.7530,
-48.6852, 75.6386

■ 240.0830, 7.3541,
-25.5058

■ 114.7280,
-54.0959, 84.4305

■ 241.8440, 6.4859,
-27.0502

■ 112.3970,
-55.4117, 86.4748

Harmonies

Analogous

The Analogous color harmony consists of three colors that are next to each other on the color wheel.



185.3690, -9.5489, 29.4944



183.8430, -15.2056, 23.8167



182.3100, -16.9148, 12.0061

Triad

The Triadic color harmony groups three colors that are evenly spaced from another and form a triangle on the color wheel.



183.8430, -15.2056, 23.8167



176.6110, 3.1498, -30.3538



184.6810, 13.9613, 2.0338

Complementary

The Complementary color scheme is a pair of colors which are on the opposite of each other on the color wheel.



183.8430, -15.2056, 23.8167



180.1570, 15.2056, -23.8167

Split Complementary

Split-complementary colors differ from the complementary color scheme. The scheme consists of three colors, the original color and two neighbors of the complement color.



181.7820, 17.3625, -15.5948



183.8430, -15.2056, 23.8167



176.1680, 11.7492, -35.2273

Square

The Square scheme is like the rectangle color scheme, but the four colors are evenly spaced on the color wheel.



183.8430, -15.2056, 23.8167



177.8700, -6.3449, -18.3030



178.2810, 17.1165, -30.0644



185.9450, 6.9291, 17.5882

Rectangle

The Rectangle color scheme consists of four colors that form a rectangle on the color wheel.



183.8430, -15.2056, 23.8167



180.4120, -14.9931, 2.2697



178.2810, 17.1165, -30.0644



183.6910, 15.4353, -4.1140

Sweetspot

The Sweet Spot groups the original color and five complimentary colors.



183.8430, -15.2056, 23.8167



245.6760, -5.2633, 8.1771



174.4460, 7.1751, 32.0579



121.8220, -3.3632, 5.4181



0.0000, 0.0000, 0.0000



128.0000, 0.0000, 0.0000

Same Dimension

The Same Dimension uses a secret algorithm to generate beautiful new colors.



183.8430, -15.2056, 23.8167



215.4870, -21.9321, 34.6529



200.2790, -23.3085, 9.4023



99.6370, -2.7790, 4.7034



89.5610, -44.1536, 68.7910



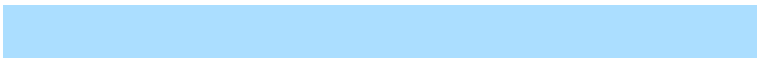
21.6510, -10.6739, 16.9691

Inverse Universe

The Inverse Universe completely reimagines the original color for something new.



180.1570, 15.2056, -23.8167



210.5130, 21.9321, -34.6529



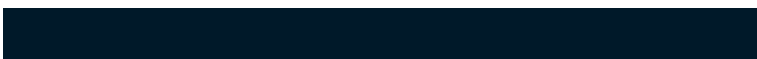
163.7210, 23.3085, -9.4023



98.7760, 3.0684, -4.1886



79.0260, 43.8642, -69.3058



19.3490, 10.6739, -16.9691

Previews

White Background



This preview shows how the YUV color 183.8430, -15.2056, 23.8167 looks on a white background.

Color Contrast Check

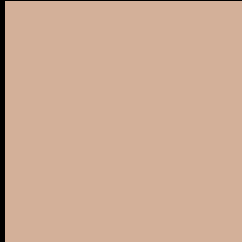
Large Text (above 18pt) WCAG AA × Fail

Any Text WCAG AA × Fail

Large Text (above 18pt) WCAG AAA × Fail

Any Text WCAG AAA × Fail

Black Background



This preview shows how the YUV color 183.8430, -15.2056, 23.8167 looks on a black background.

Color Contrast Check

Large Text (above 18pt) WCAG AA ✓ Pass

Any Text WCAG AA ✓ Pass

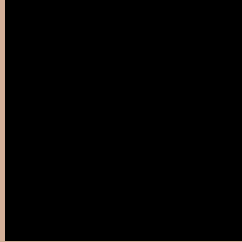
Large Text (above 18pt) WCAG AAA ✓ Pass

Any Text WCAG AAA ✓ Pass

If you want to check with other color combinations, try the [Color Contrast Checker](#).

YUV 183.8430, -15.2056, 23.8167

Background



This preview shows how black text looks on a background with the YUV color 183.8430, -15.2056, 23.8167.



This preview shows how white text looks on a background with the YUV color 183.8430, -15.2056, 23.8167.

23.8167.

Color Blindness Simulation

Color vision deficiency is a very complex topic, and I could not describe the different causes any better than Wikipedia does, so if you want to learn more, you should check out their [article about color blindness](#).

Dichromacy



Original Color

183.8430, -15.2056, 23.8167

Protanopia

182.0260, -12.8308, 8.7472

Deuteranopia

183.8430, -15.2056, 23.8167



Tritanopia

185.7520, -0.3707, 25.6505

Trichromacy



Original Color

183.8430, -15.2056, 23.8167

Protanomaly

182.8310, -13.7207, 14.1802

Deuteranomaly

183.8430, -15.2056, 23.8167

Tritanomaly

185.2590, -6.0437, 25.2059

Monochromacy



Original Color

183.8430, -15.2056, 23.8167

Achromatopsia

184.0000, 0.0000, 0.0000

Achromatomaly

183.9750, -5.4107, 8.7919

CSS Examples

Text

The CSS property to change the color of the text to YUV 183.8430, -15.2056, 23.8167 is called "color". The color property can be set on classes, ids or directly on the HTML element.

This example shows how text in the color `rgb(211, 176, 153)` looks like.

```
.text, #text, p{  
    color:rgb(211, 176, 153)  
}
```

If you want to add a text shadow in that color use the text-shadow property, you can generate a text shadow directly with our [CSS Text Shadow Generator](#).

Here you see how black text with a 4 pixel rgb(211, 176, 153) colored shadow looks like.

```
.shadow{ text-shadow: 4px 4px 2px rgb(211, 176, 153) }
```

Border

The CSS property to change the border of an element to YUV 183.8430, -15.2056, 23.8167 is called "border".

The border property can be set on classes, ids or directly on the HTML element.

This example shows the color as border, it can be applied via the CSS property "border" or "border-color".

```
.border, #border, table{ border:4px solid rgb(211, 176, 153) }
```


If only the border color should be changed use the property `border-color`.

```
.border{ border-color:rgb(211, 176, 153) }
```

If you want to add a box shadow in that color use:

Here you see how a box with a 4 pixel `rgb(211, 176, 153)` colored shadow looks like.

```
.boxshadow{ -moz-box-shadow:4px 4px 4px  
4px rgb(211, 176, 153); -webkit-box-  
shadow:4px 4px 4px 4px rgb(211, 176, 153);  
box-shadow:4px 4px 4px 4px rgb(211, 176,  
153) }
```

Background

The CSS property to change the background color of an element to YUV 183.8430, -15.2056, 23.8167 is called "background". The background property can be set on classes, ids or directly on the HTML element.

```
.background, #background, body{  
background: rgb(211, 176, 153) }
```

If only the background color should be changed can be used:

```
.background{ background-color: rgb(211,  
176, 153) }
```

This example shows the color as background, it is applied via the CSS property "background".

To optimize and compress your CSS code, you can use our [online CSS compressor and optimizer](#) based on csstidy. If you want to create a linear or radial gradient as background or border, check our [CSS Gradient Generator](#).

Hey! You found this booklet interesting? Support Converting Colors with the new Membership Option!

The pro membership hides all ads, plus gives you double the colors in the color bucket, and more awesome pro features!

[Learn more, Memberships starting at \\$2.50/m!](#)

**Follow me
on Twitter!**

@ConvertingColor