

Converting Colors

YUV(183.9420, -18.7054,
26.3609)

Have a look what the booklet for
YUV(183.9420, -18.7054, 26.3609)
contains.

YUV(183.9420, -18.7054, 26.3609)	3
<i>Conversions</i>	4
<i>Details</i>	6
<i>Harmonies</i>	12
<i>Previews</i>	24
<i>Color Blindness Simulation</i>	28
<i>CSS Examples</i>	31

Color

**YUV(183.9420, -18.7054,
26.3609)**

Conversions

Conversions Part 1

Format	Color
Hex	D6B092
RGB	214, 176, 146
RGB Percent	84%, 69%, 57%
CMY	0.1608, 0.3098, 0.4275
CMYK	0.00, 0.18, 0.32, 0.16
HSL	26°, 45%, 71%
HSV	26°, 32%, 84%
XYZ	48.4452, 47.4221, 33.7942
YIQ	183.9420, 32.2780, -1.2740

Conversions

Conversions Part 2

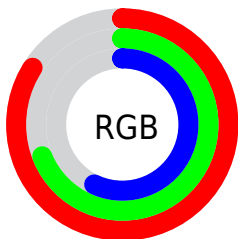
Format	Color
R_{YB}	214, 200, 146
Decimal	14069906
CIE _{Lab}	74.46, 9.49, 20.55
CIE _{LCh}	74, 22.637, 65.214
Yxy	47.4221, 0.3736, 0.3657
Android (android.graphics.Color)	4292259986 (0xFFD6B092)
YUV	183.9420, -18.7054, 26.3609
Hunter-Lab	68.8637, 5.0621, 19.1086

Details

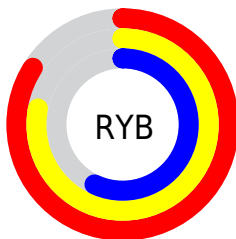
The YUV color **183.9420, -18.7054, 26.3609** is a light color, and the websafe version is hex **CC9966**. A complement of this color would be **176.0580, 18.7054, -26.3609**, and the grayscale version is **184.0000, 0.0000, 0.0000**.

A 20% lighter version of the original color is **235.2290, -17.3679, 17.3392**, and **130.8600, -17.6790, 23.8018** is the 20% darker color. If you saturate the color by 10%, you get **174.5040, -24.4055, 34.6380**, and if you desaturate by 10%, it is **193.3800, -13.0053, 18.0837**.

Distribution



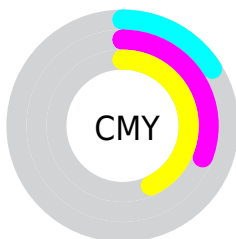
- Red (84%)
- Green (69%)
- Blue (57%)



- Red (84%)
- Yellow (78%)
- Blue (57%)



- Cyan (0%)
- Magenta (18%)
- Yellow (32%)
- Black (16%)



- Cyan (16%)
- Magenta (31%)
- Yellow (43%)

Brightness & Saturation Gradients

These gradients show how the YUV color 183.9420, -18.7054, 26.3609 changes by changing the brightness by 10 percent. The first figure shows a shift by +10% for each color and the second figure -10%.

Similar to the brightness gradients but the following saturation gradients show a change of the YUV color 183.9420, -18.7054, 26.3609 by changing the saturation by 10% instead.

■ 183.9420,
-18.7054, 26.3609

■ 183.9420,
-18.7054, 26.3609

255.0000, 0.0000,
0.0000

■ 156.7570,
-18.1212, 25.6461

■ 235.2290,
-17.3679, 17.3392

■ 130.8600,
-17.6790, 23.8018

■ 251.9220,
-11.7935, 2.6994

■ 105.3760,
-16.9474, 22.4722

■ 81.0060, -15.7790,
21.0427

■ 57.5220, -15.0473,
19.7132

■ 35.1690, -16.3523,
18.2688

■ 14.5630, -7.1796,

16.1692

■ 0.0000, 0.0000,
0.0000

■ 183.9420,
-18.7054, 26.3609

■ 183.9420,
-18.7054, 26.3609

■ 174.5040,
-24.4055, 34.6380

■ 193.3800,
-13.0053, 18.0837

■ 164.9520,
-30.5423, 43.0151

■ 202.9320, -6.8685,
9.7066

■ 155.5140,
-36.2424, 51.2922

■ 212.3700, -1.1684,
1.4295

■ 145.9620,
-42.3793, 59.6693

■ 221.9220, 4.9685,
-6.9476

■ 136.5240,
-48.0793, 67.9465

■ 231.3600, 10.6685,
-15.2247

■ 127.0860,
-53.7794, 76.2236

■ 238.6320, 8.0694,
-21.6023

■ 119.1640,
-58.7479, 83.1712

■ 242.7410, 6.0437,
-25.2059

Harmonies

Analogous

The Analogous color harmony consists of three colors that are next to each other on the color wheel.



185.3050, -12.4754, 34.8125



183.9420, -18.7054, 26.3609



181.9140, -19.6776, 11.4764

Triad

The Triadic color harmony groups three colors that are evenly spaced from another and form a triangle on the color wheel.



183.9420, -18.7054, 26.3609



174.5390, 5.6503, -39.0607



185.7460, 15.4082, 4.6078

Complementary

The Complementary color scheme is a pair of colors which are on the opposite of each other on the color wheel.



183.9420, -18.7054, 26.3609



176.0580, 18.7054, -26.3609

Split Complementary

Split-complementary colors differ from the complementary color scheme. The scheme consists of three colors, the original color and two neighbors of the complement color.



182.5800, 20.4201, -16.2947



183.9420, -18.7054, 26.3609



174.7370, 15.4127, -43.6193

Square

The Square scheme is like the rectangle color scheme, but the four colors are evenly spaced on the color wheel.



183.9420, -18.7054, 26.3609



176.6520, -5.7444, -24.2508



177.8720, 20.7691, -34.9677



186.9780, 6.9128, 22.8213

Rectangle

The Rectangle color scheme consists of four colors that form a rectangle on the color wheel.



183.9420, -18.7054, 26.3609



180.1190, -17.3137, -0.1044



177.8720, 20.7691, -34.9677



184.6850, 17.9033, -2.3547

Sweetspot

The Sweet Spot groups the original color and five complimentary colors.



183.9420, -18.7054, 26.3609



243.9320, -6.8685, 9.7066



170.7780, 7.0114, 37.9057



120.8930, -4.3842, 6.2328



0.0000, 0.0000, 0.0000



128.0000, 0.0000, 0.0000

Same Dimension

The Same Dimension uses a secret algorithm to generate beautiful new colors.



183.9420, -18.7054, 26.3609



212.2440, -26.7423, 37.4970



203.3130, -28.2553, 9.3725



102.2240, -3.0684, 4.1886



95.1540, -46.9109, 66.5169



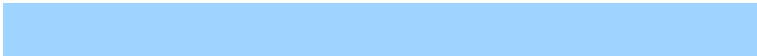
24.0100, -11.8369, 16.6542

Inverse Universe

The Inverse Universe completely reimagines the original color for something new.



176.0580, 18.7054, -26.3609



200.7560, 26.7423, -37.4970



156.6870, 28.2553, -9.3725



100.7760, 3.0684, -4.1886



75.2590, 47.2003, -66.0021



18.9900, 11.8369, -16.6542

Previews

White Background



This preview shows how the YUV color 183.9420, -18.7054, 26.3609 looks on a white background.

Color Contrast Check

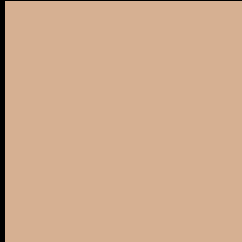
Large Text (above 18pt) WCAG AA × Fail

Any Text WCAG AA × Fail

Large Text (above 18pt) WCAG AAA × Fail

Any Text WCAG AAA × Fail

Black Background



This preview shows how the YUV color 183.9420, -18.7054, 26.3609 looks on a black background.

Color Contrast Check

Large Text (above 18pt) WCAG AA ✓ Pass

Any Text WCAG AA ✓ Pass

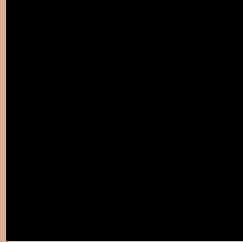
Large Text (above 18pt) WCAG AAA ✓ Pass

Any Text WCAG AAA ✓ Pass

If you want to check with other color combinations, try the [Color Contrast Checker](#).

YUV 183.9420, -18.7054, 26.3609

Background



This preview shows how black text looks on a background with the YUV color 183.9420, -18.7054, 26.3609.



This preview shows how white text looks on a background with the YUV color 183.9420, -18.7054,

Color Blindness Simulation

Color vision deficiency is a very complex topic, and I could not describe the different causes any better than Wikipedia does, so if you want to learn more, you should check out their [article about color blindness](#).

Dichromacy



Original Color

183.9420, -18.7054, 26.3609

Protanopia

182.4130, -16.4726, 10.1618

Deuteranopia

183.9420, -18.7054, 26.3609



Tritanopia

186.5350, -1.2498, 27.5948

Trichromacy



Original Color

183.9420, -18.7054, 26.3609

Protanomaly

182.6310, -17.0731, 16.1096

Deuteranomaly

183.9420, -18.7054, 26.3609

Tritanomaly

185.8140, -7.7963, 27.3501

Monochromacy



Original Color

183.9420, -18.7054, 26.3609

Achromatopsia

184.0000, 0.0000, 0.0000

Achromatomaly

183.9320, -6.8685, 9.7066

CSS Examples

Text

The CSS property to change the color of the text to YUV 183.9420, -18.7054, 26.3609 is called "color". The color property can be set on classes, ids or directly on the HTML element.

This example shows how text in the color `rgb(214, 176, 146)` looks like.

```
.text, #text, p{  
    color:rgb(214, 176, 146)  
}
```

If you want to add a text shadow in that color use the text-shadow property, you can generate a text shadow directly with our [CSS Text Shadow Generator](#).

Here you see how black text with a 4 pixel rgb(214, 176, 146) colored shadow looks like.

```
.shadow{ text-shadow: 4px 4px 2px rgb(214, 176, 146) }
```

Border

The CSS property to change the border of an element to YUV 183.9420, -18.7054, 26.3609 is called "border".

The border property can be set on classes, ids or directly on the HTML element.

This example shows the color as border, it can be applied via the CSS property "border" or "border-color".

```
.border, #border, table{ border:4px solid rgb(214, 176, 146) }
```


If only the border color should be changed use the property `border-color`.

```
.border{ border-color:rgb(214, 176, 146) }
```

If you want to add a box shadow in that color use:

Here you see how a box with a 4 pixel `rgb(214, 176, 146)` colored shadow looks like.

```
.boxshadow{ -moz-box-shadow:4px 4px 4px  
4px rgb(214, 176, 146); -webkit-box-  
shadow:4px 4px 4px 4px rgb(214, 176, 146);  
box-shadow:4px 4px 4px 4px rgb(214, 176,  
146) }
```

Background

The CSS property to change the background color of an element to YUV 183.9420, -18.7054, 26.3609 is called "background". The background property can be set on classes, ids or directly on the HTML element.

```
.background, #background, body{  
background: rgb(214, 176, 146) }
```

If only the background color should be changed can be used:

```
.background{ background-color: rgb(214,  
176, 146) }
```

This example shows the color as background, it is applied via the CSS property "background".

To optimize and compress your CSS code, you can use our [online CSS compressor and optimizer](#) based on csstidy. If you want to create a linear or radial gradient as background or border, check our [CSS Gradient Generator](#).

Hey! You found this booklet interesting? Support Converting Colors with the new Membership Option!

The pro membership hides all ads, plus gives you double the colors in the color bucket, and more awesome pro features!

[Learn more, Memberships starting at \\$2.50/m!](#)

**Follow me
on Twitter!**

@ConvertingColor