

Converting Colors

YUV(184.1110, -4.9847,
12.1807)

Have a look what the booklet for
YUV(184.1110, -4.9847, 12.1807)
contains.

YUV(184.1110, -4.9847, 12.1807)	3
<i>Conversions</i>	4
<i>Details</i>	6
<i>Harmonies</i>	12
<i>Previews</i>	24
<i>Color Blindness Simulation</i>	28
<i>CSS Examples</i>	31

Color

**YUV(184.1110, -4.9847,
12.1807)**

Conversions

Conversions Part 1

Format	Color
Hex	C6B3AE
RGB	198, 179, 174
RGB Percent	78%, 70%, 68%
CMY	0.2235, 0.2980, 0.3176
CMYK	0.00, 0.10, 0.12, 0.22
HSL	12°, 17%, 73%
HSV	12°, 12%, 78%
XYZ	47.0488, 47.3020, 46.6949
YIQ	184.1110, 12.9290, 2.4730

Conversions

Conversions Part 2

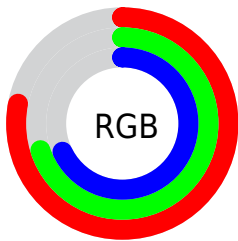
Format	Color
R_{YB}	198, 180, 174
Decimal	13022126
CIE _{Lab}	74.38, 5.94, 5.01
CIE _{LCh}	74, 7.774, 40.119
Yxy	47.3020, 0.3336, 0.3354
Android (android.graphics.Color)	4291212206 (0xFFC6B3AE)
YUV	184.1110, -4.9847, 12.1807
Hunter-Lab	68.7764, 1.7501, 7.8893

Details

The YUV color $184.1110, -4.9847, 12.1807$ is a light color, and the websafe version is hex `CCCCCC`. A complement of this color would be $187.8890, 4.9847, -12.1807$, and the grayscale version is $184.0000, 0.0000, 0.0000$.

A 20% lighter version of the original color is $240.2960, -5.5689, 12.8954$, and $130.9260, -4.4005, 11.4659$ is the 20% darker color. If you saturate the color by 10%, you get $172.4390, -9.0904, 22.4170$, and if you desaturate by 10%, it is $195.7830, -0.8790, 1.9443$.

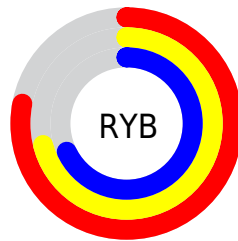
Distribution



Red (78%)

Green (70%)

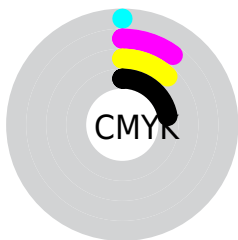
Blue (68%)



Red (78%)

Yellow (71%)

Blue (68%)

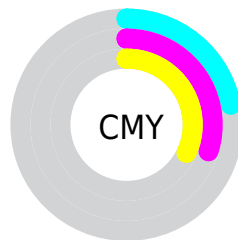


Cyan (0%)

Magenta (10%)

Yellow (12%)

Black (22%)



Cyan (22%)

Magenta (30%)

Yellow (32%)

Brightness & Saturation Gradients

These gradients show how the YUV color 184.1110, -4.9847, 12.1807 changes by changing the brightness by 10 percent. The first figure shows a shift by +10% for each color and the second figure -10%.

Similar to the brightness gradients but the following saturation gradients show a change of the YUV color 184.1110, -4.9847, 12.1807 by changing the saturation by 10% instead.

■ 184.1110, -4.9847,
12.1807

■ 184.1110, -4.9847,
12.1807

255.0000, 0.0000,
0.0000

■ 157.1110, -4.9847,
12.1807

■ 240.2960, -5.5689,
12.8954

■ 130.9260, -4.4005,
11.4659

■ 105.6270, -4.2531,
10.8511

■ 81.3280, -4.1057,
10.2363

■ 59.0290, -3.9583,
9.6216

■ 36.8440, -3.3741,
8.9068

■ 15.2850, -5.5635,

11.1511

■ 0.0000, 0.0000,
0.0000

■ 184.1110, -4.9847,
12.1807

■ 184.1110, -4.9847,
12.1807

■ 172.4390, -9.0904,
22.4170

■ 195.7830, -0.8790,
1.9443

■ 161.3540,
-13.4855, 32.1385

■ 206.8680, 3.5161,
-7.7772

■ 149.7960,
-17.1544, 42.2749

■ 218.4260, 7.1850,
-17.9136

■ 138.1240,
-21.2601, 52.5113

■ 230.0980, 11.2907,
-28.1499

■ 127.0390,
-25.6552, 62.2328

■ 237.9570, 8.4022,
-35.0423

■ 115.3670,
-29.7609, 72.4691

■ 103.6950,
-33.8666, 82.7055

■ 92.7240, -37.8249,
92.3271

■ 83.2690, -41.0516,
100.6191

Harmonies

Analogous

The Analogous color harmony consists of three colors that are next to each other on the color wheel.



184.3220, -1.6377, 11.9956



184.1110, -4.9847, 12.1807



183.6330, -6.7211, 9.0919

Triad

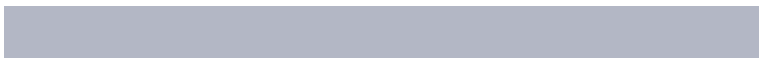
The Triadic color harmony groups three colors that are evenly spaced from another and form a triangle on the color wheel.



184.1110, -4.9847, 12.1807



181.1900, -1.5727, -8.9366



183.4000, 6.7048, -3.8588

Complementary

The Complementary color scheme is a pair of colors which are on the opposite of each other on the color wheel.



184.1110, -4.9847, 12.1807



187.8890, 4.9847, -12.1807

Split Complementary

Split-complementary colors differ from the complementary color scheme. The scheme consists of three colors, the original color and two neighbors of the complement color.



182.0680, 6.8685, -9.7066



184.1110, -4.9847, 12.1807



180.4930, 2.2220, -12.7104

Square

The Square scheme is like the rectangle color scheme, but the four colors are evenly spaced on the color wheel.



184.1110, -4.9847, 12.1807



181.4250, -4.6465, -3.0037



181.2910, 5.2795, -13.4102



183.6890, 5.0833, 2.9037

Rectangle

The Rectangle color scheme consists of four colors that form a rectangle on the color wheel.



184.1110, -4.9847, 12.1807



182.6110, -6.7102, 5.6032



181.2910, 5.2795, -13.4102



182.5030, 7.1470, -5.7031

Sweetspot

The Sweet Spot groups the original color and five complimentary colors.



184.1110, -4.9847, 12.1807



249.1640, -2.0529, 5.1182



183.3420, 4.7614, 12.8551



123.6800, -1.3212, 3.7886



0.0000, 0.0000, 0.0000



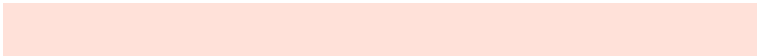
128.0000, 0.0000, 0.0000

Same Dimension

The Same Dimension uses a secret algorithm to generate beautiful new colors.



184.1110, -4.9847, 12.1807



233.0580, -7.9166, 19.2431



191.1550, -8.4574, 6.0031



93.8650, -1.9054, 4.5034



68.6950, -33.8666, 82.7055



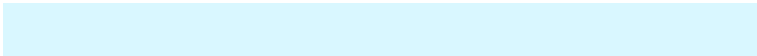
14.8730, -7.3324, 18.5284

Inverse Universe

The Inverse Universe completely reimagines the original color for something new.



187.8890, 4.9847, -12.1807



238.9420, 7.9166, -19.2431



180.8450, 8.4574, -6.0031



95.1350, 1.9054, -4.5034



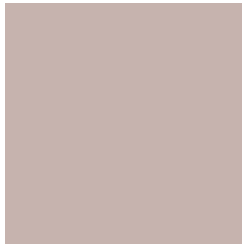
94.3050, 33.8666, -82.7055



20.5400, 7.6218, -18.0136

Previews

White Background



This preview shows how the YUV color 184.1110, -4.9847, 12.1807 looks on a white background.

Color Contrast Check

Large Text (above 18pt) WCAG AA × Fail

Any Text WCAG AA × Fail

Large Text (above 18pt) WCAG AAA × Fail

Any Text WCAG AAA × Fail

Black Background



This preview shows how the YUV color 184.1110, -4.9847, 12.1807 looks on a black background.

Color Contrast Check

Large Text (above 18pt) WCAG AA ✓ Pass

Any Text WCAG AA ✓ Pass

Large Text (above 18pt) WCAG AAA ✓ Pass

Any Text WCAG AAA ✓ Pass

If you want to check with other color combinations, try the [Color Contrast Checker](#).

YUV 184.1110, -4.9847, 12.1807

Background



This preview shows how black text looks on a background with the YUV color 184.1110, -4.9847, 12.1807.



This preview shows how white text looks on a background with the YUV color 184.1110, -4.9847,

Color Blindness Simulation

Color vision deficiency is a very complex topic, and I could not describe the different causes any better than Wikipedia does, so if you want to learn more, you should check out their [article about color blindness](#).

Dichromacy



Original Color

184.1110, -4.9847, 12.1807

Protanopia

183.1100, -3.5052, 4.2885

Deuteranopia

184.7310, -5.2904, 16.8989



Tritanopia

185.3590, 2.2880, 12.8402

Trichromacy



Original Color

184.1110, -4.9847, 12.1807

Protanomaly

183.6050, -4.2423, 7.3624

Deuteranomaly

184.7200, -5.2850, 15.1546

Tritanomaly

184.9630, -0.4748, 12.3104

Monochromacy



Original Color

184.1110, -4.9847, 12.1807

Achromatopsia

184.0000, 0.0000, 0.0000

Achromatomaly

183.8650, -1.9054, 4.5034

CSS Examples

Text

The CSS property to change the color of the text to YUV 184.1110, -4.9847, 12.1807 is called "color". The color property can be set on classes, ids or directly on the HTML element.

This example shows how text in the color `rgb(198, 179, 174)` looks like.

```
.text, #text, p{  
    color:rgb(198, 179, 174)  
}
```

If you want to add a text shadow in that color use the text-shadow property, you can generate a text shadow directly with our [CSS Text Shadow Generator](#).

Here you see how black text with a 4 pixel rgb(198, 179, 174) colored shadow looks like.

```
.shadow{ text-shadow: 4px 4px 2px rgb(198, 179, 174) }
```

Border

The CSS property to change the border of an element to YUV 184.1110, -4.9847, 12.1807 is called "border". The border property can be set on classes, ids or directly on the HTML element.

This example shows the color as border, it can be applied via the CSS property "border" or "border-color".

```
.border, #border, table{ border:4px solid rgb(198, 179, 174) }
```


If only the border color should be changed use the property `border-color`.

```
.border{ border-color:rgb(198, 179, 174) }
```

If you want to add a box shadow in that color use:

Here you see how a box with a 4 pixel `rgb(198, 179, 174)` colored shadow looks like.

```
.boxshadow{ -moz-box-shadow:4px 4px 4px  
4px rgb(198, 179, 174); -webkit-box-  
shadow:4px 4px 4px 4px rgb(198, 179, 174);  
box-shadow:4px 4px 4px 4px rgb(198, 179,  
174) }
```

Background

The CSS property to change the background color of an element to YUV 184.1110, -4.9847, 12.1807 is called "background". The background property can be set on classes, ids or directly on the HTML element.

```
.background, #background, body{  
background: rgb(198, 179, 174) }
```

If only the background color should be changed can be used:

```
.background{ background-color: rgb(198,  
179, 174) }
```

This example shows the color as background, it is applied via the CSS property "background".

To optimize and compress your CSS code, you can use our [online CSS compressor and optimizer](#) based on csstidy. If you want to create a linear or radial gradient as background or border, check our [CSS Gradient Generator](#).

Hey! You found this booklet interesting? Support Converting Colors with the new Membership Option!

The pro membership hides all ads, plus gives you double the colors in the color bucket, and more awesome pro features!

[Learn more, Memberships starting at \\$2.50/m!](#)

**Follow me
on Twitter!**

@ConvertingColor