

Converting Colors

YUV(184.3370, -14.4631,
18.9985)

Have a look what the booklet for
YUV(184.3370, -14.4631, 18.9985)
contains.

YUV(184.3370, -14.4631, 18.9985)	3
<i>Conversions</i>	4
<i>Details</i>	6
<i>Harmonies</i>	12
<i>Previews</i>	24
<i>Color Blindness Simulation</i>	28
<i>CSS Examples</i>	31

Color

**YUV(184.3370, -14.4631,
18.9985)**

Conversions

Conversions Part 1

Format	Color
Hex	CEB39B
RGB	206, 179, 155
RGB Percent	81%, 70%, 61%
CMY	0.1922, 0.2980, 0.3922
CMYK	0.00, 0.13, 0.25, 0.19
HSL	28°, 34%, 71%
HSV	28°, 25%, 81%
XYZ	47.4901, 47.7286, 37.7199
YIQ	184.3370, 23.7960, -1.7400

Conversions

Conversions Part 2

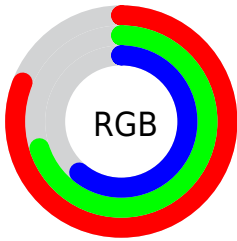
Format	Color
R_{YB}	206, 200, 155
Decimal	13546395
CIE _{Lab}	74.65, 6.01, 15.83
CIE _{LCh}	75, 16.937, 69.216
Yxy	47.7286, 0.3572, 0.3590
Android (android.graphics.Color)	4291736475 (0xFFCEB39B)
YUV	184.3370, -14.4631, 18.9985
Hunter-Lab	69.0859, 1.8018, 15.9886

Details

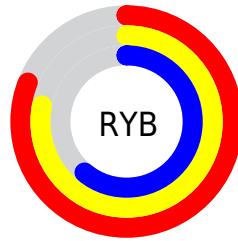
The YUV color $184.3370, -14.4631, 18.9985$ is a light color, and the websafe version is hex $CC9999$. A complement of this color would be $176.6630, 14.4631, -18.9985$, and the grayscale version is $184.0000, 0.0000, 0.0000$.

A 20% lighter version of the original color is $238.0160, -14.3049, 14.8950$, and $130.9670, -13.2947, 17.5689$ is the 20% darker color. If you saturate the color by 10%, you get $175.4860, -20.4526, 26.7608$, and if you desaturate by 10%, it is $193.1880, -8.4737, 11.2361$.

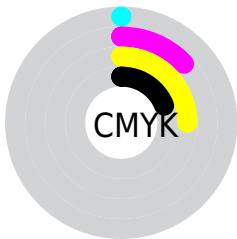
Distribution



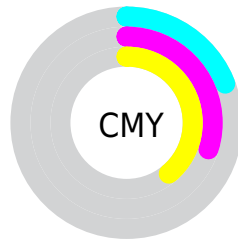
- Red (81%)
- Green (70%)
- Blue (61%)



- Red (81%)
- Yellow (78%)
- Blue (61%)



- Cyan (0%)
- Magenta (13%)
- Yellow (25%)
- Black (19%)



- Cyan (19%)
- Magenta (30%)
- Yellow (39%)

Brightness & Saturation Gradients

These gradients show how the YUV color 184.3370, -14.4631, 18.9985 changes by changing the brightness by 10 percent. The first figure shows a shift by +10% for each color and the second figure -10%.

Similar to the brightness gradients but the following saturation gradients show a change of the YUV color 184.3370, -14.4631, 18.9985 by changing the saturation by 10% instead.

■ 184.3370,
-14.4631, 18.9985

■ 184.3370,
-14.4631, 18.9985

255.0000, 0.0000,
0.0000

■ 157.1520,
-13.8789, 18.2837

■ 238.0160,
-14.3049, 14.8950

■ 130.9670,
-13.2947, 17.5689

■ 253.0620, -7.4256,
1.6996

■ 105.7820,
-12.7105, 16.8542

■ 81.2980, -11.9789,
15.5247

■ 58.7000, -11.6841,
14.2951

■ 36.2160, -10.9525,
12.9656

■ 15.4270, -7.6055,

12.7805

■ 0.0000, 0.0000,
0.0000

■ 184.3370,
-14.4631, 18.9985

■ 184.3370,
-14.4631, 18.9985

■ 175.4860,
-20.4526, 26.7608

■ 193.1880, -8.4737,
11.2361

■ 166.7490,
-26.0053, 34.4231

■ 201.9250, -2.9210,
3.5738

■ 157.8980,
-31.9947, 42.1855

■ 210.7760, 3.0684,
-4.1886

■ 149.1610,
-37.5474, 49.8478

■ 219.5130, 8.6211,
-11.8509

■ 140.3100,
-43.5368, 57.6101

■ 228.0220, 13.3002,
-19.3133

■ 132.0460,
-49.8157, 64.8577

■ 233.8920, 10.4062,
-24.4613

■ 123.3090,
-55.3683, 72.5200

■ 240.3490, 7.2229,
-30.1241

■ 118.5330,
-58.4368, 76.7086

Harmonies

Analogous

The Analogous color harmony consists of three colors that are next to each other on the color wheel.



185.8200, -10.2643, 25.5909



184.3370, -14.4631, 18.9985



182.5590, -14.5726, 7.4028

Triad

The Triadic color harmony groups three colors that are evenly spaced from another and form a triangle on the color wheel.



184.3370, -14.4631, 18.9985



178.0780, 4.8915, -29.0094



185.9050, 10.8928, 6.2223

Complementary

The Complementary color scheme is a pair of colors which are on the opposite of each other on the color wheel.



184.3370, -14.4631, 18.9985



176.6630, 14.4631, -18.9985

Split Complementary

Split-complementary colors differ from the complementary color scheme. The scheme consists of three colors, the original color and two neighbors of the complement color.



183.5440, 15.0148, -9.2471



184.3370, -14.4631, 18.9985



178.9020, 11.8803, -30.6091

Square

The Square scheme is like the rectangle color scheme, but the four colors are evenly spaced on the color wheel.



184.3370, -14.4631, 18.9985



178.9560, -3.4293, -20.1324



180.5700, 15.4950, -23.3019



186.5600, 4.1609, 18.8029

Rectangle

The Rectangle color scheme consists of four colors that form a rectangle on the color wheel.



184.3370, -14.4631, 18.9985



181.0740, -12.3615, -1.8189



180.5700, 15.4950, -23.3019



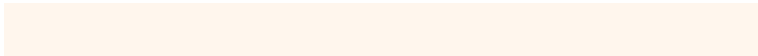
185.3280, 12.6563, 0.5893

Sweetspot

The Sweet Spot groups the original color and five complimentary colors.



184.3370, -14.4631, 18.9985



247.6650, -5.2578, 6.4328



173.3270, 4.2758, 28.6542



123.2240, -3.0684, 4.1886



0.0000, 0.0000, 0.0000



128.0000, 0.0000, 0.0000

Same Dimension

The Same Dimension uses a secret algorithm to generate beautiful new colors.



184.3370, -14.4631, 18.9985



222.8560, -21.6210, 28.1903



199.0120, -21.6979, 6.1285



97.9250, -2.9210, 3.5738



95.4200, -47.0421, 61.8987



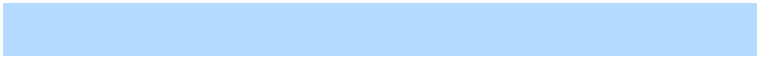
21.9280, -10.8105, 14.0951

Inverse Universe

The Inverse Universe completely reimagines the original color for something new.



176.6630, 14.4631, -18.9985



211.1440, 21.6210, -28.1903



161.9880, 21.6979, -6.1285



96.0750, 2.9210, -3.5738



70.5800, 47.0421, -61.8987



16.0720, 10.8105, -14.0951

Previews

White Background



This preview shows how the YUV color 184.3370, -14.4631, 18.9985 looks on a white background.

Color Contrast Check

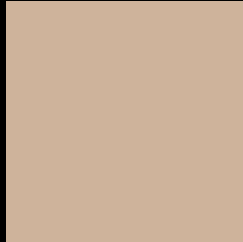
Large Text (above 18pt) WCAG AA × Fail

Any Text WCAG AA × Fail

Large Text (above 18pt) WCAG AAA × Fail

Any Text WCAG AAA × Fail

Black Background



This preview shows how the YUV color 184.3370, -14.4631, 18.9985 looks on a black background.

Color Contrast Check

Large Text (above 18pt) WCAG AA ✓ Pass

Any Text WCAG AA ✓ Pass

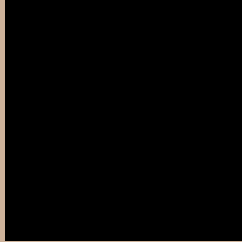
Large Text (above 18pt) WCAG AAA ✓ Pass

Any Text WCAG AAA ✓ Pass

If you want to check with other color combinations, try the [Color Contrast Checker](#).

YUV 184.3370, -14.4631, 18.9985

Background



This preview shows how black text looks on a background with the YUV color 184.3370, -14.4631, 18.9985.



This preview shows how white text looks on a background with the YUV color 184.3370, -14.4631, 18.9985.

Color Blindness Simulation

Color vision deficiency is a very complex topic, and I could not describe the different causes any better than Wikipedia does, so if you want to learn more, you should check out their [article about color blindness](#).

Dichromacy



Original Color

184.3370, -14.4631, 18.9985

Protanopia

183.0260, -12.8308, 8.7472

Deuteranopia

184.9570, -14.7688, 23.7167



Tritanopia

186.3600, 0.8085, 20.7323

Trichromacy



Original Color

184.3370, -14.4631, 18.9985

Protanomaly

183.8200, -13.7153, 12.4359

Deuteranomaly

184.9460, -14.7634, 21.9724

Tritanomaly

185.8670, -4.8644, 20.2876

Monochromacy



Original Color

184.3370, -14.4631, 18.9985

Achromatopsia

184.0000, 0.0000, 0.0000

Achromatomaly

183.9640, -5.4053, 7.0476

CSS Examples

Text

The CSS property to change the color of the text to YUV 184.3370, -14.4631, 18.9985 is called "color". The color property can be set on classes, ids or directly on the HTML element.

This example shows how text in the color `rgb(206, 179, 155)` looks like.

```
.text, #text, p{  
    color:rgb(206, 179, 155)  
}
```

If you want to add a text shadow in that color use the text-shadow property, you can generate a text shadow directly with our [CSS Text Shadow Generator](#).

Here you see how black text with a 4 pixel rgb(206, 179, 155) colored shadow looks like.

```
.shadow{ text-shadow: 4px 4px 2px rgb(206, 179, 155) }
```

Border

The CSS property to change the border of an element to YUV 184.3370, -14.4631, 18.9985 is called "border".

The border property can be set on classes, ids or directly on the HTML element.

This example shows the color as border, it can be applied via the CSS property "border" or "border-color".

```
.border, #border, table{ border:4px solid rgb(206, 179, 155) }
```


If only the border color should be changed use the property `border-color`.

```
.border{ border-color:rgb(206, 179, 155) }
```

If you want to add a box shadow in that color use:

Here you see how a box with a 4 pixel `rgb(206, 179, 155)` colored shadow looks like.

```
.boxshadow{ -moz-box-shadow:4px 4px 4px  
4px rgb(206, 179, 155); -webkit-box-  
shadow:4px 4px 4px 4px rgb(206, 179, 155);  
box-shadow:4px 4px 4px 4px rgb(206, 179,  
155) }
```

Background

The CSS property to change the background color of an element to YUV 184.3370, -14.4631, 18.9985 is called "background". The background property can be set on classes, ids or directly on the HTML element.

```
.background, #background, body{  
background: rgb(206, 179, 155) }
```

If only the background color should be changed can be used:

```
.background{ background-color: rgb(206,  
179, 155) }
```

This example shows the color as background, it is applied via the CSS property "background".

To optimize and compress your CSS code, you can use our [online CSS compressor and optimizer](#) based on csstidy. If you want to create a linear or radial gradient as background or border, check our [CSS Gradient Generator](#).

Hey! You found this booklet interesting? Support Converting Colors with the new Membership Option!

The pro membership hides all ads, plus gives you double the colors in the color bucket, and more awesome pro features!

[Learn more, Memberships starting at \\$2.50/m!](#)

**Follow me
on Twitter!**

@ConvertingColor