

Converting Colors

YUV(184.3620, -5.6015,
23.3615)

Have a look what the booklet for
YUV(184.3620, -5.6015, 23.3615)
contains.

YUV(184.3620, -5.6015, 23.3615)	3
<i>Conversions</i>	4
<i>Details</i>	6
<i>Harmonies</i>	12
<i>Previews</i>	24
<i>Color Blindness Simulation</i>	28
<i>CSS Examples</i>	31

Color

**YUV(184.3620, -5.6015,
23.3615)**

Conversions

Conversions Part 1

Format	Color
Hex	D3ADAD
RGB	211, 173, 173
RGB Percent	83%, 68%, 68%
CMY	0.1725, 0.3216, 0.3216
CMYK	0.00, 0.18, 0.18, 0.17
HSL	0°, 30%, 75%
HSV	0°, 18%, 83%
XYZ	49.3504, 46.7532, 45.9584
YIQ	184.3620, 22.6480, 8.0560

Conversions

Conversions Part 2

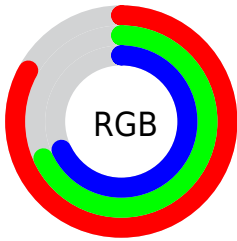
Format	Color
R _{YB}	211, 173, 173
Decimal	13872557
CIE _{Lab}	74.03, 13.80, 5.20
CIE _{LCh}	74, 14.752, 20.646
Y _{xy}	46.7532, 0.3474, 0.3291
Android (android.graphics.Color)	4292062637 (0xFFD3ADAD)
Y _{UV}	184.3620, -5.6015, 23.3615
Hunter-Lab	68.3763, 9.1733, 8.0123

Details

The YUV color $184.3620, -5.6015, 23.3615$ is a light color, and the websafe version is hex $CC9999$. A complement of this color would be $199.6380, 5.6015, -23.3615$, and the grayscale version is $184.0000, 0.0000, 0.0000$.

A 20% lighter version of the original color is $236.6600, -4.2694, 16.0842$, and $131.4650, -5.1592, 21.5172$ is the 20% darker color. If you saturate the color by 10%, you get $169.6410, -8.6970, 36.2718$, and if you desaturate by 10%, it is $199.0830, -2.5059, 10.4512$.

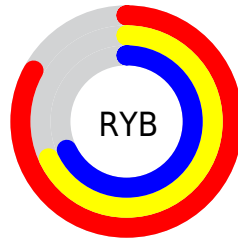
Distribution



Red (83%)

Green (68%)

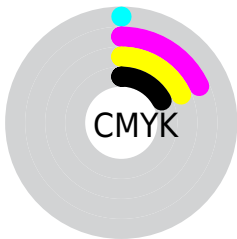
Blue (68%)



Red (83%)

Yellow (68%)

Blue (68%)

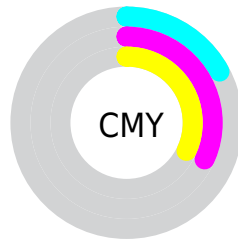


Cyan (0%)

Magenta (18%)

Yellow (18%)

Black (17%)



Cyan (17%)


Magenta (32%)


Yellow (32%)

Brightness & Saturation Gradients

These gradients show how the YUV color 184.3620, -5.6015, 23.3615 changes by changing the brightness by 10 percent. The first figure shows a shift by +10% for each color and the second figure -10%.

Similar to the brightness gradients but the following saturation gradients show a change of the YUV color 184.3620, -5.6015, 23.3615 by changing the saturation by 10% instead.

 184.3620, -5.6015,
23.3615


 184.3620, -5.6015,
23.3615


255.0000, 0.0000,
0.0000


 157.0630, -5.4541,
22.7467


 236.6600, -4.2694,
16.0842

 131.4650, -5.1592,
21.5172

 106.1660, -5.0118,
20.9024

 81.5680, -4.7170,
19.6729

 58.0840, -3.9854,
18.3433

 36.4860, -3.6906,
17.1138

 12.5680, -4.7170,

19.6729

■ 0.0000, 0.0000,
0.0000

■ 184.3620, -5.6015,
23.3615

■ 184.3620, -5.6015,
23.3615

■ 169.6410, -8.6970,
36.2718

■ 199.0830, -2.5059,
10.4512

■ 154.9200,
-11.7926, 49.1822

■ 213.8040, 0.5896,
-2.4591

■ 140.1990,
-14.8881, 62.0925

■ 228.5250, 3.6852,
-15.3694

■ 125.4780,
-17.9837, 75.0028

■ 241.8440, 6.4859,
-27.0502

■ 110.7570,
-21.0792, 87.9131

■ 95.3350, -24.3222,
101.4382

■ 80.6140, -27.4177,
114.3485

■ 65.8930, -30.5132,
127.2588

■ 63.0890, -31.1029,
129.7179

Harmonies

Analogous

The Analogous color harmony consists of three colors that are next to each other on the color wheel.



184.7620, 1.1033, 19.5027



184.3620, -5.6015, 23.3615



183.0860, -10.3954, 20.9726

Triad

The Triadic color harmony groups three colors that are evenly spaced from another and form a triangle on the color wheel.



184.3620, -5.6015, 23.3615



179.0990, -6.9508, -10.6108



180.1580, 13.7261, -15.9246

Complementary

The Complementary color scheme is a pair of colors which are on the opposite of each other on the color wheel.



184.3620, -5.6015, 23.3615



199.6380, 5.6015, -23.3615

Split Complementary

Split-complementary colors differ from the complementary color scheme. The scheme consists of three colors, the original color and two neighbors of the complement color.



178.2340, 11.7166, -24.7612



184.3620, -5.6015, 23.3615



177.7540, -0.3717, -20.8323

Square

The Square scheme is like the rectangle color scheme, but the four colors are evenly spaced on the color wheel.



184.3620, -5.6015, 23.3615



180.6230, -11.6461, 2.0846



177.2570, 6.7753, -26.5354



182.7790, 11.9410, -3.3142

Rectangle

The Rectangle color scheme consists of four colors that form a rectangle on the color wheel.



184.3620, -5.6015, 23.3615



182.4830, -12.5631, 16.2394



177.2570, 6.7753, -26.5354



179.7230, 13.4476, -19.9281

Sweetspot

The Sweet Spot groups the original color and five complimentary colors.



184.3620, -5.6015, 23.3615



245.8870, -1.9163, 7.9921



188.6940, 10.9969, 19.5624



122.3920, -1.1793, 4.9182



0.0000, 0.0000, 0.0000



128.0000, 0.0000, 0.0000

Same Dimension

The Same Dimension uses a secret algorithm to generate beautiful new colors.



184.3620, -5.6015, 23.3615



215.7440, -8.2548, 34.4275



195.5150, -11.0999, 13.5803



97.2890, -1.6215, 6.7625



50.2320, -24.7644, 103.2825



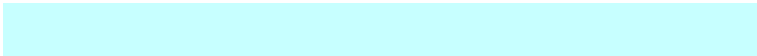
12.2590, -6.0437, 25.2059

Inverse Universe

The Inverse Universe completely reimagines the original color for something new.



199.6380, 5.6015, -23.3615



238.2560, 8.2548, -34.4275



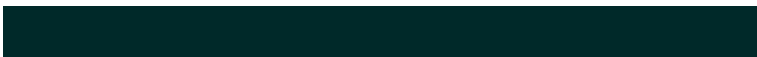
188.4850, 11.0999, -13.5803



101.7110, 1.6215, -6.7625



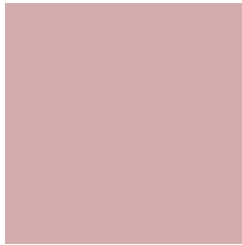
117.7680, 24.7644, -103.2825



28.7410, 6.0437, -25.2059

Previews

White Background



This preview shows how the YUV color 184.3620, -5.6015, 23.3615 looks on a white background.

Color Contrast Check

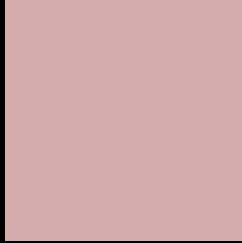
Large Text (above 18pt) WCAG AA × Fail

Any Text WCAG AA × Fail

Large Text (above 18pt) WCAG AAA × Fail

Any Text WCAG AAA × Fail

Black Background



This preview shows how the YUV color 184.3620, -5.6015, 23.3615 looks on a black background.

Color Contrast Check

Large Text (above 18pt) WCAG AA ✓ Pass

Any Text WCAG AA ✓ Pass

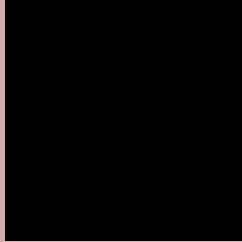
Large Text (above 18pt) WCAG AAA ✓ Pass

Any Text WCAG AAA ✓ Pass

If you want to check with other color combinations, try the [Color Contrast Checker](#).

YUV 184.3620, -5.6015, 23.3615

Background



This preview shows how black text looks on a background with the YUV color 184.3620, -5.6015, 23.3615.



This preview shows how white text looks on a background with the YUV color 184.3620, -5.6015,

23.3615.

Color Blindness Simulation

Color vision deficiency is a very complex topic, and I could not describe the different causes any better than Wikipedia does, so if you want to learn more, you should check out their [article about color blindness](#).

Dichromacy



Original Color

184.3620, -5.6015, 23.3615

Protanopia

182.1530, -2.0474, 3.3738

Deuteranopia

183.6170, -5.7272, 16.9989



Tritanopia

184.8550, 0.0715, 23.8062

Trichromacy



Original Color

184.3620, -5.6015, 23.3615

Protanomaly

182.8550, -3.3795, 10.6512

Deuteranomaly

183.9270, -5.8800, 19.3580

Tritanomaly

184.9860, -1.9651, 23.6913

Monochromacy



Original Color

184.3620, -5.6015, 23.3615

Achromatopsia

184.0000, 0.0000, 0.0000

Achromatomaly

184.1860, -2.0637, 8.6069

CSS Examples

Text

The CSS property to change the color of the text to YUV 184.3620, -5.6015, 23.3615 is called "color". The color property can be set on classes, ids or directly on the HTML element.

This example shows how text in the color `rgb(211, 173, 173)` looks like.

```
.text, #text, p{  
    color:rgb(211, 173, 173)  
}
```

If you want to add a text shadow in that color use the text-shadow property, you can generate a text shadow directly with our [CSS Text Shadow Generator](#).

Here you see how black text with a 4 pixel rgb(211, 173, 173) colored shadow looks like.

```
.shadow{ text-shadow: 4px 4px 2px rgb(211, 173, 173) }
```

Border

The CSS property to change the border of an element to YUV 184.3620, -5.6015, 23.3615 is called "border". The border property can be set on classes, ids or directly on the HTML element.

This example shows the color as border, it can be applied via the CSS property "border" or "border-color".

```
.border, #border, table{ border:4px solid rgb(211, 173, 173) }
```


If only the border color should be changed use the property `border-color`.

```
.border{ border-color:rgb(211, 173, 173) }
```

If you want to add a box shadow in that color use:

Here you see how a box with a 4 pixel `rgb(211, 173, 173)` colored shadow looks like.

```
.boxshadow{ -moz-box-shadow:4px 4px 4px  
4px rgb(211, 173, 173); -webkit-box-  
shadow:4px 4px 4px 4px rgb(211, 173, 173);  
box-shadow:4px 4px 4px 4px rgb(211, 173,  
173) }
```

Background

The CSS property to change the background color of an element to YUV 184.3620, -5.6015, 23.3615 is called "background". The background property can be set on classes, ids or directly on the HTML element.

```
.background, #background, body{  
background: rgb(211, 173, 173) }
```

If only the background color should be changed can be used:

```
.background{ background-color: rgb(211,  
173, 173) }
```

This example shows the color as background, it is applied via the CSS property "background".

To optimize and compress your CSS code, you can use our [online CSS compressor and optimizer](#) based on csstidy. If you want to create a linear or radial gradient as background or border, check our [CSS Gradient Generator](#).

Hey! You found this booklet interesting? Support Converting Colors with the new Membership Option!

The pro membership hides all ads, plus gives you double the colors in the color bucket, and more awesome pro features!

[Learn more, Memberships starting at \\$2.50/m!](#)

**Follow me
on Twitter!**

@ConvertingColor