

Converting Colors

YUV(184.8570, -6.3385,
26.4354)

Have a look what the booklet for
YUV(184.8570, -6.3385, 26.4354)
contains.

YUV(184.8570, -6.3385, 26.4354)	3
<i>Conversions</i>	4
<i>Details</i>	6
<i>Harmonies</i>	12
<i>Previews</i>	24
<i>Color Blindness Simulation</i>	28
<i>CSS Examples</i>	31

Color

**YUV(184.8570, -6.3385,
26.4354)**

Conversions

Conversions Part 1

Format	Color
Hex	D7ACAC
RGB	215, 172, 172
RGB Percent	84%, 67%, 67%
CMY	0.1569, 0.3255, 0.3255
CMYK	0.00, 0.20, 0.20, 0.16
HSL	0°, 35%, 76%
HSV	0°, 20%, 84%
XYZ	50.2232, 46.9307, 45.4412
YIQ	184.8570, 25.6280, 9.1160

Conversions

Conversions Part 2

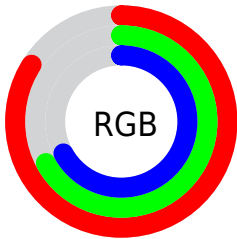
Format	Color
R _Y B	215, 172, 172
Decimal	14134444
CIE Lab	74.15, 15.67, 5.96
CIE LCh	74, 16.765, 20.833
Yxy	46.9307, 0.3522, 0.3291
Android (android.graphics.Color)	4292324524 (0xFFD7ACAC)
YUV	184.8570, -6.3385, 26.4354
Hunter-Lab	68.5060, 10.9769, 8.6261

Details

The YUV color $184.8570, -6.3385, 26.4354$ is a light color, and the websafe version is hex $CC9999$. A complement of this color would be $202.1430, 6.3385, -26.4354$, and the grayscale version is $185.0000, 0.0000, 0.0000$.

A 20% lighter version of the original color is $235.3720, -4.1274, 17.2138$, and $131.9600, -5.8963, 24.5911$ is the 20% darker color. If you saturate the color by 10%, you get $170.1360, -9.4340, 39.3457$, and if you desaturate by 10%, it is $200.2790, -3.0955, 12.9103$.

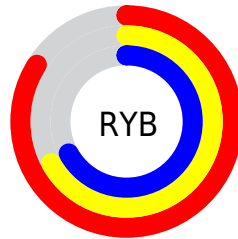
Distribution



Red (84%)

Green (67%)

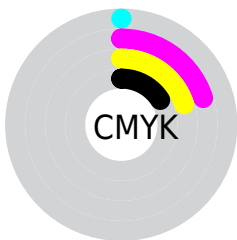
Blue (67%)



Red (84%)

Yellow (67%)

Blue (67%)

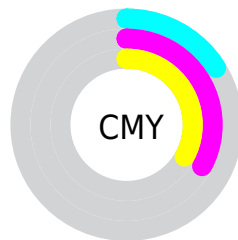


Cyan (0%)

Magenta (20%)

Yellow (20%)

Black (16%)



Cyan (16%)

Magenta (33%)

Yellow (33%)

Brightness & Saturation Gradients

These gradients show how the YUV color 184.8570, -6.3385, 26.4354 changes by changing the brightness by 10 percent. The first figure shows a shift by +10% for each color and the second figure -10%.

Similar to the brightness gradients but the following saturation gradients show a change of the YUV color 184.8570, -6.3385, 26.4354 by changing the saturation by 10% instead.

■ 184.8570, -6.3385,
26.4354

■ 184.8570, -6.3385,
26.4354

255.0000, 0.0000,
0.0000

■ 157.5580, -6.1911,
25.8206

■ 235.3720, -4.1274,
17.2138

■ 131.9600, -5.8963,
24.5911

■ 106.3620, -5.6015,
23.3615

■ 81.7640, -5.3067,
22.1320

■ 58.2800, -4.5750,
20.8024

■ 36.3830, -4.1328,
18.9581

■ 12.6500, -5.7435,

22.2320

0.0000, 0.0000,
0.0000

184.8570, -6.3385,
26.4354

184.8570, -6.3385,
26.4354

170.1360, -9.4340,
39.3457

200.2790, -3.0955,
12.9103

154.7140,
-12.6770, 52.8708

215.0000, 0.0000,
0.0000

139.9930,
-15.7725, 65.7811

230.4220, 3.2430,
-13.5251

124.5710,
-19.0155, 79.3062

243.0400, 5.8963,
-24.5911

109.8500,
-22.1110, 92.2166

■ 94.4280, -25.3540,
105.7416

■ 79.0060, -28.5970,
119.2667

■ 64.2850, -31.6925,
132.1771

Harmonies

Analogous

The Analogous color harmony consists of three colors that are next to each other on the color wheel.



185.4850, 1.2399, 22.3767



184.8570, -6.3385, 26.4354



183.9400, -12.2954, 23.7316

Triad

The Triadic color harmony groups three colors that are evenly spaced from another and form a triangle on the color wheel.



184.8570, -6.3385, 26.4354



178.8600, -7.8190, -12.1552



180.6030, 15.4787, -18.0688

Complementary

The Complementary color scheme is a pair of colors which are on the opposite of each other on the color wheel.



184.8570, -6.3385, 26.4354



202.1430, 6.3385, -26.4354

Split Complementary

Split-complementary colors differ from the complementary color scheme. The scheme consists of three colors, the original color and two neighbors of the complement color.



177.7820, 13.9115, -28.7498



184.8570, -6.3385, 26.4354



177.1450, -0.0715, -23.8062

Square

The Square scheme is like the rectangle color scheme, but the four colors are evenly spaced on the color wheel.



184.8570, -6.3385, 26.4354



180.7540, -13.6827, 1.9697



176.5770, 8.0965, -30.3240



183.2350, 13.6881, -3.7141

Rectangle

The Rectangle color scheme consists of four colors that form a rectangle on the color wheel.



184.8570, -6.3385, 26.4354



183.0380, -14.3157, 18.3837



176.5770, 8.0965, -30.3240



179.8690, 15.3476, -22.6871

Sweetspot

The Sweet Spot groups the original color and five complimentary colors.



184.8570, -6.3385, 26.4354



244.4850, -2.2111, 9.2217



189.7590, 12.4438, 22.1364



121.6910, -1.3267, 5.5330



0.0000, 0.0000, 0.0000



128.0000, 0.0000, 0.0000

Same Dimension

The Same Dimension uses a secret algorithm to generate beautiful new colors.



184.8570, -6.3385, 26.4354



212.2390, -8.9918, 37.5014



197.7710, -12.7051, 15.1098



99.2890, -1.6215, 6.7625



51.1290, -25.2066, 105.1269



12.8570, -6.3385, 26.4354

Inverse Universe

The Inverse Universe completely reimagines the original color for something new.



202.1430, 6.3385, -26.4354



236.7610, 8.9918, -37.5014



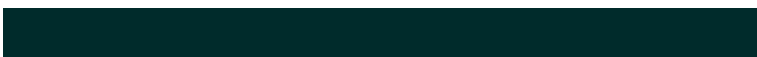
189.8160, 12.4157, -15.6246



103.7110, 1.6215, -6.7625



119.8710, 25.2066, -105.1269



30.1430, 6.3385, -26.4354

Previews

White Background



This preview shows how the YUV color 184.8570, -6.3385, 26.4354 looks on a white background.

Color Contrast Check

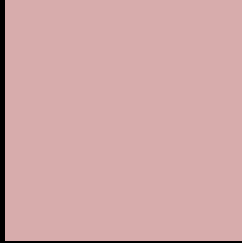
Large Text (above 18pt) WCAG AA × Fail

Any Text WCAG AA × Fail

Large Text (above 18pt) WCAG AAA × Fail

Any Text WCAG AAA × Fail

Black Background



This preview shows how the YUV color 184.8570, -6.3385, 26.4354 looks on a black background.

Color Contrast Check

Large Text (above 18pt) WCAG AA ✓ Pass

Any Text WCAG AA ✓ Pass

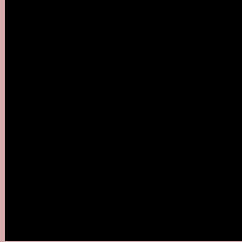
Large Text (above 18pt) WCAG AAA ✓ Pass

Any Text WCAG AAA ✓ Pass

If you want to check with other color combinations, try the [Color Contrast Checker](#).

YUV 184.8570, -6.3385, 26.4354

Background



This preview shows how black text looks on a background with the YUV color 184.8570, -6.3385, 26.4354.



This preview shows how white text looks on a background with the YUV color 184.8570, -6.3385,

26.4354.

Color Blindness Simulation

Color vision deficiency is a very complex topic, and I could not describe the different causes any better than Wikipedia does, so if you want to learn more, you should check out their [article about color blindness](#).

Dichromacy



Original Color

184.8570, -6.3385, 26.4354

Protanopia

182.9250, -2.9210, 3.5738

Deuteranopia

183.8020, -6.3114, 17.7136



Tritanopia

185.2360, -1.1023, 26.9800

Trichromacy



Original Color

184.8570, -6.3385, 26.4354

Protanomaly

183.3390, -4.1111, 11.9807

Deuteranomaly

184.4110, -6.6116, 20.6876

Tritanomaly

185.3670, -3.1389, 26.8651

Monochromacy



Original Color

184.8570, -6.3385, 26.4354

Achromatopsia

185.0000, 0.0000, 0.0000

Achromatomaly

184.7840, -2.3585, 9.8364

CSS Examples

Text

The CSS property to change the color of the text to YUV 184.8570, -6.3385, 26.4354 is called "color". The color property can be set on classes, ids or directly on the HTML element.

This example shows how text in the color `rgb(215, 172, 172)` looks like.

```
.text, #text, p{  
    color:rgb(215, 172, 172)  
}
```

If you want to add a text shadow in that color use the text-shadow property, you can generate a text shadow directly with our [CSS Text Shadow Generator](#).

Here you see how black text with a 4 pixel rgb(215, 172, 172) colored shadow looks like.

```
.shadow{ text-shadow: 4px 4px 2px rgb(215, 172, 172) }
```

Border

The CSS property to change the border of an element to YUV 184.8570, -6.3385, 26.4354 is called "border". The border property can be set on classes, ids or directly on the HTML element.

This example shows the color as border, it can be applied via the CSS property "border" or "border-color".

```
.border, #border, table{ border:4px solid rgb(215, 172, 172) }
```


If only the border color should be changed use the property `border-color`.

```
.border{ border-color:rgb(215, 172, 172) }
```

If you want to add a box shadow in that color use:

Here you see how a box with a 4 pixel `rgb(215, 172, 172)` colored shadow looks like.

```
.boxshadow{ -moz-box-shadow:4px 4px 4px  
4px rgb(215, 172, 172); -webkit-box-  
shadow:4px 4px 4px 4px rgb(215, 172, 172);  
box-shadow:4px 4px 4px 4px rgb(215, 172,  
172) }
```

Background

The CSS property to change the background color of an element to YUV 184.8570, -6.3385, 26.4354 is called "background". The background property can be set on classes, ids or directly on the HTML element.

```
.background, #background, body{  
background: rgb(215, 172, 172) }
```

If only the background color should be changed can be used:

```
.background{ background-color: rgb(215,  
172, 172) }
```

This example shows the color as background, it is applied via the CSS property "background".

To optimize and compress your CSS code, you can use our [online CSS compressor and optimizer](#) based on csstidy. If you want to create a linear or radial gradient as background or border, check our [CSS Gradient Generator](#).

Hey! You found this booklet interesting? Support Converting Colors with the new Membership Option!

The pro membership hides all ads, plus gives you double the colors in the color bucket, and more awesome pro features!

[Learn more, Memberships starting at \\$2.50/m!](#)

**Follow me
on Twitter!**

@ConvertingColor