

Converting Colors

YUV(184.9980, -23.6630,
29.8198)

Have a look what the booklet for
YUV(184.9980, -23.6630, 29.8198)
contains.

YUV(184.9980, -23.6630, 29.8198)	3
<i>Conversions</i>	4
<i>Details</i>	6
<i>Harmonies</i>	12
<i>Previews</i>	24
<i>Color Blindness Simulation</i>	28
<i>CSS Examples</i>	31

Color

**YUV(184.9980, -23.6630,
29.8198)**

Conversions

Conversions Part 1

Format	Color
Hex	DBB189
RGB	219, 177, 137
RGB Percent	86%, 69%, 54%
CMY	0.1412, 0.3059, 0.4627
CMYK	0.00, 0.19, 0.37, 0.14
HSL	29°, 53%, 70%
HSV	29°, 37%, 86%
XYZ	49.4509, 48.3105, 30.3854
YIQ	184.9980, 37.8720, -3.5360

Conversions

Conversions Part 2

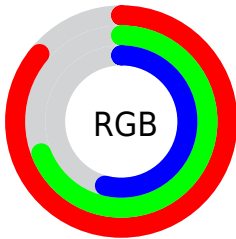
Format	Color
R _Y B	219, 215, 137
Decimal	14397833
CIE Lab	75.02, 9.82, 26.23
CIE LCh	75, 28.011, 69.488
Yxy	48.3105, 0.3859, 0.3770
Android (android.graphics.Color)	4292587913 (0xFFDDBB189)
YUV	184.9980, -23.6630, 29.8198
Hunter-Lab	69.5058, 5.3615, 22.7346

Details

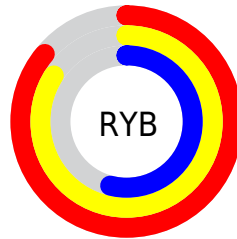
The YUV color **184.9980, -23.6630, 29.8198** is a light color, and the websafe version is hex **CC9966**. A complement of this color would be **171.0020, 23.6630, -29.8198**, and the grayscale version is **185.0000, 0.0000, 0.0000**.

A 20% lighter version of the original color is **234.7900, -21.5885, 17.7242**, and **131.4430, -21.9104, 27.6755** is the 20% darker color. If you saturate the color by 10%, you get **176.0330, -30.0893, 37.6821**, and if you desaturate by 10%, it is **193.9630, -17.2368, 21.9574**.

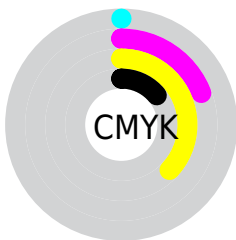
Distribution



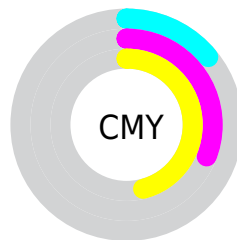
- Red (86%)
- Green (69%)
- Blue (54%)



- Red (86%)
- Yellow (84%)
- Blue (54%)



- Cyan (0%)
- Magenta (19%)
- Yellow (37%)
- Black (14%)



- Cyan (14%)
- Magenta (31%)
- Yellow (46%)

Brightness & Saturation Gradients

These gradients show how the YUV color 184.9980, -23.6630, 29.8198 changes by changing the brightness by 10 percent. The first figure shows a shift by +10% for each color and the second figure -10%.

Similar to the brightness gradients but the following saturation gradients show a change of the YUV color 184.9980, -23.6630, 29.8198 by changing the saturation by 10% instead.

■ 184.9980,
-23.6630, 29.8198

■ 184.9980,
-23.6630, 29.8198

255.0000, 0.0000,
0.0000

■ 157.5140,
-22.9314, 28.4902

■ 234.7900,
-21.5885, 17.7242

■ 131.4430,
-21.9104, 27.6755

■ 250.8960,
-15.7247, 3.5992

■ 106.2470,
-21.3208, 25.2164

■ 254.0880, -3.4944,
0.7998

■ 81.7630, -20.5892,
23.8868

■ 58.0940, -19.2733,
21.8426

■ 36.4250, -17.9575,
19.7983

■ 16.0360, -7.9057,

15.7544

■ 0.0000, 0.0000,
0.0000

■ 184.9980,
-23.6630, 29.8198

■ 184.9980,
-23.6630, 29.8198

■ 176.0330,
-30.0893, 37.6821

■ 193.9630,
-17.2368, 21.9574

■ 167.0680,
-36.5155, 45.5444

■ 202.9280,
-10.8105, 14.0951

■ 157.5160,
-42.6524, 53.9215

■ 212.4800, -4.6736,
5.7180

■ 148.5510,
-49.0786, 61.7838

■ 221.4450, 1.7526,
-2.1443

■ 139.5860,
-55.5049, 69.6461

■ 230.4100, 8.1789,
-10.0066

■ 130.7350,
-61.4944, 77.4084

■ 237.7790, 8.4900,
-16.4692

■ 128.2900,
-63.2470, 79.5527

■ 244.2360, 5.3067,
-22.1320

Harmonies

Analogous

The Analogous color harmony consists of three colors that are next to each other on the color wheel.



186.6110, -16.5702, 41.5602



184.9980, -23.6630, 29.8198



182.7630, -24.0402, 10.7318

Triad

The Triadic color harmony groups three colors that are evenly spaced from another and form a triangle on the color wheel.



184.9980, -23.6630, 29.8198



172.4880, 9.6194, -52.1710



187.8760, 18.3021, 9.7557

Complementary

The Complementary color scheme is a pair of colors which are on the opposite of each other on the color wheel.



184.9980, -23.6630, 29.8198



171.0020, 23.6630, -29.8198

Split Complementary

Split-complementary colors differ from the complementary color scheme. The scheme consists of three colors, the original color and two neighbors of the complement color.



183.8340, 25.2248, -17.3944



184.9980, -23.6630, 29.8198



172.6690, 21.8552, -56.7147

Square

The Square scheme is like the rectangle color scheme, but the four colors are evenly spaced on the color wheel.



184.9980, -23.6630, 29.8198



176.1130, -4.9857, -34.3021



177.7230, 26.7586, -42.7301



189.0330, 6.8857, 31.5431

Rectangle

The Rectangle color scheme consists of four colors that form a rectangle on the color wheel.



184.9980, -23.6630, 29.8198



180.5870, -20.5024, -4.0228



177.7230, 26.7586, -42.7301



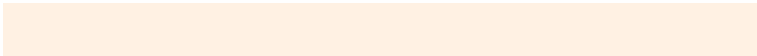
186.8040, 20.8026, 1.0489

Sweetspot

The Sweet Spot groups the original color and five complimentary colors.



184.9980, -23.6630, 29.8198



243.5900, -8.1789, 10.0066



166.3060, 6.2581, 46.2126



120.7790, -4.8210, 6.3328



0.0000, 0.0000, 0.0000



128.0000, 0.0000, 0.0000

Same Dimension

The Same Dimension uses a secret algorithm to generate beautiful new colors.



184.9980, -23.6630, 29.8198



207.2570, -33.1577, 41.8706



209.0650, -35.5280, 8.7130



105.2240, -3.0684, 4.1886



101.6220, -50.0996, 62.5985



26.6680, -13.1473, 16.9542

Inverse Universe

The Inverse Universe completely reimagines the original color for something new.



171.0020, 23.6630, -29.8198



187.7430, 33.1577, -41.8706



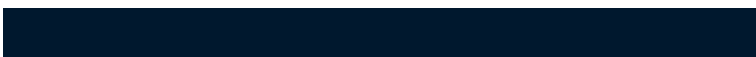
146.9350, 35.5280, -8.7130



103.1890, 3.3578, -3.6738



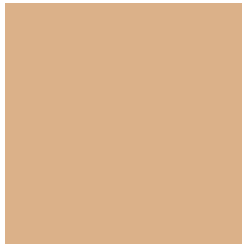
71.9650, 49.8103, -63.1133



19.3320, 13.1473, -16.9542

Previews

White Background



This preview shows how the YUV color 184.9980, -23.6630, 29.8198 looks on a white background.

Color Contrast Check

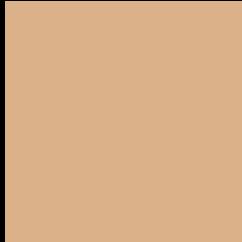
Large Text (above 18pt) WCAG AA × Fail

Any Text WCAG AA × Fail

Large Text (above 18pt) WCAG AAA × Fail

Any Text WCAG AAA × Fail

Black Background



This preview shows how the YUV color 184.9980, -23.6630, 29.8198 looks on a black background.

Color Contrast Check

Large Text (above 18pt) WCAG AA ✓ Pass

Any Text WCAG AA ✓ Pass

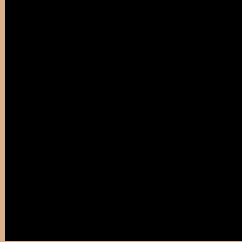
Large Text (above 18pt) WCAG AAA ✓ Pass

Any Text WCAG AAA ✓ Pass

If you want to check with other color combinations, try the [Color Contrast Checker](#).

YUV 184.9980, -23.6630, 29.8198

Background



This preview shows how black text looks on a background with the YUV color 184.9980, -23.6630, 29.8198.



This preview shows how white text looks on a background with the YUV color 184.9980, -23.6630,

Color Blindness Simulation

Color vision deficiency is a very complex topic, and I could not describe the different causes any better than Wikipedia does, so if you want to learn more, you should check out their [article about color blindness](#).

Dichromacy



Original Color

184.9980, -23.6630, 29.8198

Protanopia

183.7570, -21.5722, 12.4911

Deuteranopia

184.6990, -23.5156, 29.2050



Tritanopia

188.3290, -2.1342, 31.2835

Trichromacy



Original Color

184.9980, -23.6630, 29.8198

Protanomaly

184.2740, -22.3201, 19.0537

Deuteranomaly

184.6990, -23.5156, 29.2050

Tritanomaly

186.9670, -9.8437, 30.7239

Monochromacy



Original Color

184.9980, -23.6630, 29.8198

Achromatopsia

185.0000, 0.0000, 0.0000

Achromatomaly

184.8890, -8.3263, 10.6213

CSS Examples

Text

The CSS property to change the color of the text to YUV 184.9980, -23.6630, 29.8198 is called "color". The color property can be set on classes, ids or directly on the HTML element.

This example shows how text in the color `rgb(219, 177, 137)` looks like.

```
.text, #text, p{  
    color:rgb(219, 177, 137)  
}
```

If you want to add a text shadow in that color use the text-shadow property, you can generate a text shadow directly with our [CSS Text Shadow Generator](#).

Here you see how black text with a 4 pixel rgb(219, 177, 137) colored shadow looks like.

```
.shadow{ text-shadow: 4px 4px 2px rgb(219, 177, 137) }
```

Border

The CSS property to change the border of an element to YUV 184.9980, -23.6630, 29.8198 is called "border".

The border property can be set on classes, ids or directly on the HTML element.

This example shows the color as border, it can be applied via the CSS property "border" or "border-color".

```
.border, #border, table{ border:4px solid rgb(219, 177, 137) }
```


If only the border color should be changed use the property `border-color`.

```
.border{ border-color:rgb(219, 177, 137) }
```

If you want to add a box shadow in that color use:

Here you see how a box with a 4 pixel `rgb(219, 177, 137)` colored shadow looks like.

```
.boxshadow{ -moz-box-shadow:4px 4px 4px  
4px rgb(219, 177, 137); -webkit-box-  
shadow:4px 4px 4px 4px rgb(219, 177, 137);  
box-shadow:4px 4px 4px 4px rgb(219, 177,  
137) }
```

Background

The CSS property to change the background color of an element to YUV 184.9980, -23.6630, 29.8198 is called "background". The background property can be set on classes, ids or directly on the HTML element.

```
.background, #background, body{  
background: rgb(219, 177, 137) }
```

If only the background color should be changed can be used:

```
.background{ background-color: rgb(219,  
177, 137) }
```

This example shows the color as background, it is applied via the CSS property "background".

To optimize and compress your CSS code, you can use our [online CSS compressor and optimizer](#) based on csstidy. If you want to create a linear or radial gradient as background or border, check our [CSS Gradient Generator](#).

Hey! You found this booklet interesting? Support Converting Colors with the new Membership Option!

The pro membership hides all ads, plus gives you double the colors in the color bucket, and more awesome pro features!

[Learn more, Memberships starting at \\$2.50/m!](#)

**Follow me
on Twitter!**

@ConvertingColor