

Converting Colors

YUV(185.0370, -9.3852,
23.6466)

Have a look what the booklet for
YUV(185.0370, -9.3852, 23.6466)
contains.

YUV(185.0370, -9.3852, 23.6466)	3
<i>Conversions</i>	4
<i>Details</i>	6
<i>Harmonies</i>	12
<i>Previews</i>	24
<i>Color Blindness Simulation</i>	28
<i>CSS Examples</i>	31

Color

**YUV(185.0370, -9.3852,
23.6466)**

Conversions

Conversions Part 1

Format	Color
Hex	D4AFA6
RGB	212, 175, 166
RGB Percent	83%, 69%, 65%
CMY	0.1686, 0.3137, 0.3490
CMYK	0.00, 0.17, 0.22, 0.17
HSL	12°, 35%, 74%
HSV	12°, 22%, 83%
XYZ	49.3643, 47.4102, 42.6257
YIQ	185.0370, 24.9410, 5.0450

Conversions

Conversions Part 2

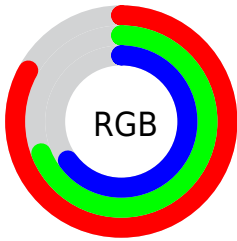
Format	Color
R _Y B	212, 177, 166
Decimal	13938598
CIE Lab	74.45, 12.03, 9.64
CIE LCh	74, 15.420, 38.708
Yxy	47.4102, 0.3541, 0.3401
Android (android.graphics.Color)	4292128678 (0xFFD4AFA6)
YUV	185.0370, -9.3852, 23.6466
Hunter-Lab	68.8550, 7.4758, 11.4942

Details

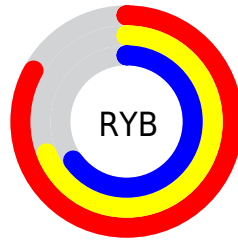
The YUV color $185.0370, -9.3852, 23.6466$ is a light color, and the websafe version is hex $CC9999$. A complement of this color would be $192.9630, 9.3852, -23.6466$, and the grayscale version is $185.0000, 0.0000, 0.0000$.

A 20% lighter version of the original color is $237.0360, -7.9057, 15.7544$, and $131.5530, -8.6536, 22.3170$ is the 20% darker color. If you saturate the color by 10%, you get $172.6640, -13.6384, 34.4977$, and if you desaturate by 10%, it is $197.4100, -5.1321, 12.7954$.

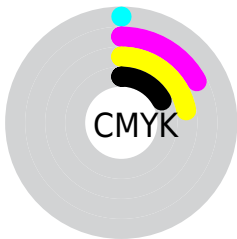
Distribution



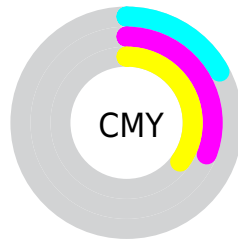
- Red (83%)
- Green (69%)
- Blue (65%)



- Red (83%)
- Yellow (69%)
- Blue (65%)



- Cyan (0%)
- Magenta (17%)
- Yellow (22%)
- Black (17%)





- Cyan (17%)
- Magenta (31%)
- Yellow (35%)

Brightness & Saturation Gradients

These gradients show how the YUV color 185.0370, -9.3852, 23.6466 changes by changing the brightness by 10 percent. The first figure shows a shift by +10% for each color and the second figure -10%.


Similar to the brightness gradients but the following saturation gradients show a change of the YUV color 185.0370, -9.3852, 23.6466 by changing the saturation by 10% instead.

 185.0370, -9.3852,
23.6466

 185.0370, -9.3852,
23.6466

255.0000, 0.0000,
0.0000


 157.8520, -8.8010,
22.9318


 237.0360, -7.9057,
15.7544


 131.5530, -8.6536,
22.3170

 254.4300, -2.1840,
0.4999

 106.6560, -8.2114,
20.4727

 82.3570, -8.0640,
19.8579

 58.8730, -7.3324,
18.5284

 37.0900, -6.4534,
16.5841

 13.9870, -6.8956,

18.4284

■ 0.0000, 0.0000,
0.0000

■ 185.0370, -9.3852,
23.6466

■ 185.0370, -9.3852,
23.6466

■ 172.6640,
-13.6384, 34.4977

■ 197.4100, -5.1321,
12.7954

■ 160.2910,
-17.8915, 45.3488

■ 209.7830, -0.8790,
1.9443

■ 147.8040,
-22.5814, 56.2999

■ 222.2700, 3.8109,
-9.0068

■ 135.4310,
-26.8345, 67.1510

■ 234.6430, 8.0640,
-19.8579

■ 123.0580,
-31.0876, 78.0021

■ 242.1430, 6.3385,
-26.4354

■ 110.6850,
-35.3407, 88.8533

■ 98.3120, -39.5938,
99.7044

■ 87.4550, -43.1153,
109.2260

Harmonies

Analogous

The Analogous color harmony consists of three colors that are next to each other on the color wheel.



185.6440, -3.2755, 23.9912



185.0370, -9.3852, 23.6466



183.9670, -13.2947, 17.5689

Triad

The Triadic color harmony groups three colors that are evenly spaced from another and form a triangle on the color wheel.



185.0370, -9.3852, 23.6466



179.2660, -3.5821, -17.7733



183.2020, 13.7044, -8.9472

Complementary

The Complementary color scheme is a pair of colors which are on the opposite of each other on the color wheel.



185.0370, -9.3852, 23.6466



192.9630, 9.3852, -23.6466

Split Complementary

Split-complementary colors differ from the complementary color scheme. The scheme consists of three colors, the original color and two neighbors of the complement color.



180.2390, 14.1792, -21.2576



185.0370, -9.3852, 23.6466



178.2740, 4.3019, -26.5503

Square

The Square scheme is like the rectangle color scheme, but the four colors are evenly spaced on the color wheel.



185.0370, -9.3852, 23.6466



180.7360, -9.7298, -5.9075



178.2830, 10.7065, -27.4352



184.9650, 9.8773, 5.2927

Rectangle

The Rectangle color scheme consists of four colors that form a rectangle on the color wheel.



185.0370, -9.3852, 23.6466



182.8090, -13.7098, 10.6915



178.2830, 10.7065, -27.4352



182.5820, 14.0101, -13.6654

Sweetspot

The Sweet Spot groups the original color and five complimentary colors.



185.0370, -9.3852, 23.6466



244.7300, -3.8109, 9.0068



184.0860, 9.8176, 24.4806



121.4630, -2.2003, 5.7329



0.0000, 0.0000, 0.0000



128.0000, 0.0000, 0.0000

Same Dimension

The Same Dimension uses a secret algorithm to generate beautiful new colors.



185.0370, -9.3852, 23.6466



216.3650, -13.4909, 33.8829



197.9510, -15.7518, 12.3210



100.4630, -2.2003, 5.7329



70.5000, -34.7565, 88.1385



17.5530, -8.6536, 22.3170

Inverse Universe

The Inverse Universe completely reimagines the original color for something new.



192.9630, 9.3852, -23.6466



227.6350, 13.4909, -33.8829



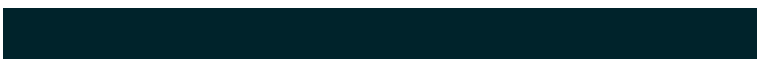
180.0490, 15.7518, -12.3210



102.5370, 2.2003, -5.7329



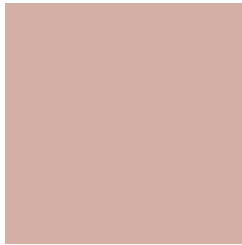
99.9130, 35.0459, -87.6237



25.4470, 8.6536, -22.3170

Previews

White Background



This preview shows how the YUV color 185.0370, -9.3852, 23.6466 looks on a white background.

Color Contrast Check

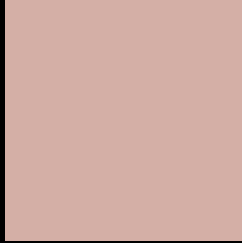
Large Text (above 18pt) WCAG AA × Fail

Any Text WCAG AA × Fail

Large Text (above 18pt) WCAG AAA × Fail

Any Text WCAG AAA × Fail

Black Background



This preview shows how the YUV color 185.0370, -9.3852, 23.6466 looks on a black background.

Color Contrast Check

Large Text (above 18pt) WCAG AA ✓ Pass

Any Text WCAG AA ✓ Pass

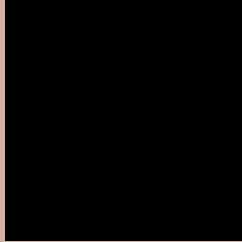
Large Text (above 18pt) WCAG AAA ✓ Pass

Any Text WCAG AAA ✓ Pass

If you want to check with other color combinations, try the [Color Contrast Checker](#).

YUV 185.0370, -9.3852, 23.6466

Background



This preview shows how black text looks on a background with the YUV color 185.0370, -9.3852, 23.6466.



This preview shows how white text looks on a background with the YUV color 185.0370, -9.3852,

Color Blindness Simulation

Color vision deficiency is a very complex topic, and I could not describe the different causes any better than Wikipedia does, so if you want to learn more, you should check out their [article about color blindness](#).

Dichromacy



Original Color

185.0370, -9.3852, 23.6466

Protanopia

183.6110, -6.7102, 5.6032

Deuteranopia

185.0150, -9.3744, 20.1578



Tritanopia

186.0400, -0.5127, 24.5209

Trichromacy



Original Color

185.0370, -9.3852, 23.6466

Protanomaly

184.1280, -7.4581, 12.1657

Deuteranomaly

184.7270, -9.2324, 21.2874

Tritanomaly

185.5300, -3.7123, 24.0912

Monochromacy



Original Color

185.0370, -9.3852, 23.6466

Achromatopsia

185.0000, 0.0000, 0.0000

Achromatomaly

184.8440, -3.3741, 8.9068

CSS Examples

Text

The CSS property to change the color of the text to YUV 185.0370, -9.3852, 23.6466 is called "color". The color property can be set on classes, ids or directly on the HTML element.

This example shows how text in the color `rgb(212, 175, 166)` looks like.

```
.text, #text, p{  
    color:rgb(212, 175, 166)  
}
```

If you want to add a text shadow in that color use the text-shadow property, you can generate a text shadow directly with our [CSS Text Shadow Generator](#).

Here you see how black text with a 4 pixel rgb(212, 175, 166) colored shadow looks like.

```
.shadow{ text-shadow: 4px 4px 2px rgb(212, 175, 166) }
```

Border

The CSS property to change the border of an element to YUV 185.0370, -9.3852, 23.6466 is called "border". The border property can be set on classes, ids or directly on the HTML element.

This example shows the color as border, it can be applied via the CSS property "border" or "border-color".

```
.border, #border, table{ border:4px solid rgb(212, 175, 166) }
```


If only the border color should be changed use the property `border-color`.

```
.border{ border-color:rgb(212, 175, 166) }
```

If you want to add a box shadow in that color use:

Here you see how a box with a 4 pixel `rgb(212, 175, 166)` colored shadow looks like.

```
.boxshadow{ -moz-box-shadow:4px 4px 4px  
4px rgb(212, 175, 166); -webkit-box-  
shadow:4px 4px 4px 4px rgb(212, 175, 166);  
box-shadow:4px 4px 4px 4px rgb(212, 175,  
166) }
```

Background

The CSS property to change the background color of an element to YUV 185.0370, -9.3852, 23.6466 is called "background". The background property can be set on classes, ids or directly on the HTML element.

```
.background, #background, body{  
background: rgb(212, 175, 166) }
```

If only the background color should be changed can be used:

```
.background{ background-color: rgb(212,  
175, 166) }
```

This example shows the color as background, it is applied via the CSS property "background".

To optimize and compress your CSS code, you can use our [online CSS compressor and optimizer](#) based on csstidy. If you want to create a linear or radial gradient as background or border, check our [CSS Gradient Generator](#).

Hey! You found this booklet interesting? Support Converting Colors with the new Membership Option!

The pro membership hides all ads, plus gives you double the colors in the color bucket, and more awesome pro features!

[Learn more, Memberships starting at \\$2.50/m!](#)

**Follow me
on Twitter!**

@ConvertingColor