

Converting Colors

YUV(185.2000, -9.9586,
20.8726)

Have a look what the booklet for
YUV(185.2000, -9.9586, 20.8726)
contains.

YUV(185.2000, -9.9586, 20.8726)	3
<i>Conversions</i>	4
<i>Details</i>	6
<i>Harmonies</i>	12
<i>Previews</i>	24
<i>Color Blindness Simulation</i>	28
<i>CSS Examples</i>	31

Color

**YUV(185.2000, -9.9586,
20.8726)**

Conversions

Conversions Part 1

Format	Color
Hex	D1B1A5
RGB	209, 177, 165
RGB Percent	82%, 69%, 65%
CMY	0.1804, 0.3059, 0.3529
CMYK	0.00, 0.15, 0.21, 0.18
HSL	16°, 32%, 73%
HSV	16°, 21%, 82%
XYZ	48.8082, 47.7162, 42.2350
YIQ	185.2000, 22.9240, 3.0520

Conversions

Conversions Part 2

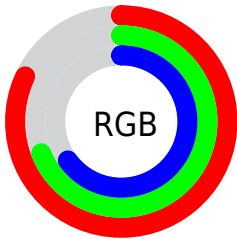
Format	Color
R_{YB}	209, 182, 165
Decimal	13742501
CIE _{Lab}	74.65, 9.68, 10.43
CIE _{LCh}	75, 14.228, 47.123
Yxy	47.7162, 0.3517, 0.3439
Android (android.graphics.Color)	4291932581 (0xFFD1B1A5)
YUV	185.2000, -9.9586, 20.8726
Hunter-Lab	69.0769, 5.2394, 12.1028

Details

The YUV color $185.2000, -9.9586, 20.8726$ is a light color, and the websafe version is hex $CC9999$. A complement of this color would be $188.8000, 9.9586, -20.8726$, and the grayscale version is $185.0000, 0.0000, 0.0000$.

A 20% lighter version of the original color is $238.0960, -8.9213, 14.8248$, and $131.7160, -9.2270, 19.5431$ is the 20% darker color. If you saturate the color by 10%, you get $174.0010, -14.7905, 30.6941$, and if you desaturate by 10%, it is $196.3990, -5.1267, 11.0511$.

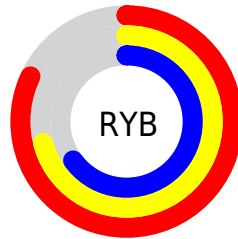
Distribution



Red (82%)

Green (69%)

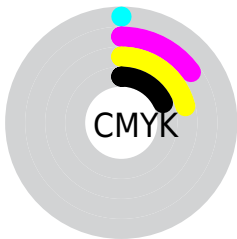
Blue (65%)



Red (82%)

Yellow (71%)

Blue (65%)

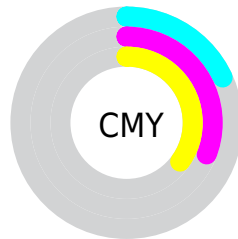


Cyan (0%)

Magenta (15%)

Yellow (21%)

Black (18%)



Cyan (18%)

Magenta (31%)

Yellow (35%)

Brightness & Saturation Gradients


These gradients show how the YUV color 185.2000, -9.9586, 20.8726 changes by changing the brightness by 10 percent. The first figure shows a shift by +10% for each color and the second figure -10%.


Similar to the brightness gradients but the following saturation gradients show a change of the YUV color 185.2000, -9.9586, 20.8726 by changing the saturation by 10% instead.


 185.2000, -9.9586,
20.8726


 185.2000, -9.9586,
20.8726


255.0000, 0.0000,
0.0000


 158.0150, -9.3744,
20.1578


 238.0960, -8.9213,
14.8248


 131.7160, -9.2270,
19.5431

 254.3160, -2.6208,
0.5999

 106.5310, -8.6428,
18.8283

 82.5200, -8.6374,
17.0840

 59.0360, -7.9057,
15.7544

 36.9650, -6.8847,
14.9397

 15.1500, -7.4689,

15.6545

■ 0.0000, 0.0000,
0.0000

■ 185.2000, -9.9586,
20.8726

■ 185.2000, -9.9586,
20.8726

■ 174.0010,
-14.7905, 30.6941

■ 196.3990, -5.1267,
11.0511

■ 162.8020,
-19.6224, 40.5156

■ 207.5980, -0.2948,
1.2296

■ 151.0160,
-24.1649, 50.8520

■ 219.3840, 4.2477,
-9.1068

■ 139.8170,
-28.9968, 60.6735

■ 230.5830, 9.0796,
-18.9283

■ 128.7320,
-33.3919, 70.3950

■ 240.0720, 7.3595,
-27.2501

■ 117.5330,
-38.2238, 80.2166

■ 241.2460, 6.7807,
-28.2797

■ 106.3340,
-43.0557, 90.0381

■ 95.9500, -47.3033,
99.1449

Harmonies

Analogous

The Analogous color harmony consists of three colors that are next to each other on the color wheel.



186.1770, -5.0173, 22.6468



185.2000, -9.9586, 20.8726



184.0590, -12.8471, 13.9803

Triad

The Triadic color harmony groups three colors that are evenly spaced from another and form a triangle on the color wheel.



185.2000, -9.9586, 20.8726



179.5370, -1.2507, -18.8879



184.0670, 11.7990, -4.4438

Complementary

The Complementary color scheme is a pair of colors which are on the opposite of each other on the color wheel.



185.2000, -9.9586, 20.8726



188.8000, 9.9586, -20.8726

Split Complementary

Split-complementary colors differ from the complementary color scheme. The scheme consists of three colors, the original color and two neighbors of the complement color.



182.3320, 13.1473, -16.9542



185.2000, -9.9586, 20.8726



179.0400, 5.8963, -24.5911

Square

The Square scheme is like the rectangle color scheme, but the four colors are evenly spaced on the color wheel.



185.2000, -9.9586, 20.8726



180.9960, -7.3930, -8.7665



180.0060, 10.8430, -24.5613



185.8190, 7.9772, 8.0517

Rectangle

The Rectangle color scheme consists of four colors that form a rectangle on the color wheel.



185.2000, -9.9586, 20.8726



183.1290, -12.3886, 6.9029



180.0060, 10.8430, -24.5613



183.5610, 12.5414, -9.2620

Sweetspot

The Sweet Spot groups the original color and five complimentary colors.



185.2000, -9.9586, 20.8726



246.8330, -3.3687, 7.1625



181.8040, 7.4916, 23.8509



122.8650, -1.9054, 4.5034



0.0000, 0.0000, 0.0000



128.0000, 0.0000, 0.0000

Same Dimension

The Same Dimension uses a secret algorithm to generate beautiful new colors.



185.2000, -9.9586, 20.8726



220.7020, -14.6431, 30.0793



198.1140, -16.3252, 9.5470



99.0500, -2.4897, 5.2181



77.2340, -38.0764, 79.6018



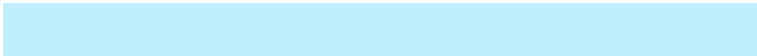
18.7160, -9.2270, 19.5431

Inverse Universe

The Inverse Universe completely reimagines the original color for something new.



188.8000, 9.9586, -20.8726



225.8850, 14.3537, -30.5941



175.8860, 16.3252, -9.5470



99.9500, 2.4897, -5.2181



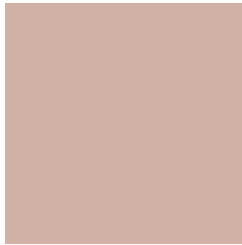
90.7660, 38.0764, -79.6018



22.2840, 9.2270, -19.5431

Previews

White Background



This preview shows how the YUV color 185.2000, -9.9586, 20.8726 looks on a white background.

Color Contrast Check

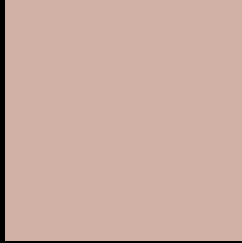
Large Text (above 18pt) WCAG AA × Fail

Any Text WCAG AA × Fail

Large Text (above 18pt) WCAG AAA × Fail

Any Text WCAG AAA × Fail

Black Background



This preview shows how the YUV color 185.2000, -9.9586, 20.8726 looks on a black background.

Color Contrast Check

Large Text (above 18pt) WCAG AA ✓ Pass

Any Text WCAG AA ✓ Pass

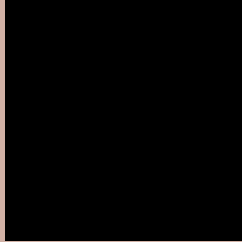
Large Text (above 18pt) WCAG AAA ✓ Pass

Any Text WCAG AAA ✓ Pass

If you want to check with other color combinations, try the [Color Contrast Checker](#).

YUV 185.2000, -9.9586, 20.8726

Background



This preview shows how black text looks on a background with the YUV color 185.2000, -9.9586, 20.8726.



This preview shows how white text looks on a background with the YUV color 185.2000, -9.9586,

20.8726.

Color Blindness Simulation

Color vision deficiency is a very complex topic, and I could not describe the different causes any better than Wikipedia does, so if you want to learn more, you should check out their [article about color blindness](#).

Dichromacy



Original Color

185.2000, -9.9586, 20.8726

Protanopia

183.6820, -7.7312, 6.4179

Deuteranopia

184.9010, -9.8112, 20.2578



Tritanopia

186.8440, 0.0769, 22.0618

Trichromacy



Original Color

185.2000, -9.9586, 20.8726

Protanomaly

184.4870, -8.6211, 11.8509

Deuteranomaly

184.9010, -9.8112, 20.2578

Tritanomaly

186.2200, -3.5595, 21.7321

Monochromacy



Original Color

185.2000, -9.9586, 20.8726

Achromatopsia

185.0000, 0.0000, 0.0000

Achromatomaly

185.1320, -3.5161, 7.7772

CSS Examples

Text

The CSS property to change the color of the text to YUV 185.2000, -9.9586, 20.8726 is called "color". The color property can be set on classes, ids or directly on the HTML element.

This example shows how text in the color `rgb(209, 177, 165)` looks like.

```
.text, #text, p{  
    color:rgb(209, 177, 165)  
}
```

If you want to add a text shadow in that color use the text-shadow property, you can generate a text shadow directly with our [CSS Text Shadow Generator](#).

Here you see how black text with a 4 pixel rgb(209, 177, 165) colored shadow looks like.

```
.shadow{ text-shadow: 4px 4px 2px rgb(209, 177, 165) }
```

Border

The CSS property to change the border of an element to YUV 185.2000, -9.9586, 20.8726 is called "border". The border property can be set on classes, ids or directly on the HTML element.

This example shows the color as border, it can be applied via the CSS property "border" or "border-color".

```
.border, #border, table{ border:4px solid rgb(209, 177, 165) }
```


If only the border color should be changed use the property `border-color`.

```
.border{ border-color:rgb(209, 177, 165) }
```

If you want to add a box shadow in that color use:

Here you see how a box with a 4 pixel `rgb(209, 177, 165)` colored shadow looks like.

```
.boxshadow{ -moz-box-shadow:4px 4px 4px  
4px rgb(209, 177, 165); -webkit-box-  
shadow:4px 4px 4px 4px rgb(209, 177, 165);  
box-shadow:4px 4px 4px 4px rgb(209, 177,  
165) }
```

Background

The CSS property to change the background color of an element to YUV 185.2000, -9.9586, 20.8726 is called "background". The background property can be set on classes, ids or directly on the HTML element.

```
.background, #background, body{  
background: rgb(209, 177, 165) }
```

If only the background color should be changed can be used:

```
.background{ background-color: rgb(209,  
177, 165) }
```

This example shows the color as background, it is applied via the CSS property "background".

To optimize and compress your CSS code, you can use our [online CSS compressor and optimizer](#) based on csstidy. If you want to create a linear or radial gradient as background or border, check our [CSS Gradient Generator](#).

Hey! You found this booklet interesting? Support Converting Colors with the new Membership Option!

The pro membership hides all ads, plus gives you double the colors in the color bucket, and more awesome pro features!

[Learn more, Memberships starting at \\$2.50/m!](#)

**Follow me
on Twitter!**

@ConvertingColor