

Converting Colors

YUV(185.6700, -16.1063,
32.7384)

Have a look what the booklet for
YUV(185.6700, -16.1063, 32.7384)
contains.

YUV(185.6700, -16.1063, 32.7384)	3
<i>Conversions</i>	4
<i>Details</i>	6
<i>Harmonies</i>	12
<i>Previews</i>	24
<i>Color Blindness Simulation</i>	28
<i>CSS Examples</i>	31

Color

**YUV(185.6700, -16.1063,
32.7384)**

Conversions

Conversions Part 1

Format	Color
Hex	DFAD99
RGB	223, 173, 153
RGB Percent	87%, 68%, 60%
CMY	0.1255, 0.3216, 0.4000
CMYK	0.00, 0.22, 0.31, 0.13
HSL	17°, 52%, 74%
HSV	17°, 31%, 87%
XYZ	51.1248, 47.8750, 36.6832
YIQ	185.6700, 36.2200, 4.3800

Conversions

Conversions Part 2

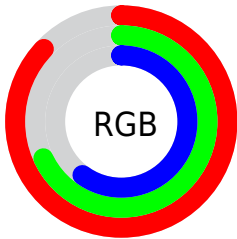
Format	Color
R _Y B	223, 181, 153
Decimal	14658969
CIE Lab	74.75, 15.48, 17.29
CIE LCh	75, 23.213, 48.157
Yxy	47.8750, 0.3768, 0.3528
Android (android.graphics.Color)	4292849049 (0xFFDFAD99)
YUV	185.6700, -16.1063, 32.7384
Hunter-Lab	69.1918, 10.8054, 17.0006

Details

The YUV color $185.6700, -16.1063, 32.7384$ is a light color, and the websafe version is hex $CC9999$. A complement of this color would be $190.3300, 16.1063, -32.7384$, and the grayscale version is $186.0000, 0.0000, 0.0000$.

A 20% lighter version of the original color is $234.2660, -13.4421, 18.1837$, and $132.5880, -15.0799, 30.1793$ is the 20% darker color. If you saturate the color by 10%, you get $173.7700, -21.0856, 43.1747$, and if you desaturate by 10%, it is $197.5700, -11.1270, 22.3021$.

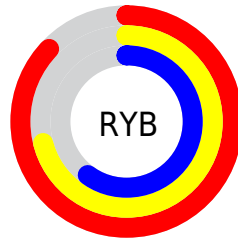
Distribution



Red (87%)

Green (68%)

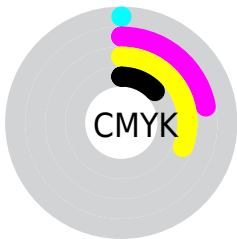
Blue (60%)



Red (87%)

Yellow (71%)

Blue (60%)

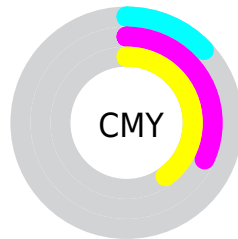


Cyan (0%)

Magenta (22%)

Yellow (31%)

Black (13%)



Cyan (13%)

Magenta (32%)

Yellow (40%)

Brightness & Saturation Gradients

These gradients show how the YUV color 185.6700, -16.1063, 32.7384 changes by changing the brightness by 10 percent. The first figure shows a shift by +10% for each color and the second figure -10%.

Similar to the brightness gradients but the following saturation gradients show a change of the YUV color 185.6700, -16.1063, 32.7384 by changing the saturation by 10% instead.

■ 185.6700,
-16.1063, 32.7384

■ 185.6700,
-16.1063, 32.7384

255.0000, 0.0000,
0.0000

■ 158.1860,
-15.3747, 31.4089

■ 234.2660,
-13.4421, 18.1837

■ 132.5880,
-15.0799, 30.1793

■ 252.8340, -8.2992,
1.8996

■ 106.8050,
-14.2009, 28.2350

■ 82.3210, -13.4693,
26.9055

■ 58.5380, -12.5902,
24.9612

■ 35.7550, -11.7112,
23.0169

■ 14.0090, -6.9064,

21.9171

0.0000, 0.0000,
0.0000

185.6700,
-16.1063, 32.7384

185.6700,
-16.1063, 32.7384

173.7700,
-21.0856, 43.1747

197.5700,
-11.1270, 22.3021

161.7560,
-26.5017, 53.7110

209.5840, -5.7109,
11.7658

149.8560,
-31.4810, 64.1473

221.4840, -0.7316,
1.3295

137.9560,
-36.4603, 74.5836

233.3840, 4.2477,
-9.1068

125.9420,
-41.8764, 85.1199

244.2580, 5.2958,
-18.6433

■ 114.0420,
-46.8557, 95.5562

■ 245.4320, 4.7170,
-19.6729

■ 104.2450,
-51.3928, 104.1481

Harmonies

Analogous

The Analogous color harmony consists of three colors that are next to each other on the color wheel.



186.9830, -7.3866, 35.9719



185.6700, -16.1063, 32.7384



184.1540, -20.2889, 20.9129

Triad

The Triadic color harmony groups three colors that are evenly spaced from another and form a triangle on the color wheel.



185.6700, -16.1063, 32.7384



176.4490, -1.2074, -32.8428



184.4070, 19.5193, -7.3729

Complementary

The Complementary color scheme is a pair of colors which are on the opposite of each other on the color wheel.



185.6700, -16.1063, 32.7384



190.3300, 16.1063, -32.7384

Split Complementary

Split-complementary colors differ from the complementary color scheme. The scheme consists of three colors, the original color and two neighbors of the complement color.



180.2580, 22.0578, -28.2903



185.6700, -16.1063, 32.7384



174.7710, 10.4659, -43.6492

Square

The Square scheme is like the rectangle color scheme, but the four colors are evenly spaced on the color wheel.



185.6700, -16.1063, 32.7384



178.8120, -11.7393, -14.7441



176.6600, 18.9016, -42.6748



187.1170, 12.7603, 13.9294

Rectangle

The Rectangle color scheme consists of four colors that form a rectangle on the color wheel.



185.6700, -16.1063, 32.7384



182.2020, -19.8196, 10.3468



176.6600, 18.9016, -42.6748



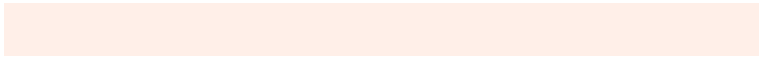
183.7050, 20.8514, -14.6503

Sweetspot

The Sweet Spot groups the original color and five complimentary colors.



185.6700, -16.1063, 32.7384



242.9860, -5.4161, 10.5363



179.6300, 11.5214, 38.0355



119.8330, -3.3687, 7.1625



0.0000, 0.0000, 0.0000



128.0000, 0.0000, 0.0000

Same Dimension

The Same Dimension uses a secret algorithm to generate beautiful new colors.



185.6700, -16.1063, 32.7384



203.4390, -22.4014, 45.2190



206.2150, -26.2350, 14.7204



106.0500, -2.4896, 5.2182



81.9740, -40.4132, 82.4608



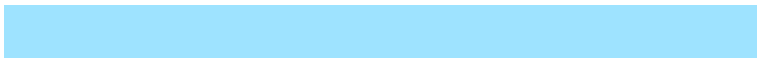
22.5700, -11.1270, 22.3021

Inverse Universe

The Inverse Universe completely reimagines the original color for something new.



190.3300, 16.1063, -32.7384



209.5610, 22.4014, -45.2190



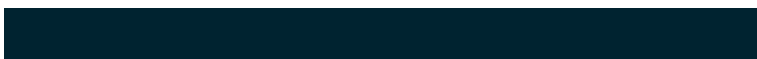
169.7850, 26.2350, -14.7204



106.9500, 2.4897, -5.2181



94.0260, 40.4132, -82.4608



26.0170, 10.8376, -22.8169

Previews

White Background



This preview shows how the YUV color 185.6700, -16.1063, 32.7384 looks on a white background.

Color Contrast Check

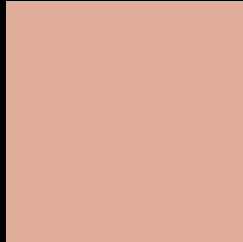
Large Text (above 18pt) WCAG AA × Fail

Any Text WCAG AA × Fail

Large Text (above 18pt) WCAG AAA × Fail

Any Text WCAG AAA × Fail

Black Background



This preview shows how the YUV color 185.6700, -16.1063, 32.7384 looks on a black background.

Color Contrast Check

Large Text (above 18pt) WCAG AA ✓ Pass

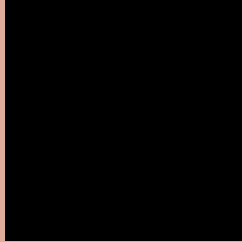
Any Text WCAG AA ✓ Pass

Large Text (above 18pt) WCAG AAA ✓ Pass

Any Text WCAG AAA ✓ Pass

If you want to check with other color combinations, try the [Color Contrast Checker](#).

YUV 185.6700, -16.1063, 32.7384 Background



This preview shows how black text looks on a background with the YUV color 185.6700, -16.1063, 32.7384.



This preview shows how white text looks on a background with the YUV color 185.6700, -16.1063,

32.7384.

Color Blindness Simulation

Color vision deficiency is a very complex topic, and I could not describe the different causes any better than Wikipedia does, so if you want to learn more, you should check out their [article about color blindness](#).

Dichromacy



Original Color

185.6700, -16.1063, 32.7384

Protanopia

183.7270, -12.6834, 8.1324

Deuteranopia

184.9140, -16.2266, 24.6314



Tritanopia

187.5250, -2.7238, 33.7426

Trichromacy



Original Color

185.6700, -16.1063, 32.7384

Protanomaly

184.4400, -14.0209, 17.1541

Deuteranomaly

185.5230, -16.5268, 27.6053

Tritanomaly

186.5590, -7.6706, 33.7128

Monochromacy



Original Color

185.6700, -16.1063, 32.7384

Achromatopsia

186.0000, 0.0000, 0.0000

Achromatomaly

185.5840, -5.7109, 11.7658

CSS Examples

Text

The CSS property to change the color of the text to YUV 185.6700, -16.1063, 32.7384 is called "color". The color property can be set on classes, ids or directly on the HTML element.

This example shows how text in the color `rgb(223, 173, 153)` looks like.

```
.text, #text, p{  
    color:rgb(223, 173, 153)  
}
```

If you want to add a text shadow in that color use the text-shadow property, you can generate a text shadow directly with our [CSS Text Shadow Generator](#).

Here you see how black text with a 4 pixel rgb(223, 173, 153) colored shadow looks like.

```
.shadow{ text-shadow: 4px 4px 2px rgb(223, 173, 153) }
```

Border

The CSS property to change the border of an element to YUV 185.6700, -16.1063, 32.7384 is called "border".

The border property can be set on classes, ids or directly on the HTML element.

This example shows the color as border, it can be applied via the CSS property "border" or "border-color".

```
.border, #border, table{ border:4px solid rgb(223, 173, 153) }
```


If only the border color should be changed use the property `border-color`.

```
.border{ border-color:rgb(223, 173, 153) }
```

If you want to add a box shadow in that color use:

Here you see how a box with a 4 pixel `rgb(223, 173, 153)` colored shadow looks like.

```
.boxshadow{ -moz-box-shadow:4px 4px 4px  
4px rgb(223, 173, 153); -webkit-box-  
shadow:4px 4px 4px 4px rgb(223, 173, 153);  
box-shadow:4px 4px 4px 4px rgb(223, 173,  
153) }
```

Background

The CSS property to change the background color of an element to YUV 185.6700, -16.1063, 32.7384 is called "background". The background property can be set on classes, ids or directly on the HTML element.

```
.background, #background, body{  
background: rgb(223, 173, 153) }
```

If only the background color should be changed can be used:

```
.background{ background-color: rgb(223,  
173, 153) }
```

This example shows the color as background, it is applied via the CSS property "background".

To optimize and compress your CSS code, you can use our [online CSS compressor and optimizer](#) based on csstidy. If you want to create a linear or radial gradient as background or border, check our [CSS Gradient Generator](#).

Hey! You found this booklet interesting? Support Converting Colors with the new Membership Option!

The pro membership hides all ads, plus gives you double the colors in the color bucket, and more awesome pro features!

[Learn more, Memberships starting at \\$2.50/m!](#)

**Follow me
on Twitter!**

@ConvertingColor