

Converting Colors

YUV(185.7870, -10.2480,
20.3578)

Have a look what the booklet for
YUV(185.7870, -10.2480, 20.3578)
contains.

YUV(185.7870, -10.2480, 20.3578)	3
<i>Conversions</i>	4
<i>Details</i>	6
<i>Harmonies</i>	12
<i>Previews</i>	24
<i>Color Blindness Simulation</i>	28
<i>CSS Examples</i>	31

Color

**YUV(185.7870, -10.2480,
20.3578)**

Conversions

Conversions Part 1

Format	Color
Hex	D1B2A5
RGB	209, 178, 165
RGB Percent	82%, 70%, 65%
CMY	0.1804, 0.3020, 0.3529
CMYK	0.00, 0.15, 0.21, 0.18
HSL	18°, 32%, 73%
HSV	18°, 21%, 82%
XYZ	49.0064, 48.1127, 42.3011
YIQ	185.7870, 22.6490, 2.5290

Conversions

Conversions Part 2

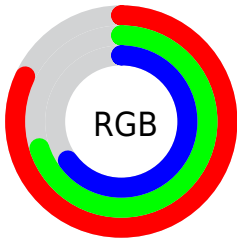
Format	Color
R_{YB}	209, 183, 165
Decimal	13742757
CIE _{Lab}	74.90, 9.14, 10.78
CIE _{LCh}	75, 14.136, 49.702
Yxy	48.1127, 0.3515, 0.3451
Android (android.graphics.Color)	4291932837 (0xFFD1B2A5)
YUV	185.7870, -10.2480, 20.3578
Hunter-Lab	69.3633, 4.7276, 12.3965

Details

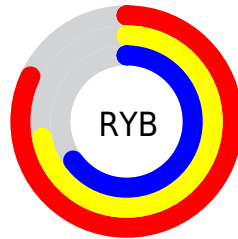
The YUV color $185.7870, -10.2480, 20.3578$ is a light color, and the websafe version is hex $CC9999$. A complement of this color would be $188.2130, 10.2480, -20.3578$, and the grayscale version is $186.0000, 0.0000, 0.0000$.

A 20% lighter version of the original color is $238.6830, -9.2107, 14.3100$, and $132.3030, -9.5164, 19.0283$ is the 20% darker color. If you saturate the color by 10%, you get $174.5880, -15.0799, 30.1793$, and if you desaturate by 10%, it is $196.9860, -5.4161, 10.5363$.

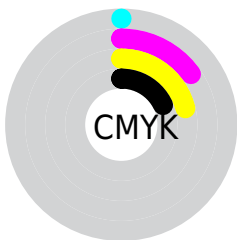
Distribution



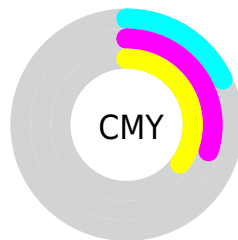
- Red (82%)
- Green (70%)
- Blue (65%)



- Red (82%)
- Yellow (72%)
- Blue (65%)



- Cyan (0%)
- Magenta (15%)
- Yellow (21%)
- Black (18%)



- Cyan (18%)
- Magenta (30%)
- Yellow (35%)

Brightness & Saturation Gradients

These gradients show how the YUV color 185.7870, -10.2480, 20.3578 changes by changing the brightness by 10 percent. The first figure shows a shift by +10% for each color and the second figure -10%.

Similar to the brightness gradients but the following saturation gradients show a change of the YUV color 185.7870, -10.2480, 20.3578 by changing the saturation by 10% instead.

■ 185.7870,
-10.2480, 20.3578

■ 185.7870,
-10.2480, 20.3578

■ 255.0000, 0.0000,
0.0000

■ 158.6020, -9.6638,
19.6430

■ 238.6830, -9.2107,
14.3100

■ 132.3030, -9.5164,
19.0283

■ 254.3160, -2.6208,
0.5999

■ 107.1180, -8.9322,
18.3135

■ 82.5200, -8.6374,
17.0840

■ 59.9220, -8.3425,
15.8544

■ 37.5520, -7.1741,
14.4249

■ 15.7370, -7.7583,

15.1397

0.0000, 0.0000,
0.0000

185.7870,
-10.2480, 20.3578

185.7870,
-10.2480, 20.3578

174.5880,
-15.0799, 30.1793

196.9860, -5.4161,
10.5363

163.9760,
-20.2012, 39.4860

207.5980, -0.2948,
1.2296

152.7770,
-25.0331, 49.3076

218.7970, 4.5371,
-8.5920

141.5780,
-29.8650, 59.1291

229.9960, 9.3690,
-18.4135

130.4930,
-34.2600, 68.8506

239.4850, 7.6489,
-26.7353

■ 119.8810,
-39.3813, 78.1574

■ 241.2460, 6.7807,
-28.2797

■ 108.6820,
-44.2132, 87.9789

■ 98.8850, -48.7503,
96.5709

Harmonies

Analogous

The Analogous color harmony consists of three colors that are next to each other on the color wheel.



186.7640, -5.3067, 22.1320



185.7870, -10.2480, 20.3578



184.4610, -12.5523, 12.7507

Triad

The Triadic color harmony groups three colors that are evenly spaced from another and form a triangle on the color wheel.



185.7870, -10.2480, 20.3578



180.3520, -0.6665, -19.6027



185.3660, 11.6516, -3.8290

Complementary

The Complementary color scheme is a pair of colors which are on the opposite of each other on the color wheel.



185.7870, -10.2480, 20.3578



188.2130, 10.2480, -20.3578

Split Complementary

Split-complementary colors differ from the complementary color scheme. The scheme consists of three colors, the original color and two neighbors of the complement color.



183.0440, 13.2893, -15.8246



185.7870, -10.2480, 20.3578



179.8550, 6.4805, -25.3058

Square

The Square scheme is like the rectangle color scheme, but the four colors are evenly spaced on the color wheel.



185.7870, -10.2480, 20.3578



181.6970, -7.2456, -9.3813



180.8320, 11.4218, -23.5317



186.3030, 7.2456, 9.3813

Rectangle

The Rectangle color scheme consists of four colors that form a rectangle on the color wheel.



185.7870, -10.2480, 20.3578



183.5310, -12.0938, 5.6733



180.8320, 11.4218, -23.5317



184.5720, 12.5360, -7.5176

Sweetspot

The Sweet Spot groups the original color and five complimentary colors.



185.7870, -10.2480, 20.3578



246.8330, -3.3687, 7.1625



181.8040, 7.4916, 23.8509



122.8650, -1.9054, 4.5034



0.0000, 0.0000, 0.0000



128.0000, 0.0000, 0.0000

Same Dimension

The Same Dimension uses a secret algorithm to generate beautiful new colors.



185.7870, -10.2480, 20.3578



221.2890, -14.9325, 29.5645



198.1140, -16.3252, 9.5470



99.0500, -2.4897, 5.2181



79.5820, -39.2339, 77.5426



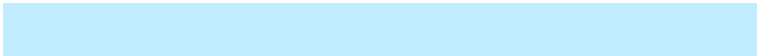
19.3030, -9.5164, 19.0283

Inverse Universe

The Inverse Universe completely reimagines the original color for something new.



188.2130, 10.2480, -20.3578



224.7110, 14.9325, -29.5645



175.8860, 16.3252, -9.5470



99.3630, 2.7790, -4.7034



89.0050, 38.9445, -78.0574



21.6970, 9.5164, -19.0283

Previews

White Background



This preview shows how the YUV color 185.7870, -10.2480, 20.3578 looks on a white background.

Color Contrast Check

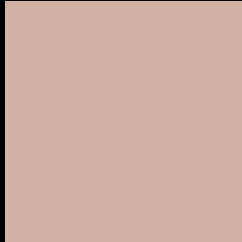
Large Text (above 18pt) WCAG AA × Fail

Any Text WCAG AA × Fail

Large Text (above 18pt) WCAG AAA × Fail

Any Text WCAG AAA × Fail

Black Background



This preview shows how the YUV color 185.7870, -10.2480, 20.3578 looks on a black background.

Color Contrast Check

Large Text (above 18pt) WCAG AA ✓ Pass

Any Text WCAG AA ✓ Pass

Large Text (above 18pt) WCAG AAA ✓ Pass

Any Text WCAG AAA ✓ Pass

If you want to check with other color combinations, try the [Color Contrast Checker](#).

YUV 185.7870, -10.2480, 20.3578

Background



This preview shows how black text looks on a background with the YUV color 185.7870, -10.2480, 20.3578.



This preview shows how white text looks on a background with the YUV color 185.7870, -10.2480,

Color Blindness Simulation

Color vision deficiency is a very complex topic, and I could not describe the different causes any better than Wikipedia does, so if you want to learn more, you should check out their [article about color blindness](#).

Dichromacy



Original Color

185.7870, -10.2480, 20.3578

Protanopia

184.5680, -8.1680, 6.5179

Deuteranopia

185.7870, -10.2480, 20.3578



Tritanopia

187.5450, 0.2243, 21.4470

Trichromacy



Original Color

185.7870, -10.2480, 20.3578

Protanomaly

185.0740, -8.9105, 11.3361

Deuteranomaly

185.7870, -10.2480, 20.3578

Tritanomaly

186.9210, -3.4121, 21.1173

Monochromacy



Original Color

185.7870, -10.2480, 20.3578

Achromatopsia

186.0000, 0.0000, 0.0000

Achromatomaly

185.7190, -3.8055, 7.2624

CSS Examples

Text

The CSS property to change the color of the text to YUV 185.7870, -10.2480, 20.3578 is called "color". The color property can be set on classes, ids or directly on the HTML element.

This example shows how text in the color `rgb(209, 178, 165)` looks like.

```
.text, #text, p{  
    color:rgb(209, 178, 165)  
}
```

If you want to add a text shadow in that color use the text-shadow property, you can generate a text shadow directly with our [CSS Text Shadow Generator](#).

Here you see how black text with a 4 pixel rgb(209, 178, 165) colored shadow looks like.

```
.shadow{ text-shadow: 4px 4px 2px rgb(209, 178, 165) }
```

Border

The CSS property to change the border of an element to YUV 185.7870, -10.2480, 20.3578 is called "border".

The border property can be set on classes, ids or directly on the HTML element.

This example shows the color as border, it can be applied via the CSS property "border" or "border-color".

```
.border, #border, table{ border:4px solid rgb(209, 178, 165) }
```


If only the border color should be changed use the property `border-color`.

```
.border{ border-color:rgb(209, 178, 165) }
```

If you want to add a box shadow in that color use:

Here you see how a box with a 4 pixel `rgb(209, 178, 165)` colored shadow looks like.

```
.boxshadow{ -moz-box-shadow:4px 4px 4px  
4px rgb(209, 178, 165); -webkit-box-  
shadow:4px 4px 4px 4px rgb(209, 178, 165);  
box-shadow:4px 4px 4px 4px rgb(209, 178,  
165) }
```

Background

The CSS property to change the background color of an element to YUV 185.7870, -10.2480, 20.3578 is called "background". The background property can be set on classes, ids or directly on the HTML element.

```
.background, #background, body{  
background: rgb(209, 178, 165) }
```

If only the background color should be changed can be used:

```
.background{ background-color: rgb(209,  
178, 165) }
```

This example shows the color as background, it is applied via the CSS property "background".

To optimize and compress your CSS code, you can use our [online CSS compressor and optimizer](#) based on csstidy. If you want to create a linear or radial gradient as background or border, check our [CSS Gradient Generator](#).

Hey! You found this booklet interesting? Support Converting Colors with the new Membership Option!

The pro membership hides all ads, plus gives you double the colors in the color bucket, and more awesome pro features!

[Learn more, Memberships starting at \\$2.50/m!](#)

**Follow me
on Twitter!**

@ConvertingColor