

Converting Colors

YUV(185.8170, -2.3748,
15.0695)

Have a look what the booklet for
YUV(185.8170, -2.3748, 15.0695)
contains.

YUV(185.8170, -2.3748, 15.0695)	3
<i>Conversions</i>	4
<i>Details</i>	6
<i>Harmonies</i>	12
<i>Previews</i>	24
<i>Color Blindness Simulation</i>	28
<i>CSS Examples</i>	31

Color

**YUV(185.8170, -2.3748,
15.0695)**

Conversions

Conversions Part 1

Format	Color
Hex	CBB2B5
RGB	203, 178, 181
RGB Percent	80%, 70%, 71%
CMY	0.2039, 0.3020, 0.2902
CMYK	0.00, 0.12, 0.11, 0.20
HSL	353°, 19%, 75%
HSV	353°, 12%, 80%
XYZ	48.8895, 47.8735, 50.3798
YIQ	185.8170, 13.9370, 6.2330

Conversions

Conversions Part 2

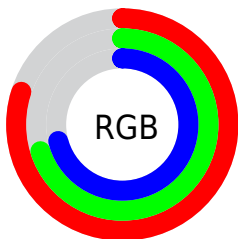
Format	Color
R_{YB}	203, 178, 181
Decimal	13349557
CIE _{Lab}	74.75, 9.47, 1.77
CIE _{LCh}	75, 9.638, 10.565
Yxy	47.8735, 0.3323, 0.3254
Android (android.graphics.Color)	4291539637 (0xFFCBB2B5)
YUV	185.8170, -2.3748, 15.0695
Hunter-Lab	69.1907, 5.0428, 5.2626

Details

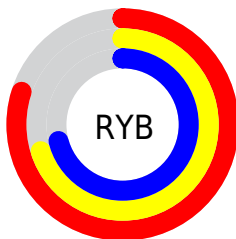
The YUV color $185.8170, -2.3748, 15.0695$ is a light color, and the websafe version is hex `CCCCCC`. A complement of this color would be $195.1830, 2.3748, -15.0695$, and the grayscale version is $186.0000, 0.0000, 0.0000$.

A 20% lighter version of the original color is $240.6210, -1.7852, 12.6104$, and $132.5180, -2.2274, 14.4547$ is the 20% darker color. If you saturate the color by 10%, you get $172.0250, -4.4493, 27.1651$, and if you desaturate by 10%, it is $199.6090, -0.3002, 2.9739$.

Distribution



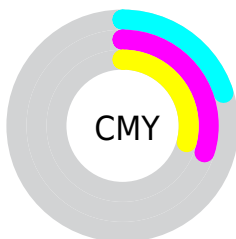
- Red (80%)
- Green (70%)
- Blue (71%)



- Red (80%)
- Yellow (70%)
- Blue (71%)



- Cyan (0%)
- Magenta (12%)
- Yellow (11%)
- Black (20%)



- Cyan (20%)
- Magenta (30%)
- Yellow (29%)

Brightness & Saturation Gradients

These gradients show how the YUV color 185.8170, -2.3748, 15.0695 changes by changing the brightness by 10 percent. The first figure shows a shift by +10% for each color and the second figure -10%.

Similar to the brightness gradients but the following saturation gradients show a change of the YUV color 185.8170, -2.3748, 15.0695 by changing the saturation by 10% instead.

■ 185.8170, -2.3748,
15.0695

■ 185.8170, -2.3748,
15.0695

255.0000, 0.0000,
0.0000

■ 158.5180, -2.2274,
14.4547

■ 240.6210, -1.7852,
12.6104

■ 132.5180, -2.2274,
14.4547

■ 107.2190, -2.0800,
13.8399

■ 82.9200, -1.9326,
13.2252

■ 60.2080, -2.0745,
12.0956

■ 38.0230, -1.4903,
11.3808

■ 16.6210, -1.7852,

12.6104

0.0000, 0.0000,
0.0000

185.8170, -2.3748,
15.0695

185.8170, -2.3748,
15.0695

172.0250, -4.4493,
27.1651

199.6090, -0.3002,
2.9739

157.6460, -6.2345,
39.7755

213.9880, 1.4849,
-9.6365

143.8540, -8.3090,
51.8710

227.7800, 3.5595,
-21.7321

130.1760, -9.9468,
63.8666

239.1100, 6.3548,
-31.6685

116.3840,
-12.0213, 75.9622

239.4520, 7.6652,
-31.9684

■ 102.0050,
-13.8065, 88.5726

■ 88.2130, -15.8810,
100.6682

■ 74.4210, -17.9556,
112.7638

■ 63.4330, -19.4405,
122.4003

Harmonies

Analogous

The Analogous color harmony consists of three colors that are next to each other on the color wheel.



185.9350, 2.0040, 10.5810



185.8170, -2.3748, 15.0695



185.1930, -6.0111, 14.7397

Triad

The Triadic color harmony groups three colors that are evenly spaced from another and form a triangle on the color wheel.



185.8170, -2.3748, 15.0695



182.3710, -6.0989, -3.8334



182.5130, 8.6211, -11.8509

Complementary

The Complementary color scheme is a pair of colors which are on the opposite of each other on the color wheel.



185.8170, -2.3748, 15.0695



195.1830, 2.3748, -15.0695

Split Complementary

Split-complementary colors differ from the complementary color scheme. The scheme consists of three colors, the original color and two neighbors of the complement color.



181.3230, 6.7428, -16.0693



185.8170, -2.3748, 15.0695



181.4670, -1.7092, -11.8106

Square

The Square scheme is like the rectangle color scheme, but the four colors are evenly spaced on the color wheel.



185.8170, -2.3748, 15.0695



183.2580, -8.0152, 4.1587



180.9980, 2.9590, -15.7842



184.4430, 8.1626, -4.7735

Rectangle

The Rectangle color scheme consists of four colors that form a rectangle on the color wheel.



185.8170, -2.3748, 15.0695



185.0140, -7.8949, 12.2657



180.9980, 2.9590, -15.7842



182.0890, 8.3371, -14.1101

Sweetspot

The Sweet Spot groups the original color and five complimentary colors.



185.8170, -2.3748, 15.0695



248.1040, -1.0373, 6.0478



187.4280, 7.6770, 11.0256



123.2070, -0.5951, 4.2035



0.0000, 0.0000, 0.0000



128.0000, 0.0000, 0.0000

Same Dimension

The Same Dimension uses a secret algorithm to generate beautiful new colors.



185.8170, -2.3748, 15.0695



228.8180, -3.8543, 22.9616



190.7580, -6.2897, 10.7362



95.1040, -1.0373, 6.0478



51.9140, -15.7336, 100.0534



11.9320, -3.4175, 22.8616

Inverse Universe

The Inverse Universe completely reimagines the original color for something new.



185.8170, -2.3748, 15.0695



228.8180, -3.8543, 22.9616



190.2420, 6.2897, -10.7362



95.1040, -1.0373, 6.0478



51.9140, -15.7336, 100.0534



11.9320, -3.4175, 22.8616

Previews

White Background



This preview shows how the YUV color 185.8170, -2.3748, 15.0695 looks on a white background.

Color Contrast Check

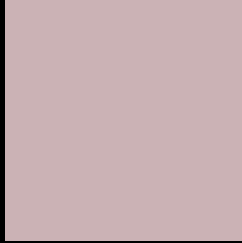
Large Text (above 18pt) WCAG AA × Fail

Any Text WCAG AA × Fail

Large Text (above 18pt) WCAG AAA × Fail

Any Text WCAG AAA × Fail

Black Background



This preview shows how the YUV color 185.8170, -2.3748, 15.0695 looks on a black background.

Color Contrast Check

Large Text (above 18pt) WCAG AA ✓ Pass

Any Text WCAG AA ✓ Pass

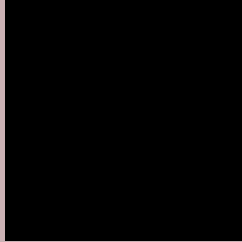
Large Text (above 18pt) WCAG AAA ✓ Pass

Any Text WCAG AAA ✓ Pass

If you want to check with other color combinations, try the [Color Contrast Checker](#).

YUV 185.8170, -2.3748, 15.0695

Background



This preview shows how black text looks on a background with the YUV color 185.8170, -2.3748, 15.0695.



This preview shows how white text looks on a background with the YUV color 185.8170, -2.3748,

Color Blindness Simulation

Color vision deficiency is a very complex topic, and I could not describe the different causes any better than Wikipedia does, so if you want to learn more, you should check out their [article about color blindness](#).

Dichromacy



Original Color

185.8170, -2.3748, 15.0695

Protanopia

184.3100, -0.1528, 2.3591

Deuteranopia

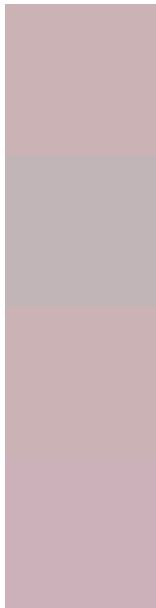
185.8170, -2.3748, 15.0695



Tritanopia

186.5550, 1.6984, 15.2993

Trichromacy



Original Color

185.8170, -2.3748, 15.0695

Protanomaly

184.8160, -0.8953, 7.1774

Deuteranomaly

185.8170, -2.3748, 15.0695

Tritanomaly

186.2130, 0.3880, 15.5992

Monochromacy



Original Color

185.8170, -2.3748, 15.0695

Achromatopsia

186.0000, 0.0000, 0.0000

Achromatomaly

185.8050, -0.8899, 5.4330

CSS Examples

Text

The CSS property to change the color of the text to YUV 185.8170, -2.3748, 15.0695 is called "color". The color property can be set on classes, ids or directly on the HTML element.

This example shows how text in the color `rgb(203, 178, 181)` looks like.

```
.text, #text, p{  
    color:rgb(203, 178, 181)  
}
```

If you want to add a text shadow in that color use the text-shadow property, you can generate a text shadow directly with our [CSS Text Shadow Generator](#).

Here you see how black text with a 4 pixel rgb(203, 178, 181) colored shadow looks like.

```
.shadow{ text-shadow: 4px 4px 2px rgb(203, 178, 181) }
```

Border

The CSS property to change the border of an element to YUV 185.8170, -2.3748, 15.0695 is called "border". The border property can be set on classes, ids or directly on the HTML element.

This example shows the color as border, it can be applied via the CSS property "border" or "border-color".

```
.border, #border, table{ border:4px solid rgb(203, 178, 181) }
```


If only the border color should be changed use the property `border-color`.

```
.border{ border-color:rgb(203, 178, 181) }
```

If you want to add a box shadow in that color use:

Here you see how a box with a 4 pixel `rgb(203, 178, 181)` colored shadow looks like.

```
.boxshadow{ -moz-box-shadow:4px 4px 4px  
4px rgb(203, 178, 181); -webkit-box-  
shadow:4px 4px 4px 4px rgb(203, 178, 181);  
box-shadow:4px 4px 4px 4px rgb(203, 178,  
181) }
```

Background

The CSS property to change the background color of an element to YUV 185.8170, -2.3748, 15.0695 is called "background". The background property can be set on classes, ids or directly on the HTML element.

```
.background, #background, body{  
background: rgb(203, 178, 181) }
```

If only the background color should be changed can be used:

```
.background{ background-color: rgb(203,  
178, 181) }
```

This example shows the color as background, it is applied via the CSS property "background".

To optimize and compress your CSS code, you can use our [online CSS compressor and optimizer](#) based on csstidy. If you want to create a linear or radial gradient as background or border, check our [CSS Gradient Generator](#).

Hey! You found this booklet interesting? Support Converting Colors with the new Membership Option!

The pro membership hides all ads, plus gives you double the colors in the color bucket, and more awesome pro features!

[Learn more, Memberships starting at \\$2.50/m!](#)

**Follow me
on Twitter!**

@ConvertingColor