

Converting Colors

YUV(185.8580, -28.0310,
30.8195)

Have a look what the booklet for
YUV(185.8580, -28.0310, 30.8195)
contains.

YUV(185.8580, -28.0310, 30.8195)	3
<i>Conversions</i>	4
<i>Details</i>	6
<i>Harmonies</i>	12
<i>Previews</i>	24
<i>Color Blindness Simulation</i>	28
<i>CSS Examples</i>	31

Color

**YUV(185.8580, -28.0310,
30.8195)**

Conversions

Conversions Part 1

Format	Color
Hex	DDB381
RGB	221, 179, 129
RGB Percent	87%, 70%, 51%
CMY	0.1333, 0.2980, 0.4941
CMYK	0.00, 0.19, 0.42, 0.13
HSL	33°, 58%, 69%
HSV	33°, 42%, 87%
XYZ	49.9013, 49.1973, 27.6348
YIQ	185.8580, 41.0820, -6.6460

Conversions

Conversions Part 2

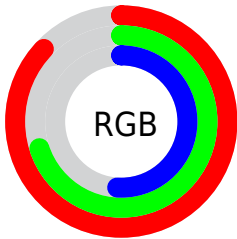
Format	Color
RYB	206, 221, 129
Decimal	14529409
CIELab	75.57, 8.65, 31.26
CIELCh	76, 32.432, 74.538
Yxy	49.1973, 0.3938, 0.3882
Android (android.graphics.Color)	4292719489 (0xFFDDB381)
YUV	185.8580, -28.0310, 30.8195
Hunter-Lab	70.1408, 4.2466, 25.7389

Details

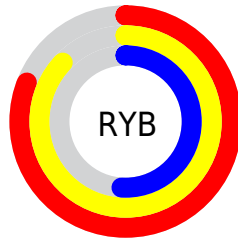
The YUV color **185.8580, -28.0310, 30.8195** is a light color, and the websafe version is hex **CC9966**. A complement of this color would be **164.1420, 28.0310, -30.8195**, and the grayscale version is **186.0000, 0.0000, 0.0000**.

A 20% lighter version of the original color is **234.9380, -26.0984, 17.5944**, and **132.0040, -26.1310, 28.0605** is the 20% darker color. If you saturate the color by 10%, you get **177.4800, -34.7466, 38.1670**, and if you desaturate by 10%, it is **194.2360, -21.3153, 23.4720**.

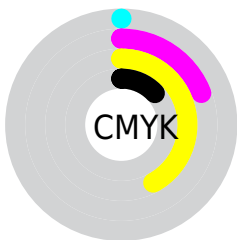
Distribution



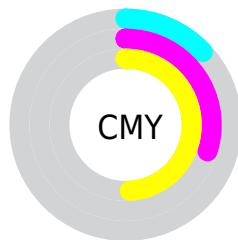
- Red (87%)
- Green (70%)
- Blue (51%)



- Red (81%)
- Yellow (87%)
- Blue (51%)



- Cyan (0%)
- Magenta (19%)
- Yellow (42%)
- Black (13%)



- Cyan (13%)
- Magenta (30%)
- Yellow (49%)

Brightness & Saturation Gradients

These gradients show how the YUV color 185.8580, -28.0310, 30.8195 changes by changing the brightness by 10 percent. The first figure shows a shift by +10% for each color and the second figure -10%.

Similar to the brightness gradients but the following saturation gradients show a change of the YUV color 185.8580, -28.0310, 30.8195 by changing the saturation by 10% instead.

■ 185.8580,
-28.0310, 30.8195

■ 185.8580,
-28.0310, 30.8195

■ 255.0000, 0.0000,
0.0000

■ 158.4880,
-26.8626, 29.3900

■ 234.9380,
-26.0984, 17.5944

■ 132.0040,
-26.1310, 28.0605

■ 249.8700,
-19.6559, 4.4990

■ 106.5200,
-25.3994, 26.7310

■ 253.1760, -6.9888,
1.5996

■ 81.8510, -24.0835,
24.6867

■ 58.5410, -23.9307,
22.3275

■ 37.0120, -18.2469,
19.2835

■ 17.2100, -8.4845,

14.7248

■ 0.0000, 0.0000,
0.0000

■ 185.8580,
-28.0310, 30.8195

■ 185.8580,
-28.0310, 30.8195

■ 177.4800,
-34.7466, 38.1670

■ 194.2360,
-21.3153, 23.4720

■ 169.1020,
-41.4623, 45.5145

■ 202.6140,
-14.5997, 16.1245

■ 160.7240,
-48.1779, 52.8621

■ 210.9920, -7.8841,
8.7770

■ 152.3460,
-54.8936, 60.2096

■ 219.3700, -1.1684,
1.4295

■ 143.9680,
-61.6092, 67.5571

■ 227.8620, 5.9840,
-6.0180

■ 136.5190,
-67.3039, 74.0898

■ 236.0290, 9.3527,
-13.1804

■ 241.8990, 6.4588,
-18.3284

■ 244.8340, 5.0118,
-20.9024

Harmonies

Analogous

The Analogous color harmony consists of three colors that are next to each other on the color wheel.



188.1940, -20.8016, 45.4339



185.8580, -28.0310, 30.8195



182.9430, -27.0869, 7.9430

Triad

The Triadic color harmony groups three colors that are evenly spaced from another and form a triangle on the color wheel.



185.8580, -28.0310, 30.8195



170.3660, 14.6096, -66.0960



189.8490, 19.3014, 15.9184

Complementary

The Complementary color scheme is a pair of colors which are on the opposite of each other on the color wheel.



185.8580, -28.0310, 30.8195



164.1420, 28.0310, -30.8195

Split Complementary

Split-complementary colors differ from the complementary color scheme. The scheme consists of three colors, the original color and two neighbors of the complement color.



186.3550, 28.4190, -15.2203



185.8580, -28.0310, 30.8195



170.7860, 27.7135, -69.0953

Square

The Square scheme is like the rectangle color scheme, but the four colors are evenly spaced on the color wheel.



185.8580, -28.0310, 30.8195



174.9160, -2.9166, -44.6533



178.6560, 31.7216, -47.9333



191.1480, 5.8430, 39.3352

Rectangle

The Rectangle color scheme consists of four colors that form a rectangle on the color wheel.



185.8580, -28.0310, 30.8195



180.7990, -22.0859, -9.4707



178.6560, 31.7216, -47.9333



189.2930, 22.5336, 5.8820

Sweetspot

The Sweet Spot groups the original color and five complimentary colors.



185.8580, -28.0310, 30.8195



243.2480, -9.4893, 10.3065



161.4100, 5.2209, 52.2604



120.6650, -5.2578, 6.4328



0.0000, 0.0000, 0.0000



128.0000, 0.0000, 0.0000

Same Dimension

The Same Dimension uses a secret algorithm to generate beautiful new colors.



185.8580, -28.0310, 30.8195



206.4760, -38.6887, 42.5555



209.6150, -39.7432, 7.3536



105.8110, -3.3578, 3.6738



106.9050, -52.7042, 57.9653



28.4290, -14.0155, 15.4098

Inverse Universe

The Inverse Universe completely reimagines the original color for something new.



164.1420, 28.0310, -30.8195



176.5240, 38.6887, -42.5555



140.3850, 39.7432, -7.3536



103.1890, 3.3578, -3.6738



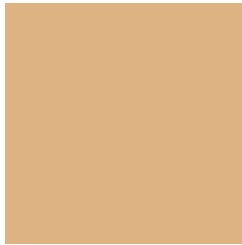
66.0950, 52.7042, -57.9653



17.5710, 14.0155, -15.4098

Previews

White Background



This preview shows how the YUV color 185.8580, -28.0310, 30.8195 looks on a white background.

Color Contrast Check

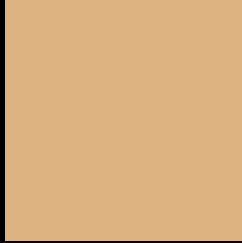
Large Text (above 18pt) WCAG AA × Fail

Any Text WCAG AA × Fail

Large Text (above 18pt) WCAG AAA × Fail

Any Text WCAG AAA × Fail

Black Background



This preview shows how the YUV color 185.8580, -28.0310, 30.8195 looks on a black background.

Color Contrast Check

Large Text (above 18pt) WCAG AA ✓ Pass

Any Text WCAG AA ✓ Pass

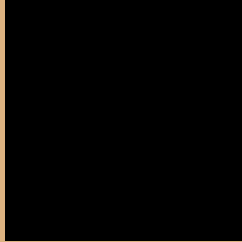
Large Text (above 18pt) WCAG AAA ✓ Pass

Any Text WCAG AAA ✓ Pass

If you want to check with other color combinations, try the [Color Contrast Checker](#).

YUV 185.8580, -28.0310, 30.8195

Background



This preview shows how black text looks on a background with the YUV color 185.8580, -28.0310, 30.8195.

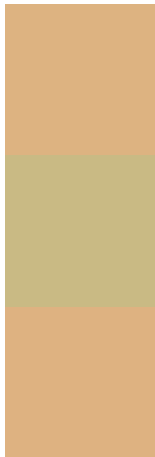


This preview shows how white text looks on a background with the YUV color 185.8580, -28.0310,

Color Blindness Simulation

Color vision deficiency is a very complex topic, and I could not describe the different causes any better than Wikipedia does, so if you want to learn more, you should check out their [article about color blindness](#).

Dichromacy



Original Color

185.8580, -28.0310, 30.8195

Protanopia

184.3290, -25.7982, 14.6205

Deuteranopia

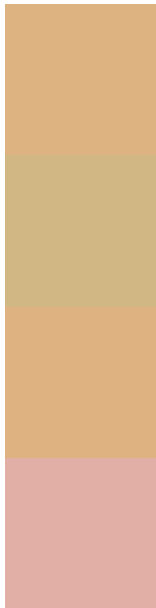
185.5700, -27.8890, 31.9491



Tritanopia

189.9270, -2.4290, 32.5130

Trichromacy



Original Color

185.8580, -28.0310, 30.8195

Protanomaly

184.5470, -26.3987, 20.5683

Deuteranomaly

185.5700, -27.8890, 31.9491

Tritanomaly

188.8100, -11.7383, 31.7386

Monochromacy



Original Color

185.8580, -28.0310, 30.8195

Achromatopsia

186.0000, 0.0000, 0.0000

Achromatomaly

185.7320, -10.2209, 11.6360

CSS Examples

Text

The CSS property to change the color of the text to YUV 185.8580, -28.0310, 30.8195 is called "color". The color property can be set on classes, ids or directly on the HTML element.

This example shows how text in the color `rgb(221, 179, 129)` looks like.

```
.text, #text, p{  
    color:rgb(221, 179, 129)  
}
```

If you want to add a text shadow in that color use the text-shadow property, you can generate a text shadow directly with our [CSS Text Shadow Generator](#).

Here you see how black text with a 4 pixel rgb(221, 179, 129) colored shadow looks like.

```
.shadow{ text-shadow: 4px 4px 2px rgb(221, 179, 129) }
```

Border

The CSS property to change the border of an element to YUV 185.8580, -28.0310, 30.8195 is called "border".

The border property can be set on classes, ids or directly on the HTML element.

This example shows the color as border, it can be applied via the CSS property "border" or "border-color".

```
.border, #border, table{ border:4px solid rgb(221, 179, 129) }
```


If only the border color should be changed use the property `border-color`.

```
.border{ border-color:rgb(221, 179, 129) }
```

If you want to add a box shadow in that color use:

Here you see how a box with a 4 pixel `rgb(221, 179, 129)` colored shadow looks like.

```
.boxshadow{ -moz-box-shadow:4px 4px 4px  
4px rgb(221, 179, 129); -webkit-box-  
shadow:4px 4px 4px 4px rgb(221, 179, 129);  
box-shadow:4px 4px 4px 4px rgb(221, 179,  
129) }
```

Background

The CSS property to change the background color of an element to YUV 185.8580, -28.0310, 30.8195 is called "background". The background property can be set on classes, ids or directly on the HTML element.

```
.background, #background, body{  
background: rgb(221, 179, 129) }
```

If only the background color should be changed can be used:

```
.background{ background-color: rgb(221,  
179, 129) }
```

This example shows the color as background, it is applied via the CSS property "background".

To optimize and compress your CSS code, you can use our [online CSS compressor and optimizer](#) based on csstidy. If you want to create a linear or radial gradient as background or border, check our [CSS Gradient Generator](#).

Hey! You found this booklet interesting? Support Converting Colors with the new Membership Option!

The pro membership hides all ads, plus gives you double the colors in the color bucket, and more awesome pro features!

[Learn more, Memberships starting at \\$2.50/m!](#)

**Follow me
on Twitter!**

@ConvertingColor