

Converting Colors

YUV(186.0190, -5.4324,
15.7693)

Have a look what the booklet for
YUV(186.0190, -5.4324, 15.7693)
contains.

YUV(186.0190, -5.4324, 15.7693)	3
<i>Conversions</i>	4
<i>Details</i>	6
<i>Harmonies</i>	12
<i>Previews</i>	24
<i>Color Blindness Simulation</i>	28
<i>CSS Examples</i>	31

Color

**YUV(186.0190, -5.4324,
15.7693)**

Conversions

Conversions Part 1

Format	Color
Hex	CCB3AF
RGB	204, 179, 175
RGB Percent	80%, 70%, 69%
CMY	0.2000, 0.2980, 0.3137
CMYK	0.00, 0.12, 0.14, 0.20
HSL	8°, 22%, 74%
HSV	8°, 14%, 80%
XYZ	48.7598, 48.1727, 47.2858
YIQ	186.0190, 16.1840, 4.0560

Conversions

Conversions Part 2

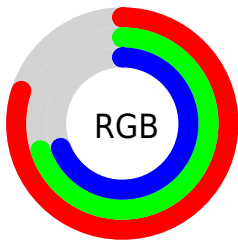
Format	Color
RYB	204, 180, 175
Decimal	13415343
CIELab	74.93, 8.31, 5.33
CIELCh	75, 9.867, 32.669
Yxy	48.1727, 0.3381, 0.3340
Android (android.graphics.Color)	4291605423 (0xFFCCB3AF)
YUV	186.0190, -5.4324, 15.7693
Hunter-Lab	69.4066, 3.9391, 8.1911

Details

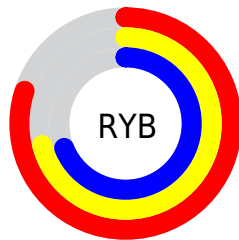
The YUV color $186.0190, -5.4324, 15.7693$ is a light color, and the websafe version is hex `CCCCCC`. A complement of this color would be $192.9810, 5.4324, -15.7693$, and the grayscale version is $186.0000, 0.0000, 0.0000$.

A 20% lighter version of the original color is $240.4100, -5.1321, 12.7954$, and $132.8340, -4.8482, 15.0546$ is the 20% darker color. If you saturate the color by 10%, you get $173.1730, -8.9593, 27.0353$, and if you desaturate by 10%, it is $198.8650, -1.9054, 4.5034$.

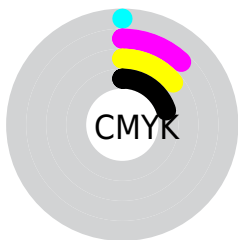
Distribution



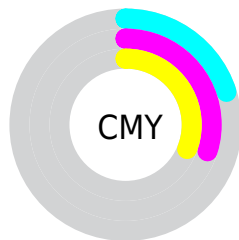
- Red (80%)
- Green (70%)
- Blue (69%)



- Red (80%)
- Yellow (71%)
- Blue (69%)



- Cyan (0%)
- Magenta (12%)
- Yellow (14%)
- Black (20%)



- Cyan (20%)
- Magenta (30%)
- Yellow (31%)

Brightness & Saturation Gradients

These gradients show how the YUV color 186.0190, -5.4324, 15.7693 changes by changing the brightness by 10 percent. The first figure shows a shift by +10% for each color and the second figure -10%.

Similar to the brightness gradients but the following saturation gradients show a change of the YUV color 186.0190, -5.4324, 15.7693 by changing the saturation by 10% instead.

■ 186.0190, -5.4324,
15.7693

■ 186.0190, -5.4324,
15.7693

255.0000, 0.0000,
0.0000

■ 158.7200, -5.2850,
15.1546

■ 240.4100, -5.1321,
12.7954

■ 132.8340, -4.8482,
15.0546

■ 107.5350, -4.7008,
14.4398

■ 82.9370, -4.4059,
13.2103

■ 59.6380, -4.2585,
12.5955

■ 38.0400, -3.9637,
11.3659

■ 16.2960, -5.5689,

12.8954

■ 0.0000, 0.0000,
0.0000

■ 186.0190, -5.4324,
15.7693

■ 186.0190, -5.4324,
15.7693

■ 173.1730, -8.9593,
27.0353

■ 198.8650, -1.9054,
4.5034

■ 160.8000,
-13.2124, 37.8864

■ 211.2380, 2.3477,
-6.3477

■ 147.9540,
-16.7393, 49.1523

■ 224.0840, 5.8746,
-17.6137

■ 135.5810,
-20.9924, 60.0035

■ 236.2290, 9.2541,
-28.2648

■ 122.7350,
-24.5194, 71.2694

■ 239.7510, 7.5178,
-31.3536

■ 109.8890,
-28.0463, 82.5353

■ 97.5160, -32.2994,
93.3865

■ 84.6700, -35.8263,
104.6524

■ 77.4320, -38.1740,
111.0001

Harmonies

Analogous

The Analogous color harmony consists of three colors that are next to each other on the color wheel.



186.1590, -1.0644, 14.7696



186.0190, -5.4324, 15.7693



185.3130, -8.0423, 12.8805

Triad

The Triadic color harmony groups three colors that are evenly spaced from another and form a triangle on the color wheel.



186.0190, -5.4324, 15.7693



182.1360, -3.0250, -9.7663



184.2470, 8.7522, -7.2326

Complementary

The Complementary color scheme is a pair of colors which are on the opposite of each other on the color wheel.



186.0190, -5.4324, 15.7693



192.9810, 5.4324, -15.7693

Split Complementary

Split-complementary colors differ from the complementary color scheme. The scheme consists of three colors, the original color and two neighbors of the complement color.



183.0890, 8.3371, -14.1101



186.0190, -5.4324, 15.7693



181.6560, 1.6486, -15.4843

Square

The Square scheme is like the rectangle color scheme, but the four colors are evenly spaced on the color wheel.



186.0190, -5.4324, 15.7693



183.1540, -6.9779, -1.8891



181.4970, 6.1640, -17.0989



185.5470, 7.1253, 1.2743

Rectangle

The Rectangle color scheme consists of four colors that form a rectangle on the color wheel.



186.0190, -5.4324, 15.7693



184.4650, -8.6102, 8.3622



181.4970, 6.1640, -17.0989



183.9370, 8.9051, -9.5917

Sweetspot

The Sweet Spot groups the original color and five complimentary colors.



186.0190, -5.4324, 15.7693



248.5770, -1.7635, 5.6330



186.5210, 6.6451, 15.3291



123.6800, -1.3212, 3.7886



0.0000, 0.0000, 0.0000



128.0000, 0.0000, 0.0000

Same Dimension

The Same Dimension uses a secret algorithm to generate beautiful new colors.



186.0190, -5.4324, 15.7693



228.3790, -8.0748, 23.3466



194.2370, -9.4838, 8.5622



95.5770, -1.7635, 5.6330



63.1350, -31.1256, 90.2126



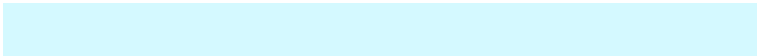
14.2970, -7.0484, 20.7875

Inverse Universe

The Inverse Universe completely reimagines the original color for something new.



192.9810, 5.4324, -15.7693



238.6210, 8.0748, -23.3466



184.7630, 9.4838, -8.5622



98.4230, 1.7635, -5.6330



102.8650, 31.1256, -90.2126



23.7030, 7.0484, -20.7875

Previews

White Background



This preview shows how the YUV color 186.0190, -5.4324, 15.7693 looks on a white background.

Color Contrast Check

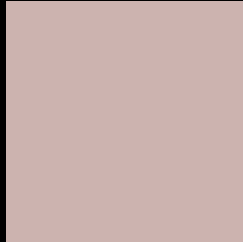
Large Text (above 18pt) WCAG AA × Fail

Any Text WCAG AA × Fail

Large Text (above 18pt) WCAG AAA × Fail

Any Text WCAG AAA × Fail

Black Background



This preview shows how the YUV color 186.0190, -5.4324, 15.7693 looks on a black background.

Color Contrast Check

Large Text (above 18pt) WCAG AA ✓ Pass

Any Text WCAG AA ✓ Pass

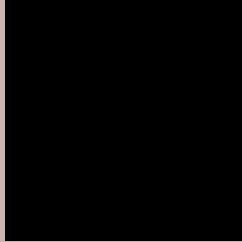
Large Text (above 18pt) WCAG AAA ✓ Pass

Any Text WCAG AAA ✓ Pass

If you want to check with other color combinations, try the [Color Contrast Checker](#).

YUV 186.0190, -5.4324, 15.7693

Background



This preview shows how black text looks on a background with the YUV color 186.0190, -5.4324, 15.7693.



This preview shows how white text looks on a background with the YUV color 186.0190, -5.4324,

15.7693.

Color Blindness Simulation

Color vision deficiency is a very complex topic, and I could not describe the different causes any better than Wikipedia does, so if you want to learn more, you should check out their [article about color blindness](#).

Dichromacy



Original Color

186.0190, -5.4324, 15.7693

Protanopia

184.8110, -3.3578, 3.6738

Deuteranopia

186.0300, -5.4378, 17.5137



Tritanopia

187.1530, 1.4036, 16.5288

Trichromacy



Original Color

186.0190, -5.4324, 15.7693

Protanomaly

185.0180, -3.9529, 7.8772

Deuteranomaly

185.7310, -5.2904, 16.8989

Tritanomaly

186.8710, -0.9224, 15.8991

Monochromacy



Original Color

186.0190, -5.4324, 15.7693

Achromatopsia

186.0000, 0.0000, 0.0000

Achromatomaly

185.8760, -1.9109, 6.2477

CSS Examples

Text

The CSS property to change the color of the text to YUV 186.0190, -5.4324, 15.7693 is called "color". The color property can be set on classes, ids or directly on the HTML element.

This example shows how text in the color `rgb(204, 179, 175)` looks like.

```
.text, #text, p{  
    color:rgb(204, 179, 175)  
}
```

If you want to add a text shadow in that color use the text-shadow property, you can generate a text shadow directly with our [CSS Text Shadow Generator](#).

Here you see how black text with a 4 pixel rgb(204, 179, 175) colored shadow looks like.

```
.shadow{ text-shadow: 4px 4px 2px rgb(204, 179, 175) }
```

Border

The CSS property to change the border of an element to YUV 186.0190, -5.4324, 15.7693 is called "border". The border property can be set on classes, ids or directly on the HTML element.

This example shows the color as border, it can be applied via the CSS property "border" or "border-color".

```
.border, #border, table{ border:4px solid rgb(204, 179, 175) }
```


If only the border color should be changed use the property `border-color`.

```
.border{ border-color:rgb(204, 179, 175) }
```

If you want to add a box shadow in that color use:

Here you see how a box with a 4 pixel `rgb(204, 179, 175)` colored shadow looks like.

```
.boxshadow{ -moz-box-shadow:4px 4px 4px  
4px rgb(204, 179, 175); -webkit-box-  
shadow:4px 4px 4px 4px rgb(204, 179, 175);  
box-shadow:4px 4px 4px 4px rgb(204, 179,  
175) }
```

Background

The CSS property to change the background color of an element to YUV 186.0190, -5.4324, 15.7693 is called "background". The background property can be set on classes, ids or directly on the HTML element.

```
.background, #background, body{  
background: rgb(204, 179, 175) }
```

If only the background color should be changed can be used:

```
.background{ background-color: rgb(204,  
179, 175) }
```

This example shows the color as background, it is applied via the CSS property "background".

To optimize and compress your CSS code, you can use our [online CSS compressor and optimizer](#) based on csstidy. If you want to create a linear or radial gradient as background or border, check our [CSS Gradient Generator](#).

Hey! You found this booklet interesting? Support Converting Colors with the new Membership Option!

The pro membership hides all ads, plus gives you double the colors in the color bucket, and more awesome pro features!

[Learn more, Memberships starting at \\$2.50/m!](#)

**Follow me
on Twitter!**

@ConvertingColor