

Converting Colors

YUV(186.0740, -22.2215,
34.1381)

Have a look what the booklet for
YUV(186.0740, -22.2215, 34.1381)
contains.

YUV(186.0740, -22.2215, 34.1381)	3
<i>Conversions</i>	4
<i>Details</i>	6
<i>Harmonies</i>	12
<i>Previews</i>	24
<i>Color Blindness Simulation</i>	28
<i>CSS Examples</i>	31

Color

**YUV(186.0740, -22.2215,
34.1381)**

Conversions

Conversions Part 1

Format	Color
Hex	E1AF8D
RGB	225, 175, 141
RGB Percent	88%, 69%, 55%
CMY	0.1176, 0.3137, 0.4471
CMYK	0.00, 0.22, 0.37, 0.12
HSL	24°, 58%, 72%
HSV	24°, 37%, 88%
XYZ	51.1890, 48.5906, 31.8803
YIQ	186.0740, 40.7140, 0.0260

Conversions

Conversions Part 2

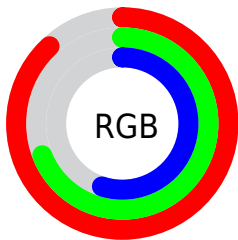
Format	Color
R _Y B	225, 198, 141
Decimal	14790541
CIE Lab	75.20, 13.72, 24.43
CIE LCh	75, 28.016, 60.687
Yxy	48.5906, 0.3888, 0.3691
Android (android.graphics.Color)	4292980621 (0xFFE1AF8D)
YUV	186.0740, -22.2215, 34.1381
Hunter-Lab	69.7069, 9.0936, 21.6788

Details

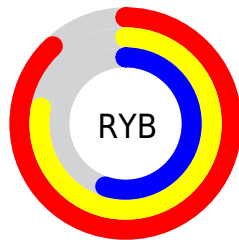
The YUV color **186.0740, -22.2215, 34.1381** is a light color, and the websafe version is hex **CC9966**. A complement of this color would be **179.9260, 22.2215, -34.1381**, and the grayscale version is **186.0000, 0.0000, 0.0000**.

A 20% lighter version of the original color is **234.0720, -19.2625, 18.3539**, and **132.2200, -20.3215, 31.3791** is the 20% darker color. If you saturate the color by 10%, you get **175.9350, -28.0690, 43.0300**, and if you desaturate by 10%, it is **196.3270, -15.9372, 25.1462**.

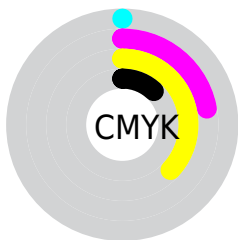
Distribution



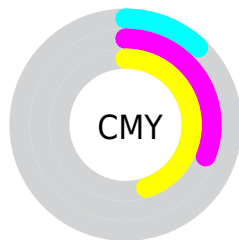
- Red (88%)
- Green (69%)
- Blue (55%)



- Red (88%)
- Yellow (78%)
- Blue (55%)



- Cyan (0%)
- Magenta (22%)
- Yellow (37%)
- Black (12%)



- Cyan (12%)
- Magenta (31%)
- Yellow (45%)

Brightness & Saturation Gradients

These gradients show how the YUV color 186.0740, -22.2215, 34.1381 changes by changing the brightness by 10 percent. The first figure shows a shift by +10% for each color and the second figure -10%.

Similar to the brightness gradients but the following saturation gradients show a change of the YUV color 186.0740, -22.2215, 34.1381 by changing the saturation by 10% instead.

186.0740,
-22.2215, 34.1381

186.0740,
-22.2215, 34.1381

255.0000, 0.0000,
0.0000

158.5900,
-21.4899, 32.8086

234.0720,
-19.2625, 18.3539

132.2200,
-20.3215, 31.3791

251.3520,
-13.9775, 3.1993

107.3230,
-19.8792, 29.5347

254.5440, -1.7472,
0.3999

82.5400, -19.0002,
27.5904

58.8710, -17.6844,
25.5461

35.8600, -17.6790,
23.8018

15.4710, -7.6272,

19.7579

■ 0.0000, 0.0000,
0.0000

■ 186.0740,
-22.2215, 34.1381

■ 186.0740,
-22.2215, 34.1381

■ 175.9350,
-28.0690, 43.0300

■ 196.3270,
-15.9372, 25.1462

■ 165.0950,
-34.0638, 52.5367

■ 207.0530,
-10.3791, 15.7395

■ 154.9560,
-39.9113, 61.4286

■ 217.3060, -4.0949,
6.7476

■ 144.1160,
-45.9062, 70.9353

■ 228.0320, 1.4632,
-2.6591

■ 133.9770,
-51.7537, 79.8272

■ 238.2850, 7.7475,
-11.6509

■ 123.7240,
-58.0379, 88.8191

■ 246.0300, 4.4222,
-18.4433

■ 120.6920,
-59.5012, 91.4781

Harmonies

Analogous

The Analogous color harmony consists of three colors that are next to each other on the color wheel.



187.7190, -13.6655, 43.2194



186.0740, -22.2215, 34.1381



183.9810, -24.6406, 16.6797

Triad

The Triadic color harmony groups three colors that are evenly spaced from another and form a triangle on the color wheel.



186.0740, -22.2215, 34.1381



174.3700, 5.2406, -47.6825



187.4020, 20.5078, 2.2784

Complementary

The Complementary color scheme is a pair of colors which are on the opposite of each other on the color wheel.



186.0740, -22.2215, 34.1381



179.9260, 22.2215, -34.1381

Split Complementary

Split-complementary colors differ from the complementary color scheme. The scheme consists of three colors, the original color and two neighbors of the complement color.



182.7190, 26.2675, -25.1866



186.0740, -22.2215, 34.1381



173.1590, 18.6556, -57.1444

Square

The Square scheme is like the rectangle color scheme, but the four colors are evenly spaced on the color wheel.



186.0740, -22.2215, 34.1381



177.4190, -9.0806, -27.5545



176.7500, 25.7592, -48.8927



189.3250, 10.6858, 26.0250

Rectangle

The Rectangle color scheme consists of four colors that form a rectangle on the color wheel.



186.0740, -22.2215, 34.1381



181.8760, -22.1239, 2.7397



176.7500, 25.7592, -48.8927



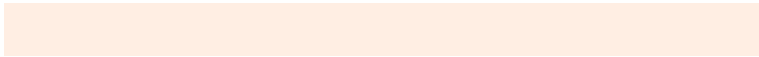
186.0310, 23.1557, -7.0432

Sweetspot

The Sweet Spot groups the original color and five complimentary colors.



186.0740, -22.2215, 34.1381



241.8290, -7.3107, 11.5510



171.8160, 9.4577, 46.6424



120.1920, -4.5317, 6.8476



0.0000, 0.0000, 0.0000



128.0000, 0.0000, 0.0000

Same Dimension

The Same Dimension uses a secret algorithm to generate beautiful new colors.



186.0740, -22.2215, 34.1381



201.9740, -30.5532, 46.5038



210.7280, -34.3759, 12.5165



107.2240, -3.0684, 4.1886



94.3010, -46.4904, 71.6500



26.0920, -12.8634, 19.2133

Inverse Universe

The Inverse Universe completely reimagines the original color for something new.



179.9260, 22.2215, -34.1381



193.6130, 30.2638, -47.0186



155.2720, 34.3759, -12.5165



106.3630, 2.7790, -4.7034



81.6990, 46.4904, -71.6500



22.4950, 12.5740, -19.7281

Previews

White Background



This preview shows how the YUV color 186.0740, -22.2215, 34.1381 looks on a white background.

Color Contrast Check

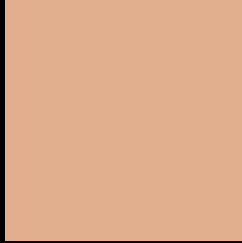
Large Text (above 18pt) WCAG AA × Fail

Any Text WCAG AA × Fail

Large Text (above 18pt) WCAG AAA × Fail

Any Text WCAG AAA × Fail

Black Background



This preview shows how the YUV color 186.0740, -22.2215, 34.1381 looks on a black background.

Color Contrast Check

Large Text (above 18pt) WCAG AA ✓ Pass

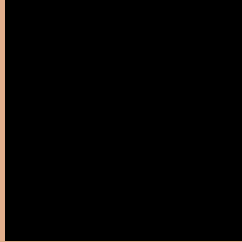
Any Text WCAG AA ✓ Pass

Large Text (above 18pt) WCAG AAA ✓ Pass

Any Text WCAG AAA ✓ Pass

If you want to check with other color combinations, try the [Color Contrast Checker](#).

YUV 186.0740, -22.2215, 34.1381 Background



This preview shows how black text looks on a background with the YUV color 186.0740, -22.2215, 34.1381.



This preview shows how white text looks on a background with the YUV color 186.0740, -22.2215, 34.1381.

Color Blindness Simulation

Color vision deficiency is a very complex topic, and I could not describe the different causes any better than Wikipedia does, so if you want to learn more, you should check out their [article about color blindness](#).

Dichromacy



Original Color

186.0740, -22.2215, 34.1381

Protanopia

184.1420, -18.8040, 11.2765

Deuteranopia

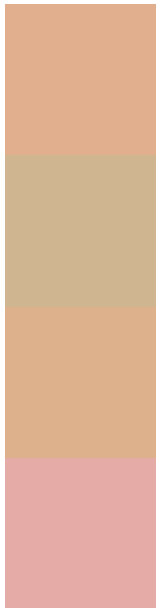
185.6280, -22.4946, 28.3902



Tritanopia

188.4220, -3.1660, 35.5869

Trichromacy



Original Color

186.0740, -22.2215, 34.1381

Protanomaly

184.5560, -19.9941, 19.6834

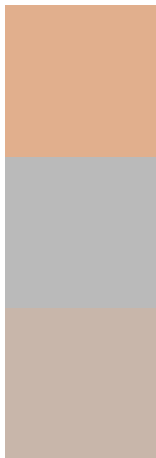
Deuteranomaly

185.9380, -22.6474, 30.7494

Tritanomaly

187.5870, -10.1494, 35.4422

Monochromacy



Original Color

186.0740, -22.2215, 34.1381

Achromatopsia

186.0000, 0.0000, 0.0000

Achromatomaly

186.0140, -7.8949, 12.2657

CSS Examples

Text

The CSS property to change the color of the text to YUV 186.0740, -22.2215, 34.1381 is called "color". The color property can be set on classes, ids or directly on the HTML element.

This example shows how text in the color `rgb(225, 175, 141)` looks like.

```
.text, #text, p{  
    color:rgb(225, 175, 141)  
}
```

If you want to add a text shadow in that color use the text-shadow property, you can generate a text shadow directly with our [CSS Text Shadow Generator](#).

Here you see how black text with a 4 pixel rgb(225, 175, 141) colored shadow looks like.

```
.shadow{ text-shadow: 4px 4px 2px rgb(225, 175, 141) }
```

Border

The CSS property to change the border of an element to YUV 186.0740, -22.2215, 34.1381 is called "border".

The border property can be set on classes, ids or directly on the HTML element.

This example shows the color as border, it can be applied via the CSS property "border" or "border-color".

```
.border, #border, table{ border:4px solid rgb(225, 175, 141) }
```


If only the border color should be changed use the property `border-color`.

```
.border{ border-color:rgb(225, 175, 141) }
```

If you want to add a box shadow in that color use:

Here you see how a box with a 4 pixel `rgb(225, 175, 141)` colored shadow looks like.

```
.boxshadow{ -moz-box-shadow:4px 4px 4px  
4px rgb(225, 175, 141); -webkit-box-  
shadow:4px 4px 4px 4px rgb(225, 175, 141);  
box-shadow:4px 4px 4px 4px rgb(225, 175,  
141) }
```

Background

The CSS property to change the background color of an element to YUV 186.0740, -22.2215, 34.1381 is called "background". The background property can be set on classes, ids or directly on the HTML element.

```
.background, #background, body{  
background: rgb(225, 175, 141) }
```

If only the background color should be changed can be used:

```
.background{ background-color: rgb(225,  
175, 141) }
```

This example shows the color as background, it is applied via the CSS property "background".

To optimize and compress your CSS code, you can use our [online CSS compressor and optimizer](#) based on csstidy. If you want to create a linear or radial gradient as background or border, check our [CSS Gradient Generator](#).

Hey! You found this booklet interesting? Support Converting Colors with the new Membership Option!

The pro membership hides all ads, plus gives you double the colors in the color bucket, and more awesome pro features!

[Learn more, Memberships starting at \\$2.50/m!](#)

**Follow me
on Twitter!**

@ConvertingColor