

Converting Colors

YUV(186.1680, -11.4218,
23.5317)

Have a look what the booklet for
YUV(186.1680, -11.4218, 23.5317)
contains.

YUV(186.1680, -11.4218, 23.5317)	3
<i>Conversions</i>	4
<i>Details</i>	6
<i>Harmonies</i>	12
<i>Previews</i>	24
<i>Color Blindness Simulation</i>	28
<i>CSS Examples</i>	31

Color

**YUV(186.1680, -11.4218,
23.5317)**

Conversions

Conversions Part 1

Format	Color
Hex	D5B1A3
RGB	213, 177, 163
RGB Percent	84%, 69%, 64%
CMY	0.1647, 0.3059, 0.3608
CMYK	0.00, 0.17, 0.23, 0.16
HSL	17°, 37%, 74%
HSV	17°, 23%, 84%
XYZ	49.7736, 48.2348, 41.3372
YIQ	186.1680, 25.9500, 3.2780

Conversions

Conversions Part 2

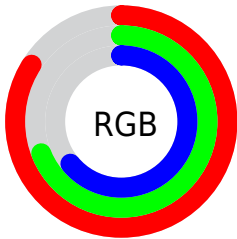
Format	Color
RYB	213, 182, 163
Decimal	14004643
CIELab	74.97, 10.89, 12.03
CIELCh	75, 16.230, 47.842
Yxy	48.2348, 0.3572, 0.3462
Android (android.graphics.Color)	4292194723 (0xFFD5B1A3)
YUV	186.1680, -11.4218, 23.5317
Hunter-Lab	69.4512, 6.3858, 13.3266

Details

The YUV color $186.1680, -11.4218, 23.5317$ is a light color, and the websafe version is hex $CC9999$. A complement of this color would be $189.8320, 11.4218, -23.5317$, and the grayscale version is $186.0000, 0.0000, 0.0000$.

A 20% lighter version of the original color is $237.8680, -9.7949, 15.0248$, and $132.6840, -10.6902, 22.2021$ is the 20% darker color. If you saturate the color by 10%, you get $174.9690, -16.2537, 33.3532$, and if you desaturate by 10%, it is $197.3670, -6.5899, 13.7101$.

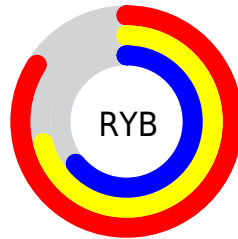
Distribution



Red (84%)

Green (69%)

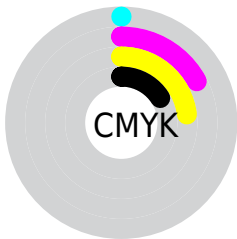
Blue (64%)



Red (84%)

Yellow (71%)

Blue (64%)

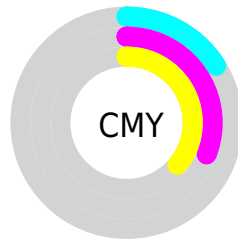


Cyan (0%)

Magenta (17%)

Yellow (23%)

Black (16%)



Cyan (16%)

Magenta (31%)

Yellow (36%)

Brightness & Saturation Gradients

These gradients show how the YUV color 186.1680, -11.4218, 23.5317 changes by changing the brightness by 10 percent. The first figure shows a shift by +10% for each color and the second figure -10%.

Similar to the brightness gradients but the following saturation gradients show a change of the YUV color 186.1680, -11.4218, 23.5317 by changing the saturation by 10% instead.

■ 186.1680,
-11.4218, 23.5317

■ 186.1680,
-11.4218, 23.5317

255.0000, 0.0000,
0.0000

■ 158.9830,
-10.8376, 22.8169

■ 237.8680, -9.7949,
15.0248

■ 132.6840,
-10.6902, 22.2021

■ 253.9740, -3.9312,
0.8998

■ 107.2000, -9.9586,
20.8726

■ 82.7160, -9.2270,
19.5431

■ 59.8190, -8.7848,
17.6987

■ 37.3350, -8.0532,
16.3692

■ 15.7480, -7.7638,

16.8840

■ 0.0000, 0.0000,
0.0000

■ 186.1680,
-11.4218, 23.5317

■ 186.1680,
-11.4218, 23.5317

■ 174.9690,
-16.2537, 33.3532

■ 197.3670, -6.5899,
13.7101

■ 163.0690,
-21.2330, 43.7895

■ 209.2670, -1.6106,
3.2738

■ 151.8700,
-26.0649, 53.6110

■ 220.4660, 3.2213,
-6.5477

■ 140.6710,
-30.8968, 63.4325

■ 231.6650, 8.0532,
-16.3692

■ 128.7710,
-35.8761, 73.8688

■ 241.8550, 6.4805,
-25.3058

■ 117.5720,
-40.7080, 83.6904

■ 242.4420, 6.1911,
-25.8206

■ 106.3730,
-45.5399, 93.5119

■ 98.9070, -48.7612,
100.0596

Harmonies

Analogous

The Analogous color harmony consists of three colors that are next to each other on the color wheel.



186.7860, -5.3175, 25.6207



186.1680, -11.4218, 23.5317



184.4290, -14.0155, 15.4098

Triad

The Triadic color harmony groups three colors that are evenly spaced from another and form a triangle on the color wheel.



186.1680, -11.4218, 23.5317



179.9280, -0.9505, -21.8619



185.5230, 13.5462, -4.8437

Complementary

The Complementary color scheme is a pair of colors which are on the opposite of each other on the color wheel.



186.1680, -11.4218, 23.5317



189.8320, 11.4218, -23.5317

Split Complementary

Split-complementary colors differ from the complementary color scheme. The scheme consists of three colors, the original color and two neighbors of the complement color.



182.7770, 14.8999, -19.0984



186.1680, -11.4218, 23.5317



178.9470, 6.9281, -28.8945

Square

The Square scheme is like the rectangle color scheme, but the four colors are evenly spaced on the color wheel.



186.1680, -11.4218, 23.5317



181.0560, -8.4086, -9.6961



179.8530, 12.8905, -27.9351



187.0580, 8.8454, 9.5961

Rectangle

The Rectangle color scheme consists of four colors that form a rectangle on the color wheel.



186.1680, -11.4218, 23.5317



183.6730, -14.1358, 7.3028



179.8530, 12.8905, -27.9351



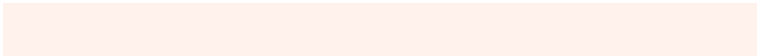
184.1310, 14.7254, -9.7619

Sweetspot

The Sweet Spot groups the original color and five complimentary colors.



186.1680, -11.4218, 23.5317



245.3170, -4.1003, 8.4920



182.1680, 8.7912, 27.0397



122.0500, -2.4896, 5.2182



0.0000, 0.0000, 0.0000



128.0000, 0.0000, 0.0000

Same Dimension

The Same Dimension uses a secret algorithm to generate beautiful new colors.



186.1680, -11.4218, 23.5317



216.9690, -16.2537, 33.3532



200.2560, -18.3672, 11.1765



101.0500, -2.4896, 5.2182



79.3050, -39.0974, 80.4165



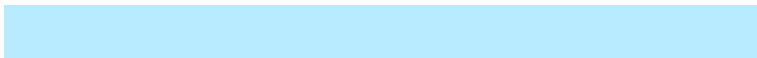
19.9010, -9.8112, 20.2578

Inverse Universe

The Inverse Universe completely reimagines the original color for something new.



189.8320, 11.4218, -23.5317



222.0310, 16.2537, -33.3532



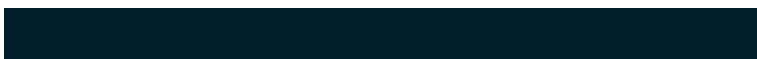
175.7440, 18.3672, -11.1765



101.9500, 2.4897, -5.2181



91.6950, 39.0974, -80.4165



23.0990, 9.8112, -20.2578

Previews

White Background



This preview shows how the YUV color 186.1680, -11.4218, 23.5317 looks on a white background.

Color Contrast Check

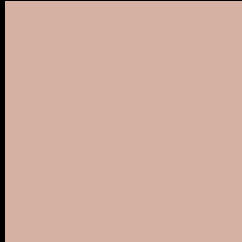
Large Text (above 18pt) WCAG AA × Fail

Any Text WCAG AA × Fail

Large Text (above 18pt) WCAG AAA × Fail

Any Text WCAG AAA × Fail

Black Background



This preview shows how the YUV color 186.1680, -11.4218, 23.5317 looks on a black background.

Color Contrast Check

Large Text (above 18pt) WCAG AA ✓ Pass

Any Text WCAG AA ✓ Pass

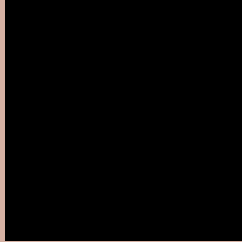
Large Text (above 18pt) WCAG AAA ✓ Pass

Any Text WCAG AAA ✓ Pass

If you want to check with other color combinations, try the [Color Contrast Checker](#).

YUV 186.1680, -11.4218, 23.5317

Background



This preview shows how black text looks on a background with the YUV color 186.1680, -11.4218, 23.5317.



This preview shows how white text looks on a background with the YUV color 186.1680, -11.4218, 23.5317.

Color Blindness Simulation

Color vision deficiency is a very complex topic, and I could not describe the different causes any better than Wikipedia does, so if you want to learn more, you should check out their [article about color blindness](#).

Dichromacy



Original Color

186.1680, -11.4218, 23.5317

Protanopia

184.4540, -8.6048, 6.6178

Deuteranopia

186.1570, -11.4164, 21.7873



Tritanopia

187.4530, -0.2233, 25.0357

Trichromacy



Original Color

186.1680, -11.4218, 23.5317

Protanomaly

184.9710, -9.3527, 13.1804

Deuteranomaly

186.4560, -11.5638, 22.4021

Tritanomaly

186.7150, -4.2965, 24.8059

Monochromacy



Original Color

186.1680, -11.4218, 23.5317

Achromatopsia

186.0000, 0.0000, 0.0000

Achromatomaly

186.3170, -4.1003, 8.4920

CSS Examples

Text

The CSS property to change the color of the text to YUV 186.1680, -11.4218, 23.5317 is called "color". The color property can be set on classes, ids or directly on the HTML element.

This example shows how text in the color `rgb(213, 177, 163)` looks like.

```
.text, #text, p{  
    color:rgb(213, 177, 163)  
}
```

If you want to add a text shadow in that color use the text-shadow property, you can generate a text shadow directly with our [CSS Text Shadow Generator](#).

Here you see how black text with a 4 pixel rgb(213, 177, 163) colored shadow looks like.

```
.shadow{ text-shadow: 4px 4px 2px rgb(213, 177, 163) }
```

Border

The CSS property to change the border of an element to YUV 186.1680, -11.4218, 23.5317 is called "border".

The border property can be set on classes, ids or directly on the HTML element.

This example shows the color as border, it can be applied via the CSS property "border" or "border-color".

```
.border, #border, table{ border:4px solid rgb(213, 177, 163) }
```


If only the border color should be changed use the property `border-color`.

```
.border{ border-color:rgb(213, 177, 163) }
```

If you want to add a box shadow in that color use:

Here you see how a box with a 4 pixel `rgb(213, 177, 163)` colored shadow looks like.

```
.boxshadow{ -moz-box-shadow:4px 4px 4px  
4px rgb(213, 177, 163); -webkit-box-  
shadow:4px 4px 4px 4px rgb(213, 177, 163);  
box-shadow:4px 4px 4px 4px rgb(213, 177,  
163) }
```

Background

The CSS property to change the background color of an element to YUV 186.1680, -11.4218, 23.5317 is called "background". The background property can be set on classes, ids or directly on the HTML element.

```
.background, #background, body{  
background: rgb(213, 177, 163) }
```

If only the background color should be changed can be used:

```
.background{ background-color: rgb(213,  
177, 163) }
```

This example shows the color as background, it is applied via the CSS property "background".

To optimize and compress your CSS code, you can use our [online CSS compressor and optimizer](#) based on csstidy. If you want to create a linear or radial gradient as background or border, check our [CSS Gradient Generator](#).

Hey! You found this booklet interesting? Support Converting Colors with the new Membership Option!

The pro membership hides all ads, plus gives you double the colors in the color bucket, and more awesome pro features!

[Learn more, Memberships starting at \\$2.50/m!](#)

**Follow me
on Twitter!**

@ConvertingColor