

Converting Colors

YUV(186.4360, -1.2009,
11.8956)

Have a look what the booklet for
YUV(186.4360, -1.2009, 11.8956)
contains.

YUV(186.4360, -1.2009, 11.8956)	3
<i>Conversions</i>	4
<i>Details</i>	6
<i>Harmonies</i>	12
<i>Previews</i>	24
<i>Color Blindness Simulation</i>	28
<i>CSS Examples</i>	31

Color

**YUV(186.4360, -1.2009,
11.8956)**

Conversions

Conversions Part 1

Format	Color
Hex	C8B4B8
RGB	200, 180, 184
RGB Percent	78%, 71%, 72%
CMY	0.2157, 0.2941, 0.2784
CMYK	0.00, 0.10, 0.08, 0.22
HSL	348°, 15%, 75%
HSV	348°, 10%, 78%
XYZ	48.7924, 48.3826, 52.1145
YIQ	186.4360, 10.6360, 5.4840

Conversions

Conversions Part 2

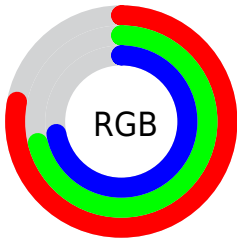
Format	Color
R _Y B	200, 180, 184
Decimal	13153464
CIE Lab	75.07, 7.83, 0.56
CIE LCh	75, 7.848, 4.123
Yxy	48.3826, 0.3268, 0.3241
Android (android.graphics.Color)	4291343544 (0xFFC8B4B8)
YUV	186.4360, -1.2009, 11.8956
Hunter-Lab	69.5576, 3.4862, 4.2685

Details

The YUV color $186.4360, -1.2009, 11.8956$ is a light color, and the websafe version is hex `CCCCCC`. A complement of this color would be $193.5640, 1.2009, -11.8956$, and the grayscale version is $186.0000, 0.0000, 0.0000$.

A 20% lighter version of the original color is $242.1370, -1.0535, 11.2809$, and $133.1370, -1.0535, 11.2809$ is the 20% darker color. If you saturate the color by 10%, you get $172.8720, -2.4019, 23.7913$, and if you desaturate by 10%, it is $200.0000, 0.0000, 0.0000$.

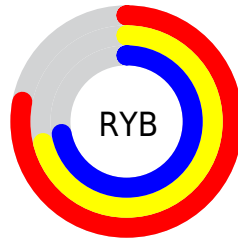
Distribution



Red (78%)

Green (71%)

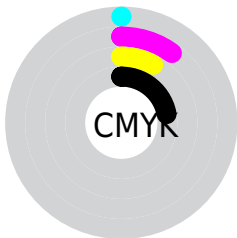
Blue (72%)



Red (78%)

Yellow (71%)

Blue (72%)

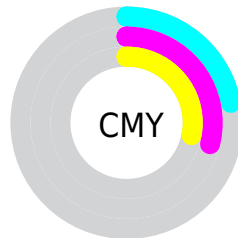


Cyan (0%)

Magenta (10%)

Yellow (8%)

Black (22%)



Cyan (22%)

Magenta (29%)

Yellow (28%)

Brightness & Saturation Gradients

These gradients show how the YUV color 186.4360, -1.2009, 11.8956 changes by changing the brightness by 10 percent. The first figure shows a shift by +10% for each color and the second figure -10%.

Similar to the brightness gradients but the following saturation gradients show a change of the YUV color 186.4360, -1.2009, 11.8956 by changing the saturation by 10% instead.

■ 186.4360, -1.2009,
11.8956

■ 186.4360, -1.2009,
11.8956

255.0000, 0.0000,
0.0000

■ 159.4360, -1.2009,
11.8956

■ 242.1370, -1.0535,
11.2809

■ 133.1370, -1.0535,
11.2809

■ 107.8380, -0.9061,
10.6661

■ 83.5390, -0.7587,
10.0513

■ 60.2400, -0.6113,
9.4365

■ 38.8270, -0.9007,
8.9217

■ 17.5390, -0.7587,

10.0513

0.0000, 0.0000,
0.0000

186.4360, -1.2009,
11.8956

186.4360, -1.2009,
11.8956

172.8720, -2.4019,
23.7913

200.0000, 0.0000,
0.0000

159.3080, -3.6028,
35.6869

213.5640, 1.2009,
-11.8956

145.7440, -4.8038,
47.5825

227.1280, 2.4019,
-23.7913

132.1800, -6.0047,
59.4781

237.7570, 5.0498,
-33.1129

118.6160, -7.2057,
71.3738

238.5550, 8.1074,
-33.8127

■ 105.0520, -8.4066,
83.2694

■ 91.4880, -9.6076,
95.1650

■ 77.9240, -10.8085,
107.0607

■ 64.3600, -12.0095,
118.9563

Harmonies

Analogous

The Analogous color harmony consists of three colors that are next to each other on the color wheel.



186.3260, 2.3043, 7.6071



186.4360, -1.2009, 11.8956



186.2250, -4.5479, 12.0807

Triad

The Triadic color harmony groups three colors that are evenly spaced from another and form a triangle on the color wheel.



186.4360, -1.2009, 11.8956



183.9090, -5.3781, -1.6742



183.4700, 7.1633, -10.9362

Complementary

The Complementary color scheme is a pair of colors which are on the opposite of each other on the color wheel.



186.4360, -1.2009, 11.8956



193.5640, 1.2009, -11.8956

Split Complementary

Split-complementary colors differ from the complementary color scheme. The scheme consists of three colors, the original color and two neighbors of the complement color.



182.8780, 4.9901, -13.9250



186.4360, -1.2009, 11.8956



183.2610, -2.5937, -8.1219

Square

The Square scheme is like the rectangle color scheme, but the four colors are evenly spaced on the color wheel.



186.4360, -1.2009, 11.8956



184.7850, -7.2890, 4.5736



182.3790, 1.7852, -12.6104



184.8020, 6.9996, -5.0884

Rectangle

The Rectangle color scheme consists of four colors that form a rectangle on the color wheel.



186.4360, -1.2009, 11.8956



185.7580, -6.2897, 10.7362



182.3790, 1.7852, -12.6104



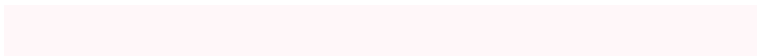
183.2310, 6.2951, -12.4806

Sweetspot

The Sweet Spot groups the original color and five complimentary colors.



186.4360, -1.2009, 11.8956



249.6200, -0.3057, 4.7183



187.0640, 6.3774, 7.8369



123.9080, -0.4476, 3.5887



0.0000, 0.0000, 0.0000



128.0000, 0.0000, 0.0000

Same Dimension

The Same Dimension uses a secret algorithm to generate beautiful new colors.



186.4360, -1.2009, 11.8956



234.0670, -1.5120, 18.3582



189.5020, -4.6845, 9.2067



92.8050, -0.8899, 5.4330



52.4990, -9.6130, 96.9094



11.5620, -2.2491, 21.4321

Inverse Universe

The Inverse Universe completely reimagines the original color for something new.



186.4360, -1.2009, 11.8956



234.0670, -1.5120, 18.3582



190.4980, 4.6845, -9.2067



92.8050, -0.8899, 5.4330



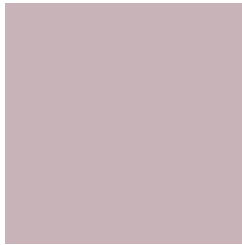
52.4990, -9.6130, 96.9094



11.5620, -2.2491, 21.4321

Previews

White Background



This preview shows how the YUV color 186.4360, -1.2009, 11.8956 looks on a white background.

Color Contrast Check

Large Text (above 18pt) WCAG AA × Fail

Any Text WCAG AA × Fail

Large Text (above 18pt) WCAG AAA × Fail

Any Text WCAG AAA × Fail

Black Background



This preview shows how the YUV color 186.4360, -1.2009, 11.8956 looks on a black background.

Color Contrast Check

Large Text (above 18pt) WCAG AA ✓ Pass

Any Text WCAG AA ✓ Pass

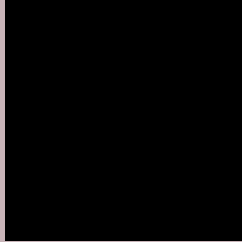
Large Text (above 18pt) WCAG AAA ✓ Pass

Any Text WCAG AAA ✓ Pass

If you want to check with other color combinations, try the [Color Contrast Checker](#).

YUV 186.4360, -1.2009, 11.8956

Background



This preview shows how black text looks on a background with the YUV color 186.4360, -1.2009, 11.8956.



This preview shows how white text looks on a background with the YUV color 186.4360, -1.2009,

Color Blindness Simulation

Color vision deficiency is a very complex topic, and I could not describe the different causes any better than Wikipedia does, so if you want to learn more, you should check out their [article about color blindness](#).

Dichromacy



Original Color

186.4360, -1.2009, 11.8956

Protanopia

185.4240, 0.2840, 2.2592

Deuteranopia

186.7460, -1.3538, 14.2548



Tritanopia

187.1740, 2.8722, 12.1254

Trichromacy



Original Color

186.4360, -1.2009, 11.8956

Protanomaly

185.9190, -0.4531, 5.3330

Deuteranomaly

186.4470, -1.2064, 13.6400

Tritanomaly

186.8320, 1.5618, 12.4253

Monochromacy



Original Color

186.4360, -1.2009, 11.8956

Achromatopsia

186.0000, 0.0000, 0.0000

Achromatomaly

186.2070, -0.5951, 4.2035

CSS Examples

Text

The CSS property to change the color of the text to YUV 186.4360, -1.2009, 11.8956 is called "color". The color property can be set on classes, ids or directly on the HTML element.

This example shows how text in the color `rgb(200, 180, 184)` looks like.

```
.text, #text, p{  
    color:rgb(200, 180, 184)  
}
```

If you want to add a text shadow in that color use the text-shadow property, you can generate a text shadow directly with our [CSS Text Shadow Generator](#).

Here you see how black text with a 4 pixel rgb(200, 180, 184) colored shadow looks like.

```
.shadow{ text-shadow: 4px 4px 2px rgb(200, 180, 184) }
```

Border

The CSS property to change the border of an element to YUV 186.4360, -1.2009, 11.8956 is called "border". The border property can be set on classes, ids or directly on the HTML element.

This example shows the color as border, it can be applied via the CSS property "border" or "border-color".

```
.border, #border, table{ border:4px solid rgb(200, 180, 184) }
```


If only the border color should be changed use the property `border-color`.

```
.border{ border-color:rgb(200, 180, 184) }
```

If you want to add a box shadow in that color use:

Here you see how a box with a 4 pixel `rgb(200, 180, 184)` colored shadow looks like.

```
.boxshadow{ -moz-box-shadow:4px 4px 4px  
4px rgb(200, 180, 184); -webkit-box-  
shadow:4px 4px 4px 4px rgb(200, 180, 184);  
box-shadow:4px 4px 4px 4px rgb(200, 180,  
184) }
```

Background

The CSS property to change the background color of an element to YUV 186.4360, -1.2009, 11.8956 is called "background". The background property can be set on classes, ids or directly on the HTML element.

```
.background, #background, body{  
background: rgb(200, 180, 184) }
```

If only the background color should be changed can be used:

```
.background{ background-color: rgb(200,  
180, 184) }
```

This example shows the color as background, it is applied via the CSS property "background".

To optimize and compress your CSS code, you can use our [online CSS compressor and optimizer](#) based on csstidy. If you want to create a linear or radial gradient as background or border, check our [CSS Gradient Generator](#).

Hey! You found this booklet interesting? Support Converting Colors with the new Membership Option!

The pro membership hides all ads, plus gives you double the colors in the color bucket, and more awesome pro features!

[Learn more, Memberships starting at \\$2.50/m!](#)

**Follow me
on Twitter!**

@ConvertingColor