

Converting Colors

YUV(186.4820, -7.6326,
21.5023)

Have a look what the booklet for
YUV(186.4820, -7.6326, 21.5023)
contains.

YUV(186.4820, -7.6326, 21.5023)	3
<i>Conversions</i>	4
<i>Details</i>	6
<i>Harmonies</i>	12
<i>Previews</i>	24
<i>Color Blindness Simulation</i>	28
<i>CSS Examples</i>	31

Color

**YUV(186.4820, -7.6326,
21.5023)**

Conversions

Conversions Part 1

Format	Color
Hex	D3B1AB
RGB	211, 177, 171
RGB Percent	83%, 69%, 67%
CMY	0.1725, 0.3059, 0.3294
CMYK	0.00, 0.16, 0.19, 0.17
HSL	9°, 31%, 75%
HSV	9°, 19%, 83%
XYZ	49.9368, 48.2334, 45.2061
YIQ	186.4820, 22.1900, 5.3420

Conversions

Conversions Part 2

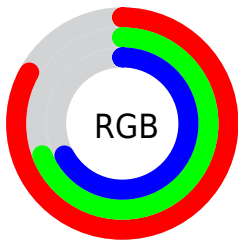
Format	Color
RYB	211, 178, 171
Decimal	13873579
CIELab	74.97, 11.34, 7.65
CIELCh	75, 13.674, 33.997
Yxy	48.2334, 0.3483, 0.3364
Android (android.graphics.Color)	4292063659 (0xFFD3B1AB)
YUV	186.4820, -7.6326, 21.5023
Hunter-Lab	69.4503, 6.8087, 10.0226

Details

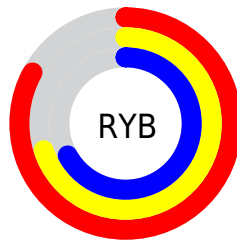
The YUV color $186.4820, -7.6326, 21.5023$ is a light color, and the websafe version is hex $CC9999$. A complement of this color would be $195.5180, 7.6326, -21.5023$, and the grayscale version is $187.0000, 0.0000, 0.0000$.

A 20% lighter version of the original color is $238.7800, -6.3005, 14.2249$, and $132.9980, -6.9010, 20.1728$ is the 20% darker color. If you saturate the color by 10%, you get $173.5220, -11.5963, 32.8682$, and if you desaturate by 10%, it is $199.4420, -3.6689, 10.1364$.

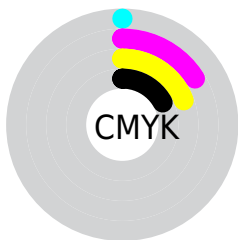
Distribution



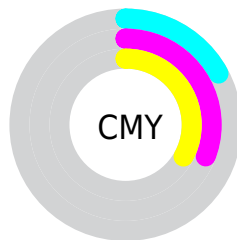
- Red (83%)
- Green (69%)
- Blue (67%)



- Red (83%)
- Yellow (70%)
- Blue (67%)



- Cyan (0%)
- Magenta (16%)
- Yellow (19%)
- Black (17%)



- Cyan (17%)
- Magenta (31%)
- Yellow (33%)

Brightness & Saturation Gradients

These gradients show how the YUV color 186.4820, -7.6326, 21.5023 changes by changing the brightness by 10 percent. The first figure shows a shift by +10% for each color and the second figure -10%.

Similar to the brightness gradients but the following saturation gradients show a change of the YUV color 186.4820, -7.6326, 21.5023 by changing the saturation by 10% instead.

■ 186.4820, -7.6326,
21.5023

■ 186.4820, -7.6326,
21.5023

255.0000, 0.0000,
0.0000

■ 159.2970, -7.0484,
20.7875

■ 238.7800, -6.3005,
14.2249

■ 132.9980, -6.9010,
20.1728

■ 107.6990, -6.7536,
19.5580

■ 83.2150, -6.0220,
18.2284

■ 60.2040, -6.0166,
16.4841

■ 38.0190, -5.4324,
15.7693

■ 15.7480, -7.7638,

16.8840

■ 0.0000, 0.0000,
0.0000

■ 186.4820, -7.6326,
21.5023

■ 186.4820, -7.6326,
21.5023

■ 173.5220,
-11.5963, 32.8682

■ 199.4420, -3.6689,
10.1364

■ 160.5620,
-15.5601, 44.2341

■ 212.4020, 0.2948,
-1.2296

■ 147.6020,
-19.5238, 55.6000

■ 225.3620, 4.2585,
-12.5955

■ 134.6420,
-23.4875, 66.9660

■ 238.3220, 8.2223,
-23.9614

■ 121.6820,
-27.4512, 78.3319

■ 241.8440, 6.4859,
-27.0502

■ 108.6080,
-31.8517, 89.7978

■ 95.6480, -35.8155,
101.1637

■ 83.2750, -40.0686,
112.0148

■ 81.8730, -40.3634,
113.2444

Harmonies

Analogous

The Analogous color harmony consists of three colors that are next to each other on the color wheel.



186.9640, -1.9543, 20.2026



186.4820, -7.6326, 21.5023



185.4230, -11.5475, 17.1690

Triad

The Triadic color harmony groups three colors that are evenly spaced from another and form a triangle on the color wheel.



186.4820, -7.6326, 21.5023



181.1740, -4.0298, -14.1846



184.1480, 12.2520, -9.7768

Complementary

The Complementary color scheme is a pair of colors which are on the opposite of each other on the color wheel.



186.4820, -7.6326, 21.5023



195.5180, 7.6326, -21.5023

Split Complementary

Split-complementary colors differ from the complementary color scheme. The scheme consists of three colors, the original color and two neighbors of the complement color.



182.0820, 12.2846, -20.2429



186.4820, -7.6326, 21.5023



180.2530, 2.8333, -22.1469

Square

The Square scheme is like the rectangle color scheme, but the four colors are evenly spaced on the color wheel.



186.4820, -7.6326, 21.5023



182.5730, -9.1565, -3.1335



180.4360, 8.6591, -24.0614



186.1280, 9.3039, 2.5187

Rectangle

The Rectangle color scheme consists of four colors that form a rectangle on the color wheel.



186.4820, -7.6326, 21.5023



184.5640, -12.1101, 10.9064



180.4360, 8.6591, -24.0614



183.2400, 12.6997, -13.3655

Sweetspot

The Sweet Spot groups the original color and five complimentary colors.



186.4820, -7.6326, 21.5023



245.6590, -2.7899, 8.1921



186.8360, 8.9549, 21.1918



122.2780, -1.6161, 5.0182



0.0000, 0.0000, 0.0000



128.0000, 0.0000, 0.0000

Same Dimension

The Same Dimension uses a secret algorithm to generate beautiful new colors.



186.4820, -7.6326, 21.5023



218.9240, -11.3015, 31.6387



198.2220, -13.4204, 11.2063



98.4630, -2.2003, 5.7329



64.9070, -31.9992, 90.4126



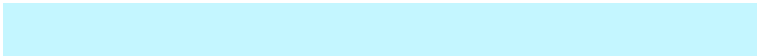
15.7810, -7.7800, 22.1171

Inverse Universe

The Inverse Universe completely reimagines the original color for something new.



195.5180, 7.6326, -21.5023



232.0760, 11.3015, -31.6387



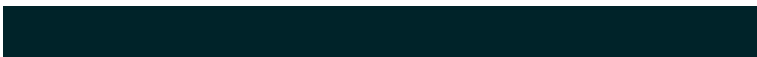
183.7780, 13.4204, -11.2063



100.5370, 2.2003, -5.7329



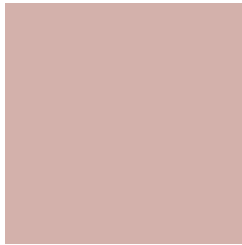
103.0930, 31.9992, -90.4126



25.2190, 7.7800, -22.1171

Previews

White Background



This preview shows how the YUV color 186.4820, -7.6326, 21.5023 looks on a white background.

Color Contrast Check

Large Text (above 18pt) WCAG AA × Fail

Any Text WCAG AA × Fail

Large Text (above 18pt) WCAG AAA × Fail

Any Text WCAG AAA × Fail

Black Background



This preview shows how the YUV color 186.4820, -7.6326, 21.5023 looks on a black background.

Color Contrast Check

Large Text (above 18pt) WCAG AA ✓ Pass

Any Text WCAG AA ✓ Pass

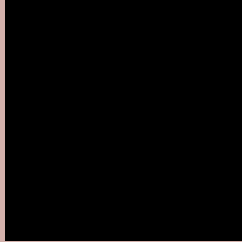
Large Text (above 18pt) WCAG AAA ✓ Pass

Any Text WCAG AAA ✓ Pass

If you want to check with other color combinations, try the [Color Contrast Checker](#).

YUV 186.4820, -7.6326, 21.5023

Background



This preview shows how black text looks on a background with the YUV color 186.4820, -7.6326, 21.5023.



This preview shows how white text looks on a background with the YUV color 186.4820, -7.6326,

Color Blindness Simulation

Color vision deficiency is a very complex topic, and I could not describe the different causes any better than Wikipedia does, so if you want to learn more, you should check out their [article about color blindness](#).

Dichromacy



Original Color

186.4820, -7.6326, 21.5023

Protanopia

184.7680, -4.8156, 4.5885

Deuteranopia

186.1720, -7.4798, 19.1432



Tritanopia

187.2570, 0.3663, 22.5766

Trichromacy



Original Color

186.4820, -7.6326, 21.5023

Protanomaly

185.2850, -5.5635, 11.1511

Deuteranomaly

186.4710, -7.6272, 19.7579

Tritanomaly

186.8610, -2.3965, 22.0469

Monochromacy



Original Color

186.4820, -7.6326, 21.5023

Achromatopsia

186.0000, 0.0000, 0.0000

Achromatomaly

186.3600, -2.6425, 7.5773

CSS Examples

Text

The CSS property to change the color of the text to YUV 186.4820, -7.6326, 21.5023 is called "color". The color property can be set on classes, ids or directly on the HTML element.

This example shows how text in the color `rgb(211, 177, 171)` looks like.

```
.text, #text, p{  
    color:rgb(211, 177, 171)  
}
```

If you want to add a text shadow in that color use the text-shadow property, you can generate a text shadow directly with our [CSS Text Shadow Generator](#).

Here you see how black text with a 4 pixel rgb(211, 177, 171) colored shadow looks like.

```
.shadow{ text-shadow: 4px 4px 2px rgb(211, 177, 171) }
```

Border

The CSS property to change the border of an element to YUV 186.4820, -7.6326, 21.5023 is called "border". The border property can be set on classes, ids or directly on the HTML element.

This example shows the color as border, it can be applied via the CSS property "border" or "border-color".

```
.border, #border, table{ border:4px solid rgb(211, 177, 171) }
```


If only the border color should be changed use the property `border-color`.

```
.border{ border-color:rgb(211, 177, 171) }
```

If you want to add a box shadow in that color use:

Here you see how a box with a 4 pixel `rgb(211, 177, 171)` colored shadow looks like.

```
.boxshadow{ -moz-box-shadow:4px 4px 4px  
4px rgb(211, 177, 171); -webkit-box-  
shadow:4px 4px 4px 4px rgb(211, 177, 171);  
box-shadow:4px 4px 4px 4px rgb(211, 177,  
171) }
```

Background

The CSS property to change the background color of an element to YUV 186.4820, -7.6326, 21.5023 is called "background". The background property can be set on classes, ids or directly on the HTML element.

```
.background, #background, body{  
background: rgb(211, 177, 171) }
```

If only the background color should be changed can be used:

```
.background{ background-color: rgb(211,  
177, 171) }
```

This example shows the color as background, it is applied via the CSS property "background".

To optimize and compress your CSS code, you can use our [online CSS compressor and optimizer](#) based on csstidy. If you want to create a linear or radial gradient as background or border, check our [CSS Gradient Generator](#).

Hey! You found this booklet interesting? Support Converting Colors with the new Membership Option!

The pro membership hides all ads, plus gives you double the colors in the color bucket, and more awesome pro features!

[Learn more, Memberships starting at \\$2.50/m!](#)

**Follow me
on Twitter!**

@ConvertingColor