

Converting Colors

YUV(186.6640, -17.0894,
21.3427)

Have a look what the booklet for
YUV(186.6640, -17.0894, 21.3427)
contains.

YUV(186.6640, -17.0894, 21.3427)	3
<i>Conversions</i>	4
<i>Details</i>	6
<i>Harmonies</i>	12
<i>Previews</i>	24
<i>Color Blindness Simulation</i>	28
<i>CSS Examples</i>	31

Color

**YUV(186.6640, -17.0894,
21.3427)**

Conversions

Conversions Part 1

Format	Color
Hex	D3B598
RGB	211, 181, 152
RGB Percent	83%, 71%, 60%
CMY	0.1725, 0.2902, 0.4039
CMYK	0.00, 0.14, 0.28, 0.17
HSL	29°, 40%, 71%
HSV	29°, 28%, 83%
XYZ	49.0553, 49.1636, 36.6098
YIQ	186.6640, 27.1890, -2.6590

Conversions

Conversions Part 2

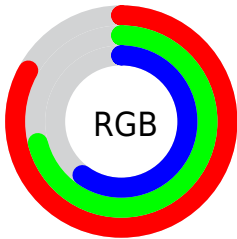
Format	Color
R _Y B	211, 209, 152
Decimal	13874584
CIE Lab	75.55, 6.44, 18.78
CIE LCh	76, 19.852, 71.058
Yxy	49.1636, 0.3638, 0.3646
Android (android.graphics.Color)	4292064664 (0xFFD3B598)
YUV	186.6640, -17.0894, 21.3427
Hunter-Lab	70.1168, 2.1784, 18.1249

Details

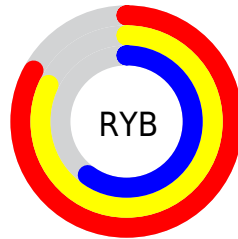
The YUV color $186.6640, -17.0894, 21.3427$ is a light color, and the websafe version is hex $CCCC99$. A complement of this color would be $176.3360, 17.0894, -21.3427$, and the grayscale version is $187.0000, 0.0000, 0.0000$.

A 20% lighter version of the original color is $238.8480, -16.1941, 14.1653$, and $133.2940, -15.9209, 19.9132$ is the 20% darker color. If you saturate the color by 10%, you get $177.8130, -23.0788, 29.1050$, and if you desaturate by 10%, it is $195.5150, -11.0999, 13.5803$.

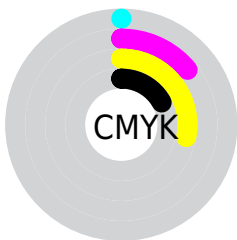
Distribution



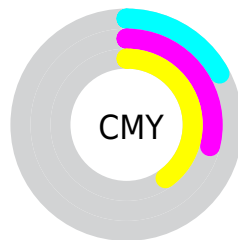
- Red (83%)
- Green (71%)
- Blue (60%)



- Red (83%)
- Yellow (82%)
- Blue (60%)



- Cyan (0%)
- Magenta (14%)
- Yellow (28%)
- Black (17%)



- Cyan (17%)
- Magenta (29%)
- Yellow (40%)

Brightness & Saturation Gradients

These gradients show how the YUV color 186.6640, -17.0894, 21.3427 changes by changing the brightness by 10 percent. The first figure shows a shift by +10% for each color and the second figure -10%.

Similar to the brightness gradients but the following saturation gradients show a change of the YUV color 186.6640, -17.0894, 21.3427 by changing the saturation by 10% instead.

■ 186.6640,
-17.0894, 21.3427

■ 186.6640,
-17.0894, 21.3427

255.0000, 0.0000,
0.0000

■ 159.4790,
-16.5051, 20.6279

■ 238.8480,
-16.1941, 14.1653

■ 133.2940,
-15.9209, 19.9132

■ 252.7200, -8.7360,
1.9996

■ 107.8100,
-15.1893, 18.5836

■ 83.3260, -14.4577,
17.2541

■ 59.8420, -13.7261,
15.9246

■ 37.8310, -13.7207,
14.1802

■ 17.7860, -8.7685,

12.4657

■ 0.0000, 0.0000,
0.0000

■ 186.6640,
-17.0894, 21.3427

■ 186.6640,
-17.0894, 21.3427

■ 177.8130,
-23.0788, 29.1050

■ 195.5150,
-11.0999, 13.5803

■ 169.5490,
-29.3577, 36.3525

■ 203.7790, -4.8210,
6.3328

■ 160.6980,
-35.3471, 44.1149

■ 212.6300, 1.1684,
-1.4295

■ 151.8470,
-41.3366, 51.8772

■ 221.4810, 7.1579,
-9.1918

■ 142.9960,
-47.3260, 59.6395

■ 230.1040, 12.2737,
-16.7542

■ 134.6180,
-54.0417, 66.9870

■ 235.9740, 9.3798,
-21.9022

■ 125.7670,
-60.0311, 74.7493

■ 241.8440, 6.4859,
-27.0502

■ 124.1370,
-61.1995, 76.1789

Harmonies

Analogous

The Analogous color harmony consists of three colors that are next to each other on the color wheel.



188.2720, -12.4591, 29.5795



186.6640, -17.0894, 21.3427



184.5760, -17.0460, 7.3878

Triad

The Triadic color harmony groups three colors that are evenly spaced from another and form a triangle on the color wheel.



186.6640, -17.0894, 21.3427



179.0880, 6.3656, -35.1572



188.6710, 12.4872, 8.1815

Complementary

The Complementary color scheme is a pair of colors which are on the opposite of each other on the color wheel.



186.6640, -17.0894, 21.3427



176.3360, 17.0894, -21.3427

Split Complementary

Split-complementary colors differ from the complementary color scheme. The scheme consists of three colors, the original color and two neighbors of the complement color.



185.9290, 17.7830, -10.4617



186.6640, -17.0894, 21.3427



179.5530, 14.5174, -36.4420

Square

The Square scheme is like the rectangle color scheme, but the four colors are evenly spaced on the color wheel.



186.6640, -17.0894, 21.3427



180.6350, -3.2711, -24.2359



182.3460, 18.5634, -27.4904



189.8810, 4.0027, 22.9064

Rectangle

The Rectangle color scheme consists of four colors that form a rectangle on the color wheel.



186.6640, -17.0894, 21.3427



183.6070, -14.1033, -3.1633



182.3460, 18.5634, -27.4904



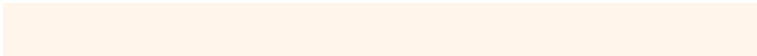
187.7950, 14.3981, 1.9338

Sweetspot

The Sweet Spot groups the original color and five complimentary colors.



186.6640, -17.0894, 21.3427



246.8500, -5.8420, 7.1476



173.0610, 4.4069, 33.2725



122.4090, -3.6526, 4.9033



0.0000, 0.0000, 0.0000



128.0000, 0.0000, 0.0000

Same Dimension

The Same Dimension uses a secret algorithm to generate beautiful new colors.



186.6640, -17.0894, 21.3427



219.2540, -25.2682, 31.3492



203.6870, -25.4817, 6.4135



100.2240, -3.0684, 4.1886



98.9530, -48.7838, 60.5542



23.9990, -11.8315, 14.9099

Inverse Universe

The Inverse Universe completely reimagines the original color for something new.



176.3360, 17.0894, -21.3427



203.7460, 25.2682, -31.3492



159.3130, 25.4817, -6.4135



98.1890, 3.3578, -3.6738



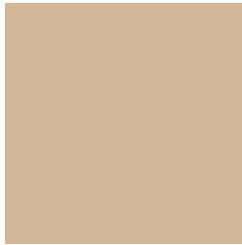
69.6340, 48.4944, -61.0690



17.0010, 11.8315, -14.9099

Previews

White Background



This preview shows how the YUV color 186.6640, -17.0894, 21.3427 looks on a white background.

Color Contrast Check

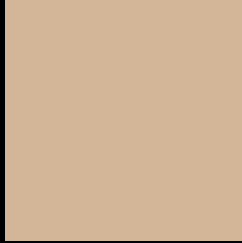
Large Text (above 18pt) WCAG AA × Fail

Any Text WCAG AA × Fail

Large Text (above 18pt) WCAG AAA × Fail

Any Text WCAG AAA × Fail

Black Background



This preview shows how the YUV color 186.6640, -17.0894, 21.3427 looks on a black background.

Color Contrast Check

Large Text (above 18pt) WCAG AA ✓ Pass

Any Text WCAG AA ✓ Pass

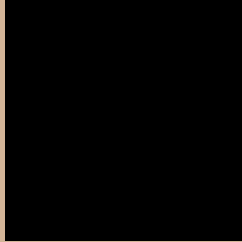
Large Text (above 18pt) WCAG AAA ✓ Pass

Any Text WCAG AAA ✓ Pass

If you want to check with other color combinations, try the [Color Contrast Checker](#).

YUV 186.6640, -17.0894, 21.3427

Background



This preview shows how black text looks on a background with the YUV color 186.6640, -17.0894, 21.3427.



This preview shows how white text looks on a background with the YUV color 186.6640, -17.0894, 21.3427.

21.3427.

Color Blindness Simulation

Color vision deficiency is a very complex topic, and I could not describe the different causes any better than Wikipedia does, so if you want to learn more, you should check out their [article about color blindness](#).

Dichromacy



Original Color

186.6640, -17.0894, 21.3427

Protanopia

185.6410, -15.5990, 9.9618

Deuteranopia

186.9850, -17.2476, 25.4462



Tritanopia

189.1430, -0.0705, 22.6766

Trichromacy



Original Color

186.6640, -17.0894, 21.3427

Protanomaly

185.8480, -16.1941, 14.1653

Deuteranomaly

186.9740, -17.2422, 23.7018

Tritanomaly

188.5360, -6.1802, 22.3319

Monochromacy



Original Color

186.6640, -17.0894, 21.3427

Achromatopsia

187.0000, 0.0000, 0.0000

Achromatomaly

187.0350, -6.4263, 7.8623

CSS Examples

Text

The CSS property to change the color of the text to YUV 186.6640, -17.0894, 21.3427 is called "color". The color property can be set on classes, ids or directly on the HTML element.

This example shows how text in the color `rgb(211, 181, 152)` looks like.

```
.text, #text, p{  
    color:rgb(211, 181, 152)  
}
```

If you want to add a text shadow in that color use the text-shadow property, you can generate a text shadow directly with our [CSS Text Shadow Generator](#).

Here you see how black text with a 4 pixel rgb(211, 181, 152) colored shadow looks like.

```
.shadow{ text-shadow: 4px 4px 2px rgb(211, 181, 152) }
```

Border

The CSS property to change the border of an element to YUV 186.6640, -17.0894, 21.3427 is called "border".

The border property can be set on classes, ids or directly on the HTML element.

This example shows the color as border, it can be applied via the CSS property "border" or "border-color".

```
.border, #border, table{ border:4px solid rgb(211, 181, 152) }
```


If only the border color should be changed use the property `border-color`.

```
.border{ border-color:rgb(211, 181, 152) }
```

If you want to add a box shadow in that color use:

Here you see how a box with a 4 pixel `rgb(211, 181, 152)` colored shadow looks like.

```
.boxshadow{ -moz-box-shadow:4px 4px 4px  
4px rgb(211, 181, 152); -webkit-box-  
shadow:4px 4px 4px 4px rgb(211, 181, 152);  
box-shadow:4px 4px 4px 4px rgb(211, 181,  
152) }
```

Background

The CSS property to change the background color of an element to YUV 186.6640, -17.0894, 21.3427 is called "background". The background property can be set on classes, ids or directly on the HTML element.

```
.background, #background, body{  
background: rgb(211, 181, 152) }
```

If only the background color should be changed can be used:

```
.background{ background-color: rgb(211,  
181, 152) }
```

This example shows the color as background, it is applied via the CSS property "background".

To optimize and compress your CSS code, you can use our [online CSS compressor and optimizer](#) based on csstidy. If you want to create a linear or radial gradient as background or border, check our [CSS Gradient Generator](#).

Hey! You found this booklet interesting? Support Converting Colors with the new Membership Option!

The pro membership hides all ads, plus gives you double the colors in the color bucket, and more awesome pro features!

[Learn more, Memberships starting at \\$2.50/m!](#)

**Follow me
on Twitter!**

@ConvertingColor