

Converting Colors

YUV(186.7860, -5.3175,
25.6207)

Have a look what the booklet for
YUV(186.7860, -5.3175, 25.6207)
contains.

YUV(186.7860, -5.3175, 25.6207)	3
<i>Conversions</i>	4
<i>Details</i>	6
<i>Harmonies</i>	12
<i>Previews</i>	24
<i>Color Blindness Simulation</i>	28
<i>CSS Examples</i>	31

Color

**YUV(186.7860, -5.3175,
25.6207)**

Conversions

Conversions Part 1

Format	Color
Hex	D8AEB0
RGB	216, 174, 176
RGB Percent	85%, 68%, 69%
CMY	0.1529, 0.3176, 0.3098
CMYK	0.00, 0.19, 0.19, 0.15
HSL	357°, 35%, 76%
HSV	357°, 19%, 85%
XYZ	51.2914, 48.0056, 47.6370
YIQ	186.7860, 24.3900, 9.5260

Conversions

Conversions Part 2

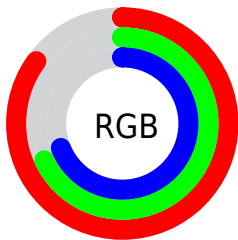
Format	Color
R _Y B	216, 174, 176
Decimal	14200496
CIE Lab	74.83, 15.57, 4.77
CIE LCh	75, 16.285, 17.034
Yxy	48.0056, 0.3491, 0.3267
Android (android.graphics.Color)	4292390576 (0xFFD8AEB0)
YUV	186.7860, -5.3175, 25.6207
Hunter-Lab	69.2861, 10.8901, 7.7360

Details

The YUV color $186.7860, -5.3175, 25.6207$ is a light color, and the websafe version is hex $CC9999$. A complement of this color would be $203.2140, 5.3175, -25.6207$, and the grayscale version is $187.0000, 0.0000, 0.0000$.

A 20% lighter version of the original color is $237.7030, -2.8116, 15.1695$, and $133.3020, -4.5859, 24.2911$ is the 20% darker color. If you saturate the color by 10%, you get $171.4780, -8.1237, 39.0458$, and if you desaturate by 10%, it is $202.0940, -2.5113, 12.1956$.

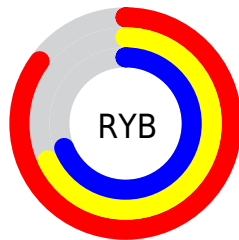
Distribution



Red (85%)

Green (68%)

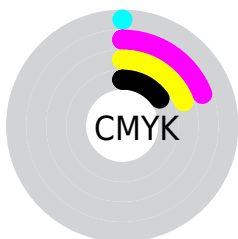
Blue (69%)



Red (85%)

Yellow (68%)

Blue (69%)

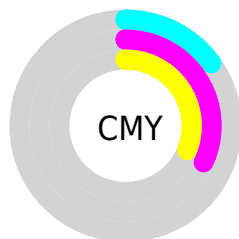


Cyan (0%)

Magenta (19%)

Yellow (19%)

Black (15%)



Cyan (15%)

Magenta (32%)

Yellow (31%)

Brightness & Saturation Gradients

These gradients show how the YUV color 186.7860, -5.3175, 25.6207 changes by changing the brightness by 10 percent. The first figure shows a shift by +10% for each color and the second figure -10%.

Similar to the brightness gradients but the following saturation gradients show a change of the YUV color 186.7860, -5.3175, 25.6207 by changing the saturation by 10% instead.

■ 186.7860, -5.3175,
25.6207

■ 186.7860, -5.3175,
25.6207

255.0000, 0.0000,
0.0000

■ 159.4870, -5.1701,
25.0059

■ 237.7030, -2.8116,
15.1695

■ 133.3020, -4.5859,
24.2911

■ 108.2910, -4.5805,
22.5468

■ 83.6930, -4.2856,
21.3172

■ 60.0950, -3.9908,
20.0877

■ 37.6110, -3.2592,
18.7582

■ 15.0950, -3.9908,

20.0877

■ 0.0000, 0.0000,
0.0000

■ 186.7860, -5.3175,
25.6207

■ 186.7860, -5.3175,
25.6207

■ 171.4780, -8.1237,
39.0458

■ 202.0940, -2.5113,
12.1956

■ 156.8710,
-10.7824, 51.8561

■ 216.7010, 0.1474,
-0.6148

■ 141.5630,
-13.5886, 65.2812

■ 232.0090, 2.9536,
-14.0399

■ 126.9560,
-16.2473, 78.0916

■ 243.3390, 5.7489,
-23.9763

■ 111.6480,
-19.0535, 91.5167

■ 96.4540, -21.4228,
104.8418

■ 81.7330, -24.5184,
117.7522

■ 66.4250, -27.3245,
131.1773

■ 65.7240, -27.4719,
131.7921

Harmonies

Analogous

The Analogous color harmony consists of three colors that are next to each other on the color wheel.



187.0010, 1.9715, 21.0471



186.7860, -5.3175, 25.6207



185.5810, -11.1324, 24.0465

Triad

The Triadic color harmony groups three colors that are evenly spaced from another and form a triangle on the color wheel.



186.7860, -5.3175, 25.6207



180.9420, -8.8454, -9.5961



181.8910, 15.3367, -19.1984

Complementary

The Complementary color scheme is a pair of colors which are on the opposite of each other on the color wheel.



186.7860, -5.3175, 25.6207



203.2140, 5.3175, -25.6207

Split Complementary

Split-complementary colors differ from the complementary color scheme. The scheme consists of three colors, the original color and two neighbors of the complement color.



179.5540, 13.0379, -28.5499



186.7860, -5.3175, 25.6207



179.5150, -1.2399, -22.3767

Square

The Square scheme is like the rectangle color scheme, but the four colors are evenly spaced on the color wheel.



186.7860, -5.3175, 25.6207



182.7650, -13.6881, 3.7141



178.8330, 6.4913, -28.7945



185.2240, 13.6936, -5.4584

Rectangle

The Rectangle color scheme consists of four colors that form a rectangle on the color wheel.



186.7860, -5.3175, 25.6207



184.8640, -13.7370, 19.4133



178.8330, 6.4913, -28.7945



181.3420, 14.6214, -23.1019

Sweetspot

The Sweet Spot groups the original color and five complimentary colors.



186.7860, -5.3175, 25.6207



244.4850, -2.2111, 9.2217



190.7480, 12.4492, 20.3920



121.6910, -1.3267, 5.5330



0.0000, 0.0000, 0.0000



128.0000, 0.0000, 0.0000

Same Dimension

The Same Dimension uses a secret algorithm to generate beautiful new colors.



186.7860, -5.3175, 25.6207



213.9830, -7.3866, 35.9719



197.7110, -11.6895, 16.0395



99.4030, -1.1847, 6.6626



52.0410, -21.7122, 104.3270



13.0850, -5.4649, 26.2355

Inverse Universe

The Inverse Universe completely reimagines the original color for something new.



186.7860, -5.3175, 25.6207



213.9830, -7.3866, 35.9719



192.2890, 11.6895, -16.0395



99.4030, -1.1847, 6.6626



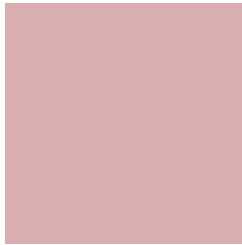
52.0410, -21.7122, 104.3270



13.0850, -5.4649, 26.2355

Previews

White Background



This preview shows how the YUV color 186.7860, -5.3175, 25.6207 looks on a white background.

Color Contrast Check

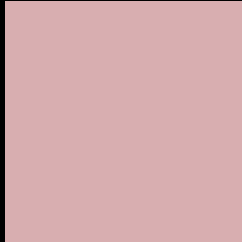
Large Text (above 18pt) WCAG AA × Fail

Any Text WCAG AA × Fail

Large Text (above 18pt) WCAG AAA × Fail

Any Text WCAG AAA × Fail

Black Background



This preview shows how the YUV color 186.7860, -5.3175, 25.6207 looks on a black background.

Color Contrast Check

Large Text (above 18pt) WCAG AA ✓ Pass

Any Text WCAG AA ✓ Pass

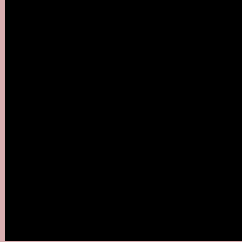
Large Text (above 18pt) WCAG AAA ✓ Pass

Any Text WCAG AAA ✓ Pass

If you want to check with other color combinations, try the [Color Contrast Checker](#).

YUV 186.7860, -5.3175, 25.6207

Background



This preview shows how black text looks on a background with the YUV color 186.7860, -5.3175, 25.6207.



This preview shows how white text looks on a background with the YUV color 186.7860, -5.3175,

25.6207.

Color Blindness Simulation

Color vision deficiency is a very complex topic, and I could not describe the different causes any better than Wikipedia does, so if you want to learn more, you should check out their [article about color blindness](#).

Dichromacy



Original Color

186.7860, -5.3175, 25.6207

Protanopia

184.8540, -1.9000, 2.7590

Deuteranopia

186.0300, -5.4378, 17.5137



Tritanopia

187.0510, -0.5181, 26.2653

Trichromacy



Original Color

186.7860, -5.3175, 25.6207

Protanomaly

185.2680, -3.0901, 11.1660

Deuteranomaly

186.6390, -5.7380, 20.4876

Tritanomaly

187.1820, -2.5547, 26.1504

Monochromacy



Original Color

186.7860, -5.3175, 25.6207

Achromatopsia

187.0000, 0.0000, 0.0000

Achromatomaly

186.8980, -1.9217, 9.7365

CSS Examples

Text

The CSS property to change the color of the text to YUV 186.7860, -5.3175, 25.6207 is called "color". The color property can be set on classes, ids or directly on the HTML element.

This example shows how text in the color `rgb(216, 174, 176)` looks like.

```
.text, #text, p{  
    color:rgb(216, 174, 176)  
}
```

If you want to add a text shadow in that color use the text-shadow property, you can generate a text shadow directly with our [CSS Text Shadow Generator](#).

Here you see how black text with a 4 pixel rgb(216, 174, 176) colored shadow looks like.

```
.shadow{ text-shadow: 4px 4px 2px rgb(216, 174, 176) }
```

Border

The CSS property to change the border of an element to YUV 186.7860, -5.3175, 25.6207 is called "border". The border property can be set on classes, ids or directly on the HTML element.

This example shows the color as border, it can be applied via the CSS property "border" or "border-color".

```
.border, #border, table{ border:4px solid rgb(216, 174, 176) }
```


If only the border color should be changed use the property `border-color`.

```
.border{ border-color:rgb(216, 174, 176) }
```

If you want to add a box shadow in that color use:

Here you see how a box with a 4 pixel `rgb(216, 174, 176)` colored shadow looks like.

```
.boxshadow{ -moz-box-shadow:4px 4px 4px  
4px rgb(216, 174, 176); -webkit-box-  
shadow:4px 4px 4px 4px rgb(216, 174, 176);  
box-shadow:4px 4px 4px 4px rgb(216, 174,  
176) }
```

Background

The CSS property to change the background color of an element to YUV 186.7860, -5.3175, 25.6207 is called "background". The background property can be set on classes, ids or directly on the HTML element.

```
.background, #background, body{  
background: rgb(216, 174, 176) }
```

If only the background color should be changed can be used:

```
.background{ background-color: rgb(216,  
174, 176) }
```

This example shows the color as background, it is applied via the CSS property "background".

To optimize and compress your CSS code, you can use our [online CSS compressor and optimizer](#) based on csstidy. If you want to create a linear or radial gradient as background or border, check our [CSS Gradient Generator](#).

Hey! You found this booklet interesting? Support Converting Colors with the new Membership Option!

The pro membership hides all ads, plus gives you double the colors in the color bucket, and more awesome pro features!

[Learn more, Memberships starting at \\$2.50/m!](#)

**Follow me
on Twitter!**

@ConvertingColor