

Converting Colors

YUV(186.9690, -2.9427,
10.5512)

Have a look what the booklet for
YUV(186.9690, -2.9427, 10.5512)
contains.

YUV(186.9690, -2.9427, 10.5512)	3
<i>Conversions</i>	4
<i>Details</i>	6
<i>Harmonies</i>	12
<i>Previews</i>	24
<i>Color Blindness Simulation</i>	28
<i>CSS Examples</i>	31

Color

**YUV(186.9690, -2.9427,
10.5512)**

Conversions

Conversions Part 1

Format	Color
Hex	C7B6B5
RGB	199, 182, 181
RGB Percent	78%, 71%, 71%
CMY	0.2196, 0.2863, 0.2902
CMYK	0.00, 0.09, 0.09, 0.22
HSL	3°, 14%, 75%
HSV	3°, 9%, 78%
XYZ	48.6216, 48.9342, 50.5987
YIQ	186.9690, 10.4530, 3.2930

Conversions

Conversions Part 2

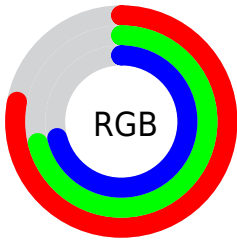
Format	Color
R _Y B	199, 182, 181
Decimal	13088437
CIE Lab	75.41, 5.87, 2.69
CIE LCh	75, 6.460, 24.611
Yxy	48.9342, 0.3282, 0.3303
Android (android.graphics.Color)	4291278517 (0xFFC7B6B5)
YUV	186.9690, -2.9427, 10.5512
Hunter-Lab	69.9530, 1.6507, 6.0812

Details

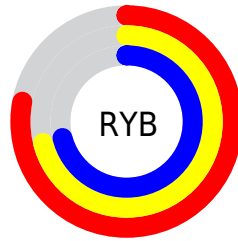
The YUV color $186.9690, -2.9427, 10.5512$ is a light color, and the websafe version is hex `CCCCCC`. A complement of this color would be $193.0310, 2.9427, -10.5512$, and the grayscale version is $187.0000, 0.0000, 0.0000$.

A 20% lighter version of the original color is $242.9690, -2.9427, 10.5512$, and $133.6700, -2.7953, 9.9364$ is the 20% darker color. If you saturate the color by 10%, you get $173.5360, -6.1802, 22.3319$, and if you desaturate by 10%, it is $200.4020, 0.2948, -1.2296$.

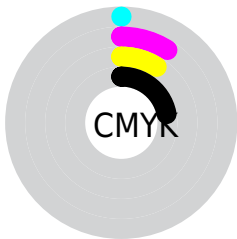
Distribution



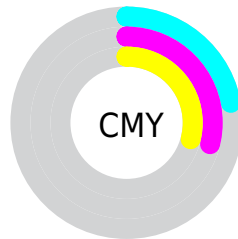
- Red (78%)
- Green (71%)
- Blue (71%)



- Red (78%)
- Yellow (71%)
- Blue (71%)



- Cyan (0%)
- Magenta (9%)
- Yellow (9%)
- Black (22%)



- Cyan (22%)
- Magenta (29%)
- Yellow (29%)

Brightness & Saturation Gradients

These gradients show how the YUV color 186.9690, -2.9427, 10.5512 changes by changing the brightness by 10 percent. The first figure shows a shift by +10% for each color and the second figure -10%.

Similar to the brightness gradients but the following saturation gradients show a change of the YUV color 186.9690, -2.9427, 10.5512 by changing the saturation by 10% instead.

■ 186.9690, -2.9427,
10.5512

■ 186.9690, -2.9427,
10.5512

255.0000, 0.0000,
0.0000

■ 159.9690, -2.9427,
10.5512

■ 242.9690, -2.9427,
10.5512

■ 133.6700, -2.7953,
9.9364

■ 108.3710, -2.6479,
9.3216

■ 84.0720, -2.5005,
8.7069

■ 61.0720, -2.5005,
8.7069

■ 39.4740, -2.2057,
7.4773

■ 18.0720, -2.5005,

8.7069

0.0000, 0.0000,
0.0000

186.9690, -2.9427,
10.5512

186.9690, -2.9427,
10.5512

173.5360, -6.1802,
22.3319

200.4020, 0.2948,
-1.2296

160.1030, -9.4178,
34.1127

213.8350, 3.5323,
-13.0103

147.2570,
-12.9447, 45.3786

226.6810, 7.0593,
-24.2762

133.8240,
-16.1822, 57.1594

238.2560, 8.2548,
-34.4275

120.5050,
-18.9830, 68.8401

■ 107.0720,
-22.2205, 80.6209

■ 93.6390, -25.4580,
92.4016

■ 80.7930, -28.9849,
103.6675

■ 67.3600, -32.2225,
115.4483

Harmonies

Analogous

The Analogous color harmony consists of three colors that are next to each other on the color wheel.



187.0550, -0.0271, 8.7218



186.9690, -2.9427, 10.5512



186.3880, -5.1213, 9.3067

Triad

The Triadic color harmony groups three colors that are evenly spaced from another and form a triangle on the color wheel.



186.9690, -2.9427, 10.5512



184.2830, -2.6045, -4.6332



185.7480, 5.5472, -5.9180

Complementary

The Complementary color scheme is a pair of colors which are on the opposite of each other on the color wheel.



186.9690, -2.9427, 10.5512



193.0310, 2.9427, -10.5512

Split Complementary

Split-complementary colors differ from the complementary color scheme. The scheme consists of three colors, the original color and two neighbors of the complement color.



184.3130, 5.2687, -9.9215



186.9690, -2.9427, 10.5512



183.6460, 0.1745, -9.3365

Square

The Square scheme is like the rectangle color scheme, but the four colors are evenly spaced on the color wheel.



186.9690, -2.9427, 10.5512



185.0340, -4.9468, -0.0298



183.7320, 3.0901, -11.1660



186.5530, 4.6574, -0.4850

Rectangle

The Rectangle color scheme consists of four colors that form a rectangle on the color wheel.



186.9690, -2.9427, 10.5512



185.8500, -5.8421, 7.1475



183.7320, 3.0901, -11.1660



185.1500, 5.8421, -7.1475

Sweetspot

The Sweet Spot groups the original color and five complimentary colors.



186.9690, -2.9427, 10.5512



249.9790, -1.4686, 4.4034



188.3200, 4.7722, 9.3664



124.3810, -1.1738, 3.1739



0.0000, 0.0000, 0.0000



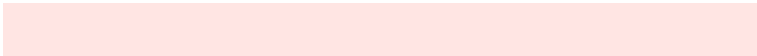
128.0000, 0.0000, 0.0000

Same Dimension

The Same Dimension uses a secret algorithm to generate beautiful new colors.



186.9690, -2.9427, 10.5512



236.5460, -4.7062, 16.1842



192.2520, -5.5472, 5.9180



92.6910, -1.3267, 5.5330



54.0200, -26.6319, 95.5755



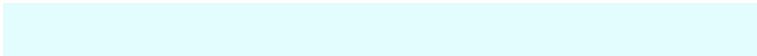
11.9380, -5.8854, 21.1024

Inverse Universe

The Inverse Universe completely reimagines the original color for something new.



193.0310, 2.9427, -10.5512



245.4540, 4.7062, -16.1842



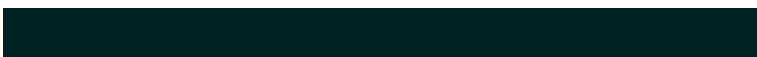
187.7480, 5.5472, -5.9180



96.3090, 1.3267, -5.5330



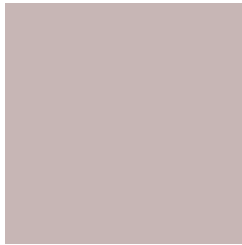
108.9800, 26.6319, -95.5755



24.0620, 5.8854, -21.1024

Previews

White Background



This preview shows how the YUV color 186.9690, -2.9427, 10.5512 looks on a white background.

Color Contrast Check

Large Text (above 18pt) WCAG AA × Fail

Any Text WCAG AA × Fail

Large Text (above 18pt) WCAG AAA × Fail

Any Text WCAG AAA × Fail

Black Background



This preview shows how the YUV color 186.9690, -2.9427, 10.5512 looks on a black background.

Color Contrast Check

Large Text (above 18pt) WCAG AA ✓ Pass

Any Text WCAG AA ✓ Pass

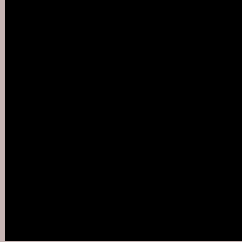
Large Text (above 18pt) WCAG AAA ✓ Pass

Any Text WCAG AAA ✓ Pass

If you want to check with other color combinations, try the [Color Contrast Checker](#).

YUV 186.9690, -2.9427, 10.5512

Background



This preview shows how black text looks on a background with the YUV color 186.9690, -2.9427, 10.5512.



This preview shows how white text looks on a background with the YUV color 186.9690, -2.9427,

Color Blindness Simulation

Color vision deficiency is a very complex topic, and I could not describe the different causes any better than Wikipedia does, so if you want to learn more, you should check out their [article about color blindness](#).

Dichromacy



Original Color

186.9690, -2.9427, 10.5512

Protanopia

186.2670, -1.6106, 3.2738

Deuteranopia

187.5890, -3.2484, 15.2694



Tritanopia

187.8750, 3.0196, 11.5106

Trichromacy



Original Color

186.9690, -2.9427, 10.5512

Protanomaly

186.4630, -2.2003, 5.7329

Deuteranomaly

187.5780, -3.2430, 13.5251

Tritanomaly

187.5930, 0.6937, 10.8809

Monochromacy



Original Color

186.9690, -2.9427, 10.5512

Achromatopsia

187.0000, 0.0000, 0.0000

Achromatomaly

186.7940, -0.8844, 3.6887

CSS Examples

Text

The CSS property to change the color of the text to YUV 186.9690, -2.9427, 10.5512 is called "color". The color property can be set on classes, ids or directly on the HTML element.

This example shows how text in the color `rgb(199, 182, 181)` looks like.

```
.text, #text, p{  
    color:rgb(199, 182, 181)  
}
```

If you want to add a text shadow in that color use the text-shadow property, you can generate a text shadow directly with our [CSS Text Shadow Generator](#).

Here you see how black text with a 4 pixel rgb(199, 182, 181) colored shadow looks like.

```
.shadow{ text-shadow: 4px 4px 2px rgb(199, 182, 181) }
```

Border

The CSS property to change the border of an element to YUV 186.9690, -2.9427, 10.5512 is called "border". The border property can be set on classes, ids or directly on the HTML element.

This example shows the color as border, it can be applied via the CSS property "border" or "border-color".

```
.border, #border, table{ border:4px solid rgb(199, 182, 181) }
```


If only the border color should be changed use the property `border-color`.

```
.border{ border-color:rgb(199, 182, 181) }
```

If you want to add a box shadow in that color use:

Here you see how a box with a 4 pixel `rgb(199, 182, 181)` colored shadow looks like.

```
.boxshadow{ -moz-box-shadow:4px 4px 4px  
4px rgb(199, 182, 181); -webkit-box-  
shadow:4px 4px 4px 4px rgb(199, 182, 181);  
box-shadow:4px 4px 4px 4px rgb(199, 182,  
181) }
```

Background

The CSS property to change the background color of an element to YUV 186.9690, -2.9427, 10.5512 is called "background". The background property can be set on classes, ids or directly on the HTML element.

```
.background, #background, body{  
background: rgb(199, 182, 181) }
```

If only the background color should be changed can be used:

```
.background{ background-color: rgb(199,  
182, 181) }
```

This example shows the color as background, it is applied via the CSS property "background".

To optimize and compress your CSS code, you can use our [online CSS compressor and optimizer](#) based on csstidy. If you want to create a linear or radial gradient as background or border, check our [CSS Gradient Generator](#).

Hey! You found this booklet interesting? Support Converting Colors with the new Membership Option!

The pro membership hides all ads, plus gives you double the colors in the color bucket, and more awesome pro features!

[Learn more, Memberships starting at \\$2.50/m!](#)

**Follow me
on Twitter!**

@ConvertingColor