

# Converting Colors

YUV(186.9980, -23.6630,  
29.8198)

Have a look what the booklet for  
YUV(186.9980, -23.6630, 29.8198)  
contains.

<b>YUV(186.9980, -23.6630, 29.8198)</b> .....	3
<b><i>Conversions</i></b> .....	4
<b><i>Details</i></b> .....	6
<b><i>Harmonies</i></b> .....	12
<b><i>Previews</i></b> .....	24
<b><i>Color Blindness Simulation</i></b> .....	28
<b><i>CSS Examples</i></b> .....	31

# Color

**YUV(186.9980, -23.6630,  
29.8198)**

# Conversions

## Conversions Part 1

Format	Color
Hex	DDB38B
RGB	221, 179, 139
RGB Percent	87%, 70%, 55%
CMY	0.1333, 0.2980, 0.4549
CMYK	0.00, 0.19, 0.37, 0.13
HSL	29°, 55%, 71%
HSV	29°, 37%, 87%
XYZ	50.5991, 49.4764, 31.3091
YIQ	186.9980, 37.8720, -3.5360

# Conversions

## Conversions Part 2

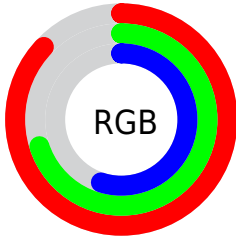
Format	Color
R <sub>Y</sub> B	221, 217, 139
Decimal	14529419
CIE Lab	75.75, 9.77, 26.18
CIE LCh	76, 27.941, 69.527
Yxy	49.4764, 0.3851, 0.3766
Android (android.graphics.Color)	4292719499 (0xFFDDB38B)
YUV	186.9980, -23.6630, 29.8198
Hunter-Lab	70.3395, 5.3109, 22.8468

# Details

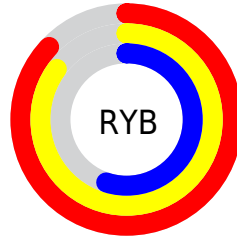
The YUV color **186.9980, -23.6630, 29.8198** is a light color, and the websafe version is hex **FFCC99**. A complement of this color would be **173.0020, 23.6630, -29.8198**, and the grayscale version is **187.0000, 0.0000, 0.0000**.

A 20% lighter version of the original color is **236.1920, -21.2937, 16.4946**, and **133.1440, -21.7630, 27.0607** is the 20% darker color. If you saturate the color by 10%, you get **178.0330, -30.0893, 37.6821**, and if you desaturate by 10%, it is **195.9630, -17.2368, 21.9574**.

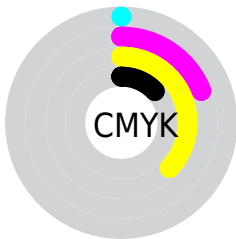
# Distribution



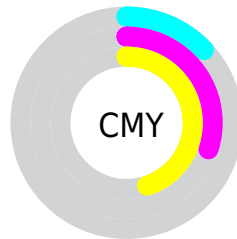
- Red (87%)
- Green (70%)
- Blue (55%)



- Red (87%)
- Yellow (85%)
- Blue (55%)



- Cyan (0%)
- Magenta (19%)
- Yellow (37%)
- Black (13%)



- Cyan (13%)
- Magenta (30%)
- Yellow (45%)

# Brightness & Saturation Gradients

These gradients show how the YUV color 186.9980, -23.6630, 29.8198 changes by changing the brightness by 10 percent. The first figure shows a shift by +10% for each color and the second figure -10%.

Similar to the brightness gradients but the following saturation gradients show a change of the YUV color 186.9980, -23.6630, 29.8198 by changing the saturation by 10% instead.



■ 186.9980,  
-23.6630, 29.8198

■ 186.9980,  
-23.6630, 29.8198

255.0000, 0.0000,  
0.0000

■ 159.5140,  
-22.9314, 28.4902

■ 236.1920,  
-21.2937, 16.4946

■ 133.1440,  
-21.7630, 27.0607

■ 251.1240,  
-14.8511, 3.3993

■ 107.6600,  
-21.0314, 25.7312

■ 254.3160, -2.6208,  
0.5999

■ 83.1760, -20.2998,  
24.4016

■ 59.9800, -19.7101,  
21.9425

■ 37.3110, -18.3943,  
19.8983

■ 17.8080, -8.7793,

15.9544

■ 0.0000, 0.0000,  
0.0000

■ 186.9980,  
-23.6630, 29.8198

■ 186.9980,  
-23.6630, 29.8198

■ 178.0330,  
-30.0893, 37.6821

■ 195.9630,  
-17.2368, 21.9574

■ 168.4810,  
-36.2261, 46.0592

■ 205.5150,  
-11.0999, 13.5803

■ 159.5160,  
-42.6524, 53.9215

■ 214.4800, -4.6736,  
5.7180

■ 150.5510,  
-49.0786, 61.7838

■ 223.4450, 1.7526,  
-2.1443

■ 140.8850,  
-55.6523, 70.2609

■ 233.1110, 8.3263,  
-10.6213

■ 131.9200,  
-62.0786, 78.1232

■ 240.1380, 7.3270,  
-16.7840

■ 129.4750,  
-63.8312, 80.2674

■ 244.8340, 5.0118,  
-20.9024

# Harmonies

## Analogous

The Analogous color harmony consists of three colors that are next to each other on the color wheel.



188.6110, -16.5702, 41.5602



186.9980, -23.6630, 29.8198



184.7630, -24.0402, 10.7318

# Triad

The Triadic color harmony groups three colors that are evenly spaced from another and form a triangle on the color wheel.



186.9980, -23.6630, 29.8198



174.7870, 9.4720, -51.5562



189.7620, 17.8653, 9.8557

# Complementary

The Complementary color scheme is a pair of colors which are on the opposite of each other on the color wheel.



186.9980, -23.6630, 29.8198



173.0020, 23.6630, -29.8198

# Split Complementary

Split-complementary colors differ from the complementary color scheme. The scheme consists of three colors, the original color and two neighbors of the complement color.



185.8340, 25.2248, -17.3944



186.9980, -23.6630, 29.8198



174.9680, 21.7078, -56.0999

# Square

The Square scheme is like the rectangle color scheme, but the four colors are evenly spaced on the color wheel.



186.9980, -23.6630, 29.8198



178.1130, -4.9857, -34.3021



179.7230, 26.7586, -42.7301



191.0330, 6.8857, 31.5431



# Rectangle

The Rectangle color scheme consists of four colors that form a rectangle on the color wheel.



186.9980, -23.6630, 29.8198



182.5870, -20.5024, -4.0228



179.7230, 26.7586, -42.7301



188.8040, 20.8026, 1.0489

# Sweetspot

The Sweet Spot groups the original color and five complimentary colors.



186.9980, -23.6630, 29.8198



243.5900, -8.1789, 10.0066



168.3060, 6.2581, 46.2126



120.7790, -4.8210, 6.3328



0.0000, 0.0000, 0.0000



128.0000, 0.0000, 0.0000



# Same Dimension

The Same Dimension uses a secret algorithm to generate beautiful new colors.



186.9980, -23.6630, 29.8198



207.2570, -33.1577, 41.8706



211.0650, -35.5280, 8.7130



105.2240, -3.0684, 4.1886



101.6220, -50.0996, 62.5985



26.6680, -13.1473, 16.9542

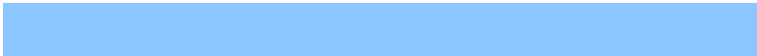


# Inverse Universe

The Inverse Universe completely reimagines the original color for something new.



173.0020, 23.6630, -29.8198



187.7430, 33.1577, -41.8706



148.9350, 35.5280, -8.7130



103.1890, 3.3578, -3.6738



71.9650, 49.8103, -63.1133



19.3320, 13.1473, -16.9542



# Previews

## White Background



This preview shows how the YUV color 186.9980, -23.6630, 29.8198 looks on a white background.

## Color Contrast Check

Large Text (above 18pt) WCAG AA × Fail

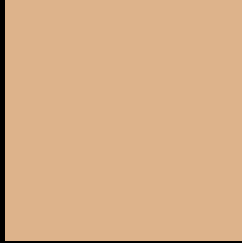
Any Text WCAG AA × Fail

Large Text (above 18pt) WCAG AAA × Fail

Any Text WCAG AAA × Fail



# Black Background



This preview shows how the YUV color 186.9980, -23.6630, 29.8198 looks on a black background.

## Color Contrast Check

Large Text (above 18pt) WCAG AA ✓ Pass

Any Text WCAG AA ✓ Pass

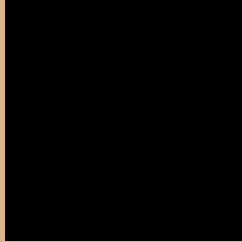
Large Text (above 18pt) WCAG AAA ✓ Pass

Any Text WCAG AAA ✓ Pass

If you want to check with other color combinations, try the [Color Contrast Checker](#).

# YUV 186.9980, -23.6630, 29.8198

## Background



This preview shows how black text looks on a background with the YUV color 186.9980, -23.6630, 29.8198.



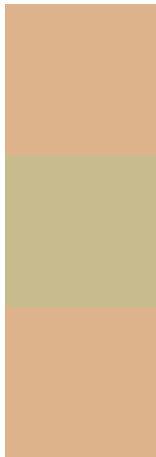
This preview shows how white text looks on a background with the YUV color 186.9980, -23.6630,



# Color Blindness Simulation

Color vision deficiency is a very complex topic, and I could not describe the different causes any better than Wikipedia does, so if you want to learn more, you should check out their [article about color blindness](#).

## Dichromacy



### Original Color

186.9980, -23.6630, 29.8198

### Protanopia

185.7570, -21.5722, 12.4911

### Deuteranopia

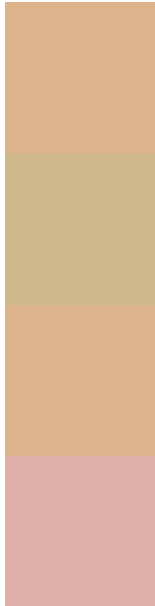
186.9980, -23.6630, 29.8198



## Tritanopia

190.3290, -2.1342, 31.2835

# Trichromacy



## Original Color

186.9980, -23.6630, 29.8198

## Protanomaly

186.2740, -22.3201, 19.0537

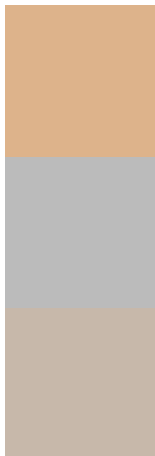
## Deuteranomaly

186.9980, -23.6630, 29.8198

## Tritanomaly

188.9670, -9.8437, 30.7239

# Monochromacy



## Original Color

186.9980, -23.6630, 29.8198

## Achromatopsia

187.0000, 0.0000, 0.0000

## Achromatomaly

186.8890, -8.3263, 10.6213

# CSS Examples

## Text

The CSS property to change the color of the text to YUV 186.9980, -23.6630, 29.8198 is called "color". The color property can be set on classes, ids or directly on the HTML element.

This example shows how text in the color `rgb(221, 179, 139)` looks like.

```
.text, #text, p{  
    color:rgb(221, 179, 139)  
}
```

If you want to add a text shadow in that color use the text-shadow property, you can generate a text shadow directly with our [CSS Text Shadow Generator](#).

Here you see how black text with a 4 pixel rgb(221, 179, 139) colored shadow looks like.

```
.shadow{ text-shadow: 4px 4px 2px rgb(221, 179, 139) }
```

## Border

The CSS property to change the border of an element to YUV 186.9980, -23.6630, 29.8198 is called "border".

The border property can be set on classes, ids or directly on the HTML element.

This example shows the color as border, it can be applied via the CSS property "border" or "border-color".

```
.border, #border, table{ border:4px solid rgb(221, 179, 139) }
```



If only the border color should be changed use the property `border-color`.

```
.border{ border-color:rgb(221, 179, 139) }
```

If you want to add a box shadow in that color use:

Here you see how a box with a 4 pixel `rgb(221, 179, 139)` colored shadow looks like.

```
.boxshadow{ -moz-box-shadow:4px 4px 4px 4px rgb(221, 179, 139); -webkit-box-shadow:4px 4px 4px 4px rgb(221, 179, 139); box-shadow:4px 4px 4px 4px rgb(221, 179, 139) }
```

# Background

The CSS property to change the background color of an element to YUV 186.9980, -23.6630, 29.8198 is called "background". The background property can be set on classes, ids or directly on the HTML element.

```
.background, #background, body{  
background: rgb(221, 179, 139) }
```

If only the background color should be changed can be used:

```
.background{ background-color: rgb(221,  
179, 139) }
```

This example shows the color as background, it is applied via the CSS property "background".

To optimize and compress your CSS code, you can use our [online CSS compressor and optimizer](#) based on csstidy. If you want to create a linear or radial gradient as background or border, check our [CSS Gradient Generator](#).

Hey! You found this booklet interesting? Support Converting Colors with the new Membership Option!

The pro membership hides all ads, plus gives you double the colors in the color bucket, and more awesome pro features!

**[Learn more, Memberships starting at \\$2.50/m!](#)**

**Follow me  
on Twitter!**

@ConvertingColor