

Converting Colors

YUV(187.2530, -3.5757,
26.9651)

Have a look what the booklet for
YUV(187.2530, -3.5757, 26.9651)
contains.

YUV(187.2530, -3.5757, 26.9651)	3
<i>Conversions</i>	4
<i>Details</i>	6
<i>Harmonies</i>	12
<i>Previews</i>	24
<i>Color Blindness Simulation</i>	28
<i>CSS Examples</i>	31

Color

**YUV(187.2530, -3.5757,
26.9651)**

Conversions

Conversions Part 1

Format	Color
Hex	DAADB4
RGB	218, 173, 180
RGB Percent	85%, 68%, 71%
CMY	0.1451, 0.3216, 0.2941
CMYK	0.00, 0.21, 0.17, 0.15
HSL	351°, 38%, 77%
HSV	351°, 21%, 85%
XYZ	52.0952, 48.0879, 49.7162
YIQ	187.2530, 24.5730, 11.7170

Conversions

Conversions Part 2

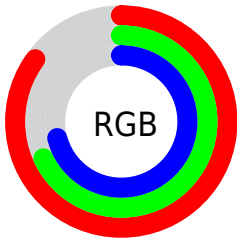
Format	Color
R_{YB}	218, 173, 180
Decimal	14331316
CIE _{Lab}	74.88, 17.46, 2.68
CIE _{LCh}	75, 17.668, 8.733
Yxy	48.0879, 0.3475, 0.3208
Android (android.graphics.Color)	4292521396 (0xFFDAADB4)
YUV	187.2530, -3.5757, 26.9651
Hunter-Lab	69.3454, 12.7424, 6.0347

Details

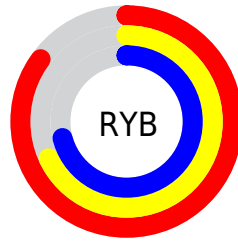
The YUV color $187.2530, -3.5757, 26.9651$ is a light color, and the websafe version is hex $CC9999$. A complement of this color would be $203.7470, 3.5757, -26.9651$, and the grayscale version is $187.0000, 0.0000, 0.0000$.

A 20% lighter version of the original color is $237.5720, -0.7750, 15.2844$, and $133.3560, -3.1335, 25.1208$ is the 20% darker color. If you saturate the color by 10%, you get $172.2870, -5.0715, 40.0903$, and if you desaturate by 10%, it is $202.2190, -2.0800, 13.8399$.

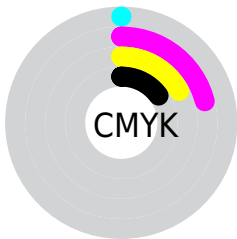
Distribution



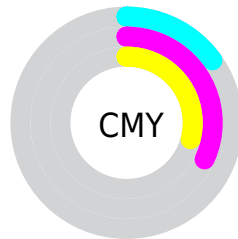
- Red (85%)
- Green (68%)
- Blue (71%)



- Red (85%)
- Yellow (68%)
- Blue (71%)



- Cyan (0%)
- Magenta (21%)
- Yellow (17%)
- Black (15%)



- Cyan (15%)
- Magenta (32%)
- Yellow (29%)

Brightness & Saturation Gradients

These gradients show how the YUV color 187.2530, -3.5757, 26.9651 changes by changing the brightness by 10 percent. The first figure shows a shift by +10% for each color and the second figure -10%.

Similar to the brightness gradients but the following saturation gradients show a change of the YUV color 187.2530, -3.5757, 26.9651 by changing the saturation by 10% instead.

 187.2530, -3.5757,
26.9651


 187.2530, -3.5757,
26.9651


255.0000, 0.0000,
0.0000


 159.9540, -3.4283,
26.3503


 237.5720, -0.7750,
15.2844

 133.3560, -3.1335,
25.1208

 108.6440, -3.2755,
23.9912

 84.0460, -2.9807,
22.7617

 60.5620, -2.2491,
21.4321

 37.9640, -1.9543,
20.2026

 15.3770, -1.6649,

20.7174

0.0000, 0.0000,
0.0000

187.2530, -3.5757,
26.9651

187.2530, -3.5757,
26.9651

172.2870, -5.0715,
40.0903

202.2190, -2.0800,
13.8399

157.2070, -7.0041,
53.3155

217.2990, -0.1474,
0.6148

142.8280, -8.7892,
65.9258

231.6780, 1.6377,
-11.9956

127.7480,
-10.7218, 79.1510

243.8230, 5.0173,
-22.6468

112.7820,
-12.2175, 92.2762

243.9370, 5.4541,
-22.7467

■ 97.8160, -13.7133,
105.4014

■ 82.7360, -15.6458,
118.6265

■ 69.0580, -17.2836,
130.6221

Harmonies

Analogous

The Analogous color harmony consists of three colors that are next to each other on the color wheel.



187.2720, 4.3029, 19.9325



187.2530, -3.5757, 26.9651



186.4180, -10.5591, 26.8204

Triad

The Triadic color harmony groups three colors that are evenly spaced from another and form a triangle on the color wheel.



187.2530, -3.5757, 26.9651



181.6820, -11.1822, -6.7371



181.0860, 16.2266, -24.6314

Complementary

The Complementary color scheme is a pair of colors which are on the opposite of each other on the color wheel.



187.2530, -3.5757, 26.9651



203.7470, 3.5757, -26.9651

Split Complementary

Split-complementary colors differ from the complementary color scheme. The scheme consists of three colors, the original color and two neighbors of the complement color.



179.0050, 12.3225, -32.4534



187.2530, -3.5757, 26.9651



179.5430, -3.7187, -20.6472

Square

The Square scheme is like the rectangle color scheme, but the four colors are evenly spaced on the color wheel.



187.2530, -3.5757, 26.9651



183.3310, -15.4462, 7.6027



178.4800, 5.1864, -30.2390



184.0600, 15.7464, -10.5766

Rectangle

The Rectangle color scheme consists of four colors that form a rectangle on the color wheel.



187.2530, -3.5757, 26.9651



185.7720, -14.1846, 23.0020



178.4800, 5.1864, -30.2390



180.5370, 15.5113, -28.5349

Sweetspot

The Sweet Spot groups the original color and five complimentary colors.



187.2530, -3.5757, 26.9651



244.7130, -1.3375, 9.0217



189.4920, 14.0544, 18.8625



121.8050, -0.8899, 5.4330



0.0000, 0.0000, 0.0000



128.0000, 0.0000, 0.0000

Same Dimension

The Same Dimension uses a secret algorithm to generate beautiful new colors.



187.2530, -3.5757, 26.9651



211.2760, -5.0661, 38.3459



195.2600, -10.9742, 19.9430



102.4030, -1.1847, 6.6626



54.8050, -13.7079, 103.6570



14.5520, -3.7231, 27.5799

Inverse Universe

The Inverse Universe completely reimagines the original color for something new.



187.2530, -3.5757, 26.9651



211.2760, -5.0661, 38.3459



195.7400, 10.9742, -19.9430



102.4030, -1.1847, 6.6626



54.8050, -13.7079, 103.6570



14.5520, -3.7231, 27.5799

Previews

White Background



This preview shows how the YUV color 187.2530, -3.5757, 26.9651 looks on a white background.

Color Contrast Check

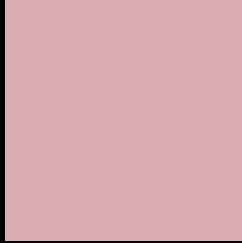
Large Text (above 18pt) WCAG AA × Fail

Any Text WCAG AA × Fail

Large Text (above 18pt) WCAG AAA × Fail

Any Text WCAG AAA × Fail

Black Background



This preview shows how the YUV color 187.2530, -3.5757, 26.9651 looks on a black background.

Color Contrast Check

Large Text (above 18pt) WCAG AA ✓ Pass

Any Text WCAG AA ✓ Pass

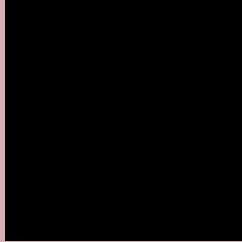
Large Text (above 18pt) WCAG AAA ✓ Pass

Any Text WCAG AAA ✓ Pass

If you want to check with other color combinations, try the [Color Contrast Checker](#).

YUV 187.2530, -3.5757, 26.9651

Background



This preview shows how black text looks on a background with the YUV color 187.2530, -3.5757, 26.9651.



This preview shows how white text looks on a background with the YUV color 187.2530, -3.5757,

Color Blindness Simulation

Color vision deficiency is a very complex topic, and I could not describe the different causes any better than Wikipedia does, so if you want to learn more, you should check out their [article about color blindness](#).

Dichromacy



Original Color

187.2530, -3.5757, 26.9651

Protanopia

185.1250, 0.4314, 1.6444

Deuteranopia

185.8880, -3.3958, 15.8842



Tritanopia

187.5350, -1.2498, 27.5948

Trichromacy



Original Color

187.2530, -3.5757, 26.9651

Protanomaly

185.8380, -0.9061, 10.6661

Deuteranomaly

186.2090, -3.5540, 19.9877

Tritanomaly

187.3070, -2.1234, 27.7948

Monochromacy



Original Color

187.2530, -3.5757, 26.9651

Achromatopsia

187.0000, 0.0000, 0.0000

Achromatomaly

187.0120, -1.4849, 9.6365

CSS Examples

Text

The CSS property to change the color of the text to YUV 187.2530, -3.5757, 26.9651 is called "color". The color property can be set on classes, ids or directly on the HTML element.

This example shows how text in the color `rgb(218, 173, 180)` looks like.

```
.text, #text, p{  
    color:rgb(218, 173, 180)  
}
```

If you want to add a text shadow in that color use the text-shadow property, you can generate a text shadow directly with our [CSS Text Shadow Generator](#).

Here you see how black text with a 4 pixel rgb(218, 173, 180) colored shadow looks like.

```
.shadow{ text-shadow: 4px 4px 2px rgb(218, 173, 180) }
```

Border

The CSS property to change the border of an element to YUV 187.2530, -3.5757, 26.9651 is called "border". The border property can be set on classes, ids or directly on the HTML element.

This example shows the color as border, it can be applied via the CSS property "border" or "border-color".

```
.border, #border, table{ border:4px solid rgb(218, 173, 180) }
```


If only the border color should be changed use the property `border-color`.

```
.border{ border-color:rgb(218, 173, 180) }
```

If you want to add a box shadow in that color use:

Here you see how a box with a 4 pixel `rgb(218, 173, 180)` colored shadow looks like.

```
.boxshadow{ -moz-box-shadow:4px 4px 4px  
4px rgb(218, 173, 180); -webkit-box-  
shadow:4px 4px 4px 4px rgb(218, 173, 180);  
box-shadow:4px 4px 4px 4px rgb(218, 173,  
180) }
```

Background

The CSS property to change the background color of an element to YUV 187.2530, -3.5757, 26.9651 is called "background". The background property can be set on classes, ids or directly on the HTML element.

```
.background, #background, body{  
background: rgb(218, 173, 180) }
```

If only the background color should be changed can be used:

```
.background{ background-color: rgb(218,  
173, 180) }
```

This example shows the color as background, it is applied via the CSS property "background".

To optimize and compress your CSS code, you can use our [online CSS compressor and optimizer](#) based on csstidy. If you want to create a linear or radial gradient as background or border, check our [CSS Gradient Generator](#).

Hey! You found this booklet interesting? Support Converting Colors with the new Membership Option!

The pro membership hides all ads, plus gives you double the colors in the color bucket, and more awesome pro features!

[Learn more, Memberships starting at \\$2.50/m!](#)

**Follow me
on Twitter!**

@ConvertingColor