

Converting Colors

YUV(187.2570, -16.3957,
32.2236)

Have a look what the booklet for
YUV(187.2570, -16.3957, 32.2236)
contains.

YUV(187.2570, -16.3957, 32.2236)	3
<i>Conversions</i>	4
<i>Details</i>	6
<i>Harmonies</i>	12
<i>Previews</i>	24
<i>Color Blindness Simulation</i>	28
<i>CSS Examples</i>	31

Color

**YUV(187.2570, -16.3957,
32.2236)**

Conversions

Conversions Part 1

Format	Color
Hex	E0AF9A
RGB	224, 175, 154
RGB Percent	88%, 69%, 60%
CMY	0.1216, 0.3137, 0.3961
CMYK	0.00, 0.22, 0.31, 0.12
HSL	18°, 53%, 74%
HSV	18°, 31%, 88%
XYZ	51.9032, 48.8403, 37.2634
YIQ	187.2570, 35.9450, 3.8570

Conversions

Conversions Part 2

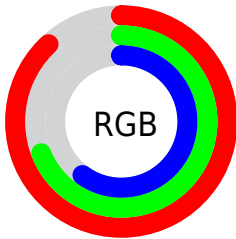
Format	Color
R _Y B	224, 184, 154
Decimal	14725018
CIE Lab	75.35, 14.93, 17.61
CIE LCh	75, 23.083, 49.711
Yxy	48.8403, 0.3761, 0.3539
Android (android.graphics.Color)	4292915098 (0xFFE0AF9A)
YUV	187.2570, -16.3957, 32.2236
Hunter-Lab	69.8859, 10.2690, 17.3065

Details

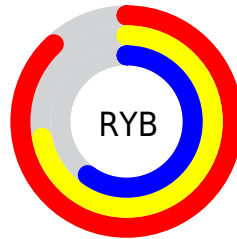
The YUV color $187.2570, -16.3957, 32.2236$ is a light color, and the websafe version is hex $CC9999$. A complement of this color would be $190.7430, 16.3957, -32.2236$, and the grayscale version is $187.0000, 0.0000, 0.0000$.

A 20% lighter version of the original color is $235.5540, -13.5841, 17.0541$, and $133.5880, -15.0799, 30.1793$ is the 20% darker color. If you saturate the color by 10%, you get $175.3570, -21.3750, 42.6599$, and if you desaturate by 10%, it is $199.1570, -11.4164, 21.7873$.

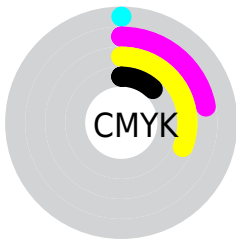
Distribution



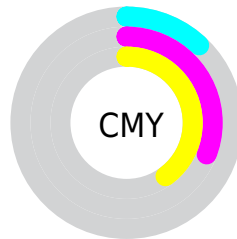
- Red (88%)
- Green (69%)
- Blue (60%)



- Red (88%)
- Yellow (72%)
- Blue (60%)



- Cyan (0%)
- Magenta (22%)
- Yellow (31%)
- Black (12%)



- Cyan (12%)
- Magenta (31%)
- Yellow (40%)

Brightness & Saturation Gradients

These gradients show how the YUV color 187.2570, -16.3957, 32.2236 changes by changing the brightness by 10 percent. The first figure shows a shift by +10% for each color and the second figure -10%.

Similar to the brightness gradients but the following saturation gradients show a change of the YUV color 187.2570, -16.3957, 32.2236 by changing the saturation by 10% instead.

■ 187.2570,
-16.3957, 32.2236

■ 187.2570,
-16.3957, 32.2236

255.0000, 0.0000,
0.0000

■ 159.7730,
-15.6641, 30.8941

■ 235.5540,
-13.5841, 17.0541

■ 133.5880,
-15.0799, 30.1793

■ 252.9480, -7.8624,
1.7996

■ 107.8050,
-14.2009, 28.2350

■ 83.9080, -13.7586,
26.3907

■ 60.1250, -12.8796,
24.4464

■ 37.3420, -12.0006,
22.5021

■ 16.0690, -7.9220,

20.9875

■ 0.0000, 0.0000,
0.0000

■ 187.2570,
-16.3957, 32.2236

■ 187.2570,
-16.3957, 32.2236

■ 175.3570,
-21.3750, 42.6599

■ 199.1570,
-11.4164, 21.7873

■ 163.9300,
-27.0805, 52.6814

■ 210.5840, -5.7109,
11.7658

■ 152.0300,
-32.0598, 63.1177

■ 222.4840, -0.7316,
1.3295

■ 140.0160,
-37.4759, 73.6540

■ 234.4980, 4.6845,
-9.2067

■ 128.7030,
-42.7446, 83.5755

■ 244.5570, 5.1484,
-18.0285

■ 116.8030,
-47.7239, 94.0118

■ 245.7310, 4.5696,
-19.0581

■ 106.3050,
-52.4084, 103.2185

Harmonies

Analogous

The Analogous color harmony consists of three colors that are next to each other on the color wheel.



188.7550, -8.2602, 36.1719



187.2570, -16.3957, 32.2236



185.7410, -20.5783, 20.3981

Triad

The Triadic color harmony groups three colors that are evenly spaced from another and form a triangle on the color wheel.



187.2570, -16.3957, 32.2236



177.6770, -0.3338, -33.0427



186.8910, 18.7877, -6.0434

Complementary

The Complementary color scheme is a pair of colors which are on the opposite of each other on the color wheel.



187.2570, -16.3957, 32.2236



190.7430, 16.3957, -32.2236

Split Complementary

Split-complementary colors differ from the complementary color scheme. The scheme consists of three colors, the original color and two neighbors of the complement color.



182.5570, 21.9104, -27.6755



187.2570, -16.3957, 32.2236



176.8850, 10.9027, -43.7491

Square

The Square scheme is like the rectangle color scheme, but the four colors are evenly spaced on the color wheel.



187.2570, -16.3957, 32.2236



180.6270, -11.1551, -15.4589



178.0730, 19.1910, -42.1600



189.1880, 11.7393, 14.7441

Rectangle

The Rectangle color scheme consists of four colors that form a rectangle on the color wheel.



187.2570, -16.3957, 32.2236



183.9030, -19.6722, 9.7321



178.0730, 19.1910, -42.1600



185.3030, 20.5566, -13.4207

Sweetspot

The Sweet Spot groups the original color and five complimentary colors.



187.2570, -16.3957, 32.2236



242.9860, -5.4161, 10.5363



180.5160, 11.0846, 38.1355



120.4200, -3.6581, 6.6477



0.0000, 0.0000, 0.0000



128.0000, 0.0000, 0.0000

Same Dimension

The Same Dimension uses a secret algorithm to generate beautiful new colors.



187.2570, -16.3957, 32.2236



204.0260, -22.6908, 44.7042



207.8020, -26.5244, 14.2056



106.0500, -2.4896, 5.2182



83.7350, -41.2814, 80.9164



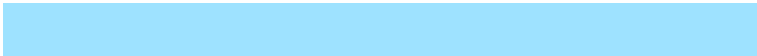
23.1570, -11.4164, 21.7873

Inverse Universe

The Inverse Universe completely reimagines the original color for something new.



190.7430, 16.3957, -32.2236



208.9740, 22.6908, -44.7042



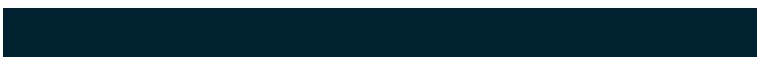
170.1980, 26.5244, -14.2056



106.9500, 2.4897, -5.2181



92.2650, 41.2814, -80.9164



25.4300, 11.1270, -22.3021

Previews

White Background



This preview shows how the YUV color 187.2570, -16.3957, 32.2236 looks on a white background.

Color Contrast Check

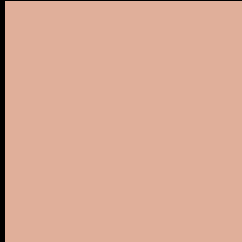
Large Text (above 18pt) WCAG AA × Fail

Any Text WCAG AA × Fail

Large Text (above 18pt) WCAG AAA × Fail

Any Text WCAG AAA × Fail

Black Background



This preview shows how the YUV color 187.2570, -16.3957, 32.2236 looks on a black background.

Color Contrast Check

Large Text (above 18pt) WCAG AA ✓ Pass

Any Text WCAG AA ✓ Pass

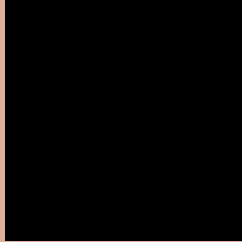
Large Text (above 18pt) WCAG AAA ✓ Pass

Any Text WCAG AAA ✓ Pass

If you want to check with other color combinations, try the [Color Contrast Checker](#).

YUV 187.2570, -16.3957, 32.2236

Background



This preview shows how black text looks on a background with the YUV color 187.2570, -16.3957, 32.2236.



This preview shows how white text looks on a background with the YUV color 187.2570, -16.3957, 32.2236.

Color Blindness Simulation

Color vision deficiency is a very complex topic, and I could not describe the different causes any better than Wikipedia does, so if you want to learn more, you should check out their [article about color blindness](#).

Dichromacy



Original Color

187.2570, -16.3957, 32.2236

Protanopia

185.0260, -12.8308, 8.7472

Deuteranopia

186.8000, -16.6634, 24.7314



Tritanopia

189.2260, -2.5764, 33.1278

Trichromacy



Original Color

187.2570, -16.3957, 32.2236

Protanomaly

185.7390, -14.1683, 17.7689

Deuteranomaly

187.1100, -16.8162, 27.0905

Tritanomaly

188.2600, -7.5232, 33.0980

Monochromacy



Original Color

187.2570, -16.3957, 32.2236

Achromatopsia

187.0000, 0.0000, 0.0000

Achromatomaly

187.1710, -6.0003, 11.2510

CSS Examples

Text

The CSS property to change the color of the text to YUV 187.2570, -16.3957, 32.2236 is called "color". The color property can be set on classes, ids or directly on the HTML element.

This example shows how text in the color `rgb(224, 175, 154)` looks like.

```
.text, #text, p{  
    color:rgb(224, 175, 154)  
}
```

If you want to add a text shadow in that color use the text-shadow property, you can generate a text shadow directly with our [CSS Text Shadow Generator](#).

Here you see how black text with a 4 pixel rgb(224, 175, 154) colored shadow looks like.

```
.shadow{ text-shadow: 4px 4px 2px rgb(224, 175, 154) }
```

Border

The CSS property to change the border of an element to YUV 187.2570, -16.3957, 32.2236 is called "border".

The border property can be set on classes, ids or directly on the HTML element.

This example shows the color as border, it can be applied via the CSS property "border" or "border-color".

```
.border, #border, table{ border:4px solid rgb(224, 175, 154) }
```


If only the border color should be changed use the property `border-color`.

```
.border{ border-color:rgb(224, 175, 154) }
```

If you want to add a box shadow in that color use:

Here you see how a box with a 4 pixel `rgb(224, 175, 154)` colored shadow looks like.

```
.boxshadow{ -moz-box-shadow:4px 4px 4px  
4px rgb(224, 175, 154); -webkit-box-  
shadow:4px 4px 4px 4px rgb(224, 175, 154);  
box-shadow:4px 4px 4px 4px rgb(224, 175,  
154) }
```

Background

The CSS property to change the background color of an element to YUV 187.2570, -16.3957, 32.2236 is called "background". The background property can be set on classes, ids or directly on the HTML element.

```
.background, #background, body{  
background: rgb(224, 175, 154) }
```

If only the background color should be changed can be used:

```
.background{ background-color: rgb(224,  
175, 154) }
```

This example shows the color as background, it is applied via the CSS property "background".

To optimize and compress your CSS code, you can use our [online CSS compressor and optimizer](#) based on csstidy. If you want to create a linear or radial gradient as background or border, check our [CSS Gradient Generator](#).

Hey! You found this booklet interesting? Support Converting Colors with the new Membership Option!

The pro membership hides all ads, plus gives you double the colors in the color bucket, and more awesome pro features!

[Learn more, Memberships starting at \\$2.50/m!](#)

**Follow me
on Twitter!**

@ConvertingColor