

# Converting Colors

YUV(187.5510, -19.0056,  
29.3348)

Have a look what the booklet for  
YUV(187.5510, -19.0056, 29.3348)  
contains.

<b>YUV(187.5510, -19.0056, 29.3348)</b> .....	3
<b><i>Conversions</i></b> .....	4
<b><i>Details</i></b> .....	6
<b><i>Harmonies</i></b> .....	12
<b><i>Previews</i></b> .....	24
<b><i>Color Blindness Simulation</i></b> .....	28
<b><i>CSS Examples</i></b> .....	31

# Color

**YUV(187.5510, -19.0056,  
29.3348)**

# Conversions

## Conversions Part 1

Format	Color
Hex	DDB295
RGB	221, 178, 149
RGB Percent	87%, 70%, 58%
CMY	0.1333, 0.3020, 0.4157
CMYK	0.00, 0.19, 0.33, 0.13
HSL	24°, 51%, 73%
HSV	24°, 33%, 87%
XYZ	51.1640, 49.3829, 35.2690
YIQ	187.5510, 34.9370, 0.0970

# Conversions

## Conversions Part 2

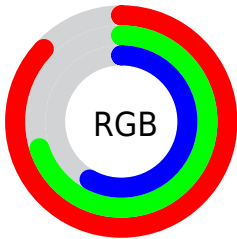
Format	Color
<a href="#">RYB</a>	<a href="#">221, 198, 149</a>
Decimal	<a href="#">14529173</a>
<a href="#">CIELab</a>	<a href="#">75.69, 11.52, 20.73</a>
<a href="#">CIELCh</a>	<a href="#">76, 23.719, 60.929</a>
<a href="#">Yxy</a>	<a href="#">49.3829, 0.3767, 0.3636</a>
Android (android.graphics.Color)	<a href="#">4292719253</a> ( <a href="#">0xFFDDB295</a> )
<a href="#">YUV</a>	<a href="#">187.5510, -19.0056, 29.3348</a>
<a href="#">Hunter-Lab</a>	<a href="#">70.2729, 6.9838, 19.4343</a>

# Details

The YUV color  $187.5510, -19.0056, 29.3348$  is a light color, and the websafe version is hex `FFCC99`. A complement of this color would be  $182.4490, 19.0056, -29.3348$ , and the grayscale version is  $188.0000, 0.0000, 0.0000$ .

A 20% lighter version of the original color is  $236.7450, -16.6363, 16.0096$ , and  $133.8820, -17.6898, 27.2905$  is the 20% darker color. If you saturate the color by 10%, you get  $177.4120, -24.8531, 38.2267$ , and if you desaturate by 10%, it is  $197.6900, -13.1582, 20.4429$ .

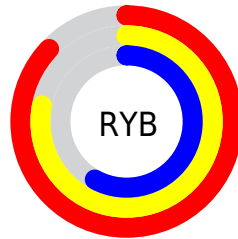
# Distribution



Red (87%)

Green (70%)

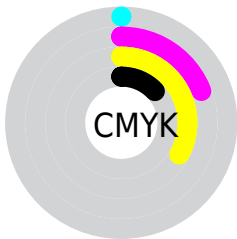
Blue (58%)



Red (87%)

Yellow (78%)

Blue (58%)

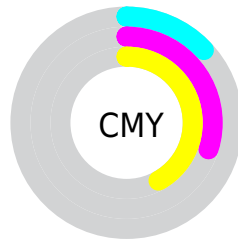


Cyan (0%)

Magenta (19%)

Yellow (33%)

Black (13%)



Cyan (13%)

Magenta (30%)

Yellow (42%)

# Brightness & Saturation Gradients

These gradients show how the YUV color 187.5510, -19.0056, 29.3348 changes by changing the brightness by 10 percent. The first figure shows a shift by +10% for each color and the second figure -10%.

Similar to the brightness gradients but the following saturation gradients show a change of the YUV color 187.5510, -19.0056, 29.3348 by changing the saturation by 10% instead.



■ 187.5510,  
-19.0056, 29.3348

■ 187.5510,  
-19.0056, 29.3348

255.0000, 0.0000,  
0.0000

■ 160.3660,  
-18.4214, 28.6200

■ 236.7450,  
-16.6363, 16.0096

■ 133.8820,  
-17.6898, 27.2905

■ 252.2640,  
-10.4832, 2.3995

■ 108.3980,  
-16.9582, 25.9610

■ 83.6150, -16.0792,  
24.0166

■ 60.5330, -15.0528,  
21.4576

■ 37.7070, -15.6316,  
20.4280

■ 17.5200, -8.6374,

17.0840

■ 0.0000, 0.0000,  
0.0000

■ 187.5510,  
-19.0056, 29.3348

■ 187.5510,  
-19.0056, 29.3348

■ 177.4120,  
-24.8531, 38.2267

■ 197.6900,  
-13.1582, 20.4429

■ 167.2730,  
-30.7006, 47.1186

■ 207.8290, -7.3107,  
11.5510

■ 156.5470,  
-36.2587, 56.5253

■ 218.5550, -1.7526,  
2.1443

■ 146.4080,  
-42.1061, 65.4172

■ 228.6940, 4.0949,  
-6.7476

■ 136.2690,  
-47.9536, 74.3091

■ 238.3770, 8.1951,  
-15.2396

■ 126.0160,  
-54.2379, 83.3010

■ 244.8340, 5.0118,  
-20.9024

■ 118.3220,  
-58.3327, 90.0486

# Harmonies

## Analogous

The Analogous color harmony consists of three colors that are next to each other on the color wheel.



188.8430, -11.7546, 36.9717



187.5510, -19.0056, 29.3348



185.2950, -20.8514, 14.6503

# Triad

The Triadic color harmony groups three colors that are evenly spaced from another and form a triangle on the color wheel.



187.5510, -19.0056, 29.3348



177.7840, 4.0505, -39.2756



188.8920, 17.3082, 1.8487

# Complementary

The Complementary color scheme is a pair of colors which are on the opposite of each other on the color wheel.



187.5510, -19.0056, 29.3348



182.4490, 19.0056, -29.3348

# Split Complementary

Split-complementary colors differ from the complementary color scheme. The scheme consists of three colors, the original color and two neighbors of the complement color.



184.7150, 22.3255, -20.7981



187.5510, -19.0056, 29.3348



177.3130, 15.1287, -45.8785

# Square

The Square scheme is like the rectangle color scheme, but the four colors are evenly spaced on the color wheel.



187.5510, -19.0056, 29.3348



180.4950, -7.6390, -23.2361



180.0780, 21.6535, -38.6564



190.1350, 8.8074, 21.8066



# Rectangle

The Rectangle color scheme consists of four colors that form a rectangle on the color wheel.



187.5510, -19.0056, 29.3348



183.9730, -19.2137, 2.6547



180.0780, 21.6535, -38.6564



187.4180, 19.5139, -5.6286

# Sweetspot

The Sweet Spot groups the original color and five complimentary colors.



187.5510, -19.0056, 29.3348



243.3450, -6.5791, 10.2214



175.4300, 8.1690, 39.9649



120.3060, -4.0949, 6.7476



0.0000, 0.0000, 0.0000



128.0000, 0.0000, 0.0000



# Same Dimension

The Same Dimension uses a secret algorithm to generate beautiful new colors.



187.5510, -19.0056, 29.3348



209.0810, -26.1689, 40.2710



208.6830, -29.4237, 10.8020



104.6370, -2.7790, 4.7034



92.8170, -45.7588, 70.3205



24.3200, -11.9898, 19.0134

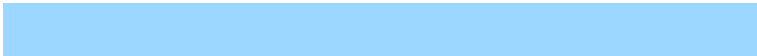


# Inverse Universe

The Inverse Universe completely reimagines the original color for something new.



182.4490, 19.0056, -29.3348



201.9190, 26.1689, -40.2710



161.3170, 29.4237, -10.8020



103.7760, 3.0684, -4.1886



80.7700, 45.4694, -70.8353



21.0930, 12.2792, -18.4986



# Previews

## White Background



This preview shows how the YUV color 187.5510, -19.0056, 29.3348 looks on a white background.

## Color Contrast Check

Large Text (above 18pt) WCAG AA × Fail

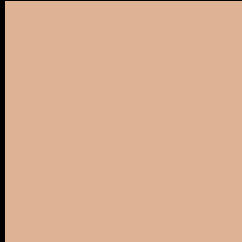
Any Text WCAG AA × Fail

Large Text (above 18pt) WCAG AAA × Fail

Any Text WCAG AAA × Fail



# Black Background



This preview shows how the YUV color 187.5510, -19.0056, 29.3348 looks on a black background.

## Color Contrast Check

Large Text (above 18pt) WCAG AA ✓ Pass

Any Text WCAG AA ✓ Pass

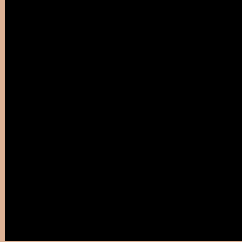
Large Text (above 18pt) WCAG AAA ✓ Pass

Any Text WCAG AAA ✓ Pass

If you want to check with other color combinations, try the [Color Contrast Checker](#).

# YUV 187.5510, -19.0056, 29.3348

## Background



This preview shows how black text looks on a background with the YUV color 187.5510, -19.0056, 29.3348.



This preview shows how white text looks on a background with the YUV color 187.5510, -19.0056,

29.3348.

# Color Blindness Simulation

Color vision deficiency is a very complex topic, and I could not describe the different causes any better than Wikipedia does, so if you want to learn more, you should check out their [article about color blindness](#).

## Dichromacy



### Original Color

187.5510, -19.0056, 29.3348

### Protanopia

185.8260, -16.1832, 10.6766

### Deuteranopia

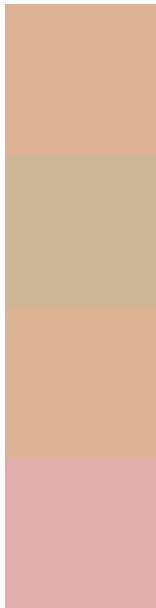
187.2410, -18.8528, 26.9756



## Tritanopia

190.0300, -1.9868, 30.6687

# Trichromacy



## Original Color

187.5510, -19.0056, 29.3348

## Protanomaly

186.3430, -16.9311, 17.2392

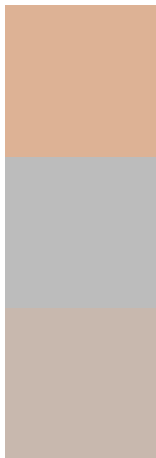
## Deuteranomaly

187.5400, -19.0002, 27.5904

## Tritanomaly

189.4230, -8.0965, 30.3240

# Monochromacy



## Original Color

187.5510, -19.0056, 29.3348

## Achromatopsia

188.0000, 0.0000, 0.0000

## Achromatomaly

187.6440, -6.7265, 10.8362

# CSS Examples

## Text

The CSS property to change the color of the text to YUV 187.5510, -19.0056, 29.3348 is called "color". The color property can be set on classes, ids or directly on the HTML element.

This example shows how text in the color `rgb(221, 178, 149)` looks like.

```
.text, #text, p{  
    color:rgb(221, 178, 149)  
}
```

If you want to add a text shadow in that color use the text-shadow property, you can generate a text shadow directly with our [CSS Text Shadow Generator](#).

Here you see how black text with a 4 pixel rgb(221, 178, 149) colored shadow looks like.

```
.shadow{ text-shadow: 4px 4px 2px rgb(221, 178, 149) }
```

## Border

The CSS property to change the border of an element to YUV 187.5510, -19.0056, 29.3348 is called "border".

The border property can be set on classes, ids or directly on the HTML element.

This example shows the color as border, it can be applied via the CSS property "border" or "border-color".

```
.border, #border, table{ border:4px solid rgb(221, 178, 149) }
```



If only the border color should be changed use the property `border-color`.

```
.border{ border-color:rgb(221, 178, 149) }
```

If you want to add a box shadow in that color use:

Here you see how a box with a 4 pixel `rgb(221, 178, 149)` colored shadow looks like.

```
.boxshadow{ -moz-box-shadow:4px 4px 4px 4px rgb(221, 178, 149); -webkit-box-shadow:4px 4px 4px 4px rgb(221, 178, 149); box-shadow:4px 4px 4px 4px rgb(221, 178, 149) }
```

# Background

The CSS property to change the background color of an element to YUV 187.5510, -19.0056, 29.3348 is called "background". The background property can be set on classes, ids or directly on the HTML element.

```
.background, #background, body{  
background: rgb(221, 178, 149) }
```

If only the background color should be changed can be used:

```
.background{ background-color: rgb(221,  
178, 149) }
```

This example shows the color as background, it is applied via the CSS property "background".

To optimize and compress your CSS code, you can use our [online CSS compressor and optimizer](#) based on csstidy. If you want to create a linear or radial gradient as background or border, check our [CSS Gradient Generator](#).

Hey! You found this booklet interesting? Support Converting Colors with the new Membership Option!

The pro membership hides all ads, plus gives you double the colors in the color bucket, and more awesome pro features!

**[Learn more, Memberships starting at \\$2.50/m!](#)**

**Follow me  
on Twitter!**

@ConvertingColor