

Converting Colors

YUV(187.5610, -0.7696,
13.5400)

Have a look what the booklet for
YUV(187.5610, -0.7696, 13.5400)
contains.

YUV(187.5610, -0.7696, 13.5400)	3
<i>Conversions</i>	4
<i>Details</i>	6
<i>Harmonies</i>	12
<i>Previews</i>	24
<i>Color Blindness Simulation</i>	28
<i>CSS Examples</i>	31

Color

**YUV(187.5610, -0.7696,
13.5400)**

Conversions

Conversions Part 1

Format	Color
Hex	CBB4BA
RGB	203, 180, 186
RGB Percent	80%, 71%, 73%
CMY	0.2039, 0.2941, 0.2706
CMYK	0.00, 0.11, 0.08, 0.20
HSL	344°, 18%, 75%
HSV	344°, 11%, 80%
XYZ	49.8128, 48.8842, 53.2646
YIQ	187.5610, 11.7820, 6.7420

Conversions

Conversions Part 2

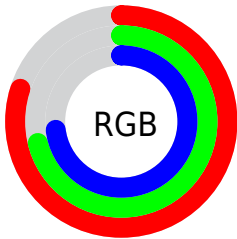
Format	Color
R _Y B	203, 180, 186
Decimal	13350074
CIE Lab	75.38, 9.25, -0.04
CIE LCh	75, 9.247, 359.768
Yxy	48.8842, 0.3278, 0.3217
Android (android.graphics.Color)	4291540154 (0xFFCBB4BA)
YUV	187.5610, -0.7696, 13.5400
Hunter-Lab	69.9172, 4.8178, 3.7736

Details

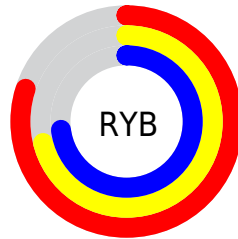
The YUV color $187.5610, -0.7696, 13.5400$ is a light color, and the websafe version is hex `CCCCCC`. A complement of this color would be $195.4390, 0.7696, -13.5400$, and the grayscale version is $188.0000, 0.0000, 0.0000$.

A 20% lighter version of the original color is $242.3650, -0.1799, 11.0809$, and $134.2620, -0.6222, 12.9252$ is the 20% darker color. If you saturate the color by 10%, you get $174.1110, -1.5337, 25.3357$, and if you desaturate by 10%, it is $201.0110, -0.0054, 1.7444$.

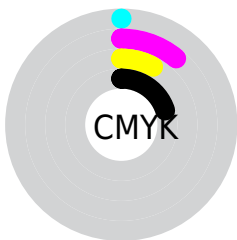
Distribution



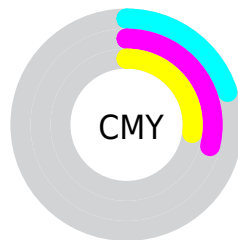
- Red (80%)
- Green (71%)
- Blue (73%)



- Red (80%)
- Yellow (71%)
- Blue (73%)



- Cyan (0%)
- Magenta (11%)
- Yellow (8%)
- Black (20%)



- Cyan (20%)
- Magenta (29%)
- Yellow (27%)

Brightness & Saturation Gradients

These gradients show how the YUV color 187.5610, -0.7696, 13.5400 changes by changing the brightness by 10 percent. The first figure shows a shift by +10% for each color and the second figure -10%.

Similar to the brightness gradients but the following saturation gradients show a change of the YUV color 187.5610, -0.7696, 13.5400 by changing the saturation by 10% instead.

■ 187.5610, -0.7696,
13.5400

■ 187.5610, -0.7696,
13.5400

255.0000, 0.0000,
0.0000

■ 160.5610, -0.7696,
13.5400

■ 242.3650, -0.1799,
11.0809

■ 134.2620, -0.6222,
12.9252

■ 108.9630, -0.4748,
12.3104

■ 84.6640, -0.3274,
11.6957

■ 61.2510, -0.6167,
11.1809

■ 39.6530, -0.3219,
9.9513

■ 18.0660, -0.0325,

10.4661

■ 0.0000, 0.0000,
0.0000

■ 187.5610, -0.7696,
13.5400

■ 187.5610, -0.7696,
13.5400

■ 174.1110, -1.5337,
25.3357

■ 201.0110, -0.0054,
1.7444

■ 160.0740, -2.0085,
37.6461

■ 215.0480, 0.4693,
-10.5661

■ 146.6240, -2.7726,
49.4418

■ 228.4980, 1.2335,
-22.3617

■ 133.1740, -3.5368,
61.2374

■ 238.4260, 3.7340,
-31.0686

■ 119.7240, -4.3009,
73.0331

■ 239.4520, 7.6652,
-31.9684

■ 105.6870, -4.7757,
85.3435

■ 92.2370, -5.5398,
97.1392

■ 78.7870, -6.3040,
108.9348

■ 66.7390, -6.7733,
119.5009

Harmonies

Analogous

The Analogous color harmony consists of three colors that are next to each other on the color wheel.



187.2660, 3.3199, 8.5367



187.5610, -0.7696, 13.5400



186.9480, -4.4114, 14.9546

Triad

The Triadic color harmony groups three colors that are evenly spaced from another and form a triangle on the color wheel.



187.5610, -0.7696, 13.5400



184.5670, -6.6885, -1.3743



183.9750, 7.9003, -14.0101

Complementary

The Complementary color scheme is a pair of colors which are on the opposite of each other on the color wheel.



187.5610, -0.7696, 13.5400



195.4390, 0.7696, -13.5400

Split Complementary

Split-complementary colors differ from the complementary color scheme. The scheme consists of three colors, the original color and two neighbors of the complement color.



182.9810, 5.4324, -15.7693



187.5610, -0.7696, 13.5400



183.7340, -3.3199, -8.5367

Square

The Square scheme is like the rectangle color scheme, but the four colors are evenly spaced on the color wheel.



187.5610, -0.7696, 13.5400



185.5680, -8.1680, 6.5179



183.1400, 0.9170, -14.1548



185.1330, 8.3154, -7.1326

Rectangle

The Rectangle color scheme consists of four colors that form a rectangle on the color wheel.



187.5610, -0.7696, 13.5400



186.9540, -6.8793, 13.1953



183.1400, 0.9170, -14.1548



184.0350, 6.8847, -14.9397

Sweetspot

The Sweet Spot groups the original color and five complimentary colors.



187.5610, -0.7696, 13.5400



249.6200, -0.3057, 4.7183



187.7050, 7.5404, 8.1517



124.0220, -0.0108, 3.4887



0.0000, 0.0000, 0.0000



128.0000, 0.0000, 0.0000

Same Dimension

The Same Dimension uses a secret algorithm to generate beautiful new colors.



187.5610, -0.7696, 13.5400



230.9040, -0.9387, 21.1322



189.8120, -4.8373, 11.5659



95.2180, -0.6005, 5.9478



54.5360, -5.6872, 97.7539



12.5020, -1.2335, 22.3617

Inverse Universe

The Inverse Universe completely reimagines the original color for something new.



187.5610, -0.7696, 13.5400



230.9040, -0.9387, 21.1322



193.1880, 4.8373, -11.5659



95.2180, -0.6005, 5.9478



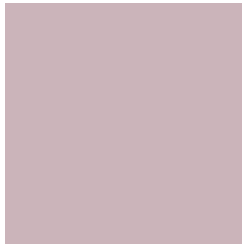
54.5360, -5.6872, 97.7539



12.5020, -1.2335, 22.3617

Previews

White Background



This preview shows how the YUV color 187.5610, -0.7696, 13.5400 looks on a white background.

Color Contrast Check

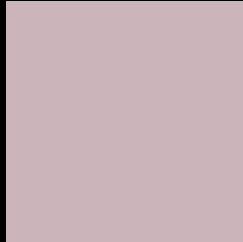
Large Text (above 18pt) WCAG AA × Fail

Any Text WCAG AA × Fail

Large Text (above 18pt) WCAG AAA × Fail

Any Text WCAG AAA × Fail

Black Background



This preview shows how the YUV color 187.5610, -0.7696, 13.5400 looks on a black background.

Color Contrast Check

Large Text (above 18pt) WCAG AA ✓ Pass

Any Text WCAG AA ✓ Pass

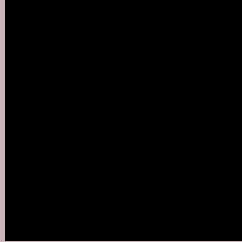
Large Text (above 18pt) WCAG AAA ✓ Pass

Any Text WCAG AAA ✓ Pass

If you want to check with other color combinations, try the [Color Contrast Checker](#).

YUV 187.5610, -0.7696, 13.5400

Background



This preview shows how black text looks on a background with the YUV color 187.5610, -0.7696, 13.5400.



This preview shows how white text looks on a background with the YUV color 187.5610, -0.7696,

Color Blindness Simulation

Color vision deficiency is a very complex topic, and I could not describe the different causes any better than Wikipedia does, so if you want to learn more, you should check out their [article about color blindness](#).

Dichromacy



Original Color

187.5610, -0.7696, 13.5400

Protanopia

186.3530, 1.3050, 1.4444

Deuteranopia

187.5610, -0.7696, 13.5400



Tritanopia

188.0710, 2.4300, 13.9697

Trichromacy



Original Color

187.5610, -0.7696, 13.5400

Protanomaly

186.5600, 0.7099, 5.6479

Deuteranomaly

187.5610, -0.7696, 13.5400

Tritanomaly

187.7290, 1.1196, 14.2697

Monochromacy



Original Color

187.5610, -0.7696, 13.5400

Achromatopsia

188.0000, 0.0000, 0.0000

Achromatomaly

187.6200, -0.3057, 4.7183

CSS Examples

Text

The CSS property to change the color of the text to YUV 187.5610, -0.7696, 13.5400 is called "color". The color property can be set on classes, ids or directly on the HTML element.

This example shows how text in the color `rgb(203, 180, 186)` looks like.

```
.text, #text, p{  
    color:rgb(203, 180, 186)  
}
```

If you want to add a text shadow in that color use the text-shadow property, you can generate a text shadow directly with our [CSS Text Shadow Generator](#).

Here you see how black text with a 4 pixel rgb(203, 180, 186) colored shadow looks like.

```
.shadow{ text-shadow: 4px 4px 2px rgb(203, 180, 186) }
```

Border

The CSS property to change the border of an element to YUV 187.5610, -0.7696, 13.5400 is called "border". The border property can be set on classes, ids or directly on the HTML element.

This example shows the color as border, it can be applied via the CSS property "border" or "border-color".

```
.border, #border, table{ border:4px solid rgb(203, 180, 186) }
```


If only the border color should be changed use the property `border-color`.

```
.border{ border-color:rgb(203, 180, 186) }
```

If you want to add a box shadow in that color use:

Here you see how a box with a 4 pixel `rgb(203, 180, 186)` colored shadow looks like.

```
.boxshadow{ -moz-box-shadow:4px 4px 4px  
4px rgb(203, 180, 186); -webkit-box-  
shadow:4px 4px 4px 4px rgb(203, 180, 186);  
box-shadow:4px 4px 4px 4px rgb(203, 180,  
186) }
```

Background

The CSS property to change the background color of an element to YUV 187.5610, -0.7696, 13.5400 is called "background". The background property can be set on classes, ids or directly on the HTML element.

```
.background, #background, body{  
background: rgb(203, 180, 186) }
```

If only the background color should be changed can be used:

```
.background{ background-color: rgb(203,  
180, 186) }
```

This example shows the color as background, it is applied via the CSS property "background".

To optimize and compress your CSS code, you can use our [online CSS compressor and optimizer](#) based on csstidy. If you want to create a linear or radial gradient as background or border, check our [CSS Gradient Generator](#).

Hey! You found this booklet interesting? Support Converting Colors with the new Membership Option!

The pro membership hides all ads, plus gives you double the colors in the color bucket, and more awesome pro features!

[Learn more, Memberships starting at \\$2.50/m!](#)

**Follow me
on Twitter!**

@ConvertingColor