

Converting Colors

YUV(187.6100, -15.0907,
33.6680)

Have a look what the booklet for
YUV(187.6100, -15.0907, 33.6680)
contains.

YUV(187.6100, -15.0907, 33.6680)	3
<i>Conversions</i>	4
<i>Details</i>	6
<i>Harmonies</i>	12
<i>Previews</i>	24
<i>Color Blindness Simulation</i>	28
<i>CSS Examples</i>	31

Color

**YUV(187.6100, -15.0907,
33.6680)**

Conversions

Conversions Part 1

Format	Color
Hex	E2AE9D
RGB	226, 174, 157
RGB Percent	89%, 68%, 62%
CMY	0.1137, 0.3176, 0.3843
CMYK	0.00, 0.23, 0.31, 0.11
HSL	15°, 54%, 75%
HSV	15°, 31%, 89%
XYZ	52.5859, 48.8752, 38.5606
YIQ	187.6100, 36.4490, 5.7370

Conversions

Conversions Part 2

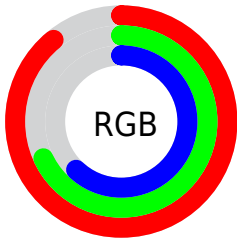
Format	Color
R _Y B	226, 180, 157
Decimal	14855837
CIE Lab	75.37, 16.62, 16.04
CIE LCh	75, 23.096, 43.988
Yxy	48.8752, 0.3756, 0.3491
Android (android.graphics.Color)	4293045917 (0xFFE2AE9D)
YUV	187.6100, -15.0907, 33.6680
Hunter-Lab	69.9108, 11.9213, 16.2351

Details

The YUV color **187.6100, -15.0907, 33.6680** is a light color, and the websafe version is hex **CC9999**. A complement of this color would be **195.3900, 15.0907, -33.6680**, and the grayscale version is **188.0000, 0.0000, 0.0000**.

A 20% lighter version of the original color is **235.4230, -11.5475, 17.1690**, and **133.6420, -13.6275, 31.0090** is the 20% darker color. If you saturate the color by 10%, you get **175.0090, -20.2174, 44.7191**, and if you desaturate by 10%, it is **200.2110, -9.9640, 22.6170**.

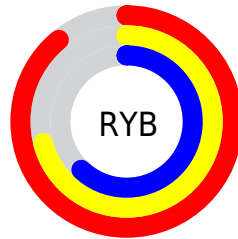
Distribution



Red (89%)

Green (68%)

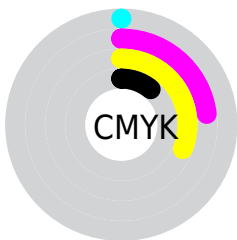
Blue (62%)



Red (89%)

Yellow (71%)

Blue (62%)

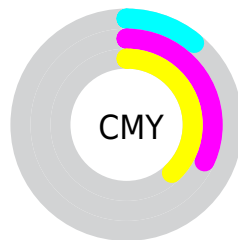


Cyan (0%)

Magenta (23%)

Yellow (31%)

Black (11%)



Cyan (11%)

Magenta (32%)

Yellow (38%)

Brightness & Saturation Gradients

These gradients show how the YUV color 187.6100, -15.0907, 33.6680 changes by changing the brightness by 10 percent. The first figure shows a shift by +10% for each color and the second figure -10%.

Similar to the brightness gradients but the following saturation gradients show a change of the YUV color 187.6100, -15.0907, 33.6680 by changing the saturation by 10% instead.

■ 187.6100,
-15.0907, 33.6680

■ 187.6100,
-15.0907, 33.6680

255.0000, 0.0000,
0.0000

■ 160.1260,
-14.3591, 32.3385

■ 235.4230,
-11.5475, 17.1690

■ 133.6420,
-13.6275, 31.0090

■ 253.2900, -6.5520,
1.4997

■ 108.0440,
-13.3327, 29.7794

■ 83.2610, -12.4537,
27.8351

■ 60.4780, -11.5747,
25.8908

■ 37.6950, -10.6956,
23.9465

■ 15.7810, -7.7800,

22.1171

■ 0.0000, 0.0000,
0.0000

■ 187.6100,
-15.0907, 33.6680

■ 187.6100,
-15.0907, 33.6680

■ 175.0090,
-20.2174, 44.7191

■ 200.2110, -9.9640,
22.6170

■ 162.5220,
-24.9073, 55.6702

■ 212.6980, -5.2741,
11.6659

■ 149.9210,
-30.0341, 66.7213

■ 225.2990, -0.1474,
0.6148

■ 137.4340,
-34.7240, 77.6724

■ 237.7860, 4.5425,
-10.3363

■ 124.8330,
-39.8507, 88.7235

■ 246.3290, 4.2748,
-17.8285

■ 112.2320,
-44.9774, 99.7745

■ 100.4460,
-49.5199, 110.1109

Harmonies

Analogous

The Analogous color harmony consists of three colors that are next to each other on the color wheel.



189.2110, -6.5130, 35.7720



187.6100, -15.0907, 33.6680



185.5780, -20.0050, 23.1721

Triad

The Triadic color harmony groups three colors that are evenly spaced from another and form a triangle on the color wheel.



187.6100, -15.0907, 33.6680



178.4170, -2.6706, -30.1837



185.9120, 20.2564, -10.4468

Complementary

The Complementary color scheme is a pair of colors which are on the opposite of each other on the color wheel.



187.6100, -15.0907, 33.6680



195.3900, 15.0907, -33.6680

Split Complementary

Split-complementary colors differ from the complementary color scheme. The scheme consists of three colors, the original color and two neighbors of the complement color.



181.5350, 21.9212, -31.1642



187.6100, -15.0907, 33.6680



176.7280, 9.0081, -42.7345

Square

The Square scheme is like the rectangle color scheme, but the four colors are evenly spaced on the color wheel.



187.6100, -15.0907, 33.6680



180.8940, -12.7657, -12.1850



177.7200, 17.8860, -43.6044



188.6220, 13.4974, 10.8555

Rectangle

The Rectangle color scheme consists of four colors that form a rectangle on the color wheel.



187.6100, -15.0907, 33.6680



184.3980, -20.4092, 12.8060



177.7200, 17.8860, -43.6044



184.7970, 21.2991, -18.2390

Sweetspot

The Sweet Spot groups the original color and five complimentary colors.



187.6100, -15.0907, 33.6680



242.3990, -5.1267, 11.0511



183.6730, 12.9792, 37.1208



119.8330, -3.3687, 7.1625



0.0000, 0.0000, 0.0000



128.0000, 0.0000, 0.0000

Same Dimension

The Same Dimension uses a secret algorithm to generate beautiful new colors.



187.6100, -15.0907, 33.6680



202.6070, -20.5123, 45.9487



207.5680, -24.9300, 16.1649



106.0500, -2.4896, 5.2182



77.8650, -38.3874, 86.0644



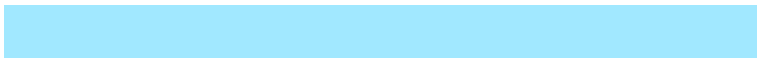
21.3960, -10.5482, 23.3317

Inverse Universe

The Inverse Universe completely reimagines the original color for something new.



195.3900, 15.0907, -33.6680



213.3930, 20.5123, -45.9487



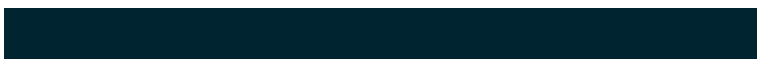
175.4320, 24.9300, -16.1649



106.9500, 2.4897, -5.2181



98.1350, 38.3874, -86.0644



27.1910, 10.2588, -23.8465

Previews

White Background



This preview shows how the YUV color 187.6100, -15.0907, 33.6680 looks on a white background.

Color Contrast Check

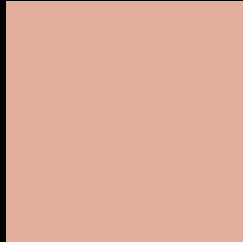
Large Text (above 18pt) WCAG AA × Fail

Any Text WCAG AA × Fail

Large Text (above 18pt) WCAG AAA × Fail

Any Text WCAG AAA × Fail

Black Background



This preview shows how the YUV color 187.6100, -15.0907, 33.6680 looks on a black background.

Color Contrast Check

Large Text (above 18pt) WCAG AA ✓ Pass

Any Text WCAG AA ✓ Pass

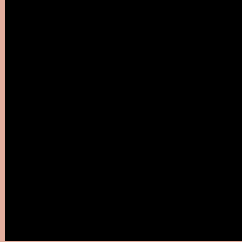
Large Text (above 18pt) WCAG AAA ✓ Pass

Any Text WCAG AAA ✓ Pass

If you want to check with other color combinations, try the [Color Contrast Checker](#).

YUV 187.6100, -15.0907, 33.6680

Background



This preview shows how black text looks on a background with the YUV color 187.6100, -15.0907, 33.6680.



This preview shows how white text looks on a background with the YUV color 187.6100, -15.0907, 33.6680.

33.6680.

Color Blindness Simulation

Color vision deficiency is a very complex topic, and I could not describe the different causes any better than Wikipedia does, so if you want to learn more, you should check out their [article about color blindness](#).

Dichromacy



Original Color

187.6100, -15.0907, 33.6680

Protanopia

185.4820, -11.0836, 8.3473

Deuteranopia

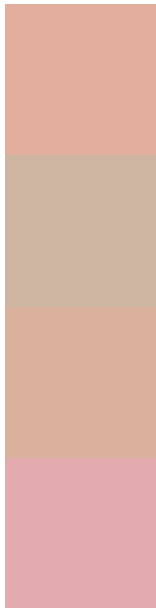
186.8430, -15.2056, 23.8167



Tritanopia

189.1230, -3.0186, 34.9721

Trichromacy



Original Color

187.6100, -15.0907, 33.6680

Protanomaly

186.1950, -12.4211, 17.3690

Deuteranomaly

186.8650, -15.2164, 27.3054

Tritanomaly

188.3850, -7.0918, 34.7424

Monochromacy



Original Color

187.6100, -15.0907, 33.6680

Achromatopsia

188.0000, 0.0000, 0.0000

Achromatomaly

187.9970, -5.4215, 12.2806

CSS Examples

Text

The CSS property to change the color of the text to YUV 187.6100, -15.0907, 33.6680 is called "color". The color property can be set on classes, ids or directly on the HTML element.

This example shows how text in the color `rgb(226, 174, 157)` looks like.

```
.text, #text, p{  
    color:rgb(226, 174, 157)  
}
```

If you want to add a text shadow in that color use the text-shadow property, you can generate a text shadow directly with our [CSS Text Shadow Generator](#).

Here you see how black text with a 4 pixel rgb(226, 174, 157) colored shadow looks like.

```
.shadow{ text-shadow: 4px 4px 2px rgb(226, 174, 157) }
```

Border

The CSS property to change the border of an element to YUV 187.6100, -15.0907, 33.6680 is called "border".

The border property can be set on classes, ids or directly on the HTML element.

This example shows the color as border, it can be applied via the CSS property "border" or "border-color".

```
.border, #border, table{ border:4px solid rgb(226, 174, 157) }
```


If only the border color should be changed use the property `border-color`.

```
.border{ border-color:rgb(226, 174, 157) }
```

If you want to add a box shadow in that color use:

Here you see how a box with a 4 pixel `rgb(226, 174, 157)` colored shadow looks like.

```
.boxshadow{ -moz-box-shadow:4px 4px 4px  
4px rgb(226, 174, 157); -webkit-box-  
shadow:4px 4px 4px 4px rgb(226, 174, 157);  
box-shadow:4px 4px 4px 4px rgb(226, 174,  
157) }
```

Background

The CSS property to change the background color of an element to YUV 187.6100, -15.0907, 33.6680 is called "background". The background property can be set on classes, ids or directly on the HTML element.

```
.background, #background, body{  
background: rgb(226, 174, 157) }
```

If only the background color should be changed can be used:

```
.background{ background-color: rgb(226,  
174, 157) }
```

This example shows the color as background, it is applied via the CSS property "background".

To optimize and compress your CSS code, you can use our [online CSS compressor and optimizer](#) based on csstidy. If you want to create a linear or radial gradient as background or border, check our [CSS Gradient Generator](#).

Hey! You found this booklet interesting? Support Converting Colors with the new Membership Option!

The pro membership hides all ads, plus gives you double the colors in the color bucket, and more awesome pro features!

[Learn more, Memberships starting at \\$2.50/m!](#)

**Follow me
on Twitter!**

@ConvertingColor