

Converting Colors

YUV(188.1320, -16.8271,
30.5792)

Have a look what the booklet for
YUV(188.1320, -16.8271, 30.5792)
contains.

YUV(188.1320, -16.8271, 30.5792)	3
<i>Conversions</i>	4
<i>Details</i>	6
<i>Harmonies</i>	12
<i>Previews</i>	24
<i>Color Blindness Simulation</i>	28
<i>CSS Examples</i>	31

Color

**YUV(188.1320, -16.8271,
30.5792)**

Conversions

Conversions Part 1

Format	Color
Hex	DFB19A
RGB	223, 177, 154
RGB Percent	87%, 69%, 60%
CMY	0.1255, 0.3059, 0.3961
CMYK	0.00, 0.21, 0.31, 0.13
HSL	20°, 52%, 74%
HSV	20°, 31%, 87%
XYZ	51.9863, 49.4654, 37.3796
YIQ	188.1320, 34.7990, 2.5990

Conversions

Conversions Part 2

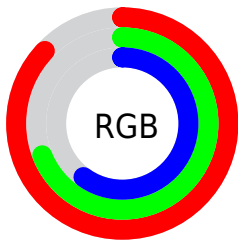
Format	Color
R _Y B	223, 189, 154
Decimal	14659994
CIE Lab	75.74, 13.47, 18.13
CIE LCh	76, 22.589, 53.386
Yxy	49.4654, 0.3745, 0.3563
Android (android.graphics.Color)	4292850074 (0xFFDFB19A)
YUV	188.1320, -16.8271, 30.5792
Hunter-Lab	70.3316, 8.8597, 17.7208

Details

The YUV color **188.1320, -16.8271, 30.5792** is a light color, and the websafe version is hex **CC9999**. A complement of this color would be **188.8680, 16.8271, -30.5792**, and the grayscale version is **188.0000, 0.0000, 0.0000**.

A 20% lighter version of the original color is **236.7280, -14.1629, 16.0245**, and **134.4630, -15.5113, 28.5349** is the 20% darker color. If you saturate the color by 10%, you get **176.8190, -22.0958, 40.5007**, and if you desaturate by 10%, it is **199.4450, -11.5584, 20.6577**.

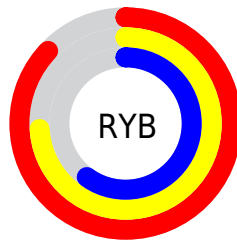
Distribution



Red (87%)

Green (69%)

Blue (60%)



Red (87%)

Yellow (74%)

Blue (60%)

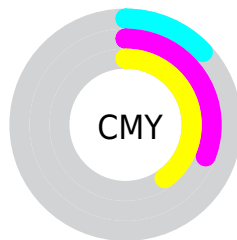


Cyan (0%)

Magenta (21%)

Yellow (31%)

Black (13%)



Cyan (13%)

Magenta (31%)

Yellow (40%)

Brightness & Saturation Gradients

These gradients show how the YUV color 188.1320, -16.8271, 30.5792 changes by changing the brightness by 10 percent. The first figure shows a shift by +10% for each color and the second figure -10%.

Similar to the brightness gradients but the following saturation gradients show a change of the YUV color 188.1320, -16.8271, 30.5792 by changing the saturation by 10% instead.

■ 188.1320,
-16.8271, 30.5792

■ 188.1320,
-16.8271, 30.5792

255.0000, 0.0000,
0.0000

■ 160.6480,
-16.0955, 29.2497

■ 236.7280,
-14.1629, 16.0245

■ 134.4630,
-15.5113, 28.5349

■ 252.9480, -7.8624,
1.7996

■ 108.6800,
-14.6322, 26.5906

■ 84.1960, -13.9006,
25.2611

■ 61.0000, -13.3110,
22.8020

■ 38.5160, -12.5794,
21.4725

■ 16.9440, -8.3534,

19.3431

■ 0.0000, 0.0000,
0.0000

■ 188.1320,
-16.8271, 30.5792

■ 188.1320,
-16.8271, 30.5792

■ 176.8190,
-22.0958, 40.5007

■ 199.4450,
-11.5584, 20.6577

■ 165.3920,
-27.8013, 50.5222

■ 210.8720, -5.8529,
10.6363

■ 154.0790,
-33.0699, 60.4437

■ 222.1850, -0.5842,
0.7148

■ 143.3530,
-38.6280, 69.8504

■ 232.9110, 4.9739,
-8.6919

■ 132.0400,
-43.8967, 79.7719

■ 243.0840, 5.8746,
-17.6137

■ 120.6130,
-49.6022, 89.7934

■ 245.4320, 4.7170,
-19.6729

■ 110.1150,
-54.2867, 99.0001

Harmonies

Analogous

The Analogous color harmony consists of three colors that are next to each other on the color wheel.



189.8150, -9.2758, 35.2422



188.1320, -16.8271, 30.5792



186.5450, -19.9887, 17.9390

Triad

The Triadic color harmony groups three colors that are evenly spaced from another and form a triangle on the color wheel.



188.1320, -16.8271, 30.5792



178.7200, 1.1240, -33.9574



188.0870, 18.1981, -3.5843

Complementary

The Complementary color scheme is a pair of colors which are on the opposite of each other on the color wheel.



188.1320, -16.8271, 30.5792



188.8680, 16.8271, -30.5792

Split Complementary

Split-complementary colors differ from the complementary color scheme. The scheme consists of three colors, the original color and two neighbors of the complement color.



184.1660, 21.6102, -24.7016



188.1320, -16.8271, 30.5792



177.8250, 11.9183, -42.8195

Square

The Square scheme is like the rectangle color scheme, but the four colors are evenly spaced on the color wheel.



188.1320, -16.8271, 30.5792



181.5450, -10.1287, -18.0180



179.7960, 19.3276, -39.2861



189.9710, 10.8603, 16.6884

Rectangle

The Rectangle color scheme consists of four colors that form a rectangle on the color wheel.



188.1320, -16.8271, 30.5792



184.7070, -19.0826, 7.2730



179.7960, 19.3276, -39.2861



186.7980, 19.8196, -10.3468

Sweetspot

The Sweet Spot groups the original color and five complimentary colors.



188.1320, -16.8271, 30.5792



243.5730, -5.7055, 10.0215



179.8750, 9.9216, 37.8206



120.4200, -3.6581, 6.6477



0.0000, 0.0000, 0.0000



128.0000, 0.0000, 0.0000

Same Dimension

The Same Dimension uses a secret algorithm to generate beautiful new colors.



188.1320, -16.8271, 30.5792



207.3030, -22.8274, 41.8303



208.0900, -26.6664, 13.0761



106.6370, -2.7790, 4.7034



87.2570, -43.0177, 77.8276



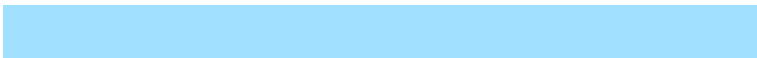
23.7440, -11.7058, 21.2725

Inverse Universe

The Inverse Universe completely reimagines the original color for something new.



188.8680, 16.8271, -30.5792



208.6970, 22.8274, -41.8303



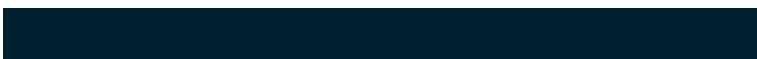
168.9100, 26.6664, -13.0761



106.3630, 2.7790, -4.7034



88.7430, 43.0177, -77.8276



24.2560, 11.7058, -21.2725

Previews

White Background



This preview shows how the YUV color 188.1320, -16.8271, 30.5792 looks on a white background.

Color Contrast Check

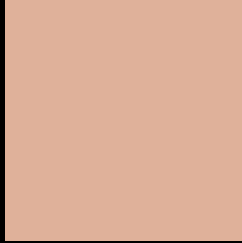
Large Text (above 18pt) WCAG AA × Fail

Any Text WCAG AA × Fail

Large Text (above 18pt) WCAG AAA × Fail

Any Text WCAG AAA × Fail

Black Background



This preview shows how the YUV color 188.1320, -16.8271, 30.5792 looks on a black background.

Color Contrast Check

Large Text (above 18pt) WCAG AA ✓ Pass

Any Text WCAG AA ✓ Pass

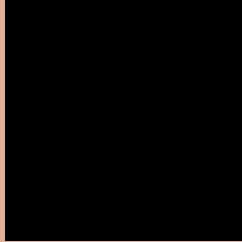
Large Text (above 18pt) WCAG AAA ✓ Pass

Any Text WCAG AAA ✓ Pass

If you want to check with other color combinations, try the [Color Contrast Checker](#).

YUV 188.1320, -16.8271, 30.5792

Background



This preview shows how black text looks on a background with the YUV color 188.1320, -16.8271, 30.5792.



This preview shows how white text looks on a background with the YUV color 188.1320, -16.8271,

30.5792.

Color Blindness Simulation

Color vision deficiency is a very complex topic, and I could not describe the different causes any better than Wikipedia does, so if you want to learn more, you should check out their [article about color blindness](#).

Dichromacy



Original Color

188.1320, -16.8271, 30.5792

Protanopia

186.2110, -13.4150, 9.4620

Deuteranopia

187.9850, -17.2476, 25.4462



Tritanopia

189.7420, -1.8448, 31.7983

Trichromacy



Original Color

188.1320, -16.8271, 30.5792

Protanomaly

186.9130, -14.7471, 16.7393

Deuteranomaly

187.9960, -17.2530, 27.1905

Tritanomaly

189.2490, -7.5178, 31.3536

Monochromacy



Original Color

188.1320, -16.8271, 30.5792

Achromatopsia

188.0000, 0.0000, 0.0000

Achromatomaly

188.1710, -6.0003, 11.2510

CSS Examples

Text

The CSS property to change the color of the text to YUV 188.1320, -16.8271, 30.5792 is called "color". The color property can be set on classes, ids or directly on the HTML element.

This example shows how text in the color `rgb(223, 177, 154)` looks like.

```
.text, #text, p{  
    color:rgb(223, 177, 154)  
}
```

If you want to add a text shadow in that color use the text-shadow property, you can generate a text shadow directly with our [CSS Text Shadow Generator](#).

Here you see how black text with a 4 pixel rgb(223, 177, 154) colored shadow looks like.

```
.shadow{ text-shadow: 4px 4px 2px rgb(223, 177, 154) }
```

Border

The CSS property to change the border of an element to YUV 188.1320, -16.8271, 30.5792 is called "border".

The border property can be set on classes, ids or directly on the HTML element.

This example shows the color as border, it can be applied via the CSS property "border" or "border-color".

```
.border, #border, table{ border:4px solid rgb(223, 177, 154) }
```


If only the border color should be changed use the property `border-color`.

```
.border{ border-color:rgb(223, 177, 154) }
```

If you want to add a box shadow in that color use:

Here you see how a box with a 4 pixel `rgb(223, 177, 154)` colored shadow looks like.

```
.boxshadow{ -moz-box-shadow:4px 4px 4px  
4px rgb(223, 177, 154); -webkit-box-  
shadow:4px 4px 4px 4px rgb(223, 177, 154);  
box-shadow:4px 4px 4px 4px rgb(223, 177,  
154) }
```

Background

The CSS property to change the background color of an element to YUV 188.1320, -16.8271, 30.5792 is called "background". The background property can be set on classes, ids or directly on the HTML element.

```
.background, #background, body{  
background: rgb(223, 177, 154) }
```

If only the background color should be changed can be used:

```
.background{ background-color: rgb(223,  
177, 154) }
```

This example shows the color as background, it is applied via the CSS property "background".

To optimize and compress your CSS code, you can use our [online CSS compressor and optimizer](#) based on csstidy. If you want to create a linear or radial gradient as background or border, check our [CSS Gradient Generator](#).

Hey! You found this booklet interesting? Support Converting Colors with the new Membership Option!

The pro membership hides all ads, plus gives you double the colors in the color bucket, and more awesome pro features!

[Learn more, Memberships starting at \\$2.50/m!](#)

**Follow me
on Twitter!**

@ConvertingColor