

Converting Colors

YUV(188.4580, -17.9738,
25.0313)

Have a look what the booklet for
YUV(188.4580, -17.9738, 25.0313)
contains.

YUV(188.4580, -17.9738, 25.0313)	3
<i>Conversions</i>	4
<i>Details</i>	6
<i>Harmonies</i>	12
<i>Previews</i>	24
<i>Color Blindness Simulation</i>	28
<i>CSS Examples</i>	31

Color

**YUV(188.4580, -17.9738,
25.0313)**

Conversions

Conversions Part 1

Format	Color
Hex	D9B598
RGB	217, 181, 152
RGB Percent	85%, 71%, 60%
CMY	0.1490, 0.2902, 0.4039
CMYK	0.00, 0.17, 0.30, 0.15
HSL	27°, 46%, 72%
HSV	27°, 30%, 85%
XYZ	50.8066, 50.0665, 36.6918
YIQ	188.4580, 30.7650, -1.3870

Conversions

Conversions Part 2

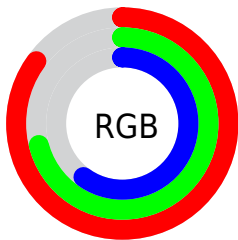
Format	Color
R_{YB}	217, 204, 152
Decimal	14267800
CIE _{Lab}	76.11, 8.76, 19.63
CIE _{LCh}	76, 21.500, 65.954
Yxy	50.0665, 0.3693, 0.3639
Android (android.graphics.Color)	4292457880 (0xFFD9B598)
YUV	188.4580, -17.9738, 25.0313
Hunter-Lab	70.7577, 4.3438, 18.7852

Details

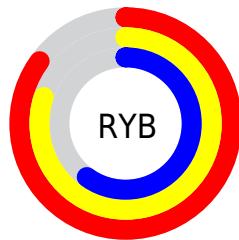
The YUV color $188.4580, -17.9738, 25.0313$ is a light color, and the websafe version is hex FFCC99 . A complement of this color would be $180.5420, 17.9738, -25.0313$, and the grayscale version is $189.0000, 0.0000, 0.0000$.

A 20% lighter version of the original color is $238.8480, -16.1941, 14.1653$, and $134.7890, -16.6580, 22.9870$ is the 20% darker color. If you saturate the color by 10%, you get $178.9060, -24.1107, 33.4084$, and if you desaturate by 10%, it is $198.0100, -11.8369, 16.6542$.

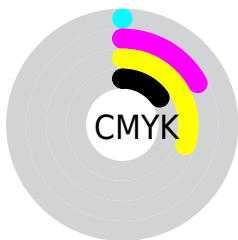
Distribution



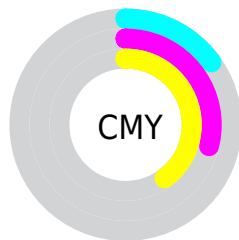
- Red (85%)
- Green (71%)
- Blue (60%)



- Red (85%)
- Yellow (80%)
- Blue (60%)



- Cyan (0%)
- Magenta (17%)
- Yellow (30%)
- Black (15%)



- Cyan (15%)
- Magenta (29%)
- Yellow (40%)

Brightness & Saturation Gradients

These gradients show how the YUV color 188.4580, -17.9738, 25.0313 changes by changing the brightness by 10 percent. The first figure shows a shift by +10% for each color and the second figure -10%.

Similar to the brightness gradients but the following saturation gradients show a change of the YUV color 188.4580, -17.9738, 25.0313 by changing the saturation by 10% instead.

■ 188.4580,
-17.9738, 25.0313

■ 188.4580,
-17.9738, 25.0313

255.0000, 0.0000,
0.0000

■ 161.2730,
-17.3896, 24.3166

■ 238.8480,
-16.1941, 14.1653

■ 134.7890,
-16.6580, 22.9870

■ 252.7200, -8.7360,
1.9996

■ 109.3050,
-15.9264, 21.6575

■ 84.8210, -15.1948,
20.3280

■ 61.3370, -14.4631,
18.9985

■ 39.3260, -14.4577,
17.2541

■ 18.9820, -9.3581,

14.9248

■ 0.0000, 0.0000,
0.0000

■ 188.4580,
-17.9738, 25.0313

■ 188.4580,
-17.9738, 25.0313

■ 178.9060,
-24.1107, 33.4084

■ 198.0100,
-11.8369, 16.6542

■ 169.4680,
-29.8107, 41.6856

■ 207.4480, -6.1369,
8.3771

■ 159.9160,
-35.9476, 50.0627

■ 217.0000, 0.0000,
0.0000

■ 150.3640,
-42.0845, 58.4398

■ 226.5520, 6.1369,
-8.3771

■ 140.8120,
-48.2213, 66.8169

■ 235.4200, 9.6529,
-16.1543

■ 131.3740,
-53.9214, 75.0940

■ 242.4640, 6.1802,
-22.3319

■ 121.8220,
-60.0582, 83.4711

■ 243.6380, 5.6015,
-23.3615

Harmonies

Analogous

The Analogous color harmony consists of three colors that are next to each other on the color wheel.



190.2940, -12.4699, 33.0682



188.4580, -17.9738, 25.0313



186.7290, -19.0934, 10.7617

Triad

The Triadic color harmony groups three colors that are evenly spaced from another and form a triangle on the color wheel.



188.4580, -17.9738, 25.0313



179.8490, 5.4974, -36.7016



189.9310, 14.8240, 5.3225

Complementary

The Complementary color scheme is a pair of colors which are on the opposite of each other on the color wheel.



188.4580, -17.9738, 25.0313



180.5420, 17.9738, -25.0313

Split Complementary

Split-complementary colors differ from the complementary color scheme. The scheme consists of three colors, the original color and two neighbors of the complement color.



187.0640, 19.6884, -14.9651



188.4580, -17.9738, 25.0313



180.2320, 14.6756, -40.5455

Square

The Square scheme is like the rectangle color scheme, but the four colors are evenly spaced on the color wheel.



188.4580, -17.9738, 25.0313



182.0650, -5.4550, -23.7360



182.9540, 19.7427, -32.4087



191.4510, 6.1867, 22.4065

Rectangle

The Rectangle color scheme consists of four colors that form a rectangle on the color wheel.



188.4580, -17.9738, 25.0313



185.0480, -16.2927, -0.9191



182.9540, 19.7427, -32.4087



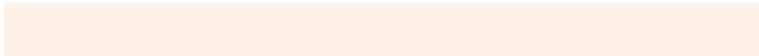
189.6420, 16.4455, -1.4400

Sweetspot

The Sweet Spot groups the original color and five complimentary colors.



188.4580, -17.9738, 25.0313



244.7470, -6.2843, 8.9919



175.6530, 6.5801, 36.2613



121.5940, -4.2368, 5.6181



0.0000, 0.0000, 0.0000



128.0000, 0.0000, 0.0000

Same Dimension

The Same Dimension uses a secret algorithm to generate beautiful new colors.



188.4580, -17.9738, 25.0313



214.5750, -25.4265, 35.4527



207.2420, -27.2343, 8.5578



105.2240, -3.0684, 4.1886



96.9260, -47.7845, 66.7169



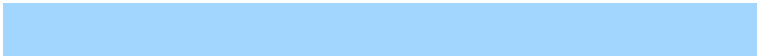
25.4940, -12.5685, 17.9838

Inverse Universe

The Inverse Universe completely reimagines the original color for something new.



180.5420, 17.9738, -25.0313



203.4250, 25.4265, -35.4527



161.7580, 27.2343, -8.5578



103.7760, 3.0684, -4.1886



76.0740, 47.7845, -66.7169



19.9190, 12.8579, -17.4690

Previews

White Background



This preview shows how the YUV color 188.4580, -17.9738, 25.0313 looks on a white background.

Color Contrast Check

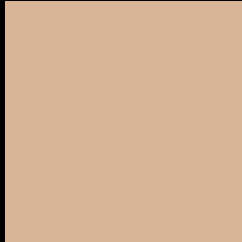
Large Text (above 18pt) WCAG AA × Fail

Any Text WCAG AA × Fail

Large Text (above 18pt) WCAG AAA × Fail

Any Text WCAG AAA × Fail

Black Background



This preview shows how the YUV color 188.4580, -17.9738, 25.0313 looks on a black background.

Color Contrast Check

Large Text (above 18pt) WCAG AA ✓ Pass

Any Text WCAG AA ✓ Pass

Large Text (above 18pt) WCAG AAA ✓ Pass

Any Text WCAG AAA ✓ Pass

If you want to check with other color combinations, try the [Color Contrast Checker](#).

YUV 188.4580, -17.9738, 25.0313

Background



This preview shows how black text looks on a background with the YUV color 188.4580, -17.9738, 25.0313.



This preview shows how white text looks on a background with the YUV color 188.4580, -17.9738, 25.0313.

Color Blindness Simulation

Color vision deficiency is a very complex topic, and I could not describe the different causes any better than Wikipedia does, so if you want to learn more, you should check out their [article about color blindness](#).

Dichromacy



Original Color

188.4580, -17.9738, 25.0313

Protanopia

186.9400, -15.7464, 10.5766

Deuteranopia

188.1700, -17.8318, 26.1609



Tritanopia

190.9370, -0.9549, 26.3653

Trichromacy



Original Color

188.4580, -17.9738, 25.0313

Protanomaly

187.7450, -16.6363, 16.0096

Deuteranomaly

188.1700, -17.8318, 26.1609

Tritanomaly

190.3300, -7.0647, 26.0206

Monochromacy



Original Color

188.4580, -17.9738, 25.0313

Achromatopsia

188.0000, 0.0000, 0.0000

Achromatomaly

188.0460, -6.4317, 9.6067

CSS Examples

Text

The CSS property to change the color of the text to YUV 188.4580, -17.9738, 25.0313 is called "color". The color property can be set on classes, ids or directly on the HTML element.

This example shows how text in the color `rgb(217, 181, 152)` looks like.

```
.text, #text, p{  
    color:rgb(217, 181, 152)  
}
```

If you want to add a text shadow in that color use the text-shadow property, you can generate a text shadow directly with our [CSS Text Shadow Generator](#).

Here you see how black text with a 4 pixel rgb(217, 181, 152) colored shadow looks like.

```
.shadow{ text-shadow: 4px 4px 2px rgb(217, 181, 152) }
```

Border

The CSS property to change the border of an element to YUV 188.4580, -17.9738, 25.0313 is called "border".

The border property can be set on classes, ids or directly on the HTML element.

This example shows the color as border, it can be applied via the CSS property "border" or "border-color".

```
.border, #border, table{ border:4px solid rgb(217, 181, 152) }
```


If only the border color should be changed use the property `border-color`.

```
.border{ border-color:rgb(217, 181, 152) }
```

If you want to add a box shadow in that color use:

Here you see how a box with a 4 pixel `rgb(217, 181, 152)` colored shadow looks like.

```
.boxshadow{ -moz-box-shadow:4px 4px 4px  
4px rgb(217, 181, 152); -webkit-box-  
shadow:4px 4px 4px 4px rgb(217, 181, 152);  
box-shadow:4px 4px 4px 4px rgb(217, 181,  
152) }
```

Background

The CSS property to change the background color of an element to YUV 188.4580, -17.9738, 25.0313 is called "background". The background property can be set on classes, ids or directly on the HTML element.

```
.background, #background, body{  
background: rgb(217, 181, 152) }
```

If only the background color should be changed can be used:

```
.background{ background-color: rgb(217,  
181, 152) }
```

This example shows the color as background, it is applied via the CSS property "background".

To optimize and compress your CSS code, you can use our [online CSS compressor and optimizer](#) based on csstidy. If you want to create a linear or radial gradient as background or border, check our [CSS Gradient Generator](#).

Hey! You found this booklet interesting? Support Converting Colors with the new Membership Option!

The pro membership hides all ads, plus gives you double the colors in the color bucket, and more awesome pro features!

[Learn more, Memberships starting at \\$2.50/m!](#)

**Follow me
on Twitter!**

@ConvertingColor