

Converting Colors

YUV(188.4880, -10.1006,
19.7430)

Have a look what the booklet for
YUV(188.4880, -10.1006, 19.7430)
contains.

YUV(188.4880, -10.1006, 19.7430)	3
<i>Conversions</i>	4
<i>Details</i>	6
<i>Harmonies</i>	12
<i>Previews</i>	24
<i>Color Blindness Simulation</i>	28
<i>CSS Examples</i>	31

Color

**YUV(188.4880, -10.1006,
19.7430)**

Conversions

Conversions Part 1

Format	Color
Hex	D3B5A8
RGB	211, 181, 168
RGB Percent	83%, 71%, 66%
CMY	0.1725, 0.2902, 0.3412
CMYK	0.00, 0.14, 0.20, 0.17
HSL	18°, 33%, 74%
HSV	18°, 20%, 83%
XYZ	50.4557, 49.7238, 43.9841
YIQ	188.4880, 22.0530, 2.3170

Conversions

Conversions Part 2

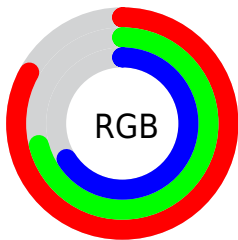
Format	Color
R _Y B	211, 187, 168
Decimal	13874600
CIE Lab	75.90, 8.73, 10.60
CIE LCh	76, 13.735, 50.524
Yxy	49.7238, 0.3500, 0.3449
Android (android.graphics.Color)	4292064680 (0xFFD3B5A8)
YUV	188.4880, -10.1006, 19.7430
Hunter-Lab	70.5151, 4.3208, 12.3781

Details

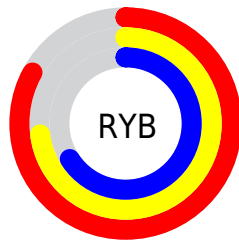
The YUV color **188.4880, -10.1006, 19.7430** is a light color, and the websafe version is hex **CC9999**. A complement of this color would be **190.5120, 10.1006, -19.7430**, and the grayscale version is **189.0000, 0.0000, 0.0000**.

A 20% lighter version of the original color is **240.7860, -8.7685, 12.4657**, and **135.0040, -9.3690, 18.4135** is the 20% darker color. If you saturate the color by 10%, you get **177.2890, -14.9325, 29.5645**, and if you desaturate by 10%, it is **199.6870, -5.2687, 9.9215**.

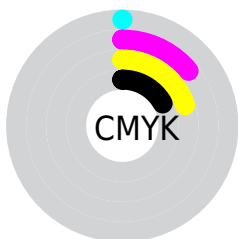
Distribution



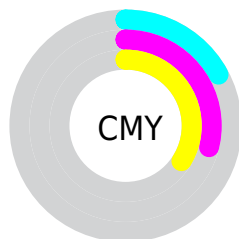
- Red (83%)
- Green (71%)
- Blue (66%)



- Red (83%)
- Yellow (73%)
- Blue (66%)



- Cyan (0%)
- Magenta (14%)
- Yellow (20%)
- Black (17%)



- Cyan (17%)
- Magenta (29%)
- Yellow (34%)

Brightness & Saturation Gradients

These gradients show how the YUV color 188.4880, -10.1006, 19.7430 changes by changing the brightness by 10 percent. The first figure shows a shift by +10% for each color and the second figure -10%.

Similar to the brightness gradients but the following saturation gradients show a change of the YUV color 188.4880, -10.1006, 19.7430 by changing the saturation by 10% instead.

■ 188.4880,
-10.1006, 19.7430

■ 188.4880,
-10.1006, 19.7430

255.0000, 0.0000,
0.0000

■ 161.3030, -9.5164,
19.0283

■ 240.7860, -8.7685,
12.4657

■ 135.0040, -9.3690,
18.4135

■ 254.6580, -1.3104,
0.2999

■ 109.7050, -9.2216,
17.7987

■ 85.2210, -8.4900,
16.4692

■ 61.7370, -7.7583,
15.1397

■ 40.1390, -7.4635,
13.9101

■ 18.0960, -8.9213,

14.8248

■ 0.0000, 0.0000,
0.0000

■ 188.4880,
-10.1006, 19.7430

■ 188.4880,
-10.1006, 19.7430

■ 177.2890,
-14.9325, 29.5645

■ 199.6870, -5.2687,
9.9215

■ 166.6770,
-20.0538, 38.8713

■ 210.2990, -0.1474,
0.6148

■ 155.4780,
-24.8857, 48.6928

■ 221.4980, 4.6845,
-9.2067

■ 144.2790,
-29.7175, 58.5143

■ 232.6970, 9.5164,
-19.0283

■ 133.0800,
-34.5494, 68.3358

■ 241.8440, 6.4859,
-27.0502

■ 122.3540,
-40.1075, 77.7425

■ 111.1550,
-44.9394, 87.5641

■ 100.6570,
-49.6239, 96.7708

Harmonies

Analogous

The Analogous color harmony consists of three colors that are next to each other on the color wheel.



189.4650, -5.1592, 21.5172



188.4880, -10.1006, 19.7430



187.1620, -12.4049, 12.1359

Triad

The Triadic color harmony groups three colors that are evenly spaced from another and form a triangle on the color wheel.



188.4880, -10.1006, 19.7430



182.7650, -0.3771, -19.0879



187.9640, 11.3567, -2.5994

Complementary

The Complementary color scheme is a pair of colors which are on the opposite of each other on the color wheel.



188.4880, -10.1006, 19.7430



190.5120, 10.1006, -19.7430

Split Complementary

Split-complementary colors differ from the complementary color scheme. The scheme consists of three colors, the original color and two neighbors of the complement color.



185.6420, 12.9945, -14.5950



188.4880, -10.1006, 19.7430



182.4530, 6.1857, -24.0763

Square

The Square scheme is like the rectangle color scheme, but the four colors are evenly spaced on the color wheel.



188.4880, -10.1006, 19.7430



183.9250, -6.3720, -9.5812



184.0170, 10.8376, -22.8169



189.1890, 6.8088, 9.4812

Rectangle

The Rectangle color scheme consists of four colors that form a rectangle on the color wheel.



188.4880, -10.1006, 19.7430



186.5310, -12.0938, 5.6733



184.0170, 10.8376, -22.8169



187.4580, 12.0992, -7.4177

Sweetspot

The Sweet Spot groups the original color and five complimentary colors.



188.4880, -10.1006, 19.7430



246.8330, -3.3687, 7.1625



184.2770, 6.7654, 23.4361



122.8650, -1.9054, 4.5034



0.0000, 0.0000, 0.0000



128.0000, 0.0000, 0.0000

Same Dimension

The Same Dimension uses a secret algorithm to generate beautiful new colors.



188.4880, -10.1006, 19.7430



222.8050, -14.2009, 28.2350



200.8150, -16.1778, 8.9322



99.0500, -2.4897, 5.2181



80.1690, -39.5233, 77.0278



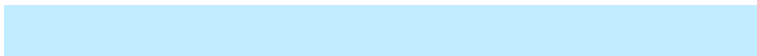
19.3030, -9.5164, 19.0283

Inverse Universe

The Inverse Universe completely reimagines the original color for something new.



190.5120, 10.1006, -19.7430



225.6080, 14.4903, -27.7202



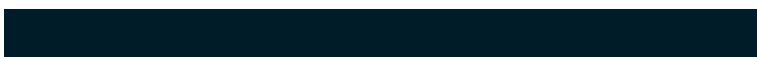
178.1850, 16.1778, -8.9322



99.3630, 2.7790, -4.7034



87.8310, 39.5233, -77.0278



21.1100, 9.8058, -18.5135

Previews

White Background



This preview shows how the YUV color 188.4880, -10.1006, 19.7430 looks on a white background.

Color Contrast Check

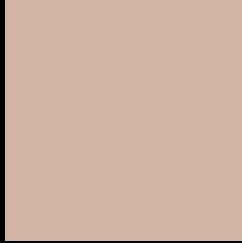
Large Text (above 18pt) WCAG AA × Fail

Any Text WCAG AA × Fail

Large Text (above 18pt) WCAG AAA × Fail

Any Text WCAG AAA × Fail

Black Background



This preview shows how the YUV color 188.4880, -10.1006, 19.7430 looks on a black background.

Color Contrast Check

Large Text (above 18pt) WCAG AA ✓ Pass

Any Text WCAG AA ✓ Pass

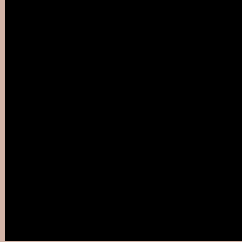
Large Text (above 18pt) WCAG AAA ✓ Pass

Any Text WCAG AAA ✓ Pass

If you want to check with other color combinations, try the [Color Contrast Checker](#).

YUV 188.4880, -10.1006, 19.7430

Background



This preview shows how black text looks on a background with the YUV color 188.4880, -10.1006, 19.7430.



This preview shows how white text looks on a background with the YUV color 188.4880, -10.1006, 19.7430.

Color Blindness Simulation

Color vision deficiency is a very complex topic, and I could not describe the different causes any better than Wikipedia does, so if you want to learn more, you should check out their [article about color blindness](#).

Dichromacy



Original Color

188.4880, -10.1006, 19.7430

Protanopia

187.2690, -8.0206, 5.9031

Deuteranopia

188.2000, -9.9586, 20.8726



Tritanopia

190.2460, 0.3717, 20.8323

Trichromacy



Original Color

188.4880, -10.1006, 19.7430

Protanomaly

187.7750, -8.7631, 10.7213

Deuteranomaly

188.2000, -9.9586, 20.8726

Tritanomaly

189.6220, -3.2646, 20.5025

Monochromacy



Original Color

188.4880, -10.1006, 19.7430

Achromatopsia

188.0000, 0.0000, 0.0000

Achromatomaly

187.8330, -3.3687, 7.1625

CSS Examples

Text

The CSS property to change the color of the text to YUV 188.4880, -10.1006, 19.7430 is called "color". The color property can be set on classes, ids or directly on the HTML element.

This example shows how text in the color `rgb(211, 181, 168)` looks like.

```
.text, #text, p{  
    color:rgb(211, 181, 168)  
}
```

If you want to add a text shadow in that color use the text-shadow property, you can generate a text shadow directly with our [CSS Text Shadow Generator](#).

Here you see how black text with a 4 pixel rgb(211, 181, 168) colored shadow looks like.

```
.shadow{ text-shadow: 4px 4px 2px rgb(211, 181, 168) }
```

Border

The CSS property to change the border of an element to YUV 188.4880, -10.1006, 19.7430 is called "border".

The border property can be set on classes, ids or directly on the HTML element.

This example shows the color as border, it can be applied via the CSS property "border" or "border-color".

```
.border, #border, table{ border:4px solid rgb(211, 181, 168) }
```


If only the border color should be changed use the property `border-color`.

```
.border{ border-color:rgb(211, 181, 168) }
```

If you want to add a box shadow in that color use:

Here you see how a box with a 4 pixel `rgb(211, 181, 168)` colored shadow looks like.

```
.boxshadow{ -moz-box-shadow:4px 4px 4px  
4px rgb(211, 181, 168); -webkit-box-  
shadow:4px 4px 4px 4px rgb(211, 181, 168);  
box-shadow:4px 4px 4px 4px rgb(211, 181,  
168) }
```

Background

The CSS property to change the background color of an element to YUV 188.4880, -10.1006, 19.7430 is called "background". The background property can be set on classes, ids or directly on the HTML element.

```
.background, #background, body{  
background: rgb(211, 181, 168) }
```

If only the background color should be changed can be used:

```
.background{ background-color: rgb(211,  
181, 168) }
```

This example shows the color as background, it is applied via the CSS property "background".

To optimize and compress your CSS code, you can use our [online CSS compressor and optimizer](#) based on csstidy. If you want to create a linear or radial gradient as background or border, check our [CSS Gradient Generator](#).

Hey! You found this booklet interesting? Support Converting Colors with the new Membership Option!

The pro membership hides all ads, plus gives you double the colors in the color bucket, and more awesome pro features!

[Learn more, Memberships starting at \\$2.50/m!](#)

**Follow me
on Twitter!**

@ConvertingColor