

Converting Colors

YUV(188.5270, -12.5848,
23.2168)

Have a look what the booklet for
YUV(188.5270, -12.5848, 23.2168)
contains.

YUV(188.5270, -12.5848, 23.2168)	3
<i>Conversions</i>	4
<i>Details</i>	6
<i>Harmonies</i>	12
<i>Previews</i>	24
<i>Color Blindness Simulation</i>	28
<i>CSS Examples</i>	31

Color

**YUV(188.5270, -12.5848,
23.2168)**

Conversions

Conversions Part 1

Format	Color
Hex	D7B4A3
RGB	215, 180, 163
RGB Percent	84%, 71%, 64%
CMY	0.1569, 0.2941, 0.3608
CMYK	0.00, 0.16, 0.24, 0.16
HSL	20°, 39%, 74%
HSV	20°, 24%, 84%
XYZ	50.9564, 49.7339, 41.5642
YIQ	188.5270, 26.3170, 2.1330

Conversions

Conversions Part 2

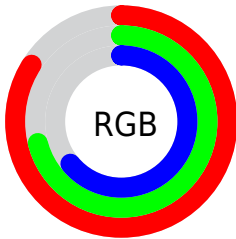
Format	Color
R_{YB}	215, 188, 163
Decimal	14136483
CIE _{Lab}	75.91, 10.04, 13.38
CIE _{LCh}	76, 16.724, 53.107
Yxy	49.7339, 0.3582, 0.3496
Android (android.graphics.Color)	4292326563 (0xFFD7B4A3)
YUV	188.5270, -12.5848, 23.2168
Hunter-Lab	70.5223, 5.5626, 14.4214

Details

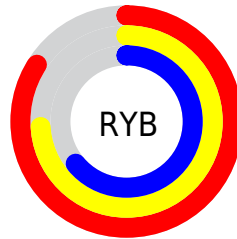
The YUV color $188.5270, -12.5848, 23.2168$ is a light color, and the websafe version is hex $CC9999$. A complement of this color would be $189.4730, 12.5848, -23.2168$, and the grayscale version is $189.0000, 0.0000, 0.0000$.

A 20% lighter version of the original color is $239.6290, -10.6631, 13.4804$, and $135.0430, -11.8532, 21.8873$ is the 20% darker color. If you saturate the color by 10%, you get $177.9150, -17.7061, 32.5235$, and if you desaturate by 10%, it is $199.2530, -7.0267, 13.8101$.

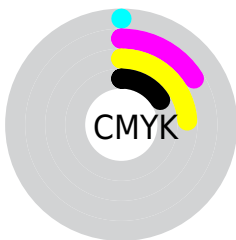
Distribution



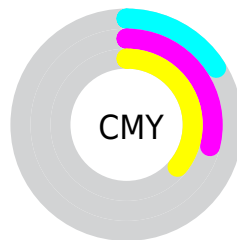
- Red (84%)
- Green (71%)
- Blue (64%)



- Red (84%)
- Yellow (74%)
- Blue (64%)



- Cyan (0%)
- Magenta (16%)
- Yellow (24%)
- Black (16%)



- Cyan (16%)
- Magenta (29%)
- Yellow (36%)

Brightness & Saturation Gradients

These gradients show how the YUV color 188.5270, -12.5848, 23.2168 changes by changing the brightness by 10 percent. The first figure shows a shift by +10% for each color and the second figure -10%.

Similar to the brightness gradients but the following saturation gradients show a change of the YUV color 188.5270, -12.5848, 23.2168 by changing the saturation by 10% instead.

■ 188.5270,
-12.5848, 23.2168

■ 188.5270,
-12.5848, 23.2168

255.0000, 0.0000,
0.0000

■ 161.3420,
-12.0006, 22.5021

■ 239.6290,
-10.6631, 13.4804

■ 135.0430,
-11.8532, 21.8873

■ 253.9740, -3.9312,
0.8998

■ 109.5590,
-11.1216, 20.5578

■ 85.0750, -10.3900,
19.2282

■ 61.5910, -9.6584,
17.8987

■ 39.6940, -9.2161,
16.0544

■ 18.3950, -9.0687,

15.4396

■ 0.0000, 0.0000,
0.0000

■ 188.5270,
-12.5848, 23.2168

■ 188.5270,
-12.5848, 23.2168

■ 177.9150,
-17.7061, 32.5235

■ 199.2530, -7.0267,
13.8101

■ 166.6020,
-22.9748, 42.4450

■ 210.4520, -2.1948,
3.9886

■ 155.9900,
-28.0961, 51.7518

■ 221.0640, 2.9264,
-5.3181

■ 144.6770,
-33.3648, 61.6733

■ 232.3770, 8.1951,
-15.2396

■ 133.9510,
-38.9228, 71.0800

■ 241.2790, 6.7645,
-23.0467

■ 122.7520,
-43.7547, 80.9015

■ 243.0400, 5.8963,
-24.5911

■ 112.0260,
-49.3128, 90.3082

■ 105.3750,
-51.9499, 96.1411

Harmonies

Analogous

The Analogous color harmony consists of three colors that are next to each other on the color wheel.



189.7430, -6.7753, 26.5354



188.5270, -12.5848, 23.2168



187.1900, -14.8837, 13.8654

Triad

The Triadic color harmony groups three colors that are evenly spaced from another and form a triangle on the color wheel.



188.5270, -12.5848, 23.2168



181.9600, 0.5127, -24.5209



188.1320, 13.2459, -1.8698

Complementary

The Complementary color scheme is a pair of colors which are on the opposite of each other on the color wheel.



188.5270, -12.5848, 23.2168



189.4730, 12.5848, -23.2168

Split Complementary

Split-complementary colors differ from the complementary color scheme. The scheme consists of three colors, the original color and two neighbors of the complement color.



185.9020, 15.3313, -17.4541



188.5270, -12.5848, 23.2168



181.6910, 8.5333, -30.4240

Square

The Square scheme is like the rectangle color scheme, but the four colors are evenly spaced on the color wheel.



188.5270, -12.5848, 23.2168



183.5610, -7.6716, -12.7700



183.0810, 13.7641, -28.1350



190.1400, 7.8190, 12.1552

Rectangle

The Rectangle color scheme consists of four colors that form a rectangle on the color wheel.



188.5270, -12.5848, 23.2168



185.6620, -14.1304, 5.5584



183.0810, 13.7641, -28.1350



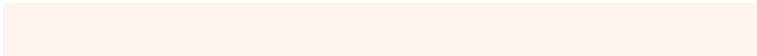
187.4410, 14.5726, -7.4028

Sweetspot

The Sweet Spot groups the original color and five complimentary colors.



188.5270, -12.5848, 23.2168



245.9040, -4.3897, 7.9772



182.6520, 8.0596, 28.3692



122.6370, -2.7790, 4.7034



0.0000, 0.0000, 0.0000



128.0000, 0.0000, 0.0000

Same Dimension

The Same Dimension uses a secret algorithm to generate beautiful new colors.



188.5270, -12.5848, 23.2168



217.2140, -17.8535, 33.1383



203.2020, -19.8196, 10.3468



101.6370, -2.7790, 4.7034



84.0010, -41.4125, 76.2981



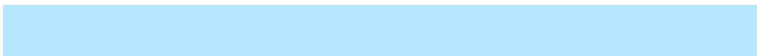
21.0750, -10.3900, 19.2282

Inverse Universe

The Inverse Universe completely reimagines the original color for something new.



189.4730, 12.5848, -23.2168



218.7860, 17.8535, -33.1383



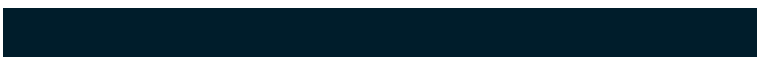
174.7980, 19.8196, -10.3468



101.9500, 2.4897, -5.2181



86.9990, 41.4125, -76.2981



21.9250, 10.3900, -19.2282

Previews

White Background



This preview shows how the YUV color 188.5270, -12.5848, 23.2168 looks on a white background.

Color Contrast Check

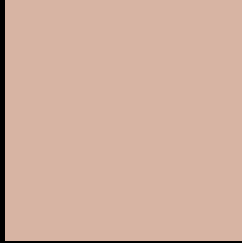
Large Text (above 18pt) WCAG AA × Fail

Any Text WCAG AA × Fail

Large Text (above 18pt) WCAG AAA × Fail

Any Text WCAG AAA × Fail

Black Background



This preview shows how the YUV color 188.5270, -12.5848, 23.2168 looks on a black background.

Color Contrast Check

Large Text (above 18pt) WCAG AA ✓ Pass

Any Text WCAG AA ✓ Pass

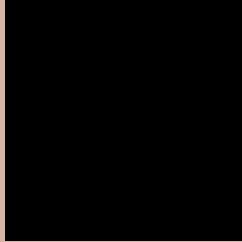
Large Text (above 18pt) WCAG AAA ✓ Pass

Any Text WCAG AAA ✓ Pass

If you want to check with other color combinations, try the [Color Contrast Checker](#).

YUV 188.5270, -12.5848, 23.2168

Background



This preview shows how black text looks on a background with the YUV color 188.5270, -12.5848, 23.2168.



This preview shows how white text looks on a background with the YUV color 188.5270, -12.5848, 23.2168.

Color Blindness Simulation

Color vision deficiency is a very complex topic, and I could not describe the different causes any better than Wikipedia does, so if you want to learn more, you should check out their [article about color blindness](#).

Dichromacy



Original Color

188.5270, -12.5848, 23.2168

Protanopia

186.9980, -10.3520, 7.0178

Deuteranopia

188.2280, -12.4374, 22.6020



Tritanopia

190.1540, -0.0759, 24.4209

Trichromacy



Original Color

188.5270, -12.5848, 23.2168

Protanomaly

187.2160, -10.9525, 12.9656

Deuteranomaly

188.2280, -12.4374, 22.6020

Tritanomaly

189.3020, -4.5859, 24.2911

Monochromacy



Original Color

188.5270, -12.5848, 23.2168

Achromatopsia

189.0000, 0.0000, 0.0000

Achromatomaly

188.9040, -4.3897, 7.9772

CSS Examples

Text

The CSS property to change the color of the text to YUV 188.5270, -12.5848, 23.2168 is called "color". The color property can be set on classes, ids or directly on the HTML element.

This example shows how text in the color `rgb(215, 180, 163)` looks like.

```
.text, #text, p{  
    color:rgb(215, 180, 163)  
}
```

If you want to add a text shadow in that color use the text-shadow property, you can generate a text shadow directly with our [CSS Text Shadow Generator](#).

Here you see how black text with a 4 pixel rgb(215, 180, 163) colored shadow looks like.

```
.shadow{ text-shadow: 4px 4px 2px rgb(215, 180, 163) }
```

Border

The CSS property to change the border of an element to YUV 188.5270, -12.5848, 23.2168 is called "border".

The border property can be set on classes, ids or directly on the HTML element.

This example shows the color as border, it can be applied via the CSS property "border" or "border-color".

```
.border, #border, table{ border:4px solid rgb(215, 180, 163) }
```


If only the border color should be changed use the property `border-color`.

```
.border{ border-color:rgb(215, 180, 163) }
```

If you want to add a box shadow in that color use:

Here you see how a box with a 4 pixel `rgb(215, 180, 163)` colored shadow looks like.

```
.boxshadow{ -moz-box-shadow:4px 4px 4px  
4px rgb(215, 180, 163); -webkit-box-  
shadow:4px 4px 4px 4px rgb(215, 180, 163);  
box-shadow:4px 4px 4px 4px rgb(215, 180,  
163) }
```

Background

The CSS property to change the background color of an element to YUV 188.5270, -12.5848, 23.2168 is called "background". The background property can be set on classes, ids or directly on the HTML element.

```
.background, #background, body{  
background: rgb(215, 180, 163) }
```

If only the background color should be changed can be used:

```
.background{ background-color: rgb(215,  
180, 163) }
```

This example shows the color as background, it is applied via the CSS property "background".

To optimize and compress your CSS code, you can use our [online CSS compressor and optimizer](#) based on csstidy. If you want to create a linear or radial gradient as background or border, check our [CSS Gradient Generator](#).

Hey! You found this booklet interesting? Support Converting Colors with the new Membership Option!

The pro membership hides all ads, plus gives you double the colors in the color bucket, and more awesome pro features!

[Learn more, Memberships starting at \\$2.50/m!](#)

**Follow me
on Twitter!**

@ConvertingColor