

Converting Colors

YUV(188.5780, -3.2430,
13.5251)

Have a look what the booklet for
YUV(188.5780, -3.2430, 13.5251)
contains.

YUV(188.5780, -3.2430, 13.5251)	3
<i>Conversions</i>	4
<i>Details</i>	6
<i>Harmonies</i>	12
<i>Previews</i>	24
<i>Color Blindness Simulation</i>	28
<i>CSS Examples</i>	31

Color

**YUV(188.5780, -3.2430,
13.5251)**

Conversions

Conversions Part 1

Format	Color
Hex	CCB6B6
RGB	204, 182, 182
RGB Percent	80%, 71%, 71%
CMY	0.2000, 0.2863, 0.2863
CMYK	0.00, 0.11, 0.11, 0.20
HSL	0°, 18%, 76%
HSV	0°, 11%, 80%
XYZ	50.0733, 49.6707, 51.2042
YIQ	188.5780, 13.1120, 4.6640

Conversions

Conversions Part 2

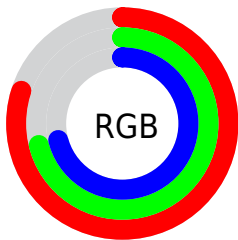
Format	Color
R _Y B	204, 182, 182
Decimal	13416118
CIE Lab	75.87, 7.85, 2.86
CIE LCh	76, 8.353, 20.035
Yxy	49.6707, 0.3317, 0.3291
Android (android.graphics.Color)	4291606198 (0xFFCCB6B6)
YUV	188.5780, -3.2430, 13.5251
Hunter-Lab	70.4774, 3.4864, 6.2580

Details

The YUV color $188.5780, -3.2430, 13.5251$ is a light color, and the websafe version is hex `CCCCCC`. A complement of this color would be $197.4220, 3.2430, -13.5251$, and the grayscale version is $189.0000, 0.0000, 0.0000$.

A 20% lighter version of the original color is $243.0830, -2.5059, 10.4512$, and $135.2790, -3.0955, 12.9103$ is the 20% darker color. If you saturate the color by 10%, you get $174.5580, -6.1911, 25.8206$, and if you desaturate by 10%, it is $202.5980, -0.2948, 1.2296$.

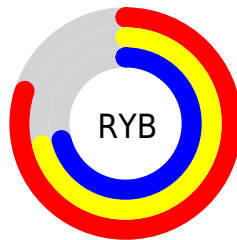
Distribution



Red (80%)

Green (71%)

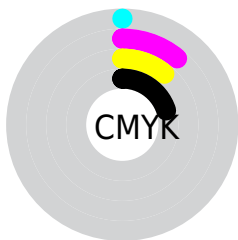
Blue (71%)



Red (80%)

Yellow (71%)

Blue (71%)

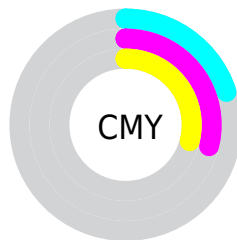


Cyan (0%)

Magenta (11%)

Yellow (11%)

Black (20%)



Cyan (20%)

Magenta (29%)

Yellow (29%)

Brightness & Saturation Gradients

These gradients show how the YUV color 188.5780, -3.2430, 13.5251 changes by changing the brightness by 10 percent. The first figure shows a shift by +10% for each color and the second figure -10%.

Similar to the brightness gradients but the following saturation gradients show a change of the YUV color 188.5780, -3.2430, 13.5251 by changing the saturation by 10% instead.

■ 188.5780, -3.2430,
13.5251

■ 188.5780, -3.2430,
13.5251

255.0000, 0.0000,
0.0000

■ 161.2790, -3.0955,
12.9103

■ 243.0830, -2.5059,
10.4512

■ 135.2790, -3.0955,
12.9103

■ 109.9800, -2.9481,
12.2955

■ 85.6810, -2.8007,
11.6808

■ 62.3820, -2.6533,
11.0660

■ 40.1970, -2.0691,
10.3512

■ 19.0830, -2.5059,

10.4512

■ 0.0000, 0.0000,
0.0000

■ 188.5780, -3.2430,
13.5251

■ 188.5780, -3.2430,
13.5251

■ 174.5580, -6.1911,
25.8206

■ 202.5980, -0.2948,
1.2296

■ 159.8370, -9.2866,
38.7310

■ 217.3190, 2.8007,
-11.6808

■ 145.8170,
-12.2348, 51.0265

■ 231.3390, 5.7489,
-23.9763

■ 131.0960,
-15.3303, 63.9368

■ 239.7510, 7.5178,
-31.3536

■ 117.0760,
-18.2785, 76.2323

■ 103.0560,
-21.2266, 88.5279

■ 88.3350, -24.3222,
101.4382

■ 74.3150, -27.2703,
113.7337

■ 60.9960, -30.0710,
125.4145

Harmonies

Analogous

The Analogous color harmony consists of three colors that are next to each other on the color wheel.



188.5930, 0.6937, 10.8809



188.5780, -3.2430, 13.5251



187.7690, -6.2951, 12.4806

Triad

The Triadic color harmony groups three colors that are evenly spaced from another and form a triangle on the color wheel.



188.5780, -3.2430, 13.5251



185.2290, -4.0569, -5.4628



186.0080, 7.8841, -8.7770

Complementary

The Complementary color scheme is a pair of colors which are on the opposite of each other on the color wheel.



188.5780, -3.2430, 13.5251



197.4220, 3.2430, -13.5251

Split Complementary

Split-complementary colors differ from the complementary color scheme. The scheme consists of three colors, the original color and two neighbors of the complement color.



184.9320, 6.4425, -13.0954



188.5780, -3.2430, 13.5251



185.1080, -0.5462, -11.4957

Square

The Square scheme is like the rectangle color scheme, but the four colors are evenly spaced on the color wheel.



188.5780, -3.2430, 13.5251



186.2900, -6.5520, 1.4997



184.8240, 3.5378, -14.7546



187.4110, 6.6994, -2.1144

Rectangle

The Rectangle color scheme consists of four colors that form a rectangle on the color wheel.



188.5780, -3.2430, 13.5251



187.8180, -7.3053, 9.8066



184.8240, 3.5378, -14.7546



185.8830, 7.4527, -10.4214

Sweetspot

The Sweet Spot groups the original color and five complimentary colors.



188.5780, -3.2430, 13.5251



249.3920, -1.1793, 4.9182



191.0860, 6.3666, 11.3256



123.7940, -0.8844, 3.6887



0.0000, 0.0000, 0.0000



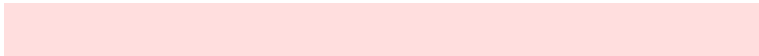
128.0000, 0.0000, 0.0000

Same Dimension

The Same Dimension uses a secret algorithm to generate beautiful new colors.



188.5780, -3.2430, 13.5251



231.8670, -4.8644, 20.2876



195.0350, -6.4263, 7.8623



94.9900, -1.4741, 6.1478



49.6340, -24.4696, 102.0530



11.3620, -5.6015, 23.3615

Inverse Universe

The Inverse Universe completely reimagines the original color for something new.



197.4220, 3.2430, -13.5251



245.1330, 4.8644, -20.2876



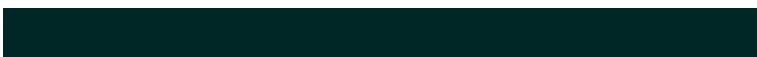
190.9650, 6.4263, -7.8623



99.0100, 1.4741, -6.1478



116.3660, 24.4696, -102.0530



26.6380, 5.6015, -23.3615

Previews

White Background



This preview shows how the YUV color 188.5780, -3.2430, 13.5251 looks on a white background.

Color Contrast Check

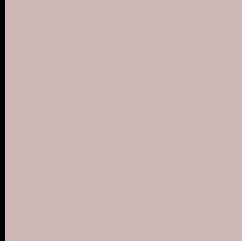
Large Text (above 18pt) WCAG AA × Fail

Any Text WCAG AA × Fail

Large Text (above 18pt) WCAG AAA × Fail

Any Text WCAG AAA × Fail

Black Background



This preview shows how the YUV color 188.5780, -3.2430, 13.5251 looks on a black background.

Color Contrast Check

Large Text (above 18pt) WCAG AA ✓ Pass

Any Text WCAG AA ✓ Pass

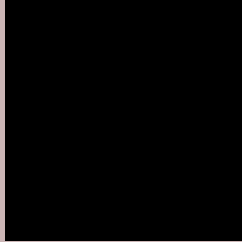
Large Text (above 18pt) WCAG AAA ✓ Pass

Any Text WCAG AAA ✓ Pass

If you want to check with other color combinations, try the [Color Contrast Checker](#).

YUV 188.5780, -3.2430, 13.5251

Background



This preview shows how black text looks on a background with the YUV color 188.5780, -3.2430, 13.5251.



This preview shows how white text looks on a background with the YUV color 188.5780, -3.2430,

Color Blindness Simulation

Color vision deficiency is a very complex topic, and I could not describe the different causes any better than Wikipedia does, so if you want to learn more, you should check out their [article about color blindness](#).

Dichromacy



Original Color

188.5780, -3.2430, 13.5251

Protanopia

187.2670, -1.6106, 3.2738

Deuteranopia

188.8880, -3.3958, 15.8842



Tritanopia

189.3700, 2.2826, 14.5845

Trichromacy



Original Color

188.5780, -3.2430, 13.5251

Protanomaly

188.0610, -2.4951, 6.9625

Deuteranomaly

188.5890, -3.2484, 15.2694

Tritanomaly

189.2020, 0.3934, 13.8548

Monochromacy



Original Color

188.5780, -3.2430, 13.5251

Achromatopsia

189.0000, 0.0000, 0.0000

Achromatomaly

188.3920, -1.1793, 4.9182

CSS Examples

Text

The CSS property to change the color of the text to YUV 188.5780, -3.2430, 13.5251 is called "color". The color property can be set on classes, ids or directly on the HTML element.

This example shows how text in the color `rgb(204, 182, 182)` looks like.

```
.text, #text, p{  
    color:rgb(204, 182, 182)  
}
```

If you want to add a text shadow in that color use the text-shadow property, you can generate a text shadow directly with our [CSS Text Shadow Generator](#).

Here you see how black text with a 4 pixel rgb(204, 182, 182) colored shadow looks like.

```
.shadow{ text-shadow: 4px 4px 2px rgb(204, 182, 182) }
```

Border

The CSS property to change the border of an element to YUV 188.5780, -3.2430, 13.5251 is called "border". The border property can be set on classes, ids or directly on the HTML element.

This example shows the color as border, it can be applied via the CSS property "border" or "border-color".

```
.border, #border, table{ border:4px solid rgb(204, 182, 182) }
```


If only the border color should be changed use the property `border-color`.

```
.border{ border-color:rgb(204, 182, 182) }
```

If you want to add a box shadow in that color use:

Here you see how a box with a 4 pixel `rgb(204, 182, 182)` colored shadow looks like.

```
.boxshadow{ -moz-box-shadow:4px 4px 4px  
4px rgb(204, 182, 182); -webkit-box-  
shadow:4px 4px 4px 4px rgb(204, 182, 182);  
box-shadow:4px 4px 4px 4px rgb(204, 182,  
182) }
```

Background

The CSS property to change the background color of an element to YUV 188.5780, -3.2430, 13.5251 is called "background". The background property can be set on classes, ids or directly on the HTML element.

```
.background, #background, body{  
background: rgb(204, 182, 182) }
```

If only the background color should be changed can be used:

```
.background{ background-color: rgb(204,  
182, 182) }
```

This example shows the color as background, it is applied via the CSS property "background".

To optimize and compress your CSS code, you can use our [online CSS compressor and optimizer](#) based on csstidy. If you want to create a linear or radial gradient as background or border, check our [CSS Gradient Generator](#).

Hey! You found this booklet interesting? Support Converting Colors with the new Membership Option!

The pro membership hides all ads, plus gives you double the colors in the color bucket, and more awesome pro features!

[Learn more, Memberships starting at \\$2.50/m!](#)

**Follow me
on Twitter!**

@ConvertingColor