

Converting Colors

YUV(188.6810, -19.5627,
21.3278)

Have a look what the booklet for
YUV(188.6810, -19.5627, 21.3278)
contains.

YUV(188.6810, -19.5627, 21.3278)	3
<i>Conversions</i>	4
<i>Details</i>	6
<i>Harmonies</i>	12
<i>Previews</i>	24
<i>Color Blindness Simulation</i>	28
<i>CSS Examples</i>	31

Color

**YUV(188.6810, -19.5627,
21.3278)**

Conversions

Conversions Part 1

Format	Color
Hex	D5B895
RGB	213, 184, 149
RGB Percent	84%, 72%, 58%
CMY	0.1647, 0.2784, 0.4157
CMYK	0.00, 0.14, 0.30, 0.16
HSL	33°, 43%, 71%
HSV	33°, 30%, 84%
XYZ	50.0059, 50.5970, 35.5644
YIQ	188.6810, 28.5190, -4.7370

Conversions

Conversions Part 2

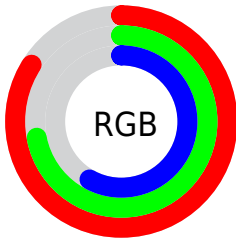
Format	Color
RYB	202, 213, 149
Decimal	14006421
CIELab	76.43, 5.22, 21.63
CIELCh	76, 22.254, 76.435
Yxy	50.5970, 0.3672, 0.3716
Android (android.graphics.Color)	4292196501 (0xFFD5B895)
YUV	188.6810, -19.5627, 21.3278
Hunter-Lab	71.1316, 1.0061, 20.1483

Details

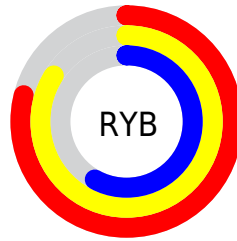
The YUV color $188.6810, -19.5627, 21.3278$ is a light color, and the websafe version is hex `CCCC99`. A complement of this color would be $173.3190, 19.5627, -21.3278$, and the grayscale version is $189.0000, 0.0000, 0.0000$.

A 20% lighter version of the original color is $240.2670, -18.3726, 12.9208$, and $135.0120, -18.2469, 19.2835$ is the 20% darker color. If you saturate the color by 10%, you get $180.4170, -25.8416, 28.5753$, and if you desaturate by 10%, it is $196.9450, -13.2839, 14.0802$.

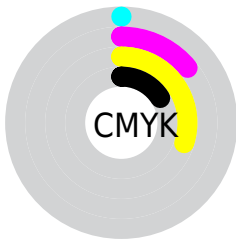
Distribution



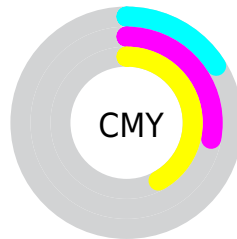
- Red (84%)
- Green (72%)
- Blue (58%)



- Red (79%)
- Yellow (84%)
- Blue (58%)



- Cyan (0%)
- Magenta (14%)
- Yellow (30%)
- Black (16%)



- Cyan (16%)
- Magenta (28%)
- Yellow (42%)

Brightness & Saturation Gradients

These gradients show how the YUV color 188.6810, -19.5627, 21.3278 changes by changing the brightness by 10 percent. The first figure shows a shift by +10% for each color and the second figure -10%.

Similar to the brightness gradients but the following saturation gradients show a change of the YUV color 188.6810, -19.5627, 21.3278 by changing the saturation by 10% instead.

■ 188.6810,
-19.5627, 21.3278

■ 188.6810,
-19.5627, 21.3278

255.0000, 0.0000,
0.0000

■ 161.4960,
-18.9785, 20.6130

■ 240.2670,
-18.3726, 12.9208

■ 135.0120,
-18.2469, 19.2835

■ 252.2640,
-10.4832, 2.3995

■ 109.8270,
-17.6627, 18.5687

■ 85.3430, -16.9311,
17.2392

■ 61.8590, -16.1995,
15.9097

■ 39.1470, -16.3415,
14.7801

■ 19.8460, -9.7841,

11.5361

■ 0.0000, 0.0000,
0.0000

■ 188.6810,
-19.5627, 21.3278

■ 188.6810,
-19.5627, 21.3278

■ 180.4170,
-25.8416, 28.5753

■ 196.9450,
-13.2839, 14.0802

■ 172.6260,
-32.8466, 35.4080

■ 204.7360, -6.2788,
7.2475

■ 164.3620,
-39.1255, 42.6555

■ 213.0000, 0.0000,
0.0000

■ 156.0980,
-45.4043, 49.9031

■ 221.2640, 6.2788,
-7.2475

■ 148.3070,
-52.4094, 56.7358

■ 228.9410, 12.8471,
-13.9803

■ 140.0430,
-58.6882, 63.9833

■ 234.8110, 9.9532,
-19.1282

■ 131.7790,
-64.9670, 71.2308

■ 240.6810, 7.0593,
-24.2762

■ 242.4420, 6.1911,
-25.8206

Harmonies

Analogous

The Analogous color harmony consists of three colors that are next to each other on the color wheel.



190.5990, -15.0853, 31.9237



188.6810, -19.5627, 21.3278



186.5110, -18.4929, 4.8139

Triad

The Triadic color harmony groups three colors that are evenly spaced from another and form a triangle on the color wheel.



188.6810, -19.5627, 21.3278



179.8530, 9.4395, -41.0901



191.9920, 12.3289, 12.2850

Complementary

The Complementary color scheme is a pair of colors which are on the opposite of each other on the color wheel.



188.6810, -19.5627, 21.3278



173.3190, 19.5627, -21.3278

Split Complementary

Split-complementary colors differ from the complementary color scheme. The scheme consists of three colors, the original color and two neighbors of the complement color.



189.5810, 18.9406, -8.4025



188.6810, -19.5627, 21.3278



181.4430, 18.0226, -40.7305

Square

The Square scheme is like the rectangle color scheme, but the four colors are evenly spaced on the color wheel.



188.6810, -19.5627, 21.3278



181.6450, -1.7970, -30.3837



185.0300, 21.1842, -28.0903



192.3870, 3.2602, 27.7246

Rectangle

The Rectangle color scheme consists of four colors that form a rectangle on the color wheel.



188.6810, -19.5627, 21.3278



185.0580, -14.8186, -7.0669



185.0300, 21.1842, -28.0903



191.3440, 15.1134, 5.8373

Sweetspot

The Sweet Spot groups the original color and five complimentary colors.



188.6810, -19.5627, 21.3278



246.5080, -7.1524, 7.4475



171.5560, 3.6699, 36.3464



122.1810, -4.5262, 5.1033



0.0000, 0.0000, 0.0000



128.0000, 0.0000, 0.0000

Same Dimension

The Same Dimension uses a secret algorithm to generate beautiful new colors.



188.6810, -19.5627, 21.3278



219.8580, -28.0310, 30.8195



205.1060, -27.6603, 5.1690



102.8110, -3.3578, 3.6738



105.7200, -52.1200, 57.2506



26.9450, -13.2839, 14.0802

Inverse Universe

The Inverse Universe completely reimagines the original color for something new.



173.3190, 19.5627, -21.3278



198.1420, 28.0310, -30.8195



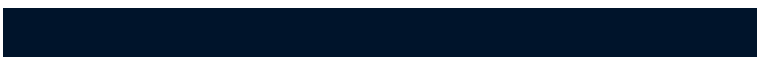
156.8940, 27.6603, -5.1690



100.1890, 3.3578, -3.6738



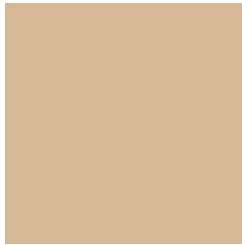
64.6930, 52.4094, -56.7358



16.6420, 12.9945, -14.5950

Previews

White Background



This preview shows how the YUV color 188.6810, -19.5627, 21.3278 looks on a white background.

Color Contrast Check

Large Text (above 18pt) WCAG AA × Fail

Any Text WCAG AA × Fail

Large Text (above 18pt) WCAG AAA × Fail

Any Text WCAG AAA × Fail

Black Background



This preview shows how the YUV color 188.6810, -19.5627, 21.3278 looks on a black background.

Color Contrast Check

Large Text (above 18pt) WCAG AA ✓ Pass

Any Text WCAG AA ✓ Pass

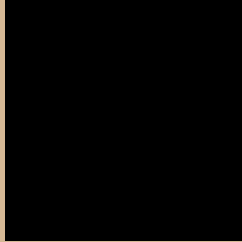
Large Text (above 18pt) WCAG AAA ✓ Pass

Any Text WCAG AAA ✓ Pass

If you want to check with other color combinations, try the [Color Contrast Checker](#).

YUV 188.6810, -19.5627, 21.3278

Background



This preview shows how black text looks on a background with the YUV color 188.6810, -19.5627, 21.3278.



This preview shows how white text looks on a background with the YUV color 188.6810, -19.5627, 21.3278.

Color Blindness Simulation

Color vision deficiency is a very complex topic, and I could not describe the different causes any better than Wikipedia does, so if you want to learn more, you should check out their [article about color blindness](#).

Dichromacy



Original Color

188.6810, -19.5627, 21.3278

Protanopia

187.3700, -17.9304, 11.0765

Deuteranopia

189.1270, -19.2896, 27.0756



Tritanopia

191.5560, 0.2189, 23.1914

Trichromacy



Original Color

188.6810, -19.5627, 21.3278

Protanomaly

188.1640, -18.8149, 14.7652

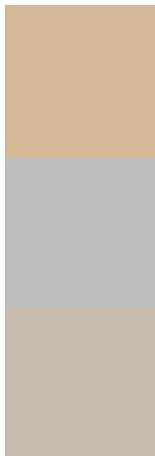
Deuteranomaly

188.8170, -19.1368, 24.7165

Tritanomaly

190.3080, -7.0538, 22.5319

Monochromacy



Original Color

188.6810, -19.5627, 21.3278

Achromatopsia

189.0000, 0.0000, 0.0000

Achromatomaly

188.8070, -7.2999, 8.0623

CSS Examples

Text

The CSS property to change the color of the text to YUV 188.6810, -19.5627, 21.3278 is called "color". The color property can be set on classes, ids or directly on the HTML element.

This example shows how text in the color `rgb(213, 184, 149)` looks like.

```
.text, #text, p{  
    color:rgb(213, 184, 149)  
}
```

If you want to add a text shadow in that color use the text-shadow property, you can generate a text shadow directly with our [CSS Text Shadow Generator](#).

Here you see how black text with a 4 pixel rgb(213, 184, 149) colored shadow looks like.

```
.shadow{ text-shadow: 4px 4px 2px rgb(213, 184, 149) }
```

Border

The CSS property to change the border of an element to YUV 188.6810, -19.5627, 21.3278 is called "border".

The border property can be set on classes, ids or directly on the HTML element.

This example shows the color as border, it can be applied via the CSS property "border" or "border-color".

```
.border, #border, table{ border:4px solid rgb(213, 184, 149) }
```


If only the border color should be changed use the property `border-color`.

```
.border{ border-color:rgb(213, 184, 149) }
```

If you want to add a box shadow in that color use:

Here you see how a box with a 4 pixel `rgb(213, 184, 149)` colored shadow looks like.

```
.boxshadow{ -moz-box-shadow:4px 4px 4px 4px rgb(213, 184, 149); -webkit-box-shadow:4px 4px 4px 4px rgb(213, 184, 149); box-shadow:4px 4px 4px 4px rgb(213, 184, 149) }
```

Background

The CSS property to change the background color of an element to YUV 188.6810, -19.5627, 21.3278 is called "background". The background property can be set on classes, ids or directly on the HTML element.

```
.background, #background, body{  
background: rgb(213, 184, 149) }
```

If only the background color should be changed can be used:

```
.background{ background-color: rgb(213,  
184, 149) }
```

This example shows the color as background, it is applied via the CSS property "background".

To optimize and compress your CSS code, you can use our [online CSS compressor and optimizer](#) based on csstidy. If you want to create a linear or radial gradient as background or border, check our [CSS Gradient Generator](#).

Hey! You found this booklet interesting? Support Converting Colors with the new Membership Option!

The pro membership hides all ads, plus gives you double the colors in the color bucket, and more awesome pro features!

[Learn more, Memberships starting at \\$2.50/m!](#)

**Follow me
on Twitter!**

@ConvertingColor