

Converting Colors

YUV(188.8730, -7.3324,
18.5284)

Have a look what the booklet for
YUV(188.8730, -7.3324, 18.5284)
contains.

YUV(188.8730, -7.3324, 18.5284)	3
<i>Conversions</i>	4
<i>Details</i>	6
<i>Harmonies</i>	12
<i>Previews</i>	24
<i>Color Blindness Simulation</i>	28
<i>CSS Examples</i>	31

Color

**YUV(188.8730, -7.3324,
18.5284)**

Conversions

Conversions Part 1

Format	Color
Hex	D2B5AE
RGB	210, 181, 174
RGB Percent	82%, 71%, 68%
CMY	0.1765, 0.2902, 0.3176
CMYK	0.00, 0.14, 0.17, 0.18
HSL	12°, 29%, 75%
HSV	12°, 17%, 82%
XYZ	50.7422, 49.8054, 46.9834
YIQ	188.8730, 19.5310, 3.9710

Conversions

Conversions Part 2

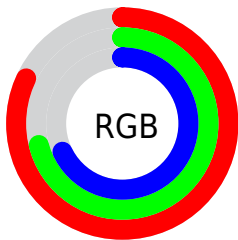
Format	Color
RYB	210, 183, 174
Decimal	13809070
CIELab	75.95, 9.28, 7.40
CIELCh	76, 11.870, 38.574
Yxy	49.8054, 0.3439, 0.3376
Android (android.graphics.Color)	4291999150 (0xFFD2B5AE)
YUV	188.8730, -7.3324, 18.5284
Hunter-Lab	70.5729, 4.8395, 9.9292

Details

The YUV color $188.8730, -7.3324, 18.5284$ is a light color, and the websafe version is hex $CC9999$. A complement of this color would be $195.1270, 7.3324, -18.5284$, and the grayscale version is $189.0000, 0.0000, 0.0000$.

A 20% lighter version of the original color is $241.4700, -6.1477, 11.8658$, and $135.3890, -6.6008, 17.1988$ is the 20% darker color. If you saturate the color by 10%, you get $176.5000, -11.5855, 29.3795$, and if you desaturate by 10%, it is $201.2460, -3.0793, 7.6773$.

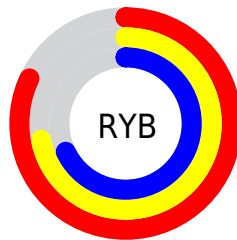
Distribution



Red (82%)

Green (71%)

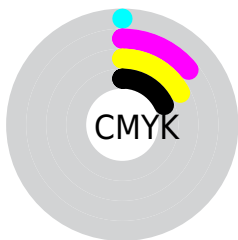
Blue (68%)



Red (82%)

Yellow (72%)

Blue (68%)

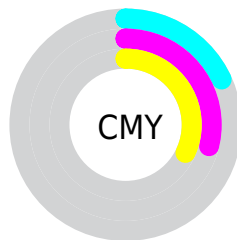


Cyan (0%)

Magenta (14%)

Yellow (17%)

Black (18%)



Cyan (18%)

Magenta (29%)

Yellow (32%)

Brightness & Saturation Gradients

These gradients show how the YUV color 188.8730, -7.3324, 18.5284 changes by changing the brightness by 10 percent. The first figure shows a shift by +10% for each color and the second figure -10%.

Similar to the brightness gradients but the following saturation gradients show a change of the YUV color 188.8730, -7.3324, 18.5284 by changing the saturation by 10% instead.


 188.8730, -7.3324,
18.5284

 188.8730, -7.3324,
18.5284


255.0000, 0.0000,
0.0000


 161.5740, -7.1850,
17.9136


 241.4700, -6.1477,
11.8658

 135.3890, -6.6008,
17.1988

 110.0900, -6.4534,
16.5841

 85.4920, -6.1586,
15.3545

 62.3070, -5.5744,
14.6398

 40.4100, -5.1321,
12.7954

 18.5520, -7.1741,

14.4249

■ 0.0000, 0.0000,
0.0000

■ 188.8730, -7.3324,
18.5284

■ 188.8730, -7.3324,
18.5284

■ 176.5000,
-11.5855, 29.3795

■ 201.2460, -3.0793,
7.6773

■ 164.1270,
-15.8386, 40.2306

■ 213.6190, 1.1738,
-3.1739

■ 151.7540,
-20.0917, 51.0817

■ 225.9920, 5.4269,
-14.0250

■ 139.3810,
-24.3448, 61.9329

■ 238.0230, 8.3697,
-24.5762

■ 127.0080,
-28.5979, 72.7840

■ 241.5450, 6.6333,
-27.6650

■ 115.2220,
-33.1404, 83.1203

■ 102.8490,
-37.3936, 93.9714

■ 90.4760, -41.6467,
104.8225

■ 86.8570, -42.8205,
107.9964

Harmonies

Analogous

The Analogous color harmony consists of three colors that are next to each other on the color wheel.



189.4260, -2.6750, 18.0434



188.8730, -7.3324, 18.5284



188.0420, -10.3737, 13.9952

Triad

The Triadic color harmony groups three colors that are evenly spaced from another and form a triangle on the color wheel.



188.8730, -7.3324, 18.5284



184.2280, -2.5774, -13.3550



187.4150, 10.6414, -6.5030

Complementary

The Complementary color scheme is a pair of colors which are on the opposite of each other on the color wheel.



188.8730, -7.3324, 18.5284



195.1270, 7.3324, -18.5284

Split Complementary

Split-complementary colors differ from the complementary color scheme. The scheme consists of three colors, the original color and two neighbors of the complement color.



185.6480, 10.5265, -16.3543



188.8730, -7.3324, 18.5284



183.6770, 3.1172, -19.8877

Square

The Square scheme is like the rectangle color scheme, but the four colors are evenly spaced on the color wheel.



188.8730, -7.3324, 18.5284



185.3170, -7.5513, -4.6630



183.9310, 7.9220, -20.9875



188.3840, 7.6987, 4.0482

Rectangle

The Rectangle color scheme consists of four colors that form a rectangle on the color wheel.



188.8730, -7.3324, 18.5284



186.8950, -10.7942, 8.8621



183.9310, 7.9220, -20.9875



186.5070, 11.0890, -10.0916

Sweetspot

The Sweet Spot groups the original color and five complimentary colors.



188.8730, -7.3324, 18.5284



247.6480, -2.7845, 6.4477



188.0700, 7.3605, 19.2326



122.9790, -1.4686, 4.4034



0.0000, 0.0000, 0.0000



128.0000, 0.0000, 0.0000

Same Dimension

The Same Dimension uses a secret algorithm to generate beautiful new colors.



188.8730, -7.3324, 18.5284



223.6030, -11.1433, 27.5352



199.4390, -12.5414, 9.2620



98.4630, -2.2003, 5.7329



69.6030, -34.3143, 86.2942



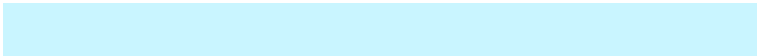
16.9550, -8.3588, 21.0875

Inverse Universe

The Inverse Universe completely reimagines the original color for something new.



195.1270, 7.3324, -18.5284



232.9840, 10.8539, -28.0500



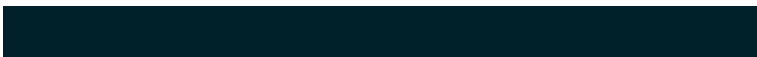
184.5610, 12.5414, -9.2620



100.5370, 2.2003, -5.7329



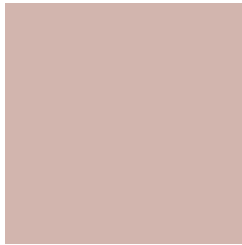
98.9840, 34.0249, -86.8090



24.0450, 8.3588, -21.0875

Previews

White Background



This preview shows how the YUV color 188.8730, -7.3324, 18.5284 looks on a white background.

Color Contrast Check

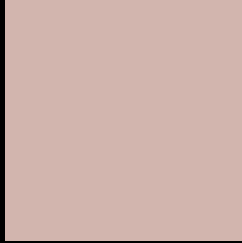
Large Text (above 18pt) WCAG AA × Fail

Any Text WCAG AA × Fail

Large Text (above 18pt) WCAG AAA × Fail

Any Text WCAG AAA × Fail

Black Background



This preview shows how the YUV color 188.8730, -7.3324, 18.5284 looks on a black background.

Color Contrast Check

Large Text (above 18pt) WCAG AA ✓ Pass

Any Text WCAG AA ✓ Pass

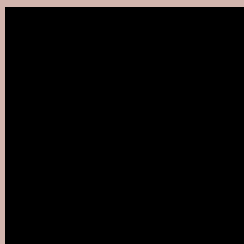
Large Text (above 18pt) WCAG AAA ✓ Pass

Any Text WCAG AAA ✓ Pass

If you want to check with other color combinations, try the [Color Contrast Checker](#).

YUV 188.8730, -7.3324, 18.5284

Background



This preview shows how black text looks on a background with the YUV color 188.8730, -7.3324, 18.5284.



This preview shows how white text looks on a background with the YUV color 188.8730, -7.3324,

18.5284.

Color Blindness Simulation

Color vision deficiency is a very complex topic, and I could not describe the different causes any better than Wikipedia does, so if you want to learn more, you should check out their [article about color blindness](#).

Dichromacy



Original Color

188.8730, -7.3324, 18.5284

Protanopia

187.6540, -5.2524, 4.6884

Deuteranopia

188.8730, -7.3324, 18.5284



Tritanopia

189.7620, 1.1033, 19.5027

Trichromacy



Original Color

188.8730, -7.3324, 18.5284

Protanomaly

188.1600, -5.9949, 9.5067

Deuteranomaly

188.8730, -7.3324, 18.5284

Tritanomaly

189.2520, -2.0962, 19.0730

Monochromacy



Original Color

188.8730, -7.3324, 18.5284

Achromatopsia

189.0000, 0.0000, 0.0000

Achromatomaly

189.0610, -2.4951, 6.9625

CSS Examples

Text

The CSS property to change the color of the text to YUV 188.8730, -7.3324, 18.5284 is called "color". The color property can be set on classes, ids or directly on the HTML element.

This example shows how text in the color `rgb(210, 181, 174)` looks like.

```
.text, #text, p{  
    color:rgb(210, 181, 174)  
}
```

If you want to add a text shadow in that color use the text-shadow property, you can generate a text shadow directly with our [CSS Text Shadow Generator](#).

Here you see how black text with a 4 pixel rgb(210, 181, 174) colored shadow looks like.

```
.shadow{ text-shadow: 4px 4px 2px rgb(210, 181, 174) }
```

Border

The CSS property to change the border of an element to YUV 188.8730, -7.3324, 18.5284 is called "border". The border property can be set on classes, ids or directly on the HTML element.

This example shows the color as border, it can be applied via the CSS property "border" or "border-color".

```
.border, #border, table{ border:4px solid rgb(210, 181, 174) }
```


If only the border color should be changed use the property `border-color`.

```
.border{ border-color:rgb(210, 181, 174) }
```

If you want to add a box shadow in that color use:

Here you see how a box with a 4 pixel `rgb(210, 181, 174)` colored shadow looks like.

```
.boxshadow{ -moz-box-shadow:4px 4px 4px  
4px rgb(210, 181, 174); -webkit-box-  
shadow:4px 4px 4px 4px rgb(210, 181, 174);  
box-shadow:4px 4px 4px 4px rgb(210, 181,  
174) }
```

Background

The CSS property to change the background color of an element to YUV 188.8730, -7.3324, 18.5284 is called "background". The background property can be set on classes, ids or directly on the HTML element.

```
.background, #background, body{  
background: rgb(210, 181, 174) }
```

If only the background color should be changed can be used:

```
.background{ background-color: rgb(210,  
181, 174) }
```

This example shows the color as background, it is applied via the CSS property "background".

To optimize and compress your CSS code, you can use our [online CSS compressor and optimizer](#) based on csstidy. If you want to create a linear or radial gradient as background or border, check our [CSS Gradient Generator](#).

Hey! You found this booklet interesting? Support Converting Colors with the new Membership Option!

The pro membership hides all ads, plus gives you double the colors in the color bucket, and more awesome pro features!

[Learn more, Memberships starting at \\$2.50/m!](#)

**Follow me
on Twitter!**

@ConvertingColor