

Converting Colors

YUV(189.6450, -24.9680,
28.3753)

Have a look what the booklet for
YUV(189.6450, -24.9680, 28.3753)
contains.

YUV(189.6450, -24.9680, 28.3753)	3
<i>Conversions</i>	4
<i>Details</i>	6
<i>Harmonies</i>	12
<i>Previews</i>	24
<i>Color Blindness Simulation</i>	28
<i>CSS Examples</i>	31

Color

**YUV(189.6450, -24.9680,
28.3753)**

Conversions

Conversions Part 1

Format	Color
Hex	DEB78B
RGB	222, 183, 139
RGB Percent	87%, 72%, 55%
CMY	0.1294, 0.2824, 0.4549
CMYK	0.00, 0.18, 0.37, 0.13
HSL	32°, 56%, 71%
HSV	32°, 37%, 87%
XYZ	51.7179, 51.2606, 31.5946
YIQ	189.6450, 37.3680, -5.4160

Conversions

Conversions Part 2

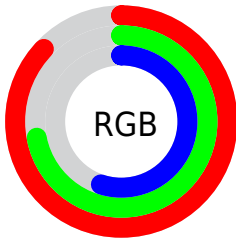
Format	Color
RYB	213, 222, 139
Decimal	14595979
CIELab	76.84, 8.04, 27.66
CIELCh	77, 28.800, 73.790
Yxy	51.2606, 0.3843, 0.3809
Android (android.graphics.Color)	4292786059 (0xFFDEB78B)
YUV	189.6450, -24.9680, 28.3753
Hunter-Lab	71.5965, 3.6458, 23.9537

Details

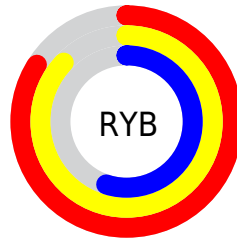
The YUV color **189.6450, -24.9680, 28.3753** is a light color, and the websafe version is hex **FFCC99**. A complement of this color would be **171.3550, 24.9680, -28.3753**, and the grayscale version is **190.0000, 0.0000, 0.0000**.

A 20% lighter version of the original color is **238.5400, -22.4512, 14.4354**, and **135.6770, -23.5048, 25.7163** is the 20% darker color. If you saturate the color by 10%, you get **181.2670, -31.6836, 35.7228**, and if you desaturate by 10%, it is **198.0230, -18.2523, 21.0278**.

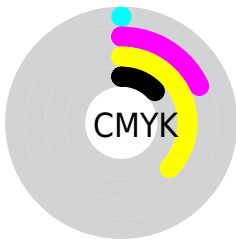
Distribution



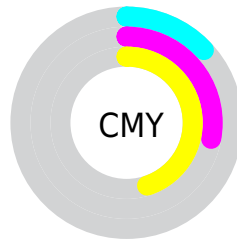
- Red (87%)
- Green (72%)
- Blue (55%)



- Red (84%)
- Yellow (87%)
- Blue (55%)



- Cyan (0%)
- Magenta (18%)
- Yellow (37%)
- Black (13%)



- Cyan (13%)
- Magenta (28%)
- Yellow (45%)

Brightness & Saturation Gradients

These gradients show how the YUV color 189.6450, -24.9680, 28.3753 changes by changing the brightness by 10 percent. The first figure shows a shift by +10% for each color and the second figure -10%.

Similar to the brightness gradients but the following saturation gradients show a change of the YUV color 189.6450, -24.9680, 28.3753 by changing the saturation by 10% instead.

■ 189.6450,
-24.9680, 28.3753

■ 189.6450,
-24.9680, 28.3753

■ 255.0000, 0.0000,
0.0000

■ 162.1610,
-24.2364, 27.0458

■ 238.5400,
-22.4512, 14.4354

■ 135.6770,
-23.5048, 25.7163

■ 251.1240,
-14.8511, 3.3993

■ 110.3070,
-22.3364, 24.2868

■ 254.3160, -2.6208,
0.5999

■ 85.5240, -21.4573,
22.3425

■ 62.0400, -20.7257,
21.0129

■ 39.3710, -19.4099,
18.9686

■ 20.4550, -10.0843,

14.5100

■ 0.0000, 0.0000,
0.0000

■ 189.6450,
-24.9680, 28.3753

■ 189.6450,
-24.9680, 28.3753

■ 181.2670,
-31.6836, 35.7228

■ 198.0230,
-18.2523, 21.0278

■ 172.3020,
-38.1099, 43.5851

■ 206.9880,
-11.8261, 13.1655

■ 163.8100,
-45.2623, 51.0326

■ 215.4800, -4.6736,
5.7180

■ 154.8450,
-51.6886, 58.8949

■ 224.4450, 1.7526,
-2.1443

■ 146.4670,
-58.4042, 66.2424

■ 232.8230, 8.4683,
-9.4918

■ 137.5020,
-64.8305, 74.1047

■ 239.8500, 7.4690,
-15.6544

■ 135.6440,
-66.8725, 75.7342

■ 245.1330, 4.8644,
-20.2876

Harmonies

Analogous

The Analogous color harmony consists of three colors that are next to each other on the color wheel.



191.7420, -18.6068, 41.4453



189.6450, -24.9680, 28.3753



187.0400, -24.1767, 7.8579

Triad

The Triadic color harmony groups three colors that are evenly spaced from another and form a triangle on the color wheel.



189.6450, -24.9680, 28.3753



177.3350, 11.6668, -55.5448



193.5560, 16.9809, 13.5444

Complementary

The Complementary color scheme is a pair of colors which are on the opposite of each other on the color wheel.



189.6450, -24.9680, 28.3753



171.3550, 24.9680, -28.3753

Split Complementary

Split-complementary colors differ from the complementary color scheme. The scheme consists of three colors, the original color and two neighbors of the complement color.



189.8560, 25.2140, -13.9057



189.6450, -24.9680, 28.3753



177.8260, 23.7498, -57.7294

Square

The Square scheme is like the rectangle color scheme, but the four colors are evenly spaced on the color wheel.



189.6450, -24.9680, 28.3753



180.2480, -3.0803, -38.8055



183.3750, 27.9161, -40.6709



194.3000, 5.2751, 34.8169

Rectangle

The Rectangle color scheme consists of four colors that form a rectangle on the color wheel.



189.6450, -24.9680, 28.3753



185.0920, -19.7654, -7.0967



183.3750, 27.9161, -40.6709



192.7120, 20.3550, 4.6376

Sweetspot

The Sweet Spot groups the original color and five complimentary colors.



189.6450, -24.9680, 28.3753



244.1770, -8.4683, 9.4918



168.3770, 5.2371, 47.0274



121.3660, -5.1104, 5.8180



0.0000, 0.0000, 0.0000



128.0000, 0.0000, 0.0000

Same Dimension

The Same Dimension uses a secret algorithm to generate beautiful new colors.



189.6450, -24.9680, 28.3753



210.1920, -34.6047, 39.2966



212.2390, -36.1068, 7.6834



107.8110, -3.3578, 3.6738



107.2150, -52.8570, 60.3244



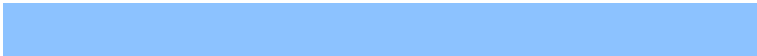
29.6140, -14.5997, 16.1245

Inverse Universe

The Inverse Universe completely reimagines the original color for something new.



171.3550, 24.9680, -28.3753



184.8080, 34.6047, -39.2966



148.7610, 36.1068, -7.6834



105.1890, 3.3578, -3.6738



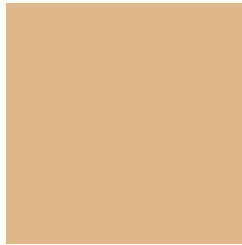
68.7850, 52.8570, -60.3244



18.9730, 14.3103, -16.6393

Previews

White Background



This preview shows how the YUV color 189.6450, -24.9680, 28.3753 looks on a white background.

Color Contrast Check

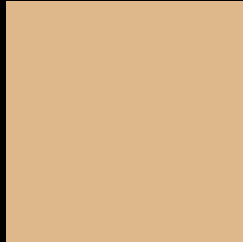
Large Text (above 18pt) WCAG AA × Fail

Any Text WCAG AA × Fail

Large Text (above 18pt) WCAG AAA × Fail

Any Text WCAG AAA × Fail

Black Background



This preview shows how the YUV color 189.6450, -24.9680, 28.3753 looks on a black background.

Color Contrast Check

Large Text (above 18pt) WCAG AA ✓ Pass

Any Text WCAG AA ✓ Pass

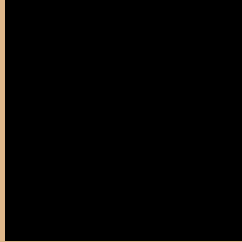
Large Text (above 18pt) WCAG AAA ✓ Pass

Any Text WCAG AAA ✓ Pass

If you want to check with other color combinations, try the [Color Contrast Checker](#).

YUV 189.6450, -24.9680, 28.3753

Background



This preview shows how black text looks on a background with the YUV color 189.6450, -24.9680, 28.3753.



This preview shows how white text looks on a background with the YUV color 189.6450, -24.9680,

Color Blindness Simulation

Color vision deficiency is a very complex topic, and I could not describe the different causes any better than Wikipedia does, so if you want to learn more, you should check out their [article about color blindness](#).

Dichromacy



Original Color

189.6450, -24.9680, 28.3753

Protanopia

188.4150, -22.8826, 12.7910

Deuteranopia

189.9550, -25.1208, 30.7345



Tritanopia

192.8450, -1.4026, 29.9539

Trichromacy



Original Color

189.6450, -24.9680, 28.3753

Protanomaly

188.6330, -23.4831, 18.7389

Deuteranomaly

189.6560, -24.9734, 30.1197

Tritanomaly

191.8420, -10.2751, 29.0796

Monochromacy



Original Color

189.6450, -24.9680, 28.3753

Achromatopsia

190.0000, 0.0000, 0.0000

Achromatomaly

189.6610, -9.1999, 10.8213

CSS Examples

Text

The CSS property to change the color of the text to YUV 189.6450, -24.9680, 28.3753 is called "color". The color property can be set on classes, ids or directly on the HTML element.

This example shows how text in the color `rgb(222, 183, 139)` looks like.

```
.text, #text, p{  
    color:rgb(222, 183, 139)  
}
```

If you want to add a text shadow in that color use the text-shadow property, you can generate a text shadow directly with our [CSS Text Shadow Generator](#).

Here you see how black text with a 4 pixel rgb(222, 183, 139) colored shadow looks like.

```
.shadow{ text-shadow: 4px 4px 2px rgb(222, 183, 139) }
```

Border

The CSS property to change the border of an element to YUV 189.6450, -24.9680, 28.3753 is called "border".

The border property can be set on classes, ids or directly on the HTML element.

This example shows the color as border, it can be applied via the CSS property "border" or "border-color".

```
.border, #border, table{ border:4px solid rgb(222, 183, 139) }
```


If only the border color should be changed use the property `border-color`.

```
.border{ border-color:rgb(222, 183, 139) }
```

If you want to add a box shadow in that color use:

Here you see how a box with a 4 pixel `rgb(222, 183, 139)` colored shadow looks like.

```
.boxshadow{ -moz-box-shadow:4px 4px 4px  
4px rgb(222, 183, 139); -webkit-box-  
shadow:4px 4px 4px 4px rgb(222, 183, 139);  
box-shadow:4px 4px 4px 4px rgb(222, 183,  
139) }
```

Background

The CSS property to change the background color of an element to YUV 189.6450, -24.9680, 28.3753 is called "background". The background property can be set on classes, ids or directly on the HTML element.

```
.background, #background, body{  
background: rgb(222, 183, 139) }
```

If only the background color should be changed can be used:

```
.background{ background-color: rgb(222,  
183, 139) }
```

This example shows the color as background, it is applied via the CSS property "background".

To optimize and compress your CSS code, you can use our [online CSS compressor and optimizer](#) based on csstidy. If you want to create a linear or radial gradient as background or border, check our [CSS Gradient Generator](#).

Hey! You found this booklet interesting? Support Converting Colors with the new Membership Option!

The pro membership hides all ads, plus gives you double the colors in the color bucket, and more awesome pro features!

[Learn more, Memberships starting at \\$2.50/m!](#)

**Follow me
on Twitter!**

@ConvertingColor