

Converting Colors

YUV(190.2450, 1.8512, 12.9401)

Have a look what the booklet for
YUV(190.2450, 1.8512, 12.9401)
contains.

YUV(190.2450, 1.8512, 12.9401)	3
<i>Conversions</i>	4
<i>Details</i>	6
<i>Harmonies</i>	12
<i>Previews</i>	24
<i>Color Blindness Simulation</i>	28
<i>CSS Examples</i>	31

Color

**YUV(190.2450, 1.8512,
12.9401)**

Conversions

Conversions Part 1

Format	Color
Hex	CDB6C2
RGB	205, 182, 194
RGB Percent	80%, 71%, 76%
CMY	0.1961, 0.2863, 0.2392
CMYK	0.00, 0.11, 0.05, 0.20
HSL	329°, 19%, 76%
HSV	329°, 11%, 80%
XYZ	51.6424, 50.3301, 58.0318
YIQ	190.2450, 9.8560, 8.6080

Conversions

Conversions Part 2

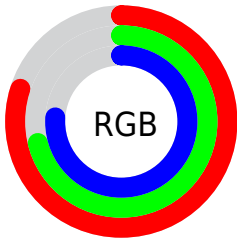
Format	Color
R _Y B	205, 182, 194
Decimal	13481666
CIE Lab	76.27, 10.28, -3.07
CIE LCh	76, 10.725, 343.384
Yxy	50.3301, 0.3228, 0.3146
Android (android.graphics.Color)	4291671746 (0xFFCDB6C2)
YUV	190.2450, 1.8512, 12.9401
Hunter-Lab	70.9437, 5.7849, 1.1615

Details

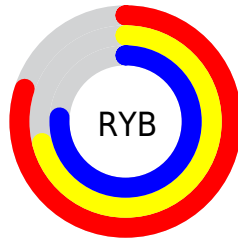
The YUV color $190.2450, 1.8512, 12.9401$ is a light color, and the websafe version is hex $CCCCCC$. A complement of this color would be $196.7550, -1.8512, -12.9401$, and the grayscale version is $190.0000, 0.0000, 0.0000$.

A 20% lighter version of the original color is $244.4510, 2.7357, 9.2515$, and $136.8320, 1.5618, 12.4253$ is the 20% darker color. If you saturate the color by 10%, you get $177.3650, 3.2711, 24.2359$, and if you desaturate by 10%, it is $203.7120, 0.1420, 1.1296$.

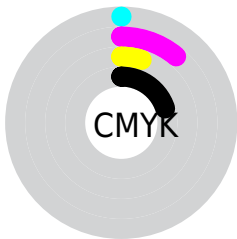
Distribution



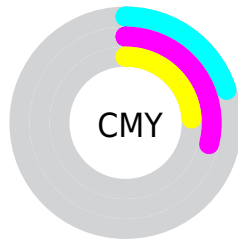
- Red (80%)
- Green (71%)
- Blue (76%)



- Red (80%)
- Yellow (71%)
- Blue (76%)



- Cyan (0%)
- Magenta (11%)
- Yellow (5%)
- Black (20%)



- Cyan (20%)
- Magenta (29%)
- Yellow (24%)

Brightness & Saturation Gradients

These gradients show how the YUV color 190.2450, 1.8512, 12.9401 changes by changing the brightness by 10 percent. The first figure shows a shift by +10% for each color and the second figure -10%.

Similar to the brightness gradients but the following saturation gradients show a change of the YUV color 190.2450, 1.8512, 12.9401 by changing the saturation by 10% instead.

■ 190.2450, 1.8512,
12.9401

■ 190.2450, 1.8512,
12.9401

255.0000, 0.0000,
0.0000

■ 162.9460, 1.9986,
12.3254

■ 244.4510, 2.7357,
9.2515

■ 136.8320, 1.5618,
12.4253

■ 111.5330, 1.7092,
11.8106

■ 87.1200, 1.4198,
11.2958

■ 63.8210, 1.5672,
10.6810

■ 41.5220, 1.7147,
10.0662

■ 20.8100, 1.5727,

8.9366

■ 0.0000, 0.0000,
0.0000

■ 190.2450, 1.8512,
12.9401

■ 190.2450, 1.8512,
12.9401

■ 177.3650, 3.2711,
24.2359

■ 203.7120, 0.1420,
1.1296

■ 163.8980, 4.9803,
36.0465

■ 216.5920, -1.2779,
-10.1662

■ 151.1320, 6.8369,
47.2422

■ 229.3580, -3.1345,
-21.3620

■ 137.6650, 8.5462,
59.0528

■ 237.5420, -2.2392,
-28.5393

■ 124.7850, 9.9660,
70.3486

■ 238.6820, 2.1288,
-29.5391

■ 111.3180, 11.6752,
82.1591

■ 239.8220, 6.4968,
-30.5389

■ 98.4380, 13.0951,
93.4549

■ 240.0500, 7.3704,
-30.7388

■ 85.0850, 15.2411,
105.1655

■ 73.4930, 16.5190,
115.3316

Harmonies

Analogous

The Analogous color harmony consists of three colors that are next to each other on the color wheel.



189.7540, 6.5303, 5.4777



190.2450, 1.8512, 12.9401



190.0130, -2.9644, 17.5286

Triad

The Triadic color harmony groups three colors that are evenly spaced from another and form a triangle on the color wheel.



190.2450, 1.8512, 12.9401



187.6170, -9.1782, 3.8439



185.5400, 7.6218, -18.0136

Complementary

The Complementary color scheme is a pair of colors which are on the opposite of each other on the color wheel.



190.2450, 1.8512, 12.9401



196.7550, -1.8512, -12.9401

Split Complementary

Split-complementary colors differ from the complementary color scheme. The scheme consists of three colors, the original color and two neighbors of the complement color.



184.8020, 3.5486, -18.2434



190.2450, 1.8512, 12.9401



186.3600, -6.0935, -5.5777

Square

The Square scheme is like the rectangle color scheme, but the four colors are evenly spaced on the color wheel.



190.2450, 1.8512, 12.9401



188.8460, -9.7841, 11.5361



185.4560, -1.7038, -13.5549



187.1430, 9.7895, -13.2804

Rectangle

The Rectangle color scheme consists of four colors that form a rectangle on the color wheel.



190.2450, 1.8512, 12.9401



189.6170, -5.7272, 16.9989



185.4560, -1.7038, -13.5549



185.6000, 6.6062, -18.9432

Sweetspot

The Sweet Spot groups the original color and five complimentary colors.



190.2450, 1.8512, 12.9401



249.8480, 0.5679, 4.5183



187.9110, 8.4249, 4.4631



124.1360, 0.4260, 3.3887



0.0000, 0.0000, 0.0000



128.0000, 0.0000, 0.0000

Same Dimension

The Same Dimension uses a secret algorithm to generate beautiful new colors.



190.2450, 1.8512, 12.9401



233.8050, 2.5611, 18.5880



188.9910, -2.9536, 14.0399



95.5600, 0.7099, 5.6479



59.4380, 13.0951, 93.4549



13.6420, 3.1345, 21.3620

Inverse Universe

The Inverse Universe completely reimagines the original color for something new.



190.2450, 1.8512, 12.9401



233.8050, 2.5611, 18.5880



198.0090, 2.9536, -14.0399



95.5600, 0.7099, 5.6479



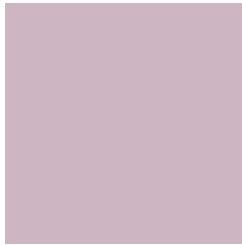
59.4380, 13.0951, 93.4549



13.6420, 3.1345, 21.3620

Previews

White Background



This preview shows how the YUV color 190.2450, 1.8512, 12.9401 looks on a white background.

Color Contrast Check

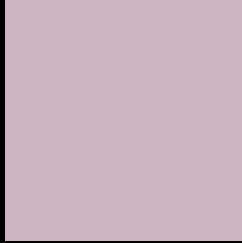
Large Text (above 18pt) WCAG AA × Fail

Any Text WCAG AA × Fail

Large Text (above 18pt) WCAG AAA × Fail

Any Text WCAG AAA × Fail

Black Background



This preview shows how the YUV color 190.2450, 1.8512, 12.9401 looks on a black background.

Color Contrast Check

Large Text (above 18pt) WCAG AA ✓ Pass

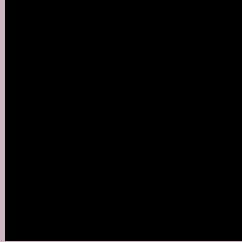
Any Text WCAG AA ✓ Pass

Large Text (above 18pt) WCAG AAA ✓ Pass

Any Text WCAG AAA ✓ Pass

If you want to check with other color combinations, try the [Color Contrast Checker](#).

YUV 190.2450, 1.8512, 12.9401 Background



This preview shows how black text looks on a background with the YUV color 190.2450, 1.8512, 12.9401.



This preview shows how white text looks on a background with the YUV color 190.2450, 1.8512,

Color Blindness Simulation

Color vision deficiency is a very complex topic, and I could not describe the different causes any better than Wikipedia does, so if you want to learn more, you should check out their [article about color blindness](#).

Dichromacy



Original Color

190.2450, 1.8512, 12.9401

Protanopia

188.7380, 4.0732, 0.2298

Deuteranopia

189.9460, 1.9986, 12.3254



Tritanopia

190.4730, 2.7248, 12.7402

Trichromacy



Original Color

190.2450, 1.8512, 12.9401

Protanomaly

189.2440, 3.3307, 5.0480

Deuteranomaly

189.9460, 1.9986, 12.3254

Tritanomaly

190.3590, 2.2880, 12.8402

Monochromacy



Original Color

190.2450, 1.8512, 12.9401

Achromatopsia

190.0000, 0.0000, 0.0000

Achromatomaly

189.8480, 0.5679, 4.5183

CSS Examples

Text

The CSS property to change the color of the text to YUV 190.2450, 1.8512, 12.9401 is called "color". The color property can be set on classes, ids or directly on the HTML element.

This example shows how text in the color `rgb(205, 182, 194)` looks like.

```
.text, #text, p{  
    color:rgb(205, 182, 194)  
}
```

If you want to add a text shadow in that color use the text-shadow property, you can generate a text shadow directly with our [CSS Text Shadow Generator](#).

Here you see how black text with a 4 pixel rgb(205, 182, 194) colored shadow looks like.

```
.shadow{ text-shadow: 4px 4px 2px rgb(205, 182, 194) }
```

Border

The CSS property to change the border of an element to YUV 190.2450, 1.8512, 12.9401 is called "border". The border property can be set on classes, ids or directly on the HTML element.

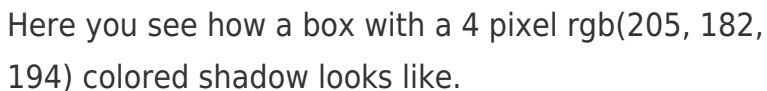
This example shows the color as border, it can be applied via the CSS property "border" or "border-color".

```
.border, #border, table{ border:4px solid rgb(205, 182, 194) }
```


If only the border color should be changed use the property border-color.

```
.border{ border-color:rgb(205, 182, 194) }
```

If you want to add a box shadow in that color use:



Here you see how a box with a 4 pixel rgb(205, 182, 194) colored shadow looks like.

```
.boxshadow{ -moz-box-shadow:4px 4px 4px  
4px rgb(205, 182, 194); -webkit-box-  
shadow:4px 4px 4px 4px rgb(205, 182, 194);  
box-shadow:4px 4px 4px 4px rgb(205, 182,  
194) }
```

Background

The CSS property to change the background color of an element to YUV 190.2450, 1.8512, 12.9401 is called "background". The background property can be set on classes, ids or directly on the HTML element.

```
.background, #background, body{  
background: rgb(205, 182, 194) }
```

If only the background color should be changed can be used:

```
.background{ background-color: rgb(205,  
182, 194) }
```

This example shows the color as background, it is applied via the CSS property "background".

To optimize and compress your CSS code, you can use our [online CSS compressor and optimizer](#) based on csstidy. If you want to create a linear or radial gradient as background or border, check our [CSS Gradient Generator](#).

Hey! You found this booklet interesting? Support Converting Colors with the new Membership Option!

The pro membership hides all ads, plus gives you double the colors in the color bucket, and more awesome pro features!

[Learn more, Memberships starting at \\$2.50/m!](#)

**Follow me
on Twitter!**

@ConvertingColor