

Converting Colors

YUV(190.5640, -8.6591,
24.0614)

Have a look what the booklet for
YUV(190.5640, -8.6591, 24.0614)
contains.

YUV(190.5640, -8.6591, 24.0614)	3
<i>Conversions</i>	4
<i>Details</i>	6
<i>Harmonies</i>	12
<i>Previews</i>	24
<i>Color Blindness Simulation</i>	28
<i>CSS Examples</i>	31

Color

**YUV(190.5640, -8.6591,
24.0614)**

Conversions

Conversions Part 1

Format	Color
Hex	DAB4AD
RGB	218, 180, 173
RGB Percent	85%, 71%, 68%
CMY	0.1451, 0.2941, 0.3216
CMYK	0.00, 0.17, 0.21, 0.15
HSL	9°, 38%, 77%
HSV	9°, 21%, 85%
XYZ	52.7775, 50.5651, 46.5135
YIQ	190.5640, 24.8950, 5.8790

Conversions

Conversions Part 2

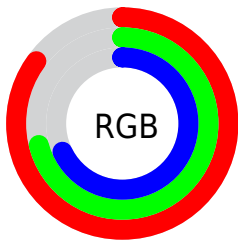
Format	Color
R _Y B	218, 181, 173
Decimal	14333101
CIE Lab	76.41, 12.63, 8.71
CIE LCh	76, 15.339, 34.593
Yxy	50.5651, 0.3522, 0.3374
Android (android.graphics.Color)	4292523181 (0xFFDAB4AD)
YUV	190.5640, -8.6591, 24.0614
Hunter-Lab	71.1091, 8.0426, 10.9939

Details

The YUV color $190.5640, -8.6591, 24.0614$ is a light color, and the websafe version is hex $CC9999$. A complement of this color would be $200.4360, 8.6591, -24.0614$, and the grayscale version is $191.0000, 0.0000, 0.0000$.

A 20% lighter version of the original color is $240.7690, -6.2951, 12.4806$, and $136.7810, -7.7800, 22.1171$ is the 20% darker color. If you saturate the color by 10%, you get $177.4900, -13.0596, 35.5273$, and if you desaturate by 10%, it is $203.6380, -4.2585, 12.5955$.

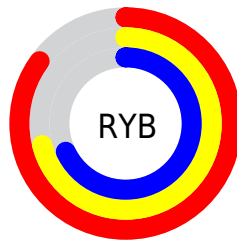
Distribution



Red (85%)

Green (71%)

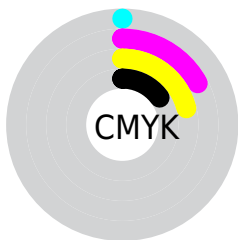
Blue (68%)



Red (85%)

Yellow (71%)

Blue (68%)

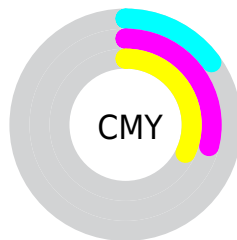


Cyan (0%)

Magenta (17%)

Yellow (21%)

Black (15%)



Cyan (15%)


Magenta (29%)

Yellow (32%)

Brightness & Saturation Gradients

These gradients show how the YUV color 190.5640, -8.6591, 24.0614 changes by changing the brightness by 10 percent. The first figure shows a shift by +10% for each color and the second figure -10%.


Similar to the brightness gradients but the following saturation gradients show a change of the YUV color 190.5640, -8.6591, 24.0614 by changing the saturation by 10% instead.


 190.5640, -8.6591,
24.0614

 190.5640, -8.6591,
24.0614


255.0000, 0.0000,
0.0000

 163.2650, -8.5116,
23.4466


 240.7690, -6.2951,
12.4806

 136.7810, -7.7800,
22.1171

 111.4820, -7.6326,
21.5023

 86.8840, -7.3378,
20.2727

 63.4000, -6.6062,
18.9432

 40.9160, -5.8746,
17.6137

 19.0470, -7.9112,

17.4988

0.0000, 0.0000,
0.0000

190.5640, -8.6591,
24.0614

190.5640, -8.6591,
24.0614

177.4900,
-13.0596, 35.5273

203.6380, -4.2585,
12.5955

163.8290,
-17.1707, 47.5080

217.2990, -0.1474,
0.6148

150.8690,
-21.1344, 58.8739

230.2590, 3.8163,
-10.7511

137.2080,
-25.2455, 70.8546

243.3500, 5.7435,
-22.2319

124.1340,
-29.6461, 82.3205

243.9370, 5.4541,
-22.7467

■ 111.0600,
-34.0466, 93.7864

■ 97.3990, -38.1577,
105.7671

■ 85.1400, -41.9740,
116.5182

Harmonies

Analogous

The Analogous color harmony consists of three colors that are next to each other on the color wheel.



191.5730, -2.2545, 23.1765



190.5640, -8.6591, 24.0614



189.6790, -13.1527, 18.6985

Triad

The Triadic color harmony groups three colors that are evenly spaced from another and form a triangle on the color wheel.



190.5640, -8.6591, 24.0614



184.7500, -4.3137, -16.4437



188.1910, 13.7098, -10.6915

Complementary

The Complementary color scheme is a pair of colors which are on the opposite of each other on the color wheel.



190.5640, -8.6591, 24.0614



200.4360, 8.6591, -24.0614

Split Complementary

Split-complementary colors differ from the complementary color scheme. The scheme consists of three colors, the original color and two neighbors of the complement color.



185.5270, 14.0372, -22.3872



190.5640, -8.6591, 24.0614



183.6440, 3.1335, -25.1208

Square

The Square scheme is like the rectangle color scheme, but the four colors are evenly spaced on the color wheel.



190.5640, -8.6591, 24.0614



186.5190, -10.6089, -3.9632



183.7560, 9.9803, -27.8500



190.1820, 10.7563, 3.3484

Rectangle

The Rectangle color scheme consists of four colors that form a rectangle on the color wheel.



190.5640, -8.6591, 24.0614



188.8200, -13.7153, 12.4359



183.7560, 9.9803, -27.8500



187.5710, 14.0155, -15.4098

Sweetspot

The Sweet Spot groups the original color and five complimentary colors.



190.5640, -8.6591, 24.0614



245.6590, -2.7899, 8.1921



190.7870, 9.9650, 23.8658



122.2780, -1.6161, 5.0182



0.0000, 0.0000, 0.0000



128.0000, 0.0000, 0.0000

Same Dimension

The Same Dimension uses a secret algorithm to generate beautiful new colors.



190.5640, -8.6591, 24.0614



216.0060, -12.3280, 34.1977



203.4780, -15.0257, 12.7358



102.8760, -1.9109, 6.2477



67.5760, -33.3150, 92.4568



17.8630, -8.8065, 24.6761

Inverse Universe

The Inverse Universe completely reimagines the original color for something new.



200.4360, 8.6591, -24.0614



229.9940, 12.3280, -34.1977



187.5220, 15.0257, -12.7358



105.5370, 2.2003, -5.7329



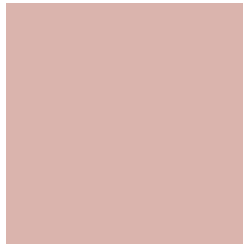
105.4240, 33.3150, -92.4568



28.1370, 8.8065, -24.6761

Previews

White Background



This preview shows how the YUV color 190.5640, -8.6591, 24.0614 looks on a white background.

Color Contrast Check

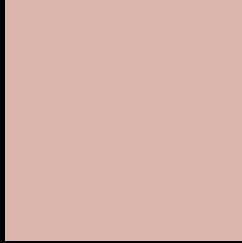
Large Text (above 18pt) WCAG AA × Fail

Any Text WCAG AA × Fail

Large Text (above 18pt) WCAG AAA × Fail

Any Text WCAG AAA × Fail

Black Background



This preview shows how the YUV color 190.5640, -8.6591, 24.0614 looks on a black background.

Color Contrast Check

Large Text (above 18pt) WCAG AA ✓ Pass

Any Text WCAG AA ✓ Pass

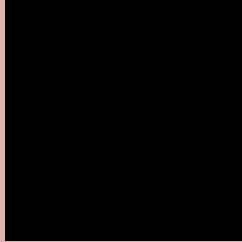
Large Text (above 18pt) WCAG AAA ✓ Pass

Any Text WCAG AAA ✓ Pass

If you want to check with other color combinations, try the [Color Contrast Checker](#).

YUV 190.5640, -8.6591, 24.0614

Background



This preview shows how black text looks on a background with the YUV color 190.5640, -8.6591, 24.0614.



This preview shows how white text looks on a background with the YUV color 190.5640, -8.6591,

Color Blindness Simulation

Color vision deficiency is a very complex topic, and I could not describe the different causes any better than Wikipedia does, so if you want to learn more, you should check out their [article about color blindness](#).

Dichromacy



Original Color

190.5640, -8.6591, 24.0614

Protanopia

188.8390, -5.8366, 5.4032

Deuteranopia

190.2430, -8.5008, 19.9579



Tritanopia

191.4530, -0.2233, 25.0357

Trichromacy



Original Color

190.5640, -8.6591, 24.0614

Protanomaly

189.3560, -6.5845, 11.9658

Deuteranomaly

190.2540, -8.5062, 21.7022

Tritanomaly

190.9430, -3.4229, 24.6060

Monochromacy



Original Color

190.5640, -8.6591, 24.0614

Achromatopsia

191.0000, 0.0000, 0.0000

Achromatomaly

190.8440, -3.3741, 8.9068

CSS Examples

Text

The CSS property to change the color of the text to YUV 190.5640, -8.6591, 24.0614 is called "color". The color property can be set on classes, ids or directly on the HTML element.

This example shows how text in the color `rgb(218, 180, 173)` looks like.

```
.text, #text, p{  
    color:rgb(218, 180, 173)  
}
```

If you want to add a text shadow in that color use the text-shadow property, you can generate a text shadow directly with our [CSS Text Shadow Generator](#).

Here you see how black text with a 4 pixel rgb(218, 180, 173) colored shadow looks like.

```
.shadow{ text-shadow: 4px 4px 2px rgb(218, 180, 173) }
```

Border

The CSS property to change the border of an element to YUV 190.5640, -8.6591, 24.0614 is called "border". The border property can be set on classes, ids or directly on the HTML element.

This example shows the color as border, it can be applied via the CSS property "border" or "border-color".

```
.border, #border, table{ border:4px solid rgb(218, 180, 173) }
```


If only the border color should be changed use the property border-color.

```
.border{ border-color:rgb(218, 180, 173) }
```

If you want to add a box shadow in that color use:

Here you see how a box with a 4 pixel rgb(218, 180, 173) colored shadow looks like.

```
.boxshadow{ -moz-box-shadow:4px 4px 4px  
4px rgb(218, 180, 173); -webkit-box-  
shadow:4px 4px 4px 4px rgb(218, 180, 173);  
box-shadow:4px 4px 4px 4px rgb(218, 180,  
173) }
```

Background

The CSS property to change the background color of an element to YUV 190.5640, -8.6591, 24.0614 is called "background". The background property can be set on classes, ids or directly on the HTML element.

```
.background, #background, body{  
background: rgb(218, 180, 173) }
```

If only the background color should be changed can be used:

```
.background{ background-color: rgb(218,  
180, 173) }
```

This example shows the color as background, it is applied via the CSS property "background".

To optimize and compress your CSS code, you can use our [online CSS compressor and optimizer](#) based on csstidy. If you want to create a linear or radial gradient as background or border, check our [CSS Gradient Generator](#).

Hey! You found this booklet interesting? Support Converting Colors with the new Membership Option!

The pro membership hides all ads, plus gives you double the colors in the color bucket, and more awesome pro features!

[Learn more, Memberships starting at \\$2.50/m!](#)

**Follow me
on Twitter!**

@ConvertingColor