

Converting Colors

YUV(190.8890, -1.4243,
36.9313)

Have a look what the booklet for
YUV(190.8890, -1.4243, 36.9313)
contains.

YUV(190.8890, -1.4243, 36.9313)	3
<i>Conversions</i>	4
<i>Details</i>	6
<i>Harmonies</i>	12
<i>Previews</i>	24
<i>Color Blindness Simulation</i>	28
<i>CSS Examples</i>	31

Color

**YUV(190.8890, -1.4243,
36.9313)**

Conversions

Conversions Part 1

Format	Color
Hex	E9AABC
RGB	233, 170, 188
RGB Percent	91%, 67%, 74%
CMY	0.0863, 0.3333, 0.2627
CMYK	0.00, 0.27, 0.19, 0.09
HSL	343°, 59%, 79%
HSV	343°, 27%, 91%
XYZ	57.0561, 49.7039, 54.1636
YIQ	190.8890, 31.7700, 18.9540

Conversions

Conversions Part 2

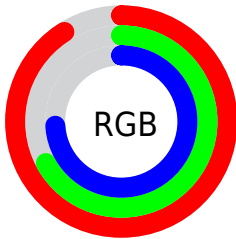
Format	Color
R _Y B	233, 170, 188
Decimal	15313596
CIE Lab	75.89, 25.72, -0.04
CIE LCh	76, 25.720, 359.903
Yxy	49.7039, 0.3546, 0.3089
Android (android.graphics.Color)	4293503676 (0xFFE9AABC)
YUV	190.8890, -1.4243, 36.9313
Hunter-Lab	70.5010, 21.0823, 3.8002

Details

The YUV color **190.8890, -1.4243, 36.9313** is a light color, and the websafe version is hex **CC9999**. A complement of this color would be **212.1110, 1.4243, -36.9313**, and the grayscale version is **191.0000, 0.0000, 0.0000**.

A 20% lighter version of the original color is **236.7230, 3.5876, 16.0289**, and **136.6930, -0.8346, 34.4722** is the 20% darker color. If you saturate the color by 10%, you get **175.4500, -2.1939, 50.4713**, and if you desaturate by 10%, it is **206.3280, -0.6547, 23.3913**.

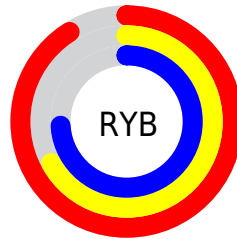
Distribution



Red (91%)

Green (67%)

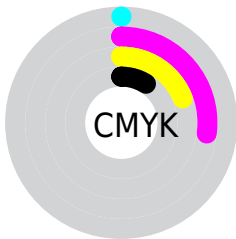
Blue (74%)



Red (91%)

Yellow (67%)

Blue (74%)

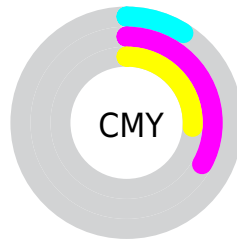


Cyan (0%)

Magenta (27%)

Yellow (19%)

Black (9%)



Cyan (9%)

Magenta (33%)

Yellow (26%)

Brightness & Saturation Gradients

These gradients show how the YUV color 190.8890, -1.4243, 36.9313 changes by changing the brightness by 10 percent. The first figure shows a shift by +10% for each color and the second figure -10%.

Similar to the brightness gradients but the following saturation gradients show a change of the YUV color 190.8890, -1.4243, 36.9313 by changing the saturation by 10% instead.

190.8890, -1.4243,
36.9313

190.8890, -1.4243,
36.9313

255.0000, 0.0000,
0.0000

163.2910, -1.1295,
35.7018

236.7230, 3.5876,
16.0289

136.6930, -0.8346,
34.4722

254.4130, 0.2894,
0.5148

111.0950, -0.5398,
33.2427

86.0840, -0.5344,
31.4983

62.4860, -0.2396,
30.2688

38.7030, 0.6394,
28.3245

16.6320, 1.6604,

27.5097

■ 5.6810, -2.8007,
11.6808

■ 0.0000, 0.0000,
0.0000

■ 190.8890, -1.4243,
36.9313

■ 190.8890, -1.4243,
36.9313

■ 175.4500, -2.1939,
50.4713

■ 206.3280, -0.6547,
23.3913

■ 159.5380, -2.2372,
64.4262

■ 222.2400, -0.6113,
9.4365

■ 144.0990, -3.0068,
77.9662

■ 237.6790, 0.1583,
-4.1035

■ 128.6600, -3.7764,
91.5062

■ 248.4220, 3.2430,
-13.5251

■ 112.7480, -3.8198,
105.4610

■ 97.3090, -4.5893,
119.0010

■ 81.9840, -4.9221,
132.4410

■ 77.3050, -5.0804,
136.5445

Harmonies

Analogous

The Analogous color harmony consists of three colors that are next to each other on the color wheel.



191.3740, 9.6756, 23.3510



190.8890, -1.4243, 36.9313



189.9250, -12.7810, 39.5308

Triad

The Triadic color harmony groups three colors that are evenly spaced from another and form a triangle on the color wheel.



190.8890, -1.4243, 36.9313



183.4560, -18.4658, -3.9079



179.8000, 23.2696, -43.6746

Complementary

The Complementary color scheme is a pair of colors which are on the opposite of each other on the color wheel.



190.8890, -1.4243, 36.9313



212.1110, 1.4243, -36.9313

Split Complementary

Split-complementary colors differ from the complementary color scheme. The scheme consists of three colors, the original color and two neighbors of the complement color.



176.6220, 16.4554, -51.4115



190.8890, -1.4243, 36.9313



180.2560, -8.5072, -24.7805

Square

The Square scheme is like the rectangle color scheme, but the four colors are evenly spaced on the color wheel.



190.8890, -1.4243, 36.9313



185.8500, -22.6040, 16.7946



177.1750, 4.3507, -42.2495



184.8610, 24.2255, -23.5571

Rectangle

The Rectangle color scheme consists of four colors that form a rectangle on the color wheel.



190.8890, -1.4243, 36.9313



188.5240, -18.0063, 35.4975



177.1750, 4.3507, -42.2495



178.4250, 21.9755, -48.6077

Sweetspot

The Sweet Spot groups the original color and five complimentary colors.



190.8890, -1.4243, 36.9313



241.5500, -0.7642, 11.7956



190.3380, 21.0324, 20.7516



119.2290, -0.6059, 7.6922



0.0000, 0.0000, 0.0000



128.0000, 0.0000, 0.0000

Same Dimension

The Same Dimension uses a secret algorithm to generate beautiful new colors.



190.8890, -1.4243, 36.9313



200.2540, -1.6042, 48.0122



196.4680, -13.0487, 32.0386



109.6310, -0.3111, 6.4626



60.0470, -3.9672, 106.0758



17.8560, -1.4080, 31.6983

Inverse Universe

The Inverse Universe completely reimagines the original color for something new.



190.8890, -1.4243, 36.9313



200.2540, -1.6042, 48.0122



206.5320, 13.0487, -32.0386



109.6310, -0.3111, 6.4626



60.0470, -3.9672, 106.0758



17.8560, -1.4080, 31.6983

Previews

White Background



This preview shows how the YUV color 190.8890, -1.4243, 36.9313 looks on a white background.

Color Contrast Check

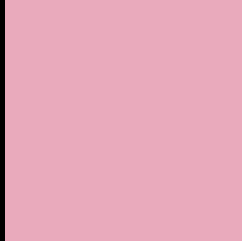
Large Text (above 18pt) WCAG AA × Fail

Any Text WCAG AA × Fail

Large Text (above 18pt) WCAG AAA × Fail

Any Text WCAG AAA × Fail

Black Background



This preview shows how the YUV color 190.8890, -1.4243, 36.9313 looks on a black background.

Color Contrast Check

Large Text (above 18pt) WCAG AA ✓ Pass

Any Text WCAG AA ✓ Pass

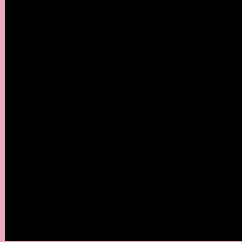
Large Text (above 18pt) WCAG AAA ✓ Pass

Any Text WCAG AAA ✓ Pass

If you want to check with other color combinations, try the [Color Contrast Checker](#).

YUV 190.8890, -1.4243, 36.9313

Background



This preview shows how black text looks on a background with the YUV color 190.8890, -1.4243, 36.9313.



This preview shows how white text looks on a background with the YUV color 190.8890, -1.4243,

Color Blindness Simulation

Color vision deficiency is a very complex topic, and I could not describe the different causes any better than Wikipedia does, so if you want to learn more, you should check out their [article about color blindness](#).

Dichromacy



Original Color

190.8890, -1.4243, 36.9313

Protanopia

187.9660, 4.9468, 0.0298

Deuteranopia

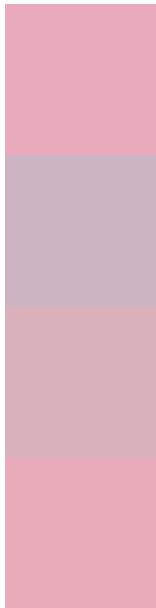
189.0450, -1.5012, 14.8695



Tritanopia

191.0200, -3.4609, 36.8165

Trichromacy



Original Color

190.8890, -1.4243, 36.9313

Protanomaly

188.7720, 2.5774, 13.3550

Deuteranomaly

189.8010, -1.3809, 22.9765

Tritanomaly

191.1340, -3.0241, 36.7165

Monochromacy



Original Color

190.8890, -1.4243, 36.9313

Achromatopsia

191.0000, 0.0000, 0.0000

Achromatomaly

190.6750, -0.3328, 13.4400

CSS Examples

Text

The CSS property to change the color of the text to YUV 190.8890, -1.4243, 36.9313 is called "color". The color property can be set on classes, ids or directly on the HTML element.

This example shows how text in the color `rgb(233, 170, 188)` looks like.

```
.text, #text, p{  
    color:rgb(233, 170, 188)  
}
```

If you want to add a text shadow in that color use the text-shadow property, you can generate a text shadow directly with our [CSS Text Shadow Generator](#).

Here you see how black text with a 4 pixel rgb(233, 170, 188) colored shadow looks like.

```
.shadow{ text-shadow: 4px 4px 2px rgb(233, 170, 188) }
```

Border

The CSS property to change the border of an element to YUV 190.8890, -1.4243, 36.9313 is called "border". The border property can be set on classes, ids or directly on the HTML element.

This example shows the color as border, it can be applied via the CSS property "border" or "border-color".

```
.border, #border, table{ border:4px solid rgb(233, 170, 188) }
```


If only the border color should be changed use the property `border-color`.

```
.border{ border-color:rgb(233, 170, 188) }
```

If you want to add a box shadow in that color use:

Here you see how a box with a 4 pixel `rgb(233, 170, 188)` colored shadow looks like.

```
.boxshadow{ -moz-box-shadow:4px 4px 4px  
4px rgb(233, 170, 188); -webkit-box-  
shadow:4px 4px 4px 4px rgb(233, 170, 188);  
box-shadow:4px 4px 4px 4px rgb(233, 170,  
188) }
```

Background

The CSS property to change the background color of an element to YUV 190.8890, -1.4243, 36.9313 is called "background". The background property can be set on classes, ids or directly on the HTML element.

```
.background, #background, body{  
background: rgb(233, 170, 188) }
```

If only the background color should be changed can be used:

```
.background{ background-color: rgb(233,  
170, 188) }
```

This example shows the color as background, it is applied via the CSS property "background".

To optimize and compress your CSS code, you can use our [online CSS compressor and optimizer](#) based on csstidy. If you want to create a linear or radial gradient as background or border, check our [CSS Gradient Generator](#).

Hey! You found this booklet interesting? Support Converting Colors with the new Membership Option!

The pro membership hides all ads, plus gives you double the colors in the color bucket, and more awesome pro features!

[Learn more, Memberships starting at \\$2.50/m!](#)

**Follow me
on Twitter!**

@ConvertingColor