

Converting Colors

YUV(191.1530, -15.3584,
26.1758)

Have a look what the booklet for
YUV(191.1530, -15.3584, 26.1758)
contains.

YUV(191.1530, -15.3584, 26.1758)	3
<i>Conversions</i>	4
<i>Details</i>	6
<i>Harmonies</i>	12
<i>Previews</i>	24
<i>Color Blindness Simulation</i>	28
<i>CSS Examples</i>	31

Color

**YUV(191.1530, -15.3584,
26.1758)**

Conversions

Conversions Part 1

Format	Color
Hex	DDB6A0
RGB	221, 182, 160
RGB Percent	87%, 71%, 63%
CMY	0.1333, 0.2863, 0.3725
CMYK	0.00, 0.18, 0.28, 0.13
HSL	22°, 47%, 75%
HSV	22°, 28%, 87%
XYZ	52.8919, 51.3661, 40.3847
YIQ	191.1530, 30.3060, 1.4260

Conversions

Conversions Part 2

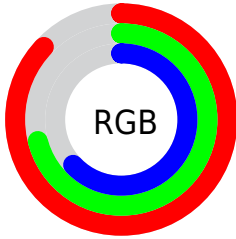
Format	Color
R_{YB}	221, 194, 160
Decimal	14530208
CIE Lab	76.90, 10.83, 16.48
CIE LCh	77, 19.717, 56.678
Yxy	51.3661, 0.3657, 0.3551
Android (android.graphics.Color)	4292720288 (0xFFDDB6A0)
YUV	191.1530, -15.3584, 26.1758
Hunter-Lab	71.6702, 6.3086, 16.7604

Details

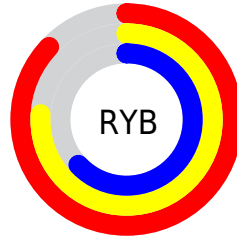
The YUV color $191.1530, -15.3584, 26.1758$ is a light color, and the websafe version is hex $CC9999$. A complement of this color would be $189.8470, 15.3584, -26.1758$, and the grayscale version is $191.0000, 0.0000, 0.0000$.

A 20% lighter version of the original color is $240.4610, -12.5523, 12.7507$, and $137.3700, -14.4794, 24.2315$ is the 20% darker color. If you saturate the color by 10%, you get $180.4270, -20.9165, 35.5825$, and if you desaturate by 10%, it is $201.8790, -9.8003, 16.7691$.

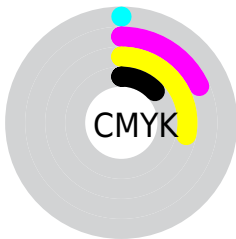
Distribution



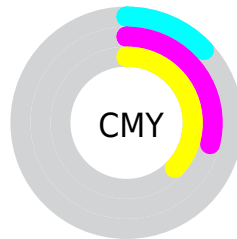
- Red (87%)
- Green (71%)
- Blue (63%)



- Red (87%)
- Yellow (76%)
- Blue (63%)



- Cyan (0%)
- Magenta (18%)
- Yellow (28%)
- Black (13%)



- Cyan (13%)
- Magenta (29%)
- Yellow (37%)

Brightness & Saturation Gradients

These gradients show how the YUV color 191.1530, -15.3584, 26.1758 changes by changing the brightness by 10 percent. The first figure shows a shift by +10% for each color and the second figure -10%.

Similar to the brightness gradients but the following saturation gradients show a change of the YUV color 191.1530, -15.3584, 26.1758 by changing the saturation by 10% instead.

■ 191.1530,
-15.3584, 26.1758

■ 191.1530,
-15.3584, 26.1758

255.0000, 0.0000,
0.0000

■ 163.9680,
-14.7742, 25.4611

■ 240.4610,
-12.5523, 12.7507

■ 137.3700,
-14.4794, 24.2315

■ 253.6320, -5.2416,
1.1997

■ 111.8860,
-13.7478, 22.9020

■ 87.4020, -13.0162,
21.5724

■ 63.6190, -12.1372,
19.6281

■ 41.1350, -11.4056,
18.2986

■ 20.4660, -10.0897,

16.2543

■ 0.0000, 0.0000,
0.0000

■ 191.1530,
-15.3584, 26.1758

■ 191.1530,
-15.3584, 26.1758

■ 180.4270,
-20.9165, 35.5825

■ 201.8790, -9.8003,
16.7691

■ 169.7010,
-26.4746, 44.9892

■ 212.6050, -4.2423,
7.3624

■ 158.9750,
-32.0327, 54.3959

■ 223.3310, 1.3158,
-2.0443

■ 147.6620,
-37.3014, 64.3174

■ 234.6440, 6.5845,
-11.9658

■ 136.9360,
-42.8594, 73.7241

■ 243.6600, 5.5906,
-19.8728

■ 126.0960,
-48.8543, 83.2308

■ 244.8340, 5.0118,
-20.9024

■ 115.3700,
-54.4124, 92.6375

■ 113.0390,
-55.7282, 94.6818

Harmonies

Analogous

The Analogous color harmony consists of three colors that are next to each other on the color wheel.



192.4940, -9.1175, 31.1388



191.1530, -15.3584, 26.1758



189.5060, -17.5045, 14.4652

Triad

The Triadic color harmony groups three colors that are evenly spaced from another and form a triangle on the color wheel.



191.1530, -15.3584, 26.1758



182.9700, 1.9868, -30.6687



191.5990, 14.9877, -0.5253

Complementary

The Complementary color scheme is a pair of colors which are on the opposite of each other on the color wheel.



191.1530, -15.3584, 26.1758



189.8470, 15.3584, -26.1758

Split Complementary

Split-complementary colors differ from the complementary color scheme. The scheme consists of three colors, the original color and two neighbors of the complement color.



188.4010, 18.5363, -18.7687



191.1530, -15.3584, 26.1758



182.9290, 10.8810, -36.7717

Square

The Square scheme is like the rectangle color scheme, but the four colors are evenly spaced on the color wheel.



191.1530, -15.3584, 26.1758



185.1260, -7.9501, -16.7735



184.6720, 17.4167, -33.0383



192.9880, 8.3869, 16.6735

Rectangle

The Rectangle color scheme consists of four colors that form a rectangle on the color wheel.



191.1530, -15.3584, 26.1758



188.0810, -16.3089, 4.3140



184.6720, 17.4167, -33.0383



190.7230, 16.8986, -6.7731

Sweetspot

The Sweet Spot groups the original color and five complimentary colors.



191.1530, -15.3584, 26.1758



245.0890, -4.9739, 8.6919



182.7990, 8.4801, 33.5023



121.2350, -3.0739, 5.9329



0.0000, 0.0000, 0.0000



128.0000, 0.0000, 0.0000

Same Dimension

The Same Dimension uses a secret algorithm to generate beautiful new colors.



191.1530, -15.3584, 26.1758



213.7260, -21.0639, 36.1973



208.7630, -24.0402, 10.7318



104.6370, -2.7790, 4.7034



88.7080, -43.7330, 73.9241



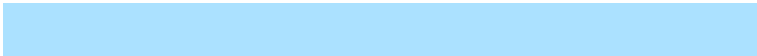
23.7330, -11.7004, 19.5282

Inverse Universe

The Inverse Universe completely reimagines the original color for something new.



189.8470, 15.3584, -26.1758



212.2740, 21.0639, -36.1973



172.2370, 24.0402, -10.7318



104.3630, 2.7790, -4.7034



84.8790, 43.4437, -74.4389



22.2670, 11.7004, -19.5282

Previews

White Background



This preview shows how the YUV color 191.1530, -15.3584, 26.1758 looks on a white background.

Color Contrast Check

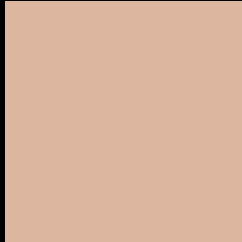
Large Text (above 18pt) WCAG AA × Fail

Any Text WCAG AA × Fail

Large Text (above 18pt) WCAG AAA × Fail

Any Text WCAG AAA × Fail

Black Background



This preview shows how the YUV color 191.1530, -15.3584, 26.1758 looks on a black background.

Color Contrast Check

Large Text (above 18pt) WCAG AA ✓ Pass

Any Text WCAG AA ✓ Pass

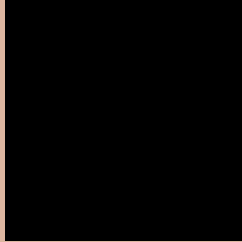
Large Text (above 18pt) WCAG AAA ✓ Pass

Any Text WCAG AAA ✓ Pass

If you want to check with other color combinations, try the [Color Contrast Checker](#).

YUV 191.1530, -15.3584, 26.1758

Background



This preview shows how black text looks on a background with the YUV color 191.1530, -15.3584, 26.1758.



This preview shows how white text looks on a background with the YUV color 191.1530, -15.3584,

Color Blindness Simulation

Color vision deficiency is a very complex topic, and I could not describe the different causes any better than Wikipedia does, so if you want to learn more, you should check out their [article about color blindness](#).

Dichromacy



Original Color

191.1530, -15.3584, 26.1758

Protanopia

189.7270, -12.6834, 8.1324

Deuteranopia

191.1420, -15.3530, 24.4315



Tritanopia

192.9480, -0.9604, 28.1096

Trichromacy



Original Color

191.1530, -15.3584, 26.1758

Protanomaly

190.2440, -13.4313, 14.6950

Deuteranomaly

191.4410, -15.5004, 25.0462

Tritanomaly

192.5690, -6.1965, 27.5650

Monochromacy



Original Color

191.1530, -15.3584, 26.1758

Achromatopsia

191.0000, 0.0000, 0.0000

Achromatomaly

191.2740, -5.5581, 9.4067

CSS Examples

Text

The CSS property to change the color of the text to YUV 191.1530, -15.3584, 26.1758 is called "color". The color property can be set on classes, ids or directly on the HTML element.

This example shows how text in the color `rgb(221, 182, 160)` looks like.

```
.text, #text, p{  
    color:rgb(221, 182, 160)  
}
```

If you want to add a text shadow in that color use the text-shadow property, you can generate a text shadow directly with our [CSS Text Shadow Generator](#).

Here you see how black text with a 4 pixel rgb(221, 182, 160) colored shadow looks like.

```
.shadow{ text-shadow: 4px 4px 2px rgb(221, 182, 160) }
```

Border

The CSS property to change the border of an element to YUV 191.1530, -15.3584, 26.1758 is called "border".

The border property can be set on classes, ids or directly on the HTML element.

This example shows the color as border, it can be applied via the CSS property "border" or "border-color".

```
.border, #border, table{ border:4px solid rgb(221, 182, 160) }
```


If only the border color should be changed use the property border-color.

```
.border{ border-color:rgb(221, 182, 160) }
```

If you want to add a box shadow in that color use:

Here you see how a box with a 4 pixel rgb(221, 182, 160) colored shadow looks like.

```
.boxshadow{ -moz-box-shadow:4px 4px 4px  
4px rgb(221, 182, 160); -webkit-box-  
shadow:4px 4px 4px 4px rgb(221, 182, 160);  
box-shadow:4px 4px 4px 4px rgb(221, 182,  
160) }
```

Background

The CSS property to change the background color of an element to YUV 191.1530, -15.3584, 26.1758 is called "background". The background property can be set on classes, ids or directly on the HTML element.

```
.background, #background, body{  
background: rgb(221, 182, 160) }
```

If only the background color should be changed can be used:

```
.background{ background-color: rgb(221,  
182, 160) }
```

This example shows the color as background, it is applied via the CSS property "background".

To optimize and compress your CSS code, you can use our [online CSS compressor and optimizer](#) based on csstidy. If you want to create a linear or radial gradient as background or border, check our [CSS Gradient Generator](#).

Hey! You found this booklet interesting? Support Converting Colors with the new Membership Option!

The pro membership hides all ads, plus gives you double the colors in the color bucket, and more awesome pro features!

[Learn more, Memberships starting at \\$2.50/m!](#)

**Follow me
on Twitter!**

@ConvertingColor