

Converting Colors

YUV(191.2160, -10.9525,
12.9656)

Have a look what the booklet for
YUV(191.2160, -10.9525, 12.9656)
contains.

YUV(191.2160, -10.9525, 12.9656)	3
<i>Conversions</i>	4
<i>Details</i>	6
<i>Harmonies</i>	12
<i>Previews</i>	24
<i>Color Blindness Simulation</i>	28
<i>CSS Examples</i>	31

Color

**YUV(191.2160, -10.9525,
12.9656)**

Conversions

Conversions Part 1

Format	Color
Hex	CEBCA9
RGB	206, 188, 169
RGB Percent	81%, 74%, 66%
CMY	0.1922, 0.2627, 0.3373
CMYK	0.00, 0.09, 0.18, 0.19
HSL	31°, 27%, 74%
HSV	31°, 18%, 81%
XYZ	50.5983, 51.9528, 44.8972
YIQ	191.2160, 16.8270, -2.0930

Conversions

Conversions Part 2

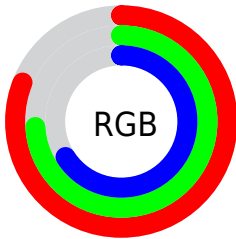
Format	Color
R_{YB}	204, 206, 169
Decimal	13548713
CIE _{Lab}	77.25, 3.28, 11.92
CIE _{LCh}	77, 12.362, 74.614
Yxy	51.9528, 0.3432, 0.3523
Android (android.graphics.Color)	4291738793 (0xFFCEBCA9)
YUV	191.2160, -10.9525, 12.9656
Hunter-Lab	72.0783, -0.8318, 13.5234

Details

The YUV color $191.2160, -10.9525, 12.9656$ is a light color, and the websafe version is hex `CCCCCC`. A complement of this color would be $183.7840, 10.9525, -12.9656$, and the grayscale version is $191.0000, 0.0000, 0.0000$.

A 20% lighter version of the original color is $245.0090, -10.3574, 8.7621$, and $137.7320, -10.2209, 11.6360$ is the 20% darker color. If you saturate the color by 10%, you get $182.9520, -17.2313, 20.2131$, and if you desaturate by 10%, it is $199.4800, -4.6736, 5.7180$.

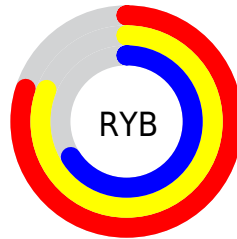
Distribution



Red (81%)

Green (74%)

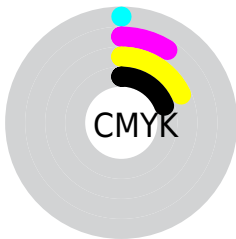
Blue (66%)



Red (80%)

Yellow (81%)

Blue (66%)

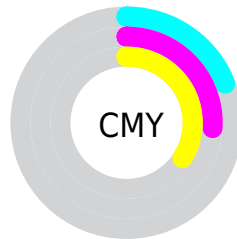


Cyan (0%)

Magenta (9%)

Yellow (18%)

Black (19%)



Cyan (19%)

Magenta (26%)

Yellow (34%)

Brightness & Saturation Gradients

These gradients show how the YUV color 191.2160, -10.9525, 12.9656 changes by changing the brightness by 10 percent. The first figure shows a shift by +10% for each color and the second figure -10%.

Similar to the brightness gradients but the following saturation gradients show a change of the YUV color 191.2160, -10.9525, 12.9656 by changing the saturation by 10% instead.

■ 191.2160,
-10.9525, 12.9656

■ 191.2160,
-10.9525, 12.9656

255.0000, 0.0000,
0.0000

■ 164.0310,
-10.3683, 12.2508

■ 245.0090,
-10.3574, 8.7621

■ 137.7320,
-10.2209, 11.6360

254.7720, -0.8736,
0.2000

■ 112.4330,
-10.0735, 11.0213

■ 87.6610, -9.1999,
10.8213

■ 64.3620, -9.0525,
10.2065

■ 42.1770, -8.4683,
9.4918

■ 21.3080, -10.5048,

9.3769

0.0000, 0.0000,
0.0000

191.2160,
-10.9525, 12.9656

191.2160,
-10.9525, 12.9656

182.9520,
-17.2313, 20.2131

199.4800, -4.6736,
5.7180

174.8020,
-23.0734, 27.3606

207.6300, 1.1684,
-1.4295

166.5380,
-29.3522, 34.6082

215.8940, 7.4473,
-8.6770

158.3880,
-35.1943, 41.7557

224.0440, 13.2893,
-15.8246

150.1240,
-41.4731, 49.0033

230.3700, 12.1426,
-21.3725

■ 141.8600,
-47.7520, 56.2508

■ 236.2400, 9.2487,
-26.5205

■ 133.7100,
-53.5940, 63.3983

■ 240.3490, 7.2229,
-30.1241

■ 125.4460,
-59.8729, 70.6459

■ 123.8160,
-61.0413, 72.0754

Harmonies

Analogous

The Analogous color harmony consists of three colors that are next to each other on the color wheel.



192.5310, -8.6428, 18.8283



191.2160, -10.9525, 12.9656



189.9760, -10.3412, 3.5290

Triad

The Triadic color harmony groups three colors that are evenly spaced from another and form a triangle on the color wheel.



191.2160, -10.9525, 12.9656



187.3070, 4.2856, -21.3172



192.5800, 7.1091, 6.5073

Complementary

The Complementary color scheme is a pair of colors which are on the opposite of each other on the color wheel.



191.2160, -10.9525, 12.9656



183.7840, 10.9525, -12.9656

Split Complementary

Split-complementary colors differ from the complementary color scheme. The scheme consists of three colors, the original color and two neighbors of the complement color.



191.4260, 10.6360, -4.7586



191.2160, -10.9525, 12.9656



187.2730, 9.2324, -21.2874

Square

The Square scheme is like the rectangle color scheme, but the four colors are evenly spaced on the color wheel.



191.2160, -10.9525, 12.9656



187.1460, -1.5510, -15.9140



189.4740, 11.1053, -15.3247



193.5550, 1.6984, 15.2993

Rectangle

The Rectangle color scheme consists of four colors that form a rectangle on the color wheel.



191.2160, -10.9525, 12.9656



188.8010, -8.2829, -3.3335



189.4740, 11.1053, -15.3247



192.0140, 8.8671, 2.6187

Sweetspot

The Sweet Spot groups the original color and five complimentary colors.



191.2160, -10.9525, 12.9656



249.9960, -3.9420, 4.3885



182.1150, 2.4083, 20.9471



124.7400, -2.3368, 2.8590



0.0000, 0.0000, 0.0000



128.0000, 0.0000, 0.0000

Same Dimension

The Same Dimension uses a secret algorithm to generate beautiful new colors.



191.2160, -10.9525, 12.9656



232.7670, -16.6471, 19.4983



201.7820, -16.1615, 3.6992



97.9250, -2.9210, 3.5738



99.5290, -49.0678, 58.2951



23.1020, -11.3893, 13.0655

Inverse Universe

The Inverse Universe completely reimagines the original color for something new.



183.7840, 10.9525, -12.9656



221.2330, 16.6471, -19.4983



173.2180, 16.1615, -3.6992



96.0750, 2.9210, -3.5738



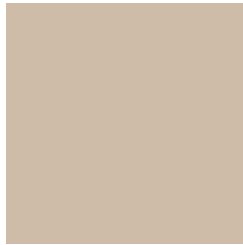
66.4710, 49.0678, -58.2951



15.4850, 11.0999, -13.5803

Previews

White Background



This preview shows how the YUV color 191.2160, -10.9525, 12.9656 looks on a white background.

Color Contrast Check

Large Text (above 18pt) WCAG AA × Fail

Any Text WCAG AA × Fail

Large Text (above 18pt) WCAG AAA × Fail

Any Text WCAG AAA × Fail

Black Background



This preview shows how the YUV color 191.2160, -10.9525, 12.9656 looks on a black background.

Color Contrast Check

Large Text (above 18pt) WCAG AA ✓ Pass

Any Text WCAG AA ✓ Pass

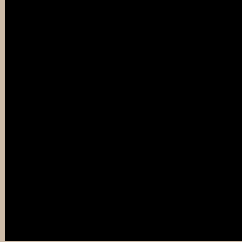
Large Text (above 18pt) WCAG AAA ✓ Pass

Any Text WCAG AAA ✓ Pass

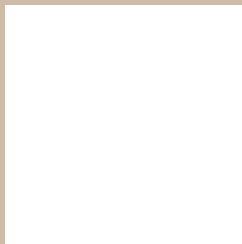
If you want to check with other color combinations, try the [Color Contrast Checker](#).

YUV 191.2160, -10.9525, 12.9656

Background



This preview shows how black text looks on a background with the YUV color 191.2160, -10.9525, 12.9656.



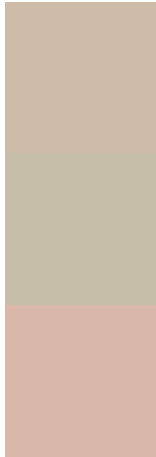
This preview shows how white text looks on a background with the YUV color 191.2160, -10.9525, 12.9656.

12.9656.

Color Blindness Simulation

Color vision deficiency is a very complex topic, and I could not describe the different causes any better than Wikipedia does, so if you want to learn more, you should check out their [article about color blindness](#).

Dichromacy



Original Color

191.2160, -10.9525, 12.9656

Protanopia

190.4110, -10.0626, 7.5326

Deuteranopia

192.2710, -10.9796, 21.6873



Tritanopia

193.3700, 2.2826, 14.5845

Trichromacy



Original Color

191.2160, -10.9525, 12.9656

Protanomaly

190.7210, -10.2155, 9.8917

Deuteranomaly

191.6620, -10.6794, 18.7134

Tritanomaly

192.4040, -2.6642, 14.5547

Monochromacy



Original Color

191.2160, -10.9525, 12.9656

Achromatopsia

191.0000, 0.0000, 0.0000

Achromatomaly

190.9960, -3.9420, 4.3885

CSS Examples

Text

The CSS property to change the color of the text to YUV 191.2160, -10.9525, 12.9656 is called "color". The color property can be set on classes, ids or directly on the HTML element.

This example shows how text in the color `rgb(206, 188, 169)` looks like.

```
.text, #text, p{  
    color:rgb(206, 188, 169)  
}
```

If you want to add a text shadow in that color use the text-shadow property, you can generate a text shadow directly with our [CSS Text Shadow Generator](#).

Here you see how black text with a 4 pixel rgb(206, 188, 169) colored shadow looks like.

```
.shadow{ text-shadow: 4px 4px 2px rgb(206, 188, 169) }
```

Border

The CSS property to change the border of an element to YUV 191.2160, -10.9525, 12.9656 is called "border".

The border property can be set on classes, ids or directly on the HTML element.

This example shows the color as border, it can be applied via the CSS property "border" or "border-color".

```
.border, #border, table{ border:4px solid rgb(206, 188, 169) }
```


If only the border color should be changed use the property `border-color`.

```
.border{ border-color:rgb(206, 188, 169) }
```

If you want to add a box shadow in that color use:

Here you see how a box with a 4 pixel `rgb(206, 188, 169)` colored shadow looks like.

```
.boxshadow{ -moz-box-shadow:4px 4px 4px  
4px rgb(206, 188, 169); -webkit-box-  
shadow:4px 4px 4px 4px rgb(206, 188, 169);  
box-shadow:4px 4px 4px 4px rgb(206, 188,  
169) }
```

Background

The CSS property to change the background color of an element to YUV 191.2160, -10.9525, 12.9656 is called "background". The background property can be set on classes, ids or directly on the HTML element.

```
.background, #background, body{  
background: rgb(206, 188, 169) }
```

If only the background color should be changed can be used:

```
.background{ background-color: rgb(206,  
188, 169) }
```

This example shows the color as background, it is applied via the CSS property "background".

To optimize and compress your CSS code, you can use our [online CSS compressor and optimizer](#) based on csstidy. If you want to create a linear or radial gradient as background or border, check our [CSS Gradient Generator](#).

Hey! You found this booklet interesting? Support Converting Colors with the new Membership Option!

The pro membership hides all ads, plus gives you double the colors in the color bucket, and more awesome pro features!

[Learn more, Memberships starting at \\$2.50/m!](#)

**Follow me
on Twitter!**

@ConvertingColor