

Converting Colors

YUV(191.5210, -10.1169,
24.9761)

Have a look what the booklet for
YUV(191.5210, -10.1169, 24.9761)
contains.

YUV(191.5210, -10.1169, 24.9761)	3
<i>Conversions</i>	4
<i>Details</i>	6
<i>Harmonies</i>	12
<i>Previews</i>	24
<i>Color Blindness Simulation</i>	28
<i>CSS Examples</i>	31

Color

**YUV(191.5210, -10.1169,
24.9761)**

Conversions

Conversions Part 1

Format	Color
Hex	DCB5AB
RGB	220, 181, 171
RGB Percent	86%, 71%, 67%
CMY	0.1373, 0.2902, 0.3294
CMYK	0.00, 0.18, 0.22, 0.14
HSL	12°, 41%, 77%
HSV	12°, 22%, 86%
XYZ	53.3898, 51.2037, 45.5974
YIQ	191.5210, 26.4540, 5.1580

Conversions

Conversions Part 2

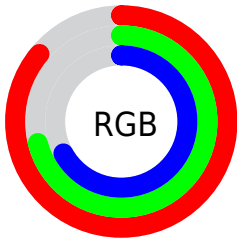
Format	Color
R _Y B	220, 184, 171
Decimal	14464427
CIE Lab	76.80, 12.54, 10.37
CIE LCh	77, 16.274, 39.594
Yxy	51.2037, 0.3555, 0.3409
Android (android.graphics.Color)	4292654507 (0xFFDCB5AB)
YUV	191.5210, -10.1169, 24.9761
Hunter-Lab	71.5567, 7.9578, 12.3089

Details

The YUV color $191.5210, -10.1169, 24.9761$ is a light color, and the websafe version is hex $CC9999$. A complement of this color would be $199.4790, 10.1169, -24.9761$, and the grayscale version is $192.0000, 0.0000, 0.0000$.

A 20% lighter version of the original color is $241.1280, -7.4581, 12.1657$, and $137.7380, -9.2378, 23.0318$ is the 20% darker color. If you saturate the color by 10%, you get $178.4470, -14.5174, 36.4420$, and if you desaturate by 10%, it is $204.5950, -5.7163, 13.5102$.

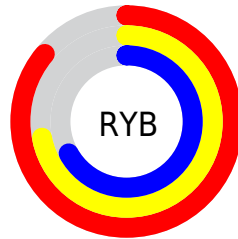
Distribution



Red (86%)

Green (71%)

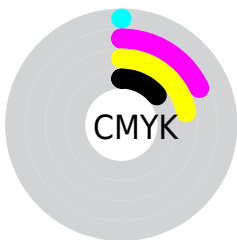
Blue (67%)



Red (86%)

Yellow (72%)

Blue (67%)

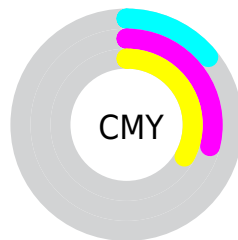


Cyan (0%)

Magenta (18%)

Yellow (22%)

Black (14%)



Cyan (14%)

Magenta (29%)

Yellow (33%)

Brightness & Saturation Gradients

These gradients show how the YUV color 191.5210, -10.1169, 24.9761 changes by changing the brightness by 10 percent. The first figure shows a shift by +10% for each color and the second figure -10%.

Similar to the brightness gradients but the following saturation gradients show a change of the YUV color 191.5210, -10.1169, 24.9761 by changing the saturation by 10% instead.

■ 191.5210,
-10.1169, 24.9761

■ 191.5210,
-10.1169, 24.9761

255.0000, 0.0000,
0.0000

■ 164.2220, -9.9694,
24.3613

■ 241.1280, -7.4581,
12.1657

■ 137.7380, -9.2378,
23.0318

■ 112.4390, -9.0904,
22.4170

■ 87.9550, -8.3588,
21.0875

■ 64.0580, -7.9166,
19.2431

■ 41.5740, -7.1850,
17.9136

■ 19.5910, -9.6584,

17.8987

■ 0.0000, 0.0000,
0.0000

■ 191.5210,
-10.1169, 24.9761

■ 191.5210,
-10.1169, 24.9761

■ 178.4470,
-14.5174, 36.4420

■ 204.5950, -5.7163,
13.5102

■ 165.9600,
-19.2073, 47.3931

■ 217.0820, -1.0264,
2.5591

■ 152.8860,
-23.6078, 58.8590

■ 230.1560, 3.3741,
-8.9068

■ 140.3990,
-28.2977, 69.8101

■ 242.1870, 6.3168,
-19.4580

■ 127.3250,
-32.6982, 81.2760

■ 244.5350, 5.1592,
-21.5172

■ 114.8380,
-37.3881, 92.2271

■ 101.7640,
-41.7887, 103.6930

■ 92.1950, -45.4521,
112.0850

Harmonies

Analogous

The Analogous color harmony consists of three colors that are next to each other on the color wheel.



192.2420, -3.5703, 25.2208



191.5210, -10.1169, 24.9761



190.1520, -13.8789, 18.2837

Triad

The Triadic color harmony groups three colors that are evenly spaced from another and form a triangle on the color wheel.



191.5210, -10.1169, 24.9761



185.3690, -3.1399, -19.6176



189.4300, 14.5780, -9.1471

Complementary

The Complementary color scheme is a pair of colors which are on the opposite of each other on the color wheel.



191.5210, -10.1169, 24.9761



199.4790, 10.1169, -24.9761

Split Complementary

Split-complementary colors differ from the complementary color scheme. The scheme consists of three colors, the original color and two neighbors of the complement color.



186.7550, 14.9108, -22.5871



191.5210, -10.1169, 24.9761



183.7900, 5.0335, -27.8798

Square

The Square scheme is like the rectangle color scheme, but the four colors are evenly spaced on the color wheel.



191.5210, -10.1169, 24.9761



186.9100, -10.3086, -6.9371



184.5000, 11.5855, -29.3795



191.4920, 10.6034, 5.7075

Rectangle

The Rectangle color scheme consists of four colors that form a rectangle on the color wheel.



191.5210, -10.1169, 24.9761



188.9940, -14.2940, 11.4063



184.5000, 11.5855, -29.3795



188.8100, 14.8837, -13.8654

Sweetspot

The Sweet Spot groups the original color and five complimentary colors.



191.5210, -10.1169, 24.9761



244.7300, -3.8109, 9.0068



190.0970, 9.8122, 26.2249



121.4630, -2.2003, 5.7329



0.0000, 0.0000, 0.0000



128.0000, 0.0000, 0.0000

Same Dimension

The Same Dimension uses a secret algorithm to generate beautiful new colors.



191.5210, -10.1169, 24.9761



214.8490, -14.2226, 35.2124



205.6090, -17.0622, 12.6209



103.4630, -2.2003, 5.7329



72.2720, -35.6301, 88.3385



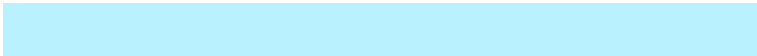
19.0370, -9.3852, 23.6466

Inverse Universe

The Inverse Universe completely reimagines the original color for something new.



199.4790, 10.1169, -24.9761



226.1510, 14.2226, -35.2124



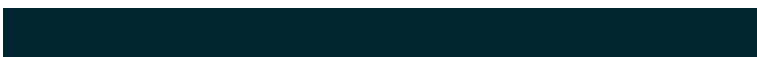
185.3910, 17.0622, -12.6209



104.9500, 2.4896, -5.2182



100.7280, 35.6301, -88.3385



26.9630, 9.3852, -23.6466

Previews

White Background



This preview shows how the YUV color 191.5210, -10.1169, 24.9761 looks on a white background.

Color Contrast Check

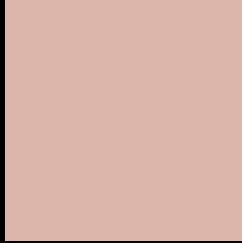
Large Text (above 18pt) WCAG AA × Fail

Any Text WCAG AA × Fail

Large Text (above 18pt) WCAG AAA × Fail

Any Text WCAG AAA × Fail

Black Background



This preview shows how the YUV color 191.5210, -10.1169, 24.9761 looks on a black background.

Color Contrast Check

Large Text (above 18pt) WCAG AA ✓ Pass

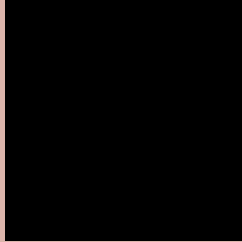
Any Text WCAG AA ✓ Pass

Large Text (above 18pt) WCAG AAA ✓ Pass

Any Text WCAG AAA ✓ Pass

If you want to check with other color combinations, try the [Color Contrast Checker](#).

YUV 191.5210, -10.1169, 24.9761 Background



This preview shows how black text looks on a background with the YUV color 191.5210, -10.1169, 24.9761.



This preview shows how white text looks on a background with the YUV color 191.5210, -10.1169,

24.9761.

Color Blindness Simulation

Color vision deficiency is a very complex topic, and I could not describe the different causes any better than Wikipedia does, so if you want to learn more, you should check out their [article about color blindness](#).

Dichromacy



Original Color

191.5210, -10.1169, 24.9761

Protanopia

189.7960, -7.2944, 6.3179

Deuteranopia

191.2000, -9.9586, 20.8726



Tritanopia

192.7520, -0.3707, 25.6505

Trichromacy



Original Color

191.5210, -10.1169, 24.9761

Protanomaly

190.3130, -8.0423, 12.8805

Deuteranomaly

191.2110, -9.9640, 22.6170

Tritanomaly

192.1280, -4.0071, 25.3207

Monochromacy



Original Color

191.5210, -10.1169, 24.9761

Achromatopsia

192.0000, 0.0000, 0.0000

Achromatomaly

191.7300, -3.8109, 9.0068

CSS Examples

Text

The CSS property to change the color of the text to YUV 191.5210, -10.1169, 24.9761 is called "color". The color property can be set on classes, ids or directly on the HTML element.

This example shows how text in the color `rgb(220, 181, 171)` looks like.

```
.text, #text, p{  
    color:rgb(220, 181, 171)  
}
```

If you want to add a text shadow in that color use the text-shadow property, you can generate a text shadow directly with our [CSS Text Shadow Generator](#).

Here you see how black text with a 4 pixel rgb(220, 181, 171) colored shadow looks like.

```
.shadow{ text-shadow: 4px 4px 2px rgb(220, 181, 171) }
```

Border

The CSS property to change the border of an element to YUV 191.5210, -10.1169, 24.9761 is called "border".

The border property can be set on classes, ids or directly on the HTML element.

This example shows the color as border, it can be applied via the CSS property "border" or "border-color".

```
.border, #border, table{ border:4px solid rgb(220, 181, 171) }
```


If only the border color should be changed use the property `border-color`.

```
.border{ border-color:rgb(220, 181, 171) }
```

If you want to add a box shadow in that color use:

Here you see how a box with a 4 pixel `rgb(220, 181, 171)` colored shadow looks like.

```
.boxshadow{ -moz-box-shadow:4px 4px 4px 4px rgb(220, 181, 171); -webkit-box-shadow:4px 4px 4px 4px rgb(220, 181, 171); box-shadow:4px 4px 4px 4px rgb(220, 181, 171) }
```

Background

The CSS property to change the background color of an element to YUV 191.5210, -10.1169, 24.9761 is called "background". The background property can be set on classes, ids or directly on the HTML element.

```
.background, #background, body{  
background: rgb(220, 181, 171) }
```

If only the background color should be changed can be used:

```
.background{ background-color: rgb(220,  
181, 171) }
```

This example shows the color as background, it is applied via the CSS property "background".

To optimize and compress your CSS code, you can use our [online CSS compressor and optimizer](#) based on csstidy. If you want to create a linear or radial gradient as background or border, check our [CSS Gradient Generator](#).

Hey! You found this booklet interesting? Support Converting Colors with the new Membership Option!

The pro membership hides all ads, plus gives you double the colors in the color bucket, and more awesome pro features!

[Learn more, Memberships starting at \\$2.50/m!](#)

**Follow me
on Twitter!**

@ConvertingColor