

# Converting Colors

YUV(191.6050, -17.5533,  
30.1644)

Have a look what the booklet for  
YUV(191.6050, -17.5533, 30.1644)  
contains.

<b>YUV(191.6050, -17.5533, 30.1644)</b> .....	3
<b><i>Conversions</i></b> .....	4
<b><i>Details</i></b> .....	6
<b><i>Harmonies</i></b> .....	12
<b><i>Previews</i></b> .....	24
<b><i>Color Blindness Simulation</i></b> .....	28
<b><i>CSS Examples</i></b> .....	31

# Color

**YUV(191.6050, -17.5533,  
30.1644)**

# Conversions

## Conversions Part 1

Format	Color
Hex	E2B59C
RGB	226, 181, 156
RGB Percent	89%, 71%, 61%
CMY	0.1137, 0.2902, 0.3882
CMYK	0.00, 0.20, 0.31, 0.11
HSL	21°, 55%, 75%
HSV	21°, 31%, 89%
XYZ	53.8887, 51.6168, 38.5753
YIQ	191.6050, 34.8450, 1.7650

# Conversions

## Conversions Part 2

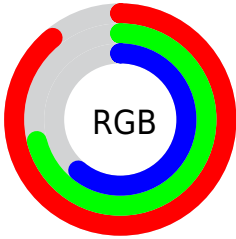
Format	Color
R <sub>Y</sub> B	226, 195, 156
Decimal	14857628
CIE Lab	77.05, 12.75, 18.91
CIE LCh	77, 22.810, 56.020
Yxy	51.6168, 0.3740, 0.3582
Android (android.graphics.Color)	4293047708 (0xFFE2B59C)
YUV	191.6050, -17.5533, 30.1644
Hunter-Lab	71.8448, 8.1590, 18.4571

# Details

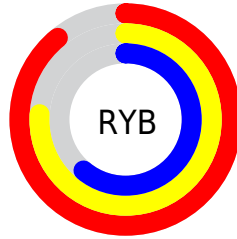
The YUV color **191.6050, -17.5533, 30.1644** is a light color, and the websafe version is hex **FFCC99**. A complement of this color would be **190.3950, 17.5533, -30.1644**, and the grayscale version is **192.0000, 0.0000, 0.0000**.

A 20% lighter version of the original color is **239.4180, -14.0101, 13.6654**, and **137.9360, -16.2374, 28.1201** is the 20% darker color. If you saturate the color by 10%, you get **180.1780, -23.2588, 40.1859**, and if you desaturate by 10%, it is **203.0320, -11.8478, 20.1429**.

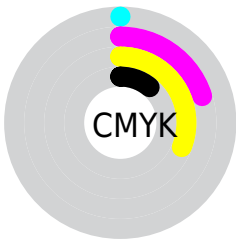
# Distribution



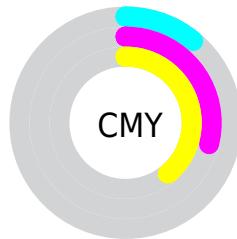
- Red (89%)
- Green (71%)
- Blue (61%)



- Red (89%)
- Yellow (76%)
- Blue (61%)



- Cyan (0%)
- Magenta (20%)
- Yellow (31%)
- Black (11%)



- Cyan (11%)
- Magenta (29%)
- Yellow (39%)

# Brightness & Saturation Gradients

These gradients show how the YUV color 191.6050, -17.5533, 30.1644 changes by changing the brightness by 10 percent. The first figure shows a shift by +10% for each color and the second figure -10%.

Similar to the brightness gradients but the following saturation gradients show a change of the YUV color 191.6050, -17.5533, 30.1644 by changing the saturation by 10% instead.



■ 191.6050,  
-17.5533, 30.1644

■ 191.6050,  
-17.5533, 30.1644

255.0000, 0.0000,  
0.0000

■ 164.1210,  
-16.8217, 28.8349

■ 239.4180,  
-14.0101, 13.6654

■ 137.9360,  
-16.2374, 28.1201

■ 253.1760, -6.9888,  
1.5996

■ 112.0390,  
-15.7952, 26.2758

■ 87.5550, -15.0636,  
24.9463

■ 63.7720, -14.1846,  
23.0020

■ 41.1030, -12.8688,  
20.9577

■ 20.7760, -10.2426,

18.6134

■ 0.0000, 0.0000,  
0.0000

■ 191.6050,  
-17.5533, 30.1644

■ 191.6050,  
-17.5533, 30.1644

■ 180.1780,  
-23.2588, 40.1859

■ 203.0320,  
-11.8478, 20.1429

■ 169.4520,  
-28.8168, 49.5926

■ 213.7580, -6.2897,  
10.7362

■ 158.0250,  
-34.5223, 59.6141

■ 225.1850, -0.5842,  
0.7148

■ 147.2990,  
-40.0804, 69.0208

■ 235.9110, 4.9739,  
-8.6919

■ 135.8720,  
-45.7859, 79.0423

■ 245.7420, 4.5642,  
-17.3137

■ 125.0320,  
-51.7808, 88.5489

■ 246.3290, 4.2748,  
-17.8285

■ 115.1210,  
-56.7547, 97.2409

# Harmonies

## Analogous

The Analogous color harmony consists of three colors that are next to each other on the color wheel.



193.0000, -9.8600, 35.9570



191.6050, -17.5533, 30.1644



189.7190, -20.5675, 16.9094

# Triad

The Triadic color harmony groups three colors that are evenly spaced from another and form a triangle on the color wheel.



191.6050, -17.5533, 30.1644



182.3500, 2.2925, -35.3869



191.9840, 17.7559, -1.7400

# Complementary

The Complementary color scheme is a pair of colors which are on the opposite of each other on the color wheel.



191.6050, -17.5533, 30.1644



190.3950, 17.5533, -30.1644

# Split Complementary

Split-complementary colors differ from the complementary color scheme. The scheme consists of three colors, the original color and two neighbors of the complement color.



188.1770, 21.6047, -22.9572



191.6050, -17.5533, 30.1644



181.7540, 12.9393, -43.6343

# Square

The Square scheme is like the rectangle color scheme, but the four colors are evenly spaced on the color wheel.



191.6050, -17.5533, 30.1644



184.7620, -9.2497, -19.9623



184.0240, 20.2012, -39.4860



193.7540, 9.9813, 18.6327



# Rectangle

The Rectangle color scheme consists of four colors that form a rectangle on the color wheel.



191.6050, -17.5533, 30.1644



187.8100, -18.6403, 5.4286



184.0240, 20.2012, -39.4860



190.8090, 19.8142, -8.6025

# Sweetspot

The Sweet Spot groups the original color and five complimentary colors.



191.6050, -17.5533, 30.1644



243.5730, -5.7055, 10.0215



182.0600, 9.3374, 38.5354



120.4200, -3.6581, 6.6477



0.0000, 0.0000, 0.0000



128.0000, 0.0000, 0.0000



# Same Dimension

The Same Dimension uses a secret algorithm to generate beautiful new colors.



191.6050, -17.5533, 30.1644



208.4770, -23.4062, 40.8007



212.1500, -27.6819, 12.1465



106.6370, -2.7790, 4.7034



89.6050, -44.1753, 75.7684



24.3310, -11.9952, 20.7577

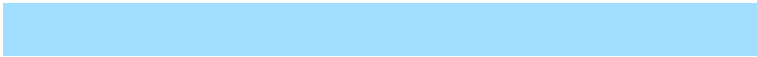


# Inverse Universe

The Inverse Universe completely reimagines the original color for something new.



190.3950, 17.5533, -30.1644



206.9360, 23.6956, -40.2859



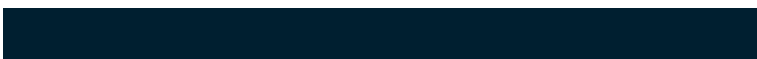
169.8500, 27.6820, -12.1464



106.3630, 2.7790, -4.7034



86.3950, 44.1753, -75.7684



23.6690, 11.9952, -20.7577



# Previews

## White Background



This preview shows how the YUV color 191.6050, -17.5533, 30.1644 looks on a white background.

## Color Contrast Check

Large Text (above 18pt) WCAG AA × Fail

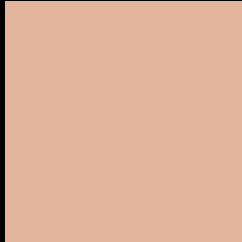
Any Text WCAG AA × Fail

Large Text (above 18pt) WCAG AAA × Fail

Any Text WCAG AAA × Fail



# Black Background



This preview shows how the YUV color 191.6050, -17.5533, 30.1644 looks on a black background.

## Color Contrast Check

Large Text (above 18pt) WCAG AA ✓ Pass

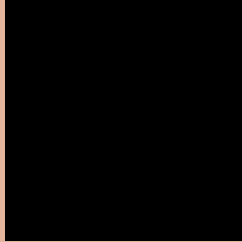
Any Text WCAG AA ✓ Pass

Large Text (above 18pt) WCAG AAA ✓ Pass

Any Text WCAG AAA ✓ Pass

If you want to check with other color combinations, try the [Color Contrast Checker](#).

# YUV 191.6050, -17.5533, 30.1644 Background



This preview shows how black text looks on a background with the YUV color 191.6050, -17.5533, 30.1644.



This preview shows how white text looks on a background with the YUV color 191.6050, -17.5533,



# Color Blindness Simulation

Color vision deficiency is a very complex topic, and I could not describe the different causes any better than Wikipedia does, so if you want to learn more, you should check out their [article about color blindness](#).

## Dichromacy



### Original Color

191.6050, -17.5533, 30.1644

### Protanopia

189.8690, -14.7254, 9.7619

### Deuteranopia

191.2840, -17.3950, 26.0609



## Tritanopia

193.7420, -1.8448, 31.7983

# Trichromacy



## Original Color

191.6050, -17.5533, 30.1644

## Protanomaly

190.6850, -15.6207, 16.9393

## Deuteranomaly

191.2950, -17.4004, 27.8053

## Tritanomaly

193.2490, -7.5178, 31.3536

# Monochromacy



## Original Color

191.6050, -17.5533, 30.1644

## Achromatopsia

192.0000, 0.0000, 0.0000

## Achromatomaly

191.7580, -6.2897, 10.7362

# CSS Examples

## Text

The CSS property to change the color of the text to YUV 191.6050, -17.5533, 30.1644 is called "color". The color property can be set on classes, ids or directly on the HTML element.

This example shows how text in the color `rgb(226, 181, 156)` looks like.

```
.text, #text, p{  
    color:rgb(226, 181, 156)  
}
```

If you want to add a text shadow in that color use the text-shadow property, you can generate a text shadow directly with our [CSS Text Shadow Generator](#).

Here you see how black text with a 4 pixel rgb(226, 181, 156) colored shadow looks like.

```
.shadow{ text-shadow: 4px 4px 2px rgb(226, 181, 156) }
```

## Border

The CSS property to change the border of an element to YUV 191.6050, -17.5533, 30.1644 is called "border".

The border property can be set on classes, ids or directly on the HTML element.

This example shows the color as border, it can be applied via the CSS property "border" or "border-color".

```
.border, #border, table{ border:4px solid rgb(226, 181, 156) }
```



If only the border color should be changed use the property `border-color`.

```
.border{ border-color:rgb(226, 181, 156) }
```

If you want to add a box shadow in that color use:

Here you see how a box with a 4 pixel `rgb(226, 181, 156)` colored shadow looks like.

```
.boxshadow{ -moz-box-shadow:4px 4px 4px  
4px rgb(226, 181, 156); -webkit-box-  
shadow:4px 4px 4px 4px rgb(226, 181, 156);  
box-shadow:4px 4px 4px 4px rgb(226, 181,  
156) }
```

# Background

The CSS property to change the background color of an element to YUV 191.6050, -17.5533, 30.1644 is called "background". The background property can be set on classes, ids or directly on the HTML element.

```
.background, #background, body{  
background: rgb(226, 181, 156) }
```

If only the background color should be changed can be used:

```
.background{ background-color: rgb(226,  
181, 156) }
```

This example shows the color as background, it is applied via the CSS property "background".

To optimize and compress your CSS code, you can use our [online CSS compressor and optimizer](#) based on csstidy. If you want to create a linear or radial gradient as background or border, check our [CSS Gradient Generator](#).

Hey! You found this booklet interesting? Support Converting Colors with the new Membership Option!

The pro membership hides all ads, plus gives you double the colors in the color bucket, and more awesome pro features!

**[Learn more, Memberships starting at \\$2.50/m!](#)**

**Follow me  
on Twitter!**

@ConvertingColor