

# Converting Colors

YUV(191.7460, -18.1158,  
23.9018)

Have a look what the booklet for  
YUV(191.7460, -18.1158, 23.9018)  
contains.

<b>YUV(191.7460, -18.1158, 23.9018)</b> .....	3
<b><i>Conversions</i></b> .....	4
<b><i>Details</i></b> .....	6
<b><i>Harmonies</i></b> .....	12
<b><i>Previews</i></b> .....	24
<b><i>Color Blindness Simulation</i></b> .....	28
<b><i>CSS Examples</i></b> .....	31

# Color

**YUV(191.7460, -18.1158,  
23.9018)**

# Conversions

## Conversions Part 1

Format	Color
Hex	DBB99B
RGB	219, 185, 155
RGB Percent	86%, 73%, 61%
CMY	0.1412, 0.2745, 0.3922
CMYK	0.00, 0.16, 0.29, 0.14
HSL	28°, 47%, 73%
HSV	28°, 29%, 86%
XYZ	52.4788, 52.1246, 38.3055
YIQ	191.7460, 29.8940, -2.1220

# Conversions

## Conversions Part 2

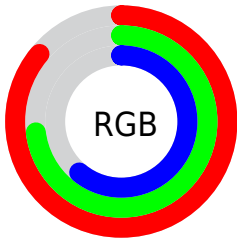
<b>Format</b>	<b>Color</b>
<b>R<sub>Y</sub>B</b>	219, 211, 155
Decimal	14399899
CIE Lab	77.36, 7.80, 19.77
CIE LCh	77, 21.252, 68.477
Yxy	52.1246, 0.3672, 0.3647
Android (android.graphics.Color)	4292589979 (0xFFDDBB99B)
YUV	191.7460, -18.1158, 23.9018
Hunter-Lab	72.1973, 3.4027, 19.0809

# Details

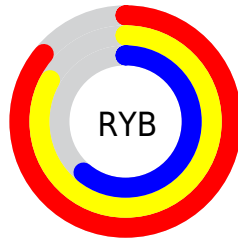
The YUV color **191.7460, -18.1158, 23.9018** is a light color, and the websafe version is hex **FFCC99**. A complement of this color would be **182.2540, 18.1158, -23.9018**, and the grayscale version is **192.0000, 0.0000, 0.0000**.

A 20% lighter version of the original color is **241.6520, -15.6044, 11.7062**, and **138.0770, -16.8000, 21.8575** is the 20% darker color. If you saturate the color by 10%, you get **182.1940, -24.2526, 32.2789**, and if you desaturate by 10%, it is **201.2980, -11.9789, 15.5247**.

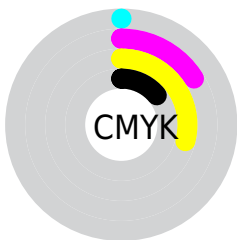
# Distribution



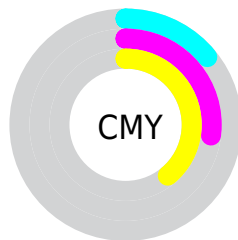
- Red (86%)
- Green (73%)
- Blue (61%)



- Red (86%)
- Yellow (83%)
- Blue (61%)



- Cyan (0%)
- Magenta (16%)
- Yellow (29%)
- Black (14%)



- Cyan (14%)
- Magenta (27%)
- Yellow (39%)

# Brightness & Saturation Gradients

These gradients show how the YUV color 191.7460, -18.1158, 23.9018 changes by changing the brightness by 10 percent. The first figure shows a shift by +10% for each color and the second figure -10%.

Similar to the brightness gradients but the following saturation gradients show a change of the YUV color 191.7460, -18.1158, 23.9018 by changing the saturation by 10% instead.



■ 191.7460,  
-18.1158, 23.9018

■ 191.7460,  
-18.1158, 23.9018

255.0000, 0.0000,  
0.0000

■ 164.5610,  
-17.5316, 23.1870

■ 241.6520,  
-15.6044, 11.7062

■ 138.0770,  
-16.8000, 21.8575

■ 253.0620, -7.4256,  
1.6996

■ 112.4790,  
-16.5051, 20.6279

■ 87.9950, -15.7735,  
19.2984

■ 64.5110, -15.0419,  
17.9689

■ 41.7280, -14.1629,  
16.0245

■ 21.6290, -10.6631,

13.4804

■ 0.0000, 0.0000,  
0.0000

■ 191.7460,  
-18.1158, 23.9018

■ 191.7460,  
-18.1158, 23.9018

■ 182.1940,  
-24.2526, 32.2789

■ 201.2980,  
-11.9789, 15.5247

■ 173.2290,  
-30.6789, 40.1412

■ 210.2630, -5.5527,  
7.6623

■ 163.6770,  
-36.8158, 48.5183

■ 219.8150, 0.5842,  
-0.7148

■ 154.1250,  
-42.9526, 56.8954

■ 229.3670, 6.7211,  
-9.0919

■ 145.1600,  
-49.3789, 64.7577

■ 237.1920, 8.7793,  
-15.9544

■ 135.7220,  
-55.0789, 73.0348

■ 244.2360, 5.3067,  
-22.1320

■ 126.7570,  
-61.5052, 80.8971

■ 125.9420,  
-62.0894, 81.6119

# Harmonies

## Analogous

The Analogous color harmony consists of three colors that are next to each other on the color wheel.



193.4680, -13.0487, 32.0386



191.7460, -18.1158, 23.9018



190.1310, -18.7986, 9.5321

# Triad

The Triadic color harmony groups three colors that are evenly spaced from another and form a triangle on the color wheel.



191.7460, -18.1158, 23.9018



183.6640, 6.0816, -37.4163



193.7140, 13.9450, 7.2668

# Complementary

The Complementary color scheme is a pair of colors which are on the opposite of each other on the color wheel.



191.7460, -18.1158, 23.9018



182.2540, 18.1158, -23.9018

# Split Complementary

Split-complementary colors differ from the complementary color scheme. The scheme consists of three colors, the original color and two neighbors of the complement color.



190.9610, 19.2462, -13.1208



191.7460, -18.1158, 23.9018



183.7590, 15.4018, -40.1306

# Square

The Square scheme is like the rectangle color scheme, but the four colors are evenly spaced on the color wheel.



191.7460, -18.1158, 23.9018



184.9940, -4.4340, -24.5507



186.9650, 19.7373, -30.6643



194.6360, 5.6025, 23.1212



# Rectangle

The Rectangle color scheme consists of four colors that form a rectangle on the color wheel.



191.7460, -18.1158, 23.9018



188.4500, -15.9978, -2.1486



186.9650, 19.7373, -30.6643



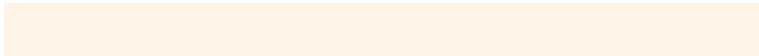
192.6530, 16.4401, 0.3043

# Sweetspot

The Sweet Spot groups the original color and five complimentary colors.



191.7460, -18.1158, 23.9018



245.3340, -6.5737, 8.4771



178.0120, 5.4171, 35.9465



121.5940, -4.2368, 5.6181



0.0000, 0.0000, 0.0000



128.0000, 0.0000, 0.0000



# Same Dimension

The Same Dimension uses a secret algorithm to generate beautiful new colors.



191.7460, -18.1158, 23.9018



217.2650, -25.2736, 33.0936



210.5300, -27.3763, 7.4282



105.2240, -3.0684, 4.1886



99.2740, -48.9421, 64.6577



26.6680, -13.1473, 16.9542

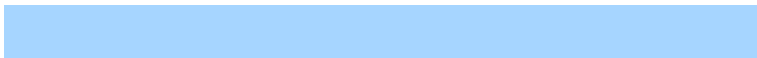


# Inverse Universe

The Inverse Universe completely reimagines the original color for something new.



182.2540, 18.1158, -23.9018



203.7350, 25.2736, -33.0936



163.4700, 27.3763, -7.4282



103.7760, 3.0684, -4.1886



73.7260, 48.9421, -64.6577



19.3320, 13.1473, -16.9542



# Previews

## White Background



This preview shows how the YUV color 191.7460, -18.1158, 23.9018 looks on a white background.

## Color Contrast Check

Large Text (above 18pt) WCAG AA × Fail

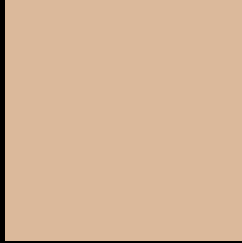
Any Text WCAG AA × Fail

Large Text (above 18pt) WCAG AAA × Fail

Any Text WCAG AAA × Fail



# Black Background



This preview shows how the YUV color 191.7460, -18.1158, 23.9018 looks on a black background.

## Color Contrast Check

Large Text (above 18pt) WCAG AA ✓ Pass

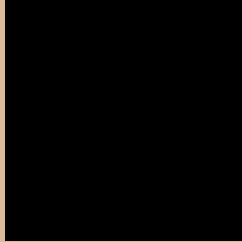
Any Text WCAG AA ✓ Pass

Large Text (above 18pt) WCAG AAA ✓ Pass

Any Text WCAG AAA ✓ Pass

If you want to check with other color combinations, try the [Color Contrast Checker](#).

# YUV 191.7460, -18.1158, 23.9018 Background



This preview shows how black text looks on a background with the YUV color 191.7460, -18.1158, 23.9018.



This preview shows how white text looks on a background with the YUV color 191.7460, -18.1158,



# Color Blindness Simulation

Color vision deficiency is a very complex topic, and I could not describe the different causes any better than Wikipedia does, so if you want to learn more, you should check out their [article about color blindness](#).

## Dichromacy



### Original Color

191.7460, -18.1158, 23.9018

### Protanopia

190.5270, -16.0358, 10.0618

### Deuteranopia

192.0560, -18.2686, 26.2609



## Tritanopia

194.4530, -0.2233, 25.0357

# Trichromacy



## Original Color

191.7460, -18.1158, 23.9018

## Protanomaly

191.0330, -16.7783, 14.8801

## Deuteranomaly

191.7570, -18.1212, 25.6461

## Tritanomaly

193.7320, -6.7699, 24.7910

# Monochromacy



## Original Color

191.7460, -18.1158, 23.9018

## Achromatopsia

192.0000, 0.0000, 0.0000

## Achromatomaly

191.7470, -6.2843, 8.9919

# CSS Examples

## Text

The CSS property to change the color of the text to YUV 191.7460, -18.1158, 23.9018 is called "color". The color property can be set on classes, ids or directly on the HTML element.

This example shows how text in the color `rgb(219, 185, 155)` looks like.

```
.text, #text, p{  
    color:rgb(219, 185, 155)  
}
```

If you want to add a text shadow in that color use the text-shadow property, you can generate a text shadow directly with our [CSS Text Shadow Generator](#).

Here you see how black text with a 4 pixel rgb(219, 185, 155) colored shadow looks like.

```
.shadow{ text-shadow: 4px 4px 2px rgb(219, 185, 155) }
```

## Border

The CSS property to change the border of an element to YUV 191.7460, -18.1158, 23.9018 is called "border".

The border property can be set on classes, ids or directly on the HTML element.

This example shows the color as border, it can be applied via the CSS property "border" or "border-color".

```
.border, #border, table{ border:4px solid rgb(219, 185, 155) }
```



If only the border color should be changed use the property `border-color`.

```
.border{ border-color:rgb(219, 185, 155) }
```

If you want to add a box shadow in that color use:

Here you see how a box with a 4 pixel `rgb(219, 185, 155)` colored shadow looks like.

```
.boxshadow{ -moz-box-shadow:4px 4px 4px  
4px rgb(219, 185, 155); -webkit-box-  
shadow:4px 4px 4px 4px rgb(219, 185, 155);  
box-shadow:4px 4px 4px 4px rgb(219, 185,  
155) }
```

# Background

The CSS property to change the background color of an element to YUV 191.7460, -18.1158, 23.9018 is called "background". The background property can be set on classes, ids or directly on the HTML element.

```
.background, #background, body{  
background: rgb(219, 185, 155) }
```

If only the background color should be changed can be used:

```
.background{ background-color: rgb(219,  
185, 155) }
```

This example shows the color as background, it is applied via the CSS property "background".

To optimize and compress your CSS code, you can use our [online CSS compressor and optimizer](#) based on csstidy. If you want to create a linear or radial gradient as background or border, check our [CSS Gradient Generator](#).

Hey! You found this booklet interesting? Support Converting Colors with the new Membership Option!

The pro membership hides all ads, plus gives you double the colors in the color bucket, and more awesome pro features!

**[Learn more, Memberships starting at \\$2.50/m!](#)**

**Follow me  
on Twitter!**

@ConvertingColor