

Converting Colors

YUV(191.8340, -21.6102,
24.7016)

Have a look what the booklet for
YUV(191.8340, -21.6102, 24.7016)
contains.

YUV(191.8340, -21.6102, 24.7016)	3
<i>Conversions</i>	4
<i>Details</i>	6
<i>Harmonies</i>	12
<i>Previews</i>	24
<i>Color Blindness Simulation</i>	28
<i>CSS Examples</i>	31

Color

**YUV(191.8340, -21.6102,
24.7016)**

Conversions

Conversions Part 1

Format	Color
Hex	DCBA94
RGB	220, 186, 148
RGB Percent	86%, 73%, 58%
CMY	0.1373, 0.2706, 0.4196
CMYK	0.00, 0.15, 0.33, 0.14
HSL	32°, 51%, 72%
HSV	32°, 33%, 86%
XYZ	52.4194, 52.4716, 35.3822
YIQ	191.8340, 32.4620, -4.6100

Conversions

Conversions Part 2

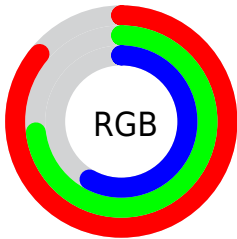
Format	Color
R _{YB}	212, 220, 148
Decimal	14465684
CIE Lab	77.56, 6.75, 23.81
CIE LCh	78, 24.751, 74.172
Yxy	52.4716, 0.3737, 0.3741
Android (android.graphics.Color)	4292655764 (0xFFDCBA94)
YUV	191.8340, -21.6102, 24.7016
Hunter-Lab	72.4373, 2.4067, 21.7457

Details

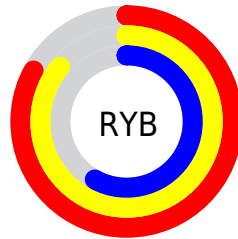
The YUV color $191.8340, -21.6102, 24.7016$ is a light color, and the websafe version is hex FFCC99 . A complement of this color would be $176.1660, 21.6102, -24.7016$, and the grayscale version is $192.0000, 0.0000, 0.0000$.

A 20% lighter version of the original color is $241.3270, -19.3882, 11.9912$, and $138.1650, -20.2943, 22.6573$ is the 20% darker color. If you saturate the color by 10%, you get $183.4560, -28.3258, 32.0491$, and if you desaturate by 10%, it is $200.2120, -14.8945, 17.3541$.

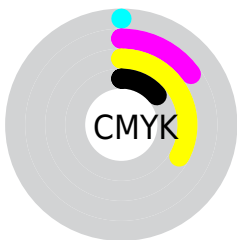
Distribution



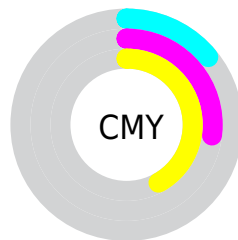
- Red (86%)
- Green (73%)
- Blue (58%)



- Red (83%)
- Yellow (86%)
- Blue (58%)



- Cyan (0%)
- Magenta (15%)
- Yellow (33%)
- Black (14%)



- Cyan (14%)
- Magenta (27%)
- Yellow (42%)

Brightness & Saturation Gradients

These gradients show how the YUV color 191.8340, -21.6102, 24.7016 changes by changing the brightness by 10 percent. The first figure shows a shift by +10% for each color and the second figure -10%.

Similar to the brightness gradients but the following saturation gradients show a change of the YUV color 191.8340, -21.6102, 24.7016 by changing the saturation by 10% instead.

191.8340,
-21.6102, 24.7016

191.8340,
-21.6102, 24.7016

255.0000, 0.0000,
0.0000

164.6490,
-21.0260, 23.9868

241.3270,
-19.3882, 11.9912

138.1650,
-20.2943, 22.6573

252.1500,
-10.9200, 2.4994

112.6810,
-19.5627, 21.3278

87.8980, -18.6837,
19.3835

63.8270, -17.6627,
18.5687

41.5880, -18.5309,
17.0243

22.2160, -10.9525,

12.9656

■ 0.0000, 0.0000,
0.0000

■ 191.8340,
-21.6102, 24.7016

■ 191.8340,
-21.6102, 24.7016

■ 183.4560,
-28.3258, 32.0491

■ 200.2120,
-14.8945, 17.3541

■ 174.4910,
-34.7521, 39.9114

■ 209.1770, -8.4683,
9.4918

■ 166.1130,
-41.4677, 47.2589

■ 217.5550, -1.7526,
2.1443

■ 157.1480,
-47.8940, 55.1212

■ 226.5200, 4.6736,
-5.7180

■ 148.7700,
-54.6096, 62.4687

■ 234.5560, 10.0789,
-12.7656

■ 140.3920,
-61.3253, 69.8162

■ 240.4260, 7.1850,
-17.9136

■ 133.8720,
-65.9989, 75.5343

■ 244.5350, 5.1592,
-21.5172

Harmonies

Analogous

The Analogous color harmony consists of three colors that are next to each other on the color wheel.



193.6920, -16.1172, 36.2271



191.8340, -21.6102, 24.7016



189.8380, -21.1191, 7.1581

Triad

The Triadic color harmony groups three colors that are evenly spaced from another and form a triangle on the color wheel.



191.8340, -21.6102, 24.7016



181.9340, 9.8925, -46.4231



194.9750, 14.8023, 12.2999

Complementary

The Complementary color scheme is a pair of colors which are on the opposite of each other on the color wheel.



191.8340, -21.6102, 24.7016



176.1660, 21.6102, -24.7016

Split Complementary

Split-complementary colors differ from the complementary color scheme. The scheme consists of three colors, the original color and two neighbors of the complement color.



191.9550, 21.7142, -11.3615



191.8340, -21.6102, 24.7016



183.1540, 19.6441, -47.4931

Square

The Square scheme is like the rectangle color scheme, but the four colors are evenly spaced on the color wheel.



191.8340, -21.6102, 24.7016



183.6940, -2.8071, -33.0576



186.9800, 23.6739, -33.3085



196.0390, 4.4178, 29.7838

Rectangle

The Rectangle color scheme consists of four colors that form a rectangle on the color wheel.



191.8340, -21.6102, 24.7016



187.4880, -17.0026, -6.5670



186.9800, 23.6739, -33.3085



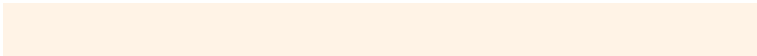
194.6150, 17.4448, 4.7226

Sweetspot

The Sweet Spot groups the original color and five complimentary colors.



191.8340, -21.6102, 24.7016



245.1060, -7.4473, 8.6770



173.5180, 4.6746, 40.7647



121.4800, -4.6736, 5.7180



0.0000, 0.0000, 0.0000



128.0000, 0.0000, 0.0000

Same Dimension

The Same Dimension uses a secret algorithm to generate beautiful new colors.



191.8340, -21.6102, 24.7016



216.1250, -29.6416, 34.0934



211.4930, -31.3020, 6.5836



105.2240, -3.0684, 4.1886



105.7310, -52.1254, 58.9949



27.8420, -13.7261, 15.9246

Inverse Universe

The Inverse Universe completely reimagines the original color for something new.



176.1660, 21.6102, -24.7016



194.8750, 29.6416, -34.0934



156.5070, 31.3020, -6.5836



103.1890, 3.3578, -3.6738



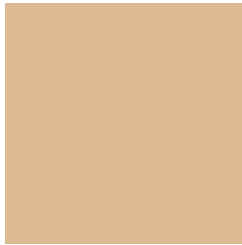
67.8560, 51.8360, -59.5097



18.1580, 13.7261, -15.9246

Previews

White Background



This preview shows how the YUV color 191.8340, -21.6102, 24.7016 looks on a white background.

Color Contrast Check

Large Text (above 18pt) WCAG AA × Fail

Any Text WCAG AA × Fail

Large Text (above 18pt) WCAG AAA × Fail

Any Text WCAG AAA × Fail

Black Background



This preview shows how the YUV color 191.8340, -21.6102, 24.7016 looks on a black background.

Color Contrast Check

Large Text (above 18pt) WCAG AA ✓ Pass

Any Text WCAG AA ✓ Pass

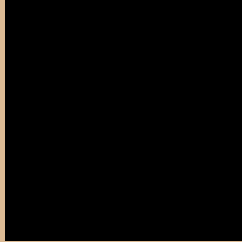
Large Text (above 18pt) WCAG AAA ✓ Pass

Any Text WCAG AAA ✓ Pass

If you want to check with other color combinations, try the [Color Contrast Checker](#).

YUV 191.8340, -21.6102, 24.7016

Background



This preview shows how black text looks on a background with the YUV color 191.8340, -21.6102, 24.7016.



This preview shows how white text looks on a background with the YUV color 191.8340, -21.6102, 24.7016.

Color Blindness Simulation

Color vision deficiency is a very complex topic, and I could not describe the different causes any better than Wikipedia does, so if you want to learn more, you should check out their [article about color blindness](#).

Dichromacy



Original Color

191.8340, -21.6102, 24.7016

Protanopia

190.3270, -19.3882, 11.9912

Deuteranopia

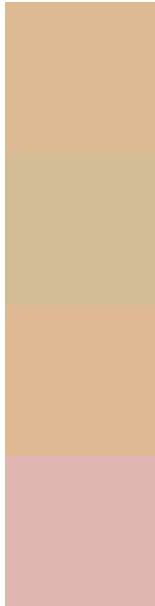
192.1550, -21.7684, 28.8051



Tritanopia

195.0510, -0.5181, 26.2653

Trichromacy



Original Color

191.8340, -21.6102, 24.7016

Protanomaly

190.8330, -20.1307, 16.8095

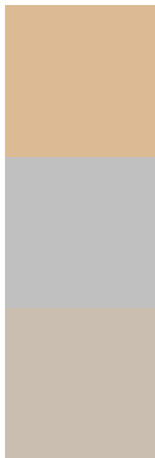
Deuteranomaly

192.1440, -21.7630, 27.0607

Tritanomaly

193.6890, -8.2277, 25.7057

Monochromacy



Original Color

191.8340, -21.6102, 24.7016

Achromatopsia

192.0000, 0.0000, 0.0000

Achromatomaly

191.9920, -7.8841, 8.7770

CSS Examples

Text

The CSS property to change the color of the text to YUV 191.8340, -21.6102, 24.7016 is called "color". The color property can be set on classes, ids or directly on the HTML element.

This example shows how text in the color `rgb(220, 186, 148)` looks like.

```
.text, #text, p{  
    color:rgb(220, 186, 148)  
}
```

If you want to add a text shadow in that color use the text-shadow property, you can generate a text shadow directly with our [CSS Text Shadow Generator](#).

Here you see how black text with a 4 pixel rgb(220, 186, 148) colored shadow looks like.

```
.shadow{ text-shadow: 4px 4px 2px rgb(220, 186, 148) }
```

Border

The CSS property to change the border of an element to YUV 191.8340, -21.6102, 24.7016 is called "border".

The border property can be set on classes, ids or directly on the HTML element.

This example shows the color as border, it can be applied via the CSS property "border" or "border-color".

```
.border, #border, table{ border:4px solid rgb(220, 186, 148) }
```


If only the border color should be changed use the property `border-color`.

```
.border{ border-color:rgb(220, 186, 148) }
```

If you want to add a box shadow in that color use:

Here you see how a box with a 4 pixel `rgb(220, 186, 148)` colored shadow looks like.

```
.boxshadow{ -moz-box-shadow:4px 4px 4px  
4px rgb(220, 186, 148); -webkit-box-  
shadow:4px 4px 4px 4px rgb(220, 186, 148);  
box-shadow:4px 4px 4px 4px rgb(220, 186,  
148) }
```

Background

The CSS property to change the background color of an element to YUV 191.8340, -21.6102, 24.7016 is called "background". The background property can be set on classes, ids or directly on the HTML element.

```
.background, #background, body{  
background: rgb(220, 186, 148) }
```

If only the background color should be changed can be used:

```
.background{ background-color: rgb(220,  
186, 148) }
```

This example shows the color as background, it is applied via the CSS property "background".

To optimize and compress your CSS code, you can use our [online CSS compressor and optimizer](#) based on csstidy. If you want to create a linear or radial gradient as background or border, check our [CSS Gradient Generator](#).

Hey! You found this booklet interesting? Support Converting Colors with the new Membership Option!

The pro membership hides all ads, plus gives you double the colors in the color bucket, and more awesome pro features!

[Learn more, Memberships starting at \\$2.50/m!](#)

**Follow me
on Twitter!**

@ConvertingColor