

Converting Colors

YUV(191.9820, -2.4561,
41.2348)

Have a look what the booklet for
YUV(191.9820, -2.4561, 41.2348)
contains.

YUV(191.9820, -2.4561, 41.2348)	3
<i>Conversions</i>	4
<i>Details</i>	6
<i>Harmonies</i>	12
<i>Previews</i>	24
<i>Color Blindness Simulation</i>	28
<i>CSS Examples</i>	31

Color

**YUV(191.9820, -2.4561,
41.2348)**

Conversions

Conversions Part 1

Format	Color
Hex	EFA9BB
RGB	239, 169, 187
RGB Percent	94%, 66%, 73%
CMY	0.0627, 0.3373, 0.2667
CMYK	0.00, 0.29, 0.22, 0.06
HSL	345°, 69%, 80%
HSV	345°, 29%, 94%
XYZ	58.7542, 50.3145, 53.6287
YIQ	191.9820, 35.9420, 20.4380

Conversions

Conversions Part 2

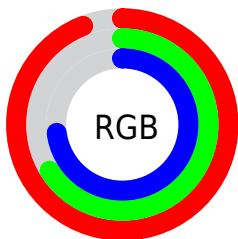
Format	Color
R _Y B	239, 169, 187
Decimal	15706555
CIE Lab	76.26, 28.25, 1.13
CIE LCh	76, 28.270, 2.283
Yxy	50.3145, 0.3611, 0.3093
Android (android.graphics.Color)	4293896635 (0xFFEFA9BB)
YUV	191.9820, -2.4561, 41.2348
Hunter-Lab	70.9327, 23.7209, 4.8267

Details

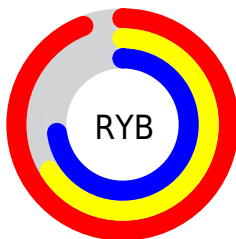
The YUV color **191.9820, -2.4561, 41.2348** is a light color, and the websafe version is hex **CC9999**. A complement of this color would be **216.0180, 2.4561, -41.2348**, and the grayscale version is **192.0000, 0.0000, 0.0000**.

A 20% lighter version of the original color is **236.0220, 3.4402, 16.6437**, and **137.7860, -1.8665, 38.7757** is the 20% darker color. If you saturate the color by 10%, you get **175.8420, -3.3731, 55.3896**, and if you desaturate by 10%, it is **208.1220, -1.5391, 27.0800**.

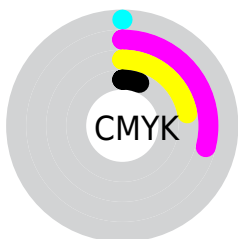
Distribution



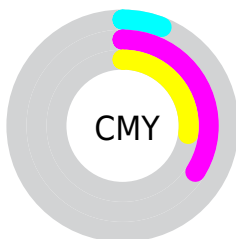
- Red (94%)
- Green (66%)
- Blue (73%)



- Red (94%)
- Yellow (66%)
- Blue (73%)



- Cyan (0%)
- Magenta (29%)
- Yellow (22%)
- Black (6%)



- Cyan (6%)
- Magenta (34%)
- Yellow (27%)

Brightness & Saturation Gradients

These gradients show how the YUV color 191.9820, -2.4561, 41.2348 changes by changing the brightness by 10 percent. The first figure shows a shift by +10% for each color and the second figure -10%.


Similar to the brightness gradients but the following saturation gradients show a change of the YUV color 191.9820, -2.4561, 41.2348 by changing the saturation by 10% instead.

 191.9820, -2.4561,
41.2348

 191.9820, -2.4561,
41.2348

255.0000, 0.0000,
0.0000


 164.3840, -2.1613,
40.0052


 236.0220, 3.4402,
16.6437

 137.7860, -1.8665,
38.7757

254.4130, 0.2894,
0.5148

 111.8890, -1.4243,
36.9313

 86.8780, -1.4189,
35.1870

 62.3940, -0.6872,
33.8575

 39.0240, 0.4812,
32.4280

 17.4150, 0.7814,

29.4540

■ 7.5890, -3.2484,
15.2694

■ 0.0000, 0.0000,
0.0000

■ 191.9820, -2.4561,
41.2348

■ 191.9820, -2.4561,
41.2348

■ 175.8420, -3.3731,
55.3896

■ 208.1220, -1.5391,
27.0800

■ 159.7020, -4.2901,
69.5443

■ 224.2620, -0.6222,
12.9252

■ 143.6760, -4.7703,
83.5991

■ 240.2880, -0.1420,
-1.1296

■ 127.5360, -5.6872,
97.7539

■ 250.2160, 2.3585,
-9.8364

■ 111.3960, -6.6042,
111.9087

■ 95.8430, -7.8106,
125.5487

■ 79.8170, -8.2908,
139.6035

■ 78.4150, -8.5856,
140.8330

Harmonies

Analogous

The Analogous color harmony consists of three colors that are next to each other on the color wheel.



192.5100, 10.1016, 26.7397



191.9820, -2.4561, 41.2348



190.4910, -14.5391, 43.4194

Triad

The Triadic color harmony groups three colors that are evenly spaced from another and form a triangle on the color wheel.



191.9820, -2.4561, 41.2348



183.6900, -20.0602, -5.8671



179.6900, 26.7748, -47.9631

Complementary

The Complementary color scheme is a pair of colors which are on the opposite of each other on the color wheel.



191.9820, -2.4561, 41.2348



216.0180, 2.4561, -41.2348

Split Complementary

Split-complementary colors differ from the complementary color scheme. The scheme consists of three colors, the original color and two neighbors of the complement color.



175.9740, 19.2398, -57.8592



191.9820, -2.4561, 41.2348



179.9350, -8.3490, -28.8840

Square

The Square scheme is like the rectangle color scheme, but the four colors are evenly spaced on the color wheel.



191.9820, -2.4561, 41.2348



186.5680, -24.9300, 16.1649



176.8860, 5.9722, -49.0120



186.1320, 26.5569, -24.6718

Rectangle

The Rectangle color scheme consists of four colors that form a rectangle on the color wheel.



191.9820, -2.4561, 41.2348



189.8510, -20.6325, 37.8417



176.8860, 5.9722, -49.0120



177.9020, 25.1913, -53.4111

Sweetspot

The Sweet Spot groups the original color and five complimentary colors.



191.9820, -2.4561, 41.2348



239.5610, -0.7696, 13.5400



192.2290, 23.0581, 24.3552



117.9410, -0.4639, 8.8217



0.0000, 0.0000, 0.0000



128.0000, 0.0000, 0.0000

Same Dimension

The Same Dimension uses a secret algorithm to generate beautiful new colors.



191.9820, -2.4561, 41.2348



195.2330, -3.0729, 52.4157



199.3220, -14.9487, 34.7976



111.9300, -0.4585, 7.0774



60.3740, -6.5934, 108.4200



18.3400, -2.1396, 33.0278

Inverse Universe

The Inverse Universe completely reimagines the original color for something new.



191.9820, -2.4561, 41.2348



195.2330, -3.0729, 52.4157



208.6780, 14.9487, -34.7976



111.9300, -0.4585, 7.0774



60.3740, -6.5934, 108.4200



18.3400, -2.1396, 33.0278

Previews

White Background



This preview shows how the YUV color 191.9820, -2.4561, 41.2348 looks on a white background.

Color Contrast Check

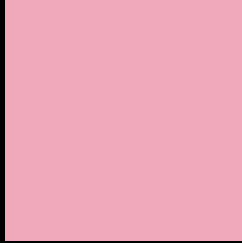
Large Text (above 18pt) WCAG AA × Fail

Any Text WCAG AA × Fail

Large Text (above 18pt) WCAG AAA × Fail

Any Text WCAG AAA × Fail

Black Background



This preview shows how the YUV color 191.9820, -2.4561, 41.2348 looks on a black background.

Color Contrast Check

Large Text (above 18pt) WCAG AA ✓ Pass

Any Text WCAG AA ✓ Pass

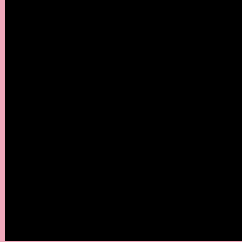
Large Text (above 18pt) WCAG AAA ✓ Pass

Any Text WCAG AAA ✓ Pass

If you want to check with other color combinations, try the [Color Contrast Checker](#).

YUV 191.9820, -2.4561, 41.2348

Background



This preview shows how black text looks on a background with the YUV color 191.9820, -2.4561, 41.2348.



This preview shows how white text looks on a background with the YUV color 191.9820, -2.4561,

41.2348.

Color Blindness Simulation

Color vision deficiency is a very complex topic, and I could not describe the different causes any better than Wikipedia does, so if you want to learn more, you should check out their [article about color blindness](#).

Dichromacy



Original Color

191.9820, -2.4561, 41.2348

Protanopia

188.8520, 4.5100, 0.1298

Deuteranopia

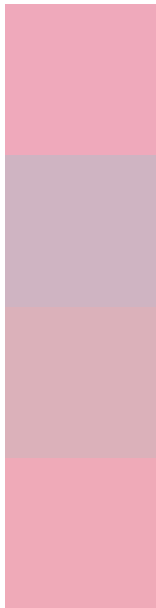
190.1160, -2.5222, 15.6843



Tritanopia

192.1130, -4.4927, 41.1199

Trichromacy



Original Color

191.9820, -2.4561, 41.2348

Protanomaly

189.6690, 2.1352, 15.1993

Deuteranomaly

190.5840, -2.2599, 24.9208

Tritanomaly

192.2270, -4.0559, 41.0199

Monochromacy



Original Color

191.9820, -2.4561, 41.2348

Achromatopsia

192.0000, 0.0000, 0.0000

Achromatomaly

192.1590, -1.0644, 14.7696

CSS Examples

Text

The CSS property to change the color of the text to YUV 191.9820, -2.4561, 41.2348 is called "color". The color property can be set on classes, ids or directly on the HTML element.

This example shows how text in the color `rgb(239, 169, 187)` looks like.

```
.text, #text, p{  
    color:rgb(239, 169, 187)  
}
```

If you want to add a text shadow in that color use the text-shadow property, you can generate a text shadow directly with our [CSS Text Shadow Generator](#).

Here you see how black text with a 4 pixel rgb(239, 169, 187) colored shadow looks like.

```
.shadow{ text-shadow: 4px 4px 2px rgb(239, 169, 187) }
```

Border

The CSS property to change the border of an element to YUV 191.9820, -2.4561, 41.2348 is called "border". The border property can be set on classes, ids or directly on the HTML element.

This example shows the color as border, it can be applied via the CSS property "border" or "border-color".

```
.border, #border, table{ border:4px solid rgb(239, 169, 187) }
```


If only the border color should be changed use the property `border-color`.

```
.border{ border-color:rgb(239, 169, 187) }
```

If you want to add a box shadow in that color use:

Here you see how a box with a 4 pixel `rgb(239, 169, 187)` colored shadow looks like.

```
.boxshadow{ -moz-box-shadow:4px 4px 4px  
4px rgb(239, 169, 187); -webkit-box-  
shadow:4px 4px 4px 4px rgb(239, 169, 187);  
box-shadow:4px 4px 4px 4px rgb(239, 169,  
187) }
```

Background

The CSS property to change the background color of an element to YUV 191.9820, -2.4561, 41.2348 is called "background". The background property can be set on classes, ids or directly on the HTML element.

```
.background, #background, body{  
background: rgb(239, 169, 187) }
```

If only the background color should be changed can be used:

```
.background{ background-color: rgb(239,  
169, 187) }
```

This example shows the color as background, it is applied via the CSS property "background".

To optimize and compress your CSS code, you can use our [online CSS compressor and optimizer](#) based on csstidy. If you want to create a linear or radial gradient as background or border, check our [CSS Gradient Generator](#).

Hey! You found this booklet interesting? Support Converting Colors with the new Membership Option!

The pro membership hides all ads, plus gives you double the colors in the color bucket, and more awesome pro features!

[Learn more, Memberships starting at \\$2.50/m!](#)

**Follow me
on Twitter!**

@ConvertingColor