

Converting Colors

YUV(192.1320, -16.8271,
30.5792)

Have a look what the booklet for
YUV(192.1320, -16.8271, 30.5792)
contains.

YUV(192.1320, -16.8271, 30.5792)	3
<i>Conversions</i>	4
<i>Details</i>	6
<i>Harmonies</i>	12
<i>Previews</i>	24
<i>Color Blindness Simulation</i>	28
<i>CSS Examples</i>	31

Color

**YUV(192.1320, -16.8271,
30.5792)**

Conversions

Conversions Part 1

Format	Color
Hex	E3B59E
RGB	227, 181, 158
RGB Percent	89%, 71%, 62%
CMY	0.1098, 0.2902, 0.3804
CMYK	0.00, 0.20, 0.30, 0.11
HSL	20°, 55%, 75%
HSV	20°, 30%, 89%
XYZ	54.3740, 51.8473, 39.4895
YIQ	192.1320, 34.7990, 2.5990

Conversions

Conversions Part 2

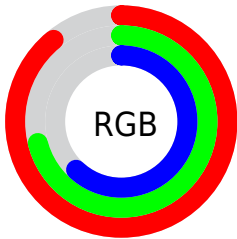
Format	Color
RYB	227, 193, 158
Decimal	14923166
CIELab	77.19, 13.39, 18.04
CIELCh	77, 22.470, 53.419
Yxy	51.8473, 0.3732, 0.3558
Android (android.graphics.Color)	4293113246 (0xFFE3B59E)
YUV	192.1320, -16.8271, 30.5792
Hunter-Lab	72.0050, 8.7839, 17.8873

Details

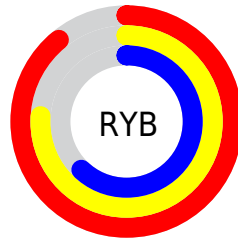
The YUV color $192.1320, -16.8271, 30.5792$ is a light color, and the websafe version is hex $CC9999$. A complement of this color would be $192.8680, 16.8271, -30.5792$, and the grayscale version is $192.0000, 0.0000, 0.0000$.

A 20% lighter version of the original color is $239.6460, -13.1365, 13.4655$, and $138.1640, -15.3639, 27.9202$ is the 20% darker color. If you saturate the color by 10%, you get $180.7050, -22.5326, 40.6007$, and if you desaturate by 10%, it is $203.5590, -11.1216, 20.5578$.

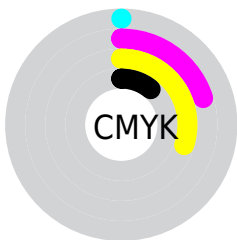
Distribution



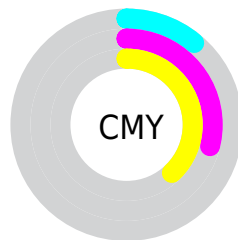
- Red (89%)
- Green (71%)
- Blue (62%)



- Red (89%)
- Yellow (76%)
- Blue (62%)



- Cyan (0%)
- Magenta (20%)
- Yellow (30%)
- Black (11%)



- Cyan (11%)
- Magenta (29%)
- Yellow (38%)

Brightness & Saturation Gradients

These gradients show how the YUV color 192.1320, -16.8271, 30.5792 changes by changing the brightness by 10 percent. The first figure shows a shift by +10% for each color and the second figure -10%.

Similar to the brightness gradients but the following saturation gradients show a change of the YUV color 192.1320, -16.8271, 30.5792 by changing the saturation by 10% instead.

■ 192.1320,
-16.8271, 30.5792

■ 192.1320,
-16.8271, 30.5792

255.0000, 0.0000,
0.0000

■ 164.6480,
-16.0955, 29.2497

■ 239.6460,
-13.1365, 13.4655

■ 138.1640,
-15.3639, 27.9202

■ 253.4040, -6.1152,
1.3997

■ 112.5660,
-15.0690, 26.6906

■ 88.0820, -14.3374,
25.3611

■ 64.2990, -13.4584,
23.4168

■ 41.6300, -12.1426,
21.3725

■ 20.1890, -9.9532,

19.1282

■ 0.8970, -0.4422,
1.8443

■ 0.0000, 0.0000,
0.0000

■ 192.1320,
-16.8271, 30.5792

■ 192.1320,
-16.8271, 30.5792

■ 180.7050,
-22.5326, 40.6007

■ 203.5590,
-11.1216, 20.5578

■ 169.3920,
-27.8013, 50.5222

■ 214.8720, -5.8529,
10.6363

■ 157.9650,
-33.5067, 60.5437

■ 226.2990, -0.1474,
0.6148

■ 145.9510,
-38.9228, 71.0800

■ 238.3130, 5.2687,
-9.9215

■ 134.6380,
-44.1915, 81.0015

■ 246.6280, 4.1274,
-17.2138

■ 123.2110,
-49.8970, 91.0230

■ 112.4850,
-55.4551, 100.4297

Harmonies

Analogous

The Analogous color harmony consists of three colors that are next to each other on the color wheel.



193.8150, -9.2758, 35.2422



192.1320, -16.8271, 30.5792



190.5450, -19.9887, 17.9390

Triad

The Triadic color harmony groups three colors that are evenly spaced from another and form a triangle on the color wheel.



192.1320, -16.8271, 30.5792



182.7200, 1.1240, -33.9574



192.0870, 18.1981, -3.5843

Complementary

The Complementary color scheme is a pair of colors which are on the opposite of each other on the color wheel.



192.1320, -16.8271, 30.5792



192.8680, 16.8271, -30.5792

Split Complementary

Split-complementary colors differ from the complementary color scheme. The scheme consists of three colors, the original color and two neighbors of the complement color.



188.0520, 21.1734, -24.6016



192.1320, -16.8271, 30.5792



181.8250, 11.9183, -42.8195

Square

The Square scheme is like the rectangle color scheme, but the four colors are evenly spaced on the color wheel.



192.1320, -16.8271, 30.5792



185.5450, -10.1287, -18.0180



183.7960, 19.3276, -39.2861



193.9710, 10.8603, 16.6884

Rectangle

The Rectangle color scheme consists of four colors that form a rectangle on the color wheel.



192.1320, -16.8271, 30.5792



188.7070, -19.0826, 7.2730



183.7960, 19.3276, -39.2861



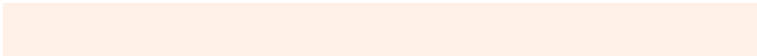
190.7980, 19.8196, -10.3468

Sweetspot

The Sweet Spot groups the original color and five complimentary colors.



192.1320, -16.8271, 30.5792



243.5730, -5.7055, 10.0215



183.8750, 9.9216, 37.8206



120.4200, -3.6581, 6.6477



0.0000, 0.0000, 0.0000



128.0000, 0.0000, 0.0000

Same Dimension

The Same Dimension uses a secret algorithm to generate beautiful new colors.



192.1320, -16.8271, 30.5792



208.7050, -22.5326, 40.6007



212.6770, -26.9558, 12.5613



108.9360, -2.9264, 5.3181



88.7410, -43.7493, 79.1571



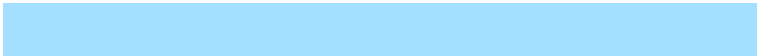
25.2280, -12.4374, 22.6020

Inverse Universe

The Inverse Universe completely reimagines the original color for something new.



192.8680, 16.8271, -30.5792



209.2950, 22.5326, -40.6007



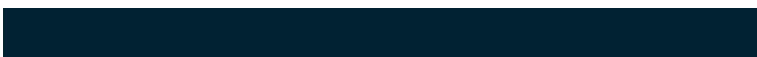
172.9100, 26.6664, -13.0761



109.0640, 2.9264, -5.3181



90.2590, 43.7493, -79.1571



25.7720, 12.4374, -22.6020

Previews

White Background



This preview shows how the YUV color 192.1320, -16.8271, 30.5792 looks on a white background.

Color Contrast Check

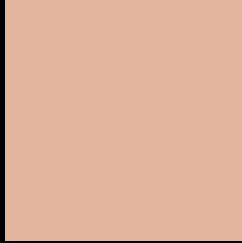
Large Text (above 18pt) WCAG AA × Fail

Any Text WCAG AA × Fail

Large Text (above 18pt) WCAG AAA × Fail

Any Text WCAG AAA × Fail

Black Background



This preview shows how the YUV color 192.1320, -16.8271, 30.5792 looks on a black background.

Color Contrast Check

Large Text (above 18pt) WCAG AA ✓ Pass

Any Text WCAG AA ✓ Pass

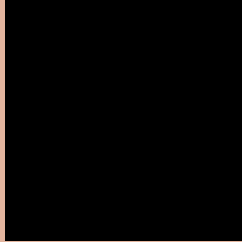
Large Text (above 18pt) WCAG AAA ✓ Pass

Any Text WCAG AAA ✓ Pass

If you want to check with other color combinations, try the [Color Contrast Checker](#).

YUV 192.1320, -16.8271, 30.5792

Background



This preview shows how black text looks on a background with the YUV color 192.1320, -16.8271, 30.5792.



This preview shows how white text looks on a background with the YUV color 192.1320, -16.8271,

30.5792.

Color Blindness Simulation

Color vision deficiency is a very complex topic, and I could not describe the different causes any better than Wikipedia does, so if you want to learn more, you should check out their [article about color blindness](#).

Dichromacy



Original Color

192.1320, -16.8271, 30.5792

Protanopia

190.2110, -13.4150, 9.4620

Deuteranopia

191.5120, -16.5214, 25.8610



Tritanopia

193.7420, -1.8448, 31.7983

Trichromacy



Original Color

192.1320, -16.8271, 30.5792

Protanomaly

190.9130, -14.7471, 16.7393

Deuteranomaly

191.5230, -16.5268, 27.6053

Tritanomaly

193.2490, -7.5178, 31.3536

Monochromacy



Original Color

192.1320, -16.8271, 30.5792

Achromatopsia

192.0000, 0.0000, 0.0000

Achromatomaly

192.1710, -6.0003, 11.2510

CSS Examples

Text

The CSS property to change the color of the text to YUV 192.1320, -16.8271, 30.5792 is called "color". The color property can be set on classes, ids or directly on the HTML element.

This example shows how text in the color `rgb(227, 181, 158)` looks like.

```
.text, #text, p{  
    color:rgb(227, 181, 158)  
}
```

If you want to add a text shadow in that color use the text-shadow property, you can generate a text shadow directly with our [CSS Text Shadow Generator](#).

Here you see how black text with a 4 pixel rgb(227, 181, 158) colored shadow looks like.

```
.shadow{ text-shadow: 4px 4px 2px rgb(227, 181, 158) }
```

Border

The CSS property to change the border of an element to YUV 192.1320, -16.8271, 30.5792 is called "border".

The border property can be set on classes, ids or directly on the HTML element.

This example shows the color as border, it can be applied via the CSS property "border" or "border-color".

```
.border, #border, table{ border:4px solid rgb(227, 181, 158) }
```


If only the border color should be changed use the property `border-color`.

```
.border{ border-color:rgb(227, 181, 158) }
```

If you want to add a box shadow in that color use:

Here you see how a box with a 4 pixel `rgb(227, 181, 158)` colored shadow looks like.

```
.boxshadow{ -moz-box-shadow:4px 4px 4px  
4px rgb(227, 181, 158); -webkit-box-  
shadow:4px 4px 4px 4px rgb(227, 181, 158);  
box-shadow:4px 4px 4px 4px rgb(227, 181,  
158) }
```

Background

The CSS property to change the background color of an element to YUV 192.1320, -16.8271, 30.5792 is called "background". The background property can be set on classes, ids or directly on the HTML element.

```
.background, #background, body{  
background: rgb(227, 181, 158) }
```

If only the background color should be changed can be used:

```
.background{ background-color: rgb(227,  
181, 158) }
```

This example shows the color as background, it is applied via the CSS property "background".

To optimize and compress your CSS code, you can use our [online CSS compressor and optimizer](#) based on csstidy. If you want to create a linear or radial gradient as background or border, check our [CSS Gradient Generator](#).

Hey! You found this booklet interesting? Support Converting Colors with the new Membership Option!

The pro membership hides all ads, plus gives you double the colors in the color bucket, and more awesome pro features!

[Learn more, Memberships starting at \\$2.50/m!](#)

**Follow me
on Twitter!**

@ConvertingColor