

Converting Colors

YUV(192.1760, -3.5378,
14.7546)

Have a look what the booklet for
YUV(192.1760, -3.5378, 14.7546)
contains.

YUV(192.1760, -3.5378, 14.7546)	3
<i>Conversions</i>	4
<i>Details</i>	6
<i>Harmonies</i>	12
<i>Previews</i>	24
<i>Color Blindness Simulation</i>	28
<i>CSS Examples</i>	31

Color

**YUV(192.1760, -3.5378,
14.7546)**

Conversions

Conversions Part 1

Format	Color
Hex	D1B9B9
RGB	209, 185, 185
RGB Percent	82%, 73%, 73%
CMY	0.1804, 0.2745, 0.2745
CMYK	0.00, 0.11, 0.11, 0.18
HSL	0°, 21%, 77%
HSV	0°, 11%, 82%
XYZ	52.4004, 51.7560, 53.1271
YIQ	192.1760, 14.3040, 5.0880

Conversions

Conversions Part 2

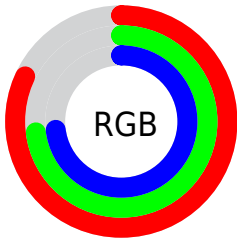
Format	Color
R _Y B	209, 185, 185
Decimal	13744569
CIE Lab	77.13, 8.54, 3.12
CIE LCh	77, 9.097, 20.092
Yxy	51.7560, 0.3332, 0.3291
Android (android.graphics.Color)	4291934649 (0xFFD1B9B9)
YUV	192.1760, -3.5378, 14.7546
Hunter-Lab	71.9417, 4.1168, 6.5750

Details

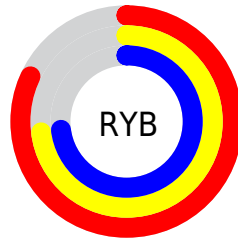
The YUV color $192.1760, -3.5378, 14.7546$ is a light color, and the websafe version is hex `CCCCCC`. A complement of this color would be $201.8240, 3.5378, -14.7546$, and the grayscale version is $192.0000, 0.0000, 0.0000$.

A 20% lighter version of the original color is $245.1860, -2.0637, 8.6069$, and $138.5780, -3.2430, 13.5251$ is the 20% darker color. If you saturate the color by 10%, you get $177.4550, -6.6333, 27.6650$, and if you desaturate by 10%, it is $206.8970, -0.4422, 1.8443$.

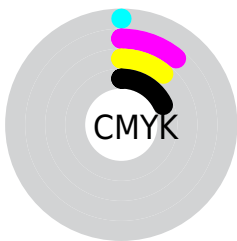
Distribution



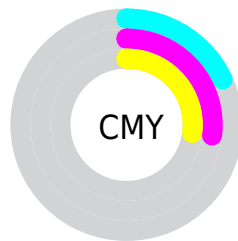
- Red (82%)
- Green (73%)
- Blue (73%)



- Red (82%)
- Yellow (73%)
- Blue (73%)



- Cyan (0%)
- Magenta (11%)
- Yellow (11%)
- Black (18%)



- Cyan (18%)
- Magenta (27%)
- Yellow (27%)

Brightness & Saturation Gradients

These gradients show how the YUV color 192.1760, -3.5378, 14.7546 changes by changing the brightness by 10 percent. The first figure shows a shift by +10% for each color and the second figure -10%.

Similar to the brightness gradients but the following saturation gradients show a change of the YUV color 192.1760, -3.5378, 14.7546 by changing the saturation by 10% instead.

■ 192.1760, -3.5378,
14.7546

■ 192.1760, -3.5378,
14.7546

255.0000, 0.0000,
0.0000

■ 164.8770, -3.3904,
14.1399

■ 245.1860, -2.0637,
8.6069

■ 138.5780, -3.2430,
13.5251

■ 113.2790, -3.0955,
12.9103

■ 88.3930, -2.6587,
12.8103

■ 65.0940, -2.5113,
12.1956

■ 43.3820, -2.6533,
11.0660

■ 22.0830, -2.5059,

10.4512

■ 0.0000, 0.0000,
0.0000

■ 192.1760, -3.5378,
14.7546

■ 192.1760, -3.5378,
14.7546

■ 177.4550, -6.6333,
27.6650

■ 206.8970, -0.4422,
1.8443

■ 162.7340, -9.7289,
40.5753

■ 221.6180, 2.6533,
-11.0660

■ 148.0130,
-12.8244, 53.4856

■ 236.3390, 5.7489,
-23.9763

■ 133.2920,
-15.9200, 66.3959

■ 241.2460, 6.7807,
-28.2797

■ 118.5710,
-19.0155, 79.3062

■ 104.5510,
-21.9636, 91.6018

■ 89.8300, -25.0592,
104.5121

■ 75.1090, -28.1547,
117.4224

■ 62.4910, -30.8081,
128.4884

Harmonies

Analogous

The Analogous color harmony consists of three colors that are next to each other on the color wheel.



192.3050, 0.8356, 12.0105



192.1760, -3.5378, 14.7546



191.3670, -6.5899, 13.7101

Triad

The Triadic color harmony groups three colors that are evenly spaced from another and form a triangle on the color wheel.



192.1760, -3.5378, 14.7546



188.7020, -4.7831, -5.8777



189.8230, 8.4683, -9.4918

Complementary

The Complementary color scheme is a pair of colors which are on the opposite of each other on the color wheel.



192.1760, -3.5378, 14.7546



201.8240, 3.5378, -14.7546

Split Complementary

Split-complementary colors differ from the complementary color scheme. The scheme consists of three colors, the original color and two neighbors of the complement color.



188.4480, 7.1741, -14.4249



192.1760, -3.5378, 14.7546



187.8090, -0.3988, -12.1105

Square

The Square scheme is like the rectangle color scheme, but the four colors are evenly spaced on the color wheel.



192.1760, -3.5378, 14.7546



189.7630, -7.2782, 1.0848



187.6390, 4.1220, -15.4694



190.9380, 7.4256, -1.6996

Rectangle

The Rectangle color scheme consists of four colors that form a rectangle on the color wheel.



192.1760, -3.5378, 14.7546



191.0030, -7.8895, 10.5214



187.6390, 4.1220, -15.4694



189.3990, 8.1843, -11.7509

Sweetspot

The Sweet Spot groups the original color and five complimentary colors.



192.1760, -3.5378, 14.7546



249.3920, -1.1793, 4.9182



194.9120, 6.9454, 12.3552



123.7940, -0.8844, 3.6887



0.0000, 0.0000, 0.0000



128.0000, 0.0000, 0.0000

Same Dimension

The Same Dimension uses a secret algorithm to generate beautiful new colors.



192.1760, -3.5378, 14.7546



229.7640, -5.3067, 22.1320



199.2200, -7.0105, 8.5771



97.2890, -1.6215, 6.7625



50.2320, -24.7644, 103.2825



12.2590, -6.0437, 25.2059

Inverse Universe

The Inverse Universe completely reimagines the original color for something new.



201.8240, 3.5378, -14.7546



244.2360, 5.3067, -22.1320



194.7800, 7.0105, -8.5771



101.7110, 1.6215, -6.7625



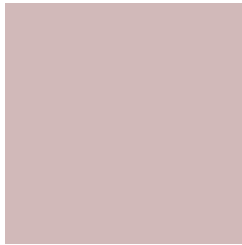
117.7680, 24.7644, -103.2825



28.7410, 6.0437, -25.2059

Previews

White Background



This preview shows how the YUV color 192.1760, -3.5378, 14.7546 looks on a white background.

Color Contrast Check

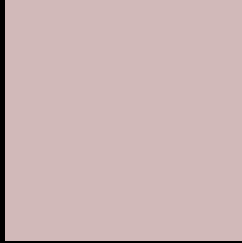
Large Text (above 18pt) WCAG AA × Fail

Any Text WCAG AA × Fail

Large Text (above 18pt) WCAG AAA × Fail

Any Text WCAG AAA × Fail

Black Background



This preview shows how the YUV color 192.1760, -3.5378, 14.7546 looks on a black background.

Color Contrast Check

Large Text (above 18pt) WCAG AA ✓ Pass

Any Text WCAG AA ✓ Pass

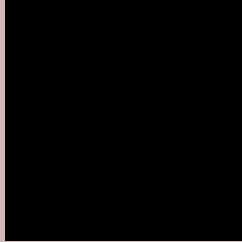
Large Text (above 18pt) WCAG AAA ✓ Pass

Any Text WCAG AAA ✓ Pass

If you want to check with other color combinations, try the [Color Contrast Checker](#).

YUV 192.1760, -3.5378, 14.7546

Background



This preview shows how black text looks on a background with the YUV color 192.1760, -3.5378, 14.7546.



This preview shows how white text looks on a background with the YUV color 192.1760, -3.5378,

Color Blindness Simulation

Color vision deficiency is a very complex topic, and I could not describe the different causes any better than Wikipedia does, so if you want to learn more, you should check out their [article about color blindness](#).

Dichromacy



Original Color

192.1760, -3.5378, 14.7546

Protanopia

191.2670, -1.6106, 3.2738

Deuteranopia

192.1870, -3.5432, 16.4990



Tritanopia

192.9680, 1.9878, 15.8141

Trichromacy



Original Color

192.1760, -3.5378, 14.7546

Protanomaly

191.4740, -2.2057, 7.4773

Deuteranomaly

191.8880, -3.3958, 15.8842

Tritanomaly

192.8000, 0.0986, 15.0844

Monochromacy



Original Color

192.1760, -3.5378, 14.7546

Achromatopsia

192.0000, 0.0000, 0.0000

Achromatomaly

191.6910, -1.3267, 5.5330

CSS Examples

Text

The CSS property to change the color of the text to YUV 192.1760, -3.5378, 14.7546 is called "color". The color property can be set on classes, ids or directly on the HTML element.

This example shows how text in the color `rgb(209, 185, 185)` looks like.

```
.text, #text, p{  
    color:rgb(209, 185, 185)  
}
```

If you want to add a text shadow in that color use the text-shadow property, you can generate a text shadow directly with our [CSS Text Shadow Generator](#).

Here you see how black text with a 4 pixel rgb(209, 185, 185) colored shadow looks like.

```
.shadow{ text-shadow: 4px 4px 2px rgb(209, 185, 185) }
```

Border

The CSS property to change the border of an element to YUV 192.1760, -3.5378, 14.7546 is called "border". The border property can be set on classes, ids or directly on the HTML element.

This example shows the color as border, it can be applied via the CSS property "border" or "border-color".

```
.border, #border, table{ border:4px solid rgb(209, 185, 185) }
```


If only the border color should be changed use the property `border-color`.

```
.border{ border-color:rgb(209, 185, 185) }
```

If you want to add a box shadow in that color use:

Here you see how a box with a 4 pixel `rgb(209, 185, 185)` colored shadow looks like.

```
.boxshadow{ -moz-box-shadow:4px 4px 4px  
4px rgb(209, 185, 185); -webkit-box-  
shadow:4px 4px 4px 4px rgb(209, 185, 185);  
box-shadow:4px 4px 4px 4px rgb(209, 185,  
185) }
```

Background

The CSS property to change the background color of an element to YUV 192.1760, -3.5378, 14.7546 is called "background". The background property can be set on classes, ids or directly on the HTML element.

```
.background, #background, body{  
background: rgb(209, 185, 185) }
```

If only the background color should be changed can be used:

```
.background{ background-color: rgb(209,  
185, 185) }
```

This example shows the color as background, it is applied via the CSS property "background".

To optimize and compress your CSS code, you can use our [online CSS compressor and optimizer](#) based on csstidy. If you want to create a linear or radial gradient as background or border, check our [CSS Gradient Generator](#).

Hey! You found this booklet interesting? Support Converting Colors with the new Membership Option!

The pro membership hides all ads, plus gives you double the colors in the color bucket, and more awesome pro features!

[Learn more, Memberships starting at \\$2.50/m!](#)

**Follow me
on Twitter!**

@ConvertingColor